

090008930

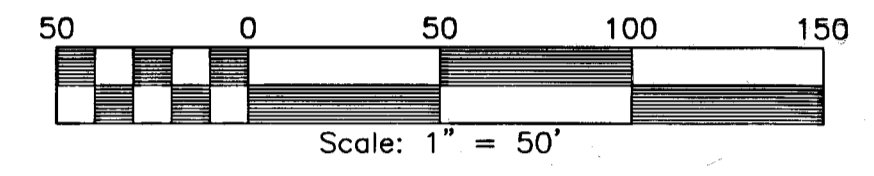
LINE	BEARING	DISTANCE
L22	S 11°21'59" E	31.63'

CURVE	RADIUS	ARC LENGTH	CHORD LENGTH	CHORD BEARING	DELTA ANGLE	TANGENT
C20	517.00'	45.85'	45.84'	N 87°35'02" E	5°04'54"	22.94'
C21	2000.00'	159.47'	159.42'	S 81°27'56" W	4°34'06"	79.77'

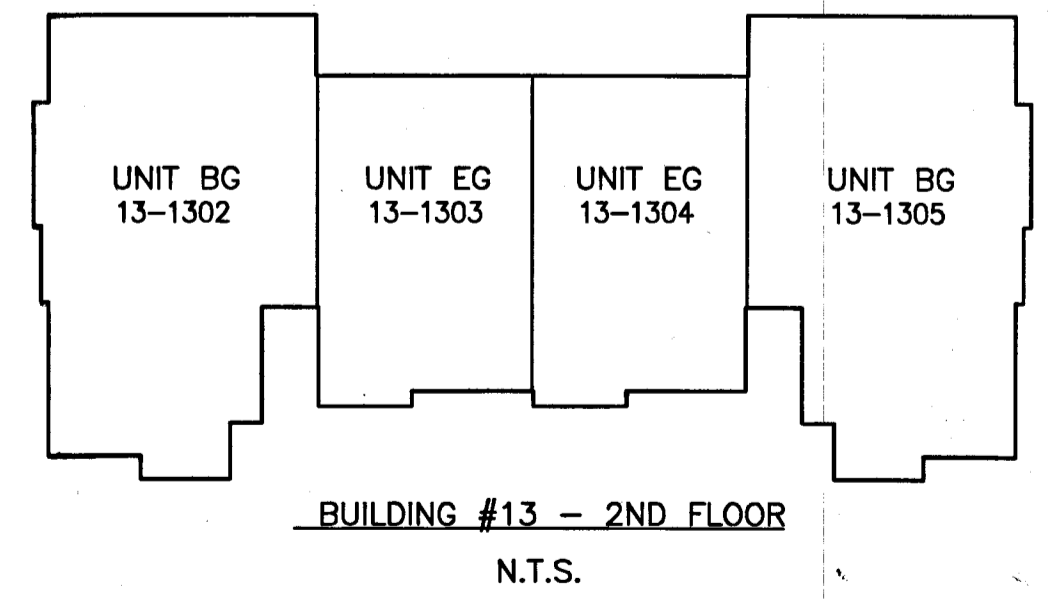
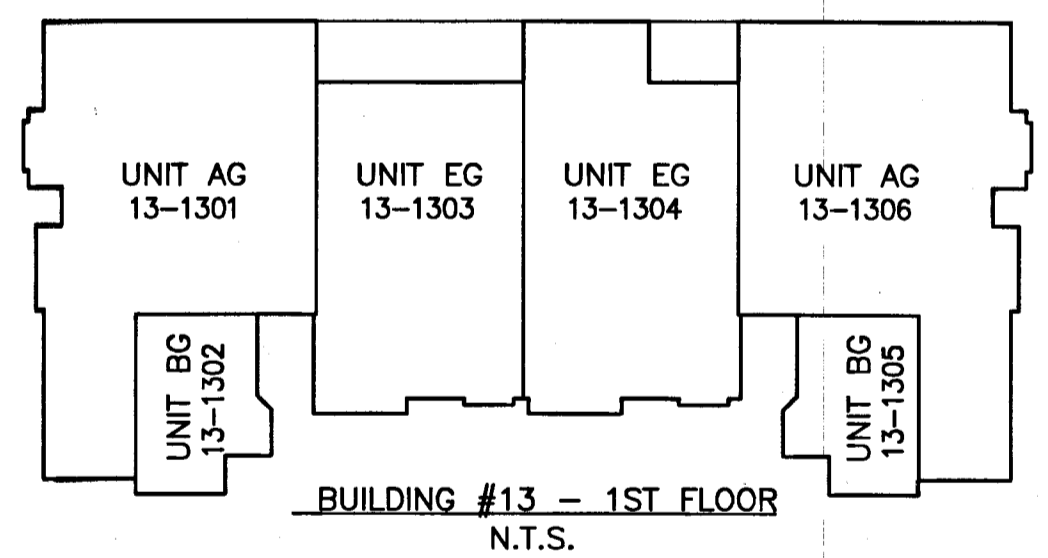
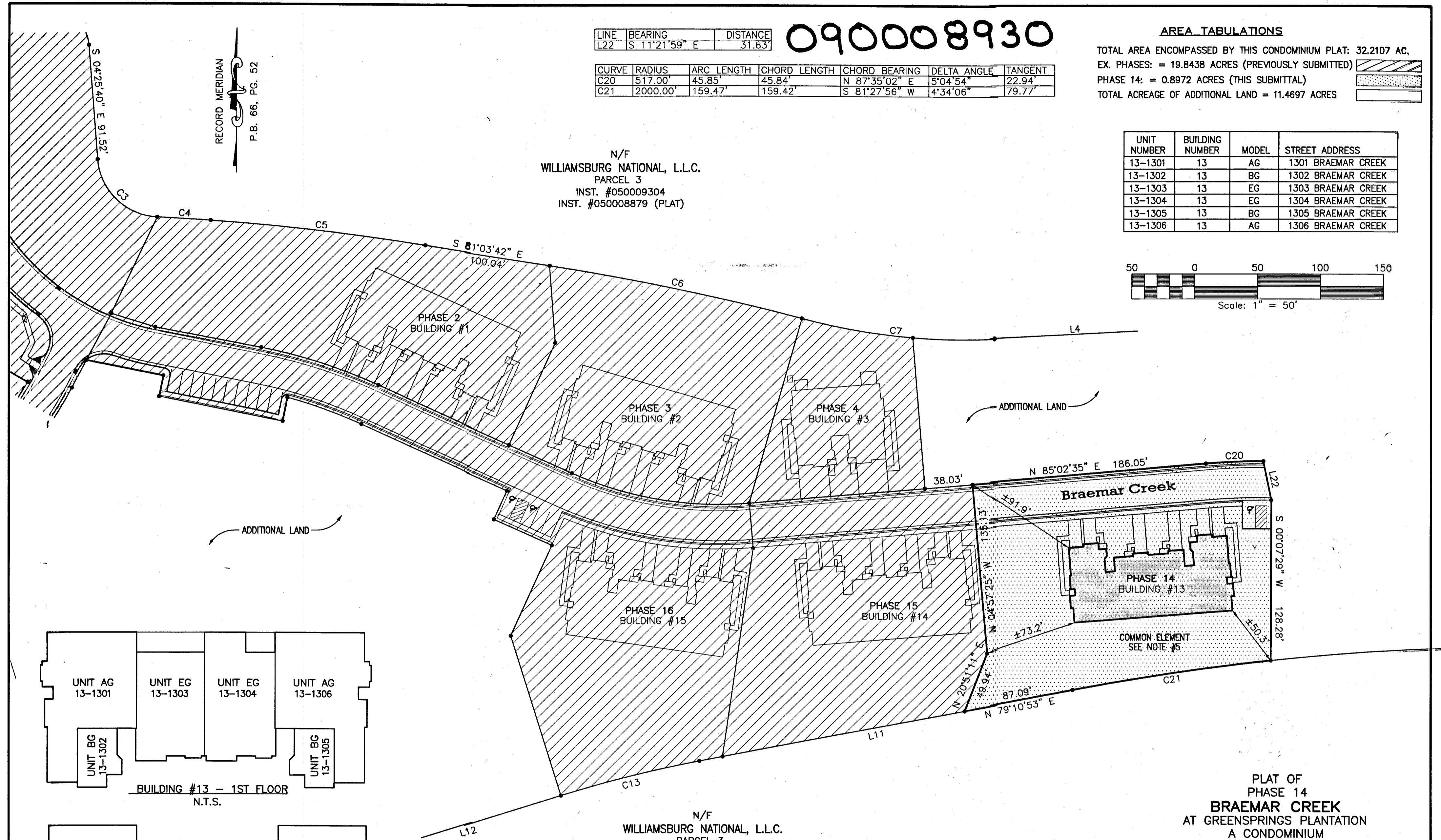
AREA TABULATIONS

TOTAL AREA ENCOMPASSED BY THIS CONDOMINIUM PLAT: 32.2107 AC.
 EX. PHASES: = 19.8438 ACRES (PREVIOUSLY SUBMITTED)
 PHASE 14: = 0.8972 ACRES (THIS SUBMITTAL)
 TOTAL ACREAGE OF ADDITIONAL LAND = 11.4697 ACRES

UNIT NUMBER	BUILDING NUMBER	MODEL	STREET ADDRESS
13-1301	13	AG	1301 BRAEMAR CREEK
13-1302	13	BG	1302 BRAEMAR CREEK
13-1303	13	EG	1303 BRAEMAR CREEK
13-1304	13	EG	1304 BRAEMAR CREEK
13-1305	13	BG	1305 BRAEMAR CREEK
13-1306	13	AG	1306 BRAEMAR CREEK



N/F
 WILLIAMSBURG NATIONAL, L.L.C.
 PARCEL 3
 INST. #050009304
 INST. #050008879 (PLAT)



N/F
 WILLIAMSBURG NATIONAL, L.L.C.
 PARCEL 3
 INST. #050009304
 INST. #050008879 (PLAT)

2 Large/Small Plat(s) Recorded
 herewith as # 090008930

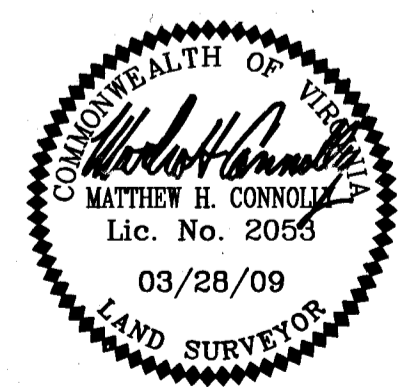
SURVEYORS CERTIFICATE

I HEREBY CERTIFY THAT TO THE BEST OF MY KNOWLEDGE OR BELIEF, THIS PLAT IS ACCURATE AND COMPLIES WITH THE PROVISIONS OF SECTION 55-79.58 (A) OF THE CODE OF VIRGINIA 1950 AS AMENDED AND THAT ALL UNITS DEPICTED HEREON HAVE BEEN SUBSTANTIALLY COMPLETED.

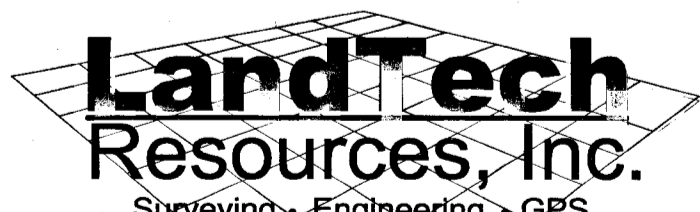
Matthew H. Connolly
 STATE CERTIFIED LAND SURVEYOR

3/28/2009
 DATE

City of Williamsburg & County of James City
 Circuit Court. This PLAT was recorded on
 31 March 2009
 at 11:41 AM/PM PG
 DOCUMENT # 090008930
 BETSY B. WOOLRIDGE, CLERK
Betsy B. Woolridge Clerk



PLAT OF
 PHASE 14
BRAEMAR CREEK
 AT GREENSPRINGS PLANTATION
 A CONDOMINIUM
 LOCATED IN THE BERKELEY DISTRICT
 JAMES CITY COUNTY, VIRGINIA
 DATE: 03/28/09 SCALE: 1" = 50' JOB# 05-548-14
 SHEET 2 OF 2



205-E Bulifants Boulevard, Williamsburg, VA 23188
 Phone: (757) 565-1677 Fax: (757) 565-0782
 web: landtechresources.com