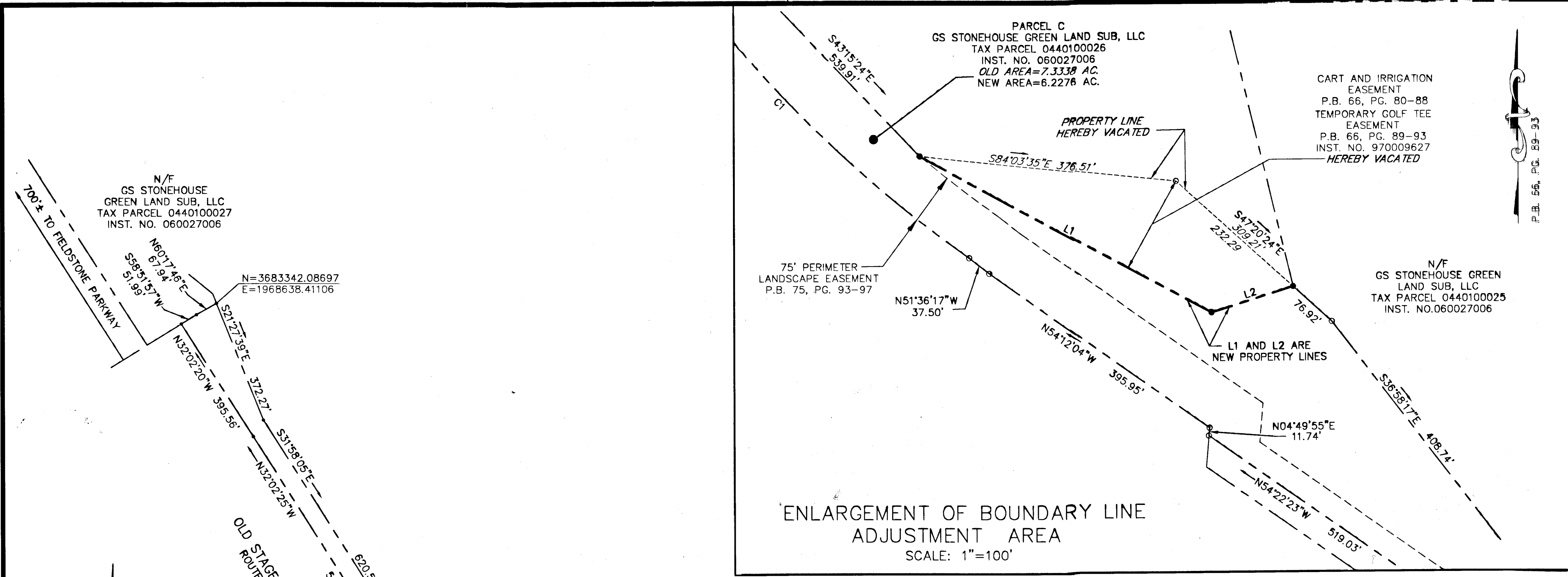


090008618



ENLARGEMENT OF BOUNDARY LINE
ADJUSTMENT AREA
SCALE: 1"=100'

N/F
GS STONEHOUSE
GREEN LAND SUB, LLC
TAX PARCEL 0440100027
INST. NO. 060027006

N=3683342.08697
E=1968638.41106

PARCEL C
GS STONEHOUSE GREEN LAND
SUB, LLC
TAX PARCEL 0440100028
INST. NO. 060027006
OLD AREA=7.3338 AC.
NEW AREA=6.2276 AC.

THE TRADITION GOLF CLUB
AT STONEHOUSE, LLC
TAX PARCEL 0440100021
INST. NO. 010010551
OLD AREA=23.4009 AC.
NEW AREA=24.5071 AC.

CART AND IRRIGATION
EASEMENT
P.B. 66, PG. 80-88
TEMPORARY GOLF TEE
EASEMENT
P.B. 66, PG. 89-93
INST. NO. 970009627
HEREBY VACATED

N/F
GS STONEHOUSE GREEN
LAND SUB, LLC
TAX PARCEL 0440100025
INST. NO. 060027006

N/F
TRADITION GOLF CLUB
AT STONEHOUSE, LLC
TAX PARCEL 0530100008
INST. NO. 010010551

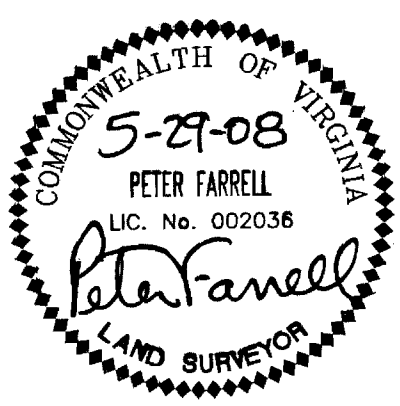
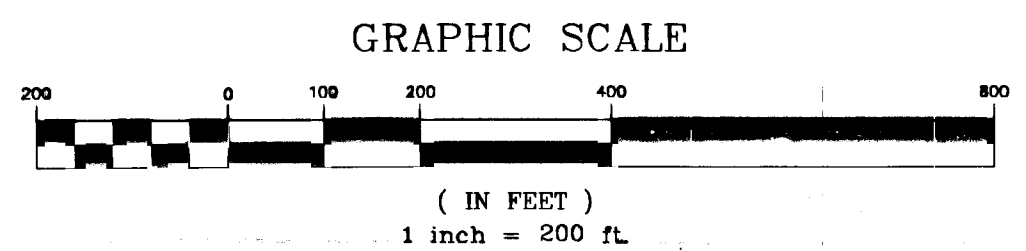
N/F
THE ASSOCIATION
AT STONEHOUSE, INC.
TAX PARCEL 0440100031
INST. NO. 050014426

CART AND IRRIGATION
EASEMENT
P.B. 66, PG. 80-88
TEMPORARY GOLF TEE
EASEMENT
P.B. 66, PG. 89-93
INST. NO. 970009627
HEREBY VACATED

N/F
GS STONEHOUSE GREEN
LAND SUB, LLC
TAX PARCEL 0440100025
INST. NO. 060027006

LINE TABLE		
LINE	LENGTH	BEARING
L1	486.19'	N61°11'41"W
L2	125.16'	S72°22'49"W

CURVE TABLE						
CURVE	LENGTH	RADIUS	TANGENT	CHORD	CHORD BEARING	DELTA
C1	708.64'	1809.86'	358.92'	704.12'	S43°15'21"E	22°28'02"



2 Large/Small Plat(s) Recorded
herewith as # 090008618

City of Williamsburg & County of James City
Circuit Court: This PLAT was recorded on
3-27-2009
at 1:04 PM, PG. 1
DOCUMENT # 090008618
BETSY B. WOOLRIDGE, CLERK
Betsy B. Woolridge Clerk

**BOUNDARY LINE
ADJUSTMENT**
BETWEEN THE PROPERTIES OF
GS STONEHOUSE GREEN LAND SUB, LLC
AND
**THE TRADITION GOLF CLUB
AT STONEHOUSE, LLC**
STONEHOUSE MAGISTERIAL DISTRICT
JAMES CITY COUNTY, VIRGINIA

DATE: 05-29-08
SCALE: 1"=200'
SHEET 2 OF 2



4029 Inboard Road
Suite 100
Williamsburg, VA 23188
Tel. (757) 253-2975
Fax (757) 229-0049
Email: lmdg@landmarkdg.com

Suite 200
Virginia Beach, VA 23462
Tel. (757) 473-2000
Fax (757) 497-7933
Email: lmdg@landmarkdg.com