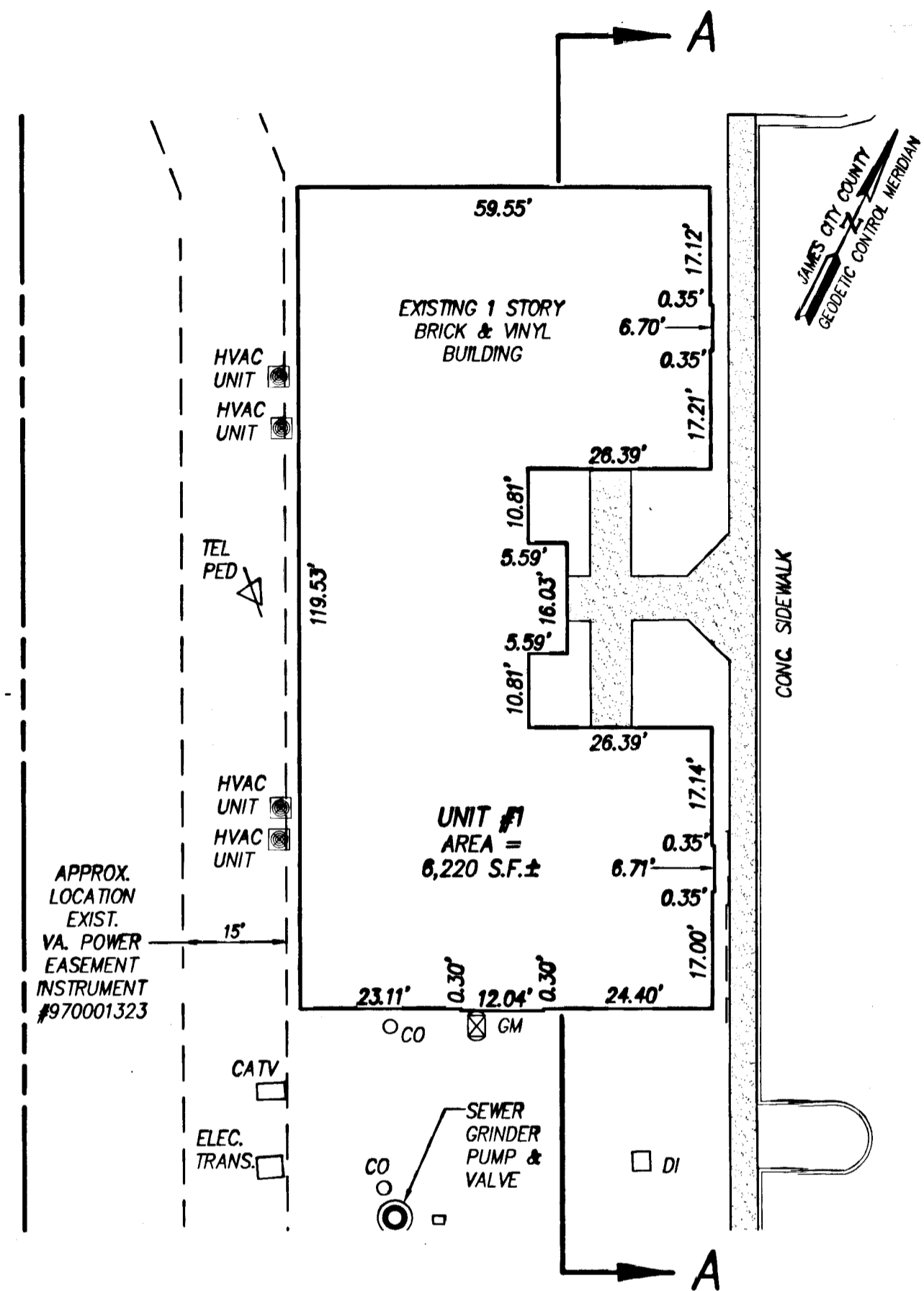
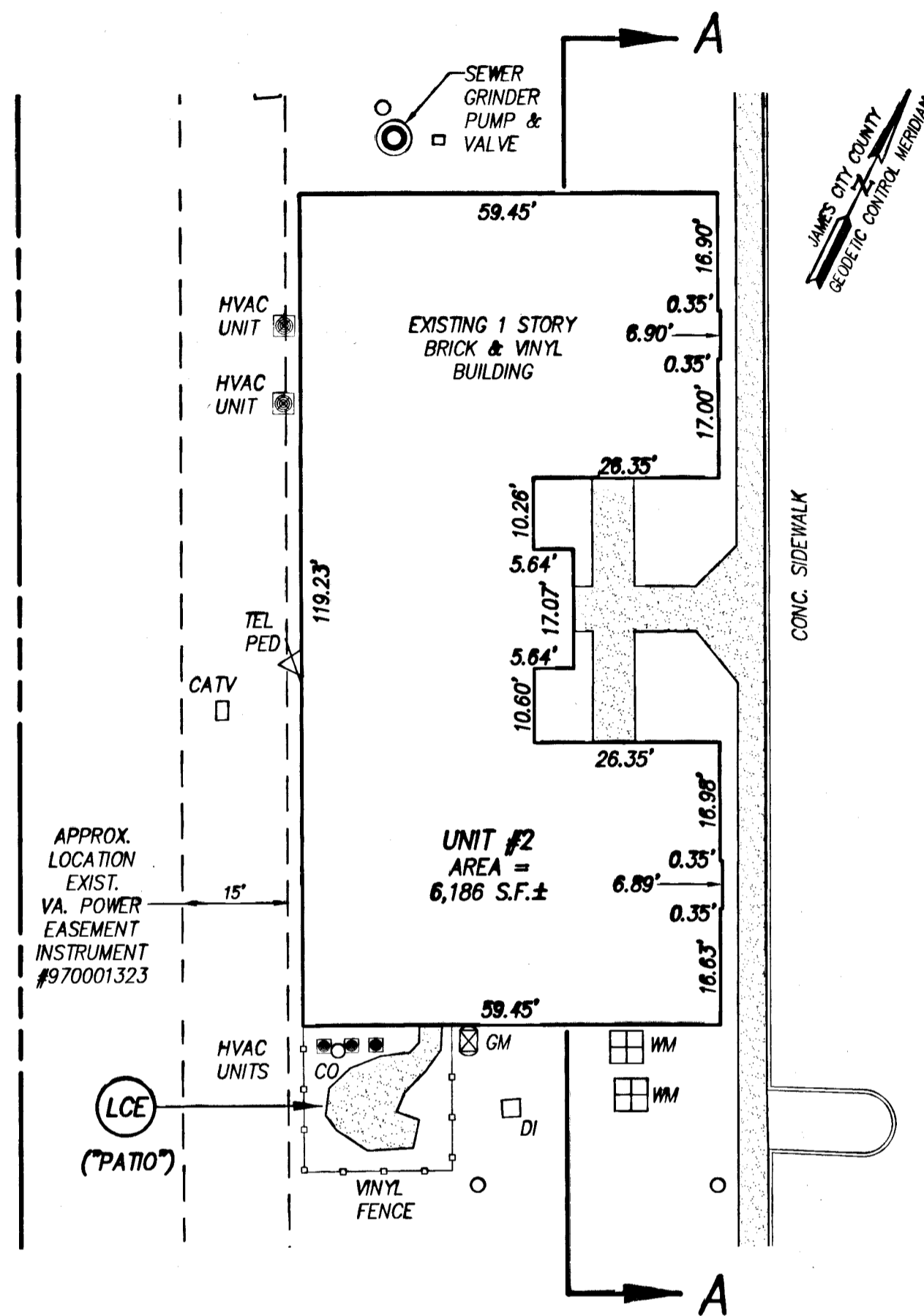


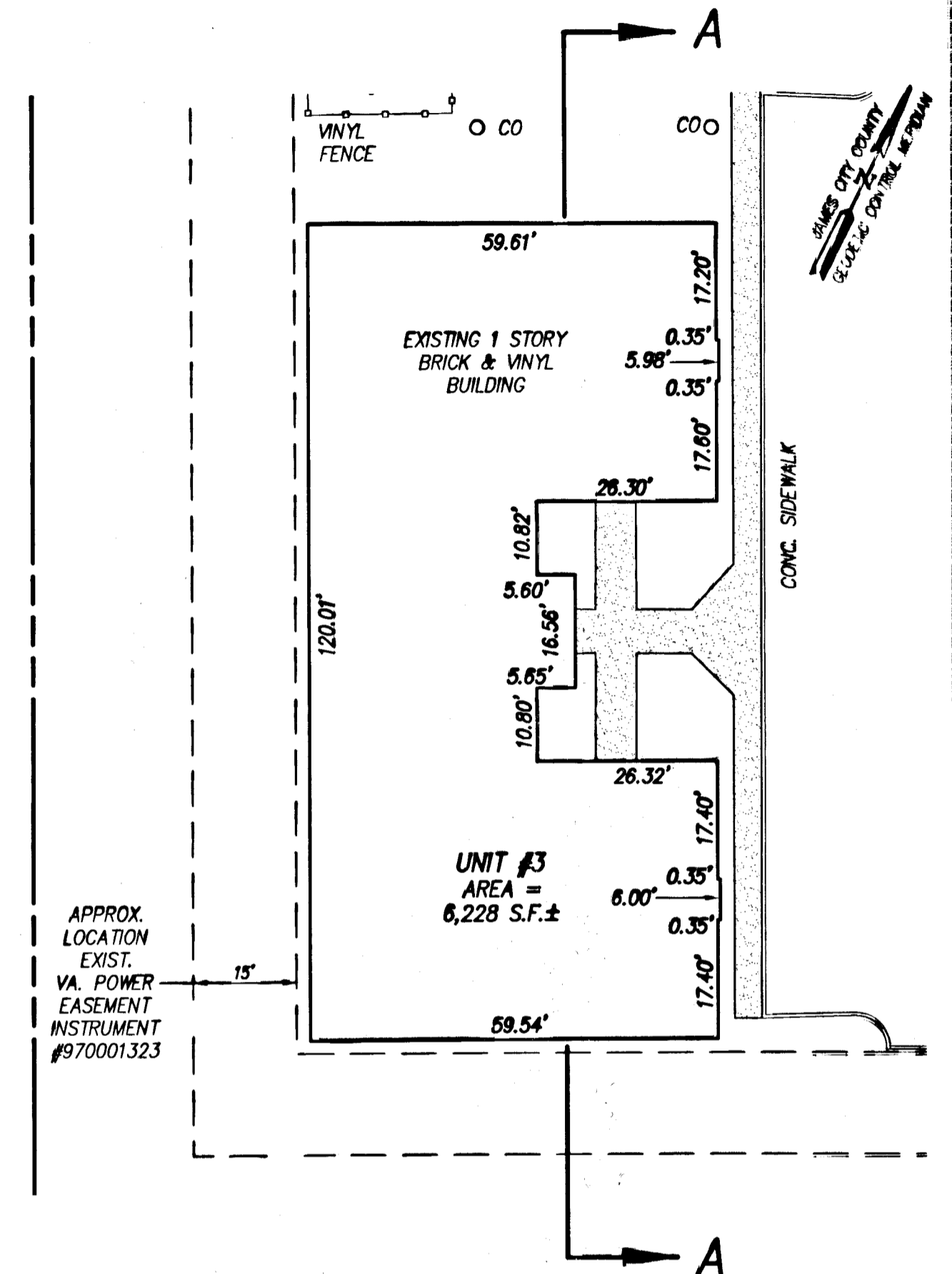
090008301



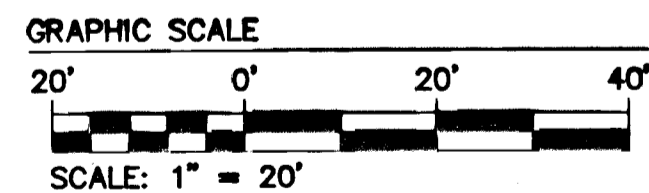
PLAN VIEW - UNIT #1
SCALE: 1"=20'



PLAN VIEW - UNIT #2
SCALE: 1"=20'

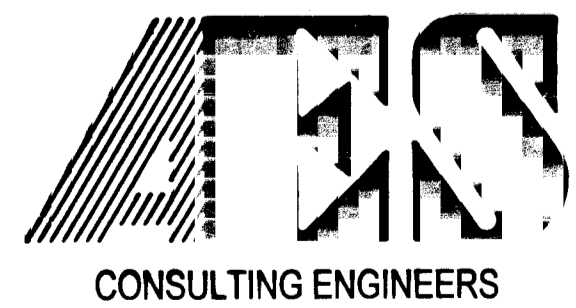


PLAN VIEW - UNIT #3
SCALE: 1"=20'



THE UNDERSIGNED VIRGINIA LAND SURVEYOR HEREBY CERTIFIES TO THE BEST OF MY KNOWLEDGE AND BELIEF, THAT I HAVE READ SECTION 55-79.58(B) OF THE CODE OF VIRGINIA AND FIND THE PLANS TO BE ACCURATE AND IN COMPLIANCE WITH THE CODE. UNITS #1, #2 AND #3 ARE SUBSTANTIALLY COMPLETE.

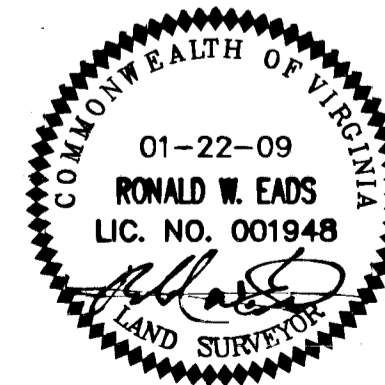
Ronald W. Eads
RONALD W. EADS, L.S. #001948
5 Large/Small Plat(s) Recorded
herewith as # 090008301



5248 Olde Towne Road, Suite 1
Williamsburg, Virginia 23188
(757) 253-0040
Fax (757) 220-8994

WILLIAMSBURG • RICHMOND • GLOUCESTER • FREDERICKSBURG

EXHIBIT "D"
PLAN FOR CONDOMINIUM
PHASE 1
"GREENSPRINGS COMMONS", A CONDOMINIUM
JAMESTOWN DISTRICT JAMES CITY COUNTY VIRGINIA



No.	DATE	REVISION / COMMENT / NOTE	BY

City of Williamsburg & County of James City
Circuit Court: This PLAT was recorded on
24 March 2009
at 12:03 AM/PM, PG
DOCUMENT # 090008301
BETSY B. WOOLRIDGE, CLERK
Betsy B. Woolridge Clerk

Designed AES	Drawn JDR/RWE
Scale 1" = 20'	Date 01/22/09
Project No. 9997-01	
Drawing No. 4 of 5	