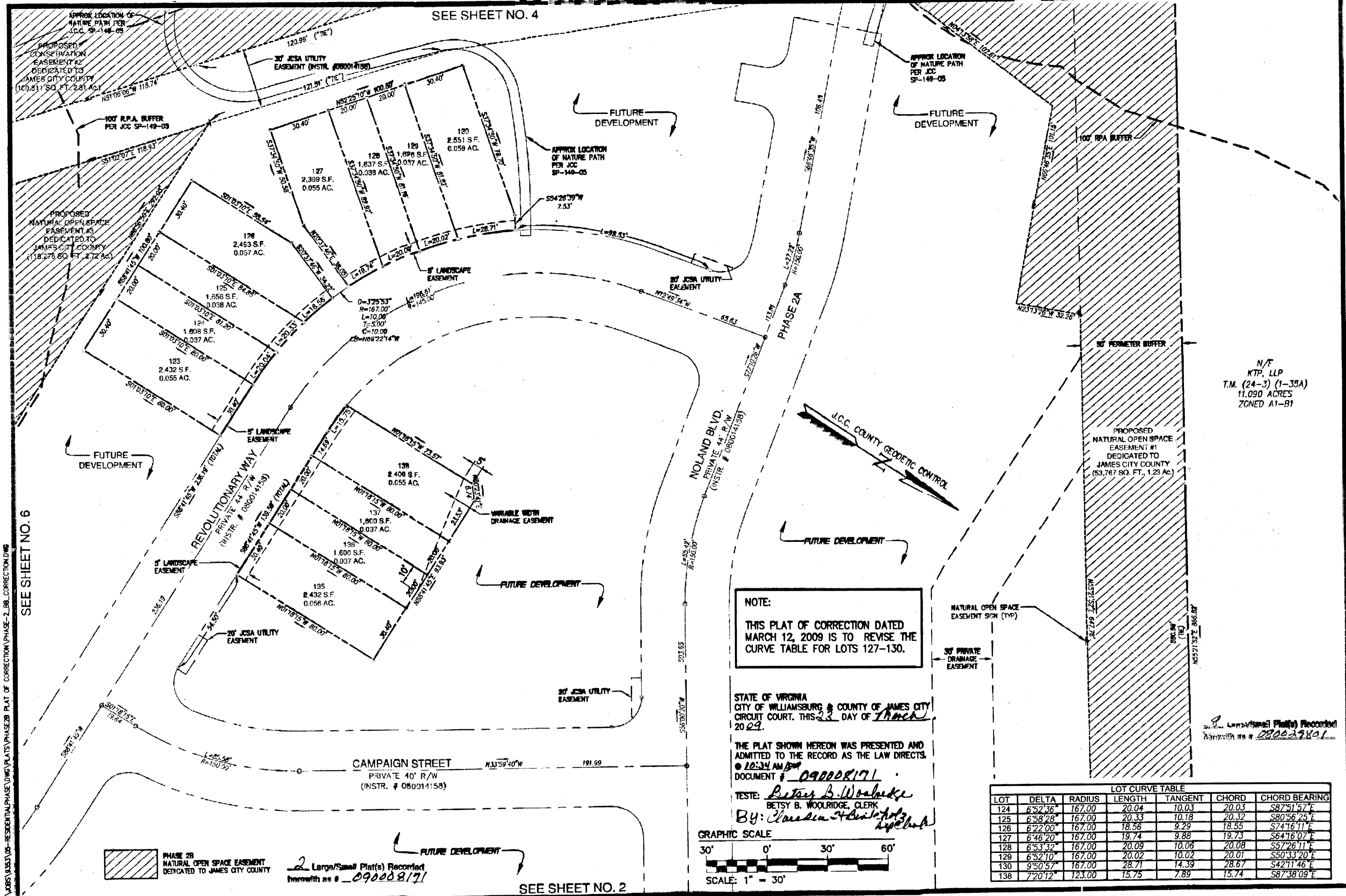


090029801

090008171

SEE SHEET NO. 4

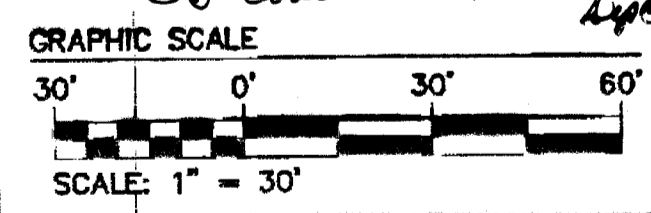


**NOTE:**  
 THIS PLAT OF CORRECTION DATED MARCH 12, 2009 IS TO REVISE THE CURVE TABLE FOR LOTS 127-130.

STATE OF VIRGINIA  
 CITY OF WILLIAMSBURG & COUNTY OF JAMES CITY  
 CIRCUIT COURT. THIS 23 DAY OF March 2009.

THE PLAT SHOWN HEREON WAS PRESENTED AND ADMITTED TO THE RECORD AS THE LAW DIRECTS.  
 DOCUMENT # 090008171

TESTE: *Betsy B. Woolridge*  
 BETSY B. WOOLRIDGE, CLERK  
 BY: *Thomas C. Sublett*



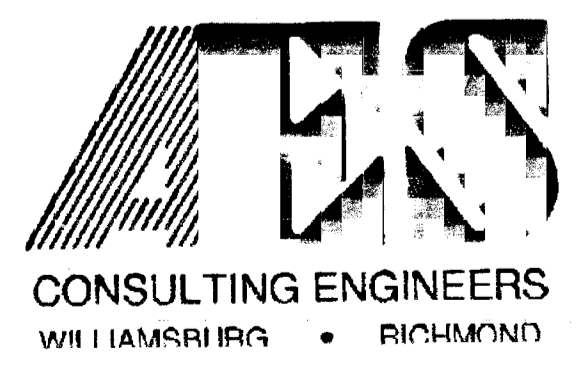
LOT	DELTA	RADIUS	LENGTH	TANGENT	CHORD	CHORD BEARING
124	6°52'36"	167.00	20.04	10.03	20.03	S87°51'57"E
125	6°58'28"	167.00	20.33	10.18	20.32	S80°56'25"E
126	6°22'00"	167.00	18.56	9.29	18.55	S74°16'11"E
127	6°46'20"	167.00	19.74	9.88	19.73	S64°16'07"E
128	6°53'32"	167.00	20.09	10.06	20.08	S57°26'11"E
129	6°52'10"	167.00	20.02	10.02	20.01	S50°33'20"E
130	9°50'57"	167.00	28.71	14.39	28.67	S42°11'46"E
138	7°20'12"	123.00	15.75	7.89	15.74	S87°38'09"E

SEE SHEET NO. 6

PHASE 2B  
 NATURAL OPEN SPACE EASEMENT  
 DEDICATED TO JAMES CITY COUNTY

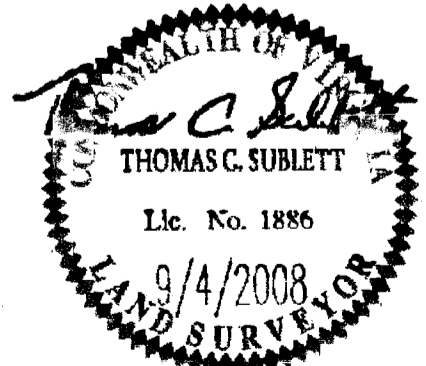
2 Large/Small Plat(s) Recorded  
 herewith as # 090008171

SEE SHEET NO. 2



5248 Olde Towne Road, Suite 1  
 Williamsburg, Virginia 23188  
 (757) 253-0040  
 Fax (757) 220-8994

PLAT OF CORRECTION  
**PHASE 2-B**  
**LIBERTY CROSSING**  
 LOTS  
 69-78, 108-112, 123-130, 135-138 &  
 NATURAL OPEN SPACE  
 STONEHOUSE DISTRICT JAMES CITY COUNTY VIRGINIA



No.	DATE	REVISION / COMMENT / NOTE	BY

Designed AES	Drawn MEG
Scale 1"=30'	Date 9/04/08
Project No. 9353-05	Drawing No. 1 OF 2

N/F  
 KTP, LLP  
 T.M. (24-3) (1-35A)  
 11.090 ACRES  
 ZONED A1-B1

Large/Small Plat(s) Recorded  
 herewith as # 090029801