

090007014

City of Williamsburg & County of James City
Circuit Court: This PLAT was recorded on
10 March 2009
at 12:28 AM PM, PB PG
DOCUMENT # 090007014
BETSY B. WOOLRIDGE, CLERK
Betsy Woolridge Clerk

TOWNHOUSE PLAT
Michelle Point
STONEHOUSE DISTRICT - JAMES CITY COUNTY, VIRGINIA
SCALE: 1" = 60' JANUARY 27, 2009



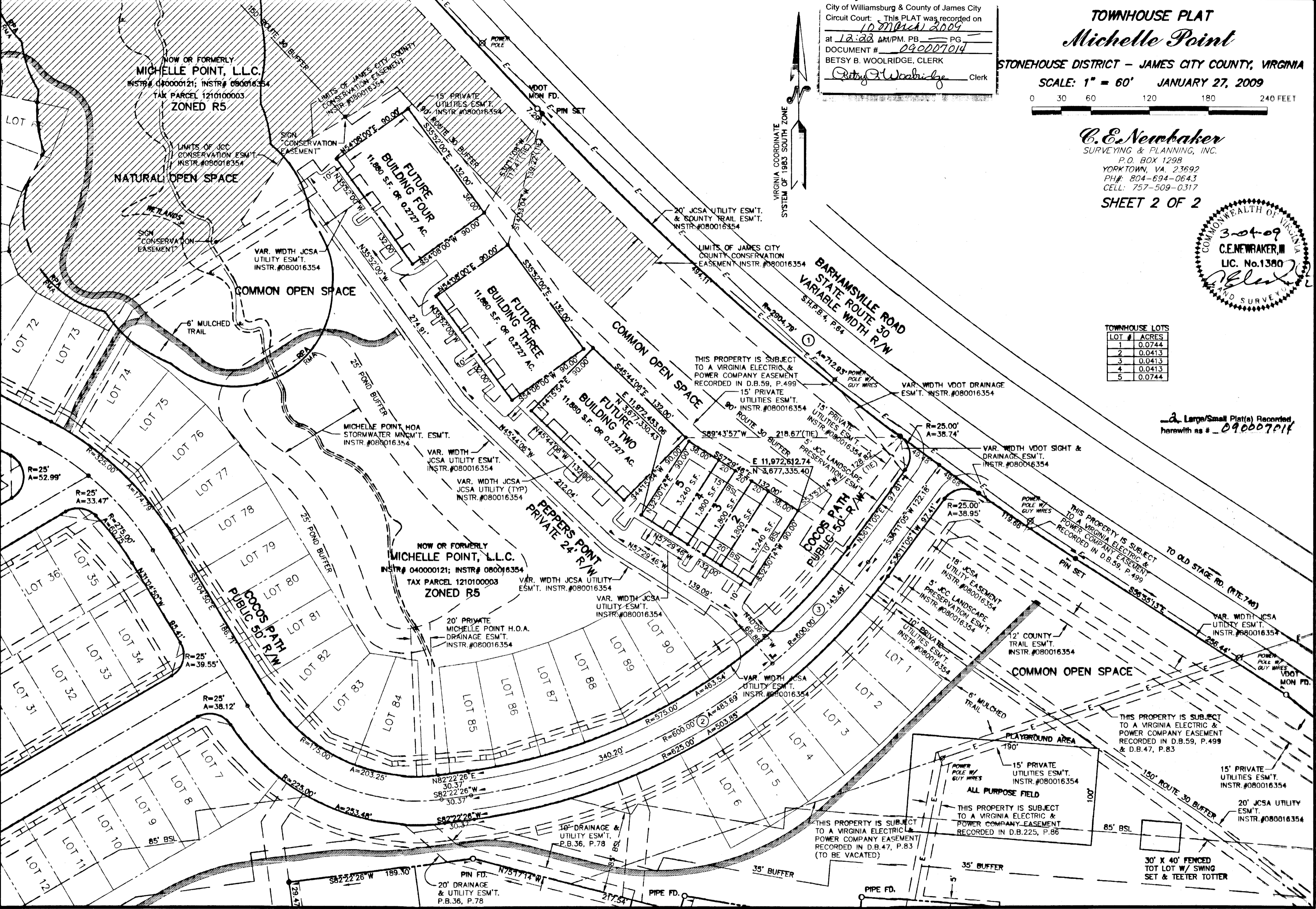
C.E. Newbaker
SURVEYING & PLANNING, INC.
P.O. BOX 1298
YORKTOWN, VA. 23692
PH#: 804-694-0643
CELL: 757-509-0317
SHEET 2 OF 2



TOWNHOUSE LOTS

LOT #	ACRES
1	0.0744
2	0.0413
3	0.0413
4	0.0413
5	0.0744

2. Large/Small Plat(s) Recorded
herewith as # 090007014



224R2TownHousePlat