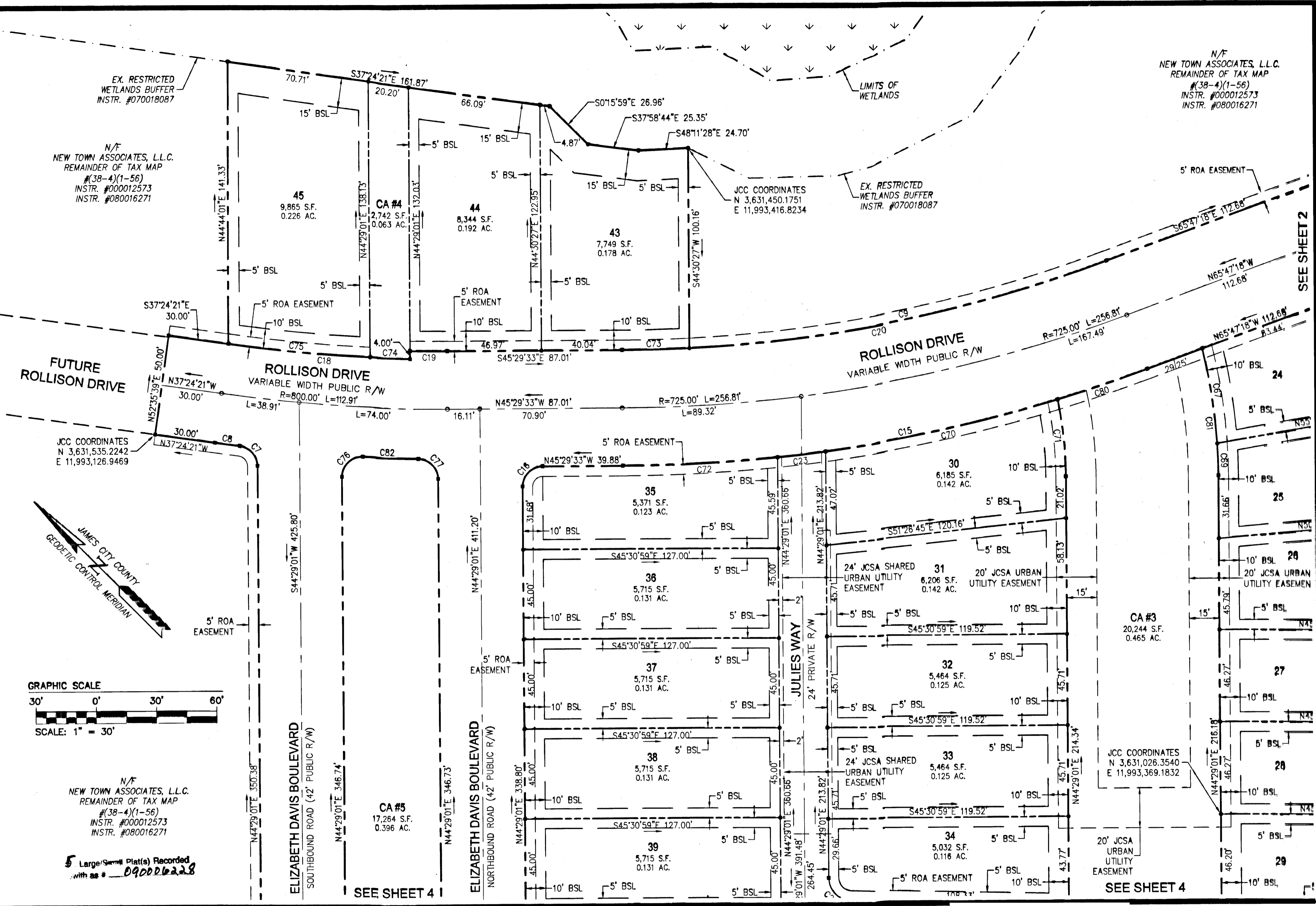
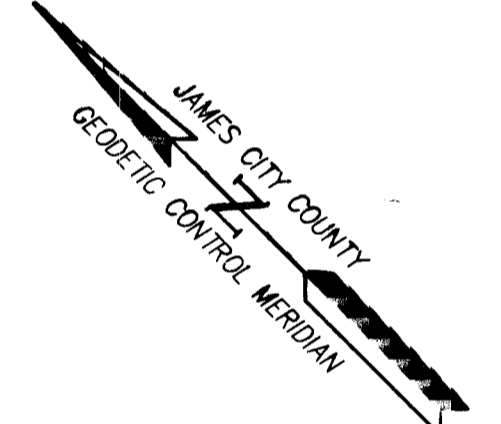


N/F
NEW TOWN ASSOCIATES, L.L.C.
REMAINDER OF TAX MAP
#(38-4)(1-56)
INSTR. #000012573
INSTR. #080016271

N/F
NEW TOWN ASSOCIATES, L.L.C.
REMAINDER OF TAX MAP
#(38-4)(1-56)
INSTR. #000012573
INSTR. #080016271

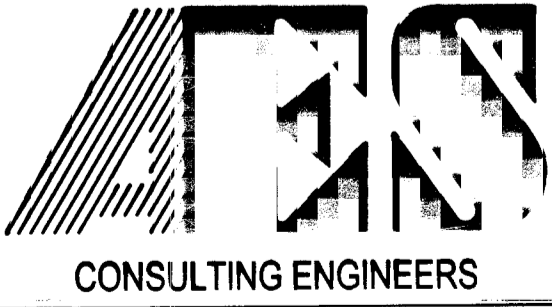


09006228



N/F
NEW TOWN ASSOCIATES, L.L.C.
REMAINDER OF TAX MAP
#(38-4)(1-56)
INSTR. #000012573
INSTR. #080016271

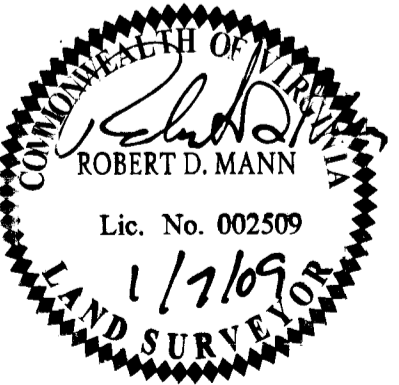
5 Large Small Plats Recorded
with as # 09006228



5248 Olde Towne Road, Suite 1
Williamsburg, Virginia 23188
(757) 253-0040
Fax (757) 220-8994

PLAT OF SUBDIVISION
PHASE IX, SECTION 7
NEW TOWN
OWNED BY NEW TOWN ASSOCIATES, L.L.C.

BERKELEY DISTRICT JAMES CITY COUNTY VIRGINIA



City of Williamsburg & County of James City Circuit Court: This PLAT was recorded on <u>3 March 2009</u>			
at <u>1:29</u> AM/PM, PG			
DOCUMENT # <u>09006228</u>			
BETSY B. WOOLRIDGE, CLERK			
<u>Betsy Woolridge</u> Clerk			
1	1/7/09	REVISED PER COUNTY COMMENTS	RDM RDM
No.	DATE	REVISION / COMMENT / NOTE	REVISED BY REVIEWED BY

Designed AES	Drawn AWT
Scale 1"=30'	Date 11/18/08
Project No. 6632-07-02	
Drawing No. 5 of 5	

S:\Louis\6632\ST02-Phase9\dwg\SurfPlat\663257 PH IX SUBD SH 5.dwg, 1/7/2009 1:34:24 PM, stephen.cookie