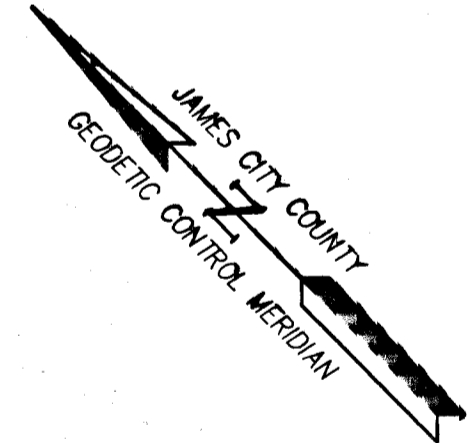
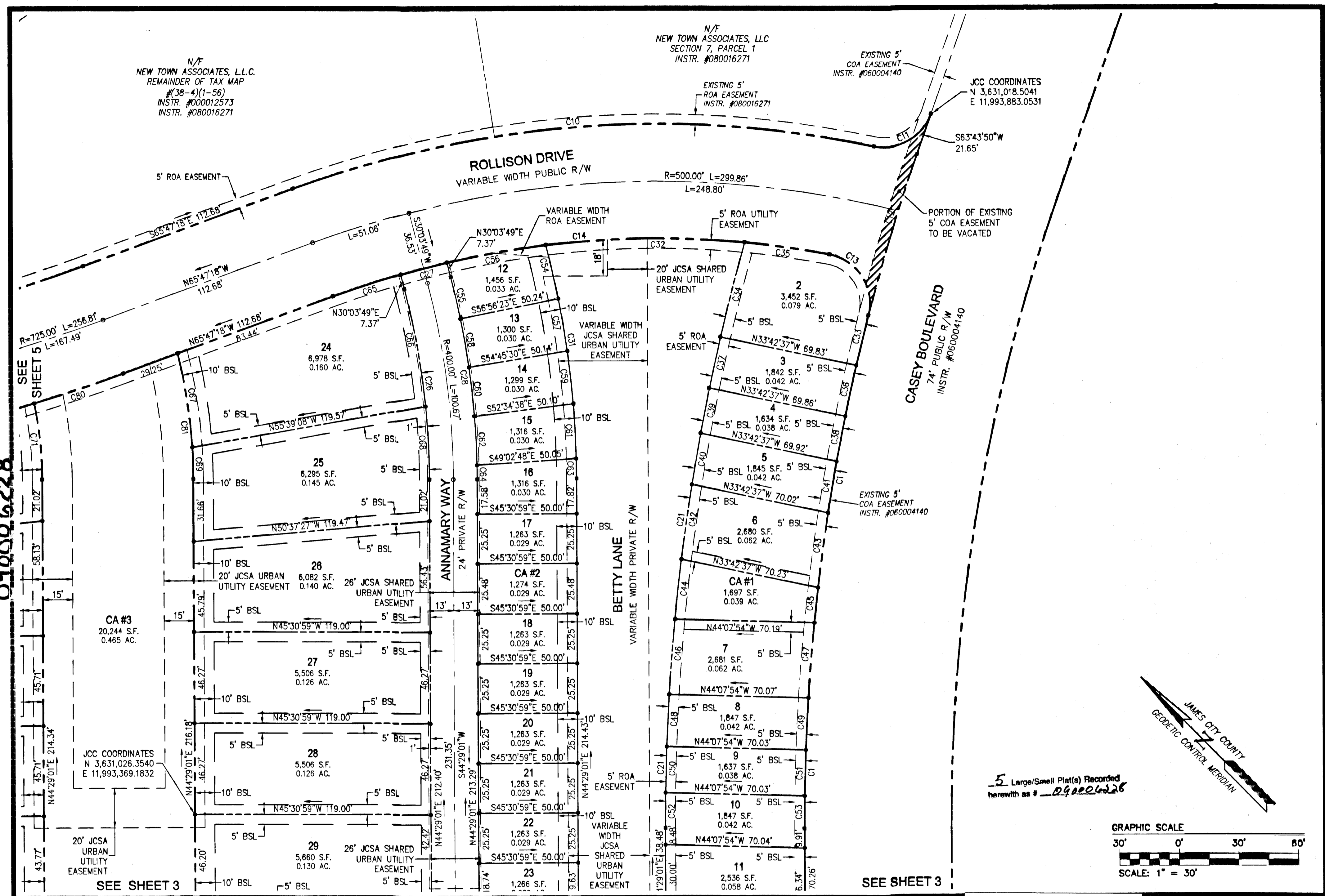
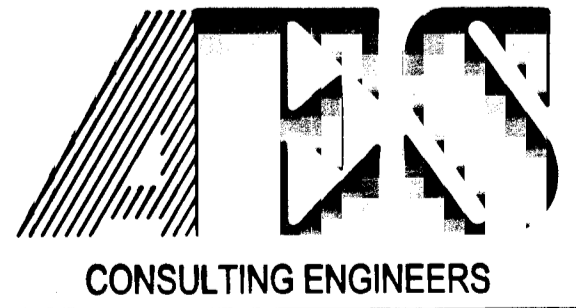
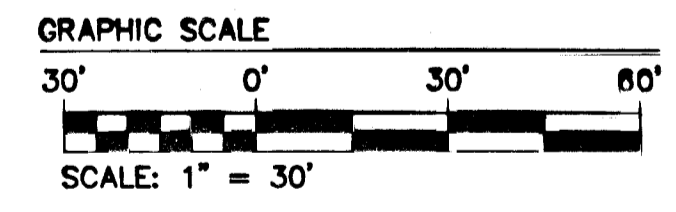


S:\Jobs\6632\1702-Phase9\dwg\Surf\Plats\6632S7 PH IX SUBD SH 2.dwg, 1/8/2009 3:31:39 PM, stephen.cooke

090006228



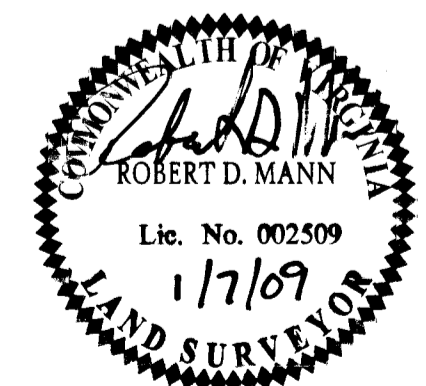
5 Large/Small Plat(s) Recorded herewith as # 090006228



5248 Olde Towne Road, Suite 1
Williamsburg, Virginia 23188
(757) 253-0040
Fax (757) 220-8994

PLAT OF SUBDIVISION
PHASE IX, SECTION 7
NEW TOWN
OWNED BY NEW TOWN ASSOCIATES, LLC.

BERKELEY DISTRICT. JAMES CITY COUNTY VIRGINIA



City of Williamsburg & County of James City Circuit Court: This PLAT was recorded on <u>3 March 2009</u> at <u>1:29</u> AM/PM, PB <u>PG</u>				
DOCUMENT # <u>090006228</u>				
BETSY B. WOOLRIDGE, CLERK				
<u>Betsy B. Woolridge</u> Clerk				
1	1/7/09	REVISED PER COUNTY COMMENTS	RDM	RDM
No.	DATE	REVISION / COMMENT / NOTE	REVIEWED BY	REVIEWED BY

Designed	Drawn
AES	AWT
Scale	Date
1"=30'	11/18/08
Project No.	
6632-07-02	
Drawing No.	
2 of 5	

WILLIAMSBURG • RICHMOND • GLOUCESTER • FREDERICKSBURG