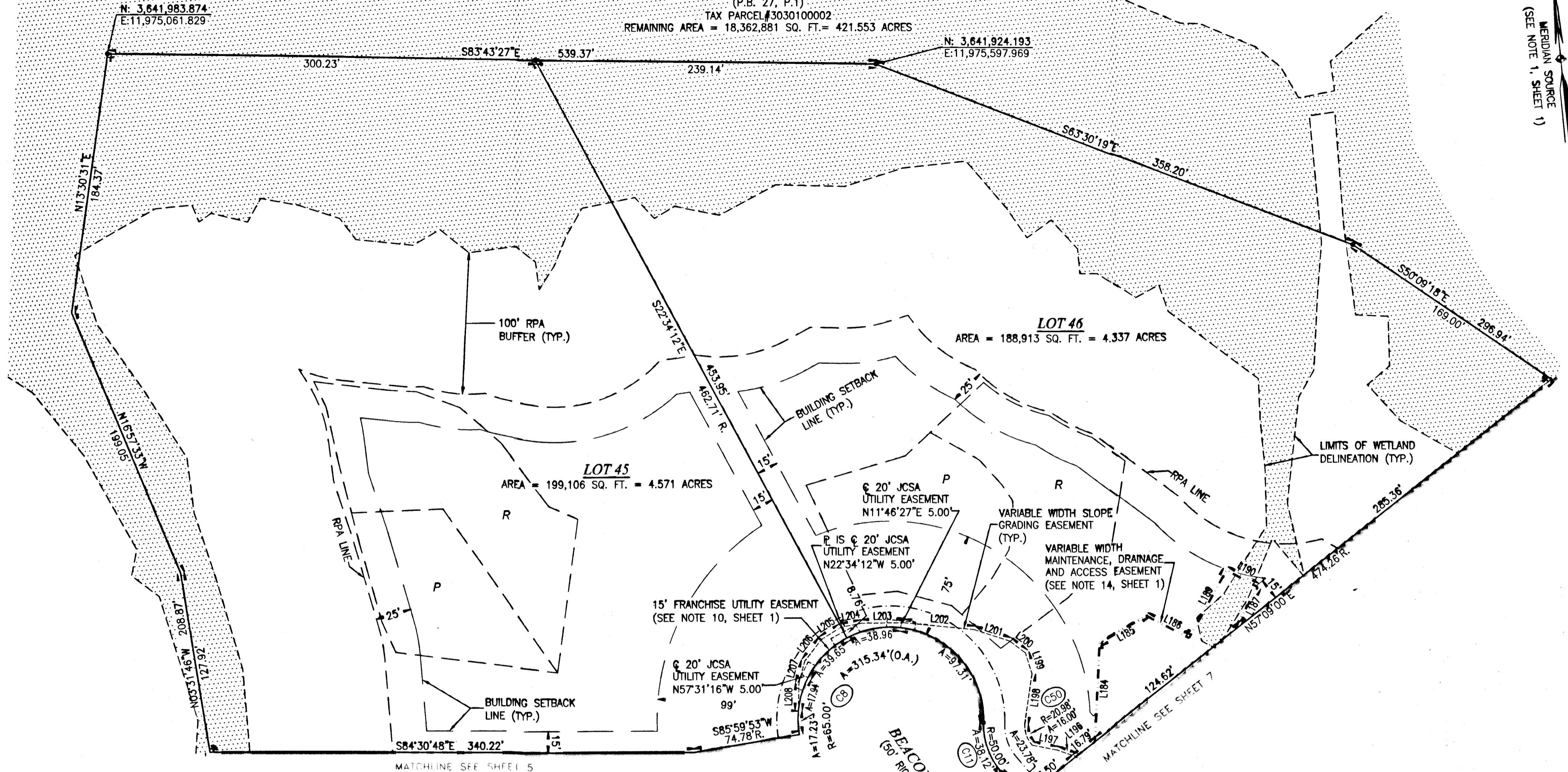


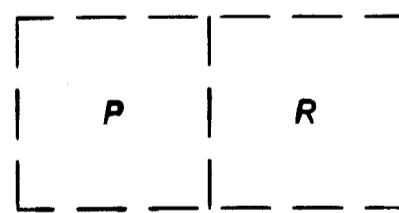
090004678

REMAINDER OF PROPERTY OF  
JCC, L.L.C.  
(INSTRUMENT NO. 040024438)  
(P.B. 27, P.1)  
TAX PARCEL #3030100002  
REMAINING AREA = 18,362,881 SQ. FT. = 421.553 ACRES

MERIDIAN SOURCE  
(SEE NOTE 1, SHEET 1)



SEPTIC DRAINFIELD LEGEND



PRIMARY DRAINFIELD  
RESERVE DRAINFIELD  
(SEE NOTE 8, SHEET 1)

DELINEATED WETLANDS

• - DENOTES IRON PIN TO BE SET

SEE SHEET 1 FOR NOTES AND CERTIFICATIONS  
SEE SHEET 3 FOR LINE, CURVE AND AREA TABLES

COMMONWEALTH OF VIRGINIA  
CITY OF WILLIAMSBURG & COUNTY OF JAMES CITY CIRCUIT COURT. THIS 12 DAY OF February, 2008  
THE PLAT SHOWN HEREON WAS PRESENTED AND ADMITTED TO THE RECORD AS THE LAW DIRECTS. AT 10:41 AM/PM  
INSTRUMENT # 090004678

TESTE: *Betsy B. Woolridge*  
BETSY B. WOOLRIDGE, CLERK  
By *Claudia A. Ginkholz, De Clerk*



16 Large/Small Plat(s) Recorded  
herewith as # 090004678

SUBDIVISION PLAT  
OF  
**LIBERTY RIDGE**

SECTION 1  
JAMES CITY COUNTY, VIRGINIA

SCALE: 1"=50'  
JANUARY 28, 2008  
REVISED: SEPTEMBER 26, 2008

ROUSE-SIRINE ASSOCIATES, LTD.  
LAND SURVEYORS & MAPPING CONSULTANTS  
333 OFFICE SQUARE LANE  
VIRGINIA BEACH, VIRGINIA 23462  
TEL: (757)490-2308; FAX: (757)499-9136  
www.rouse-sirine.com



0 25 50 100 150 FEET

GRAPHIC SCALE

SHEET 8 OF 18