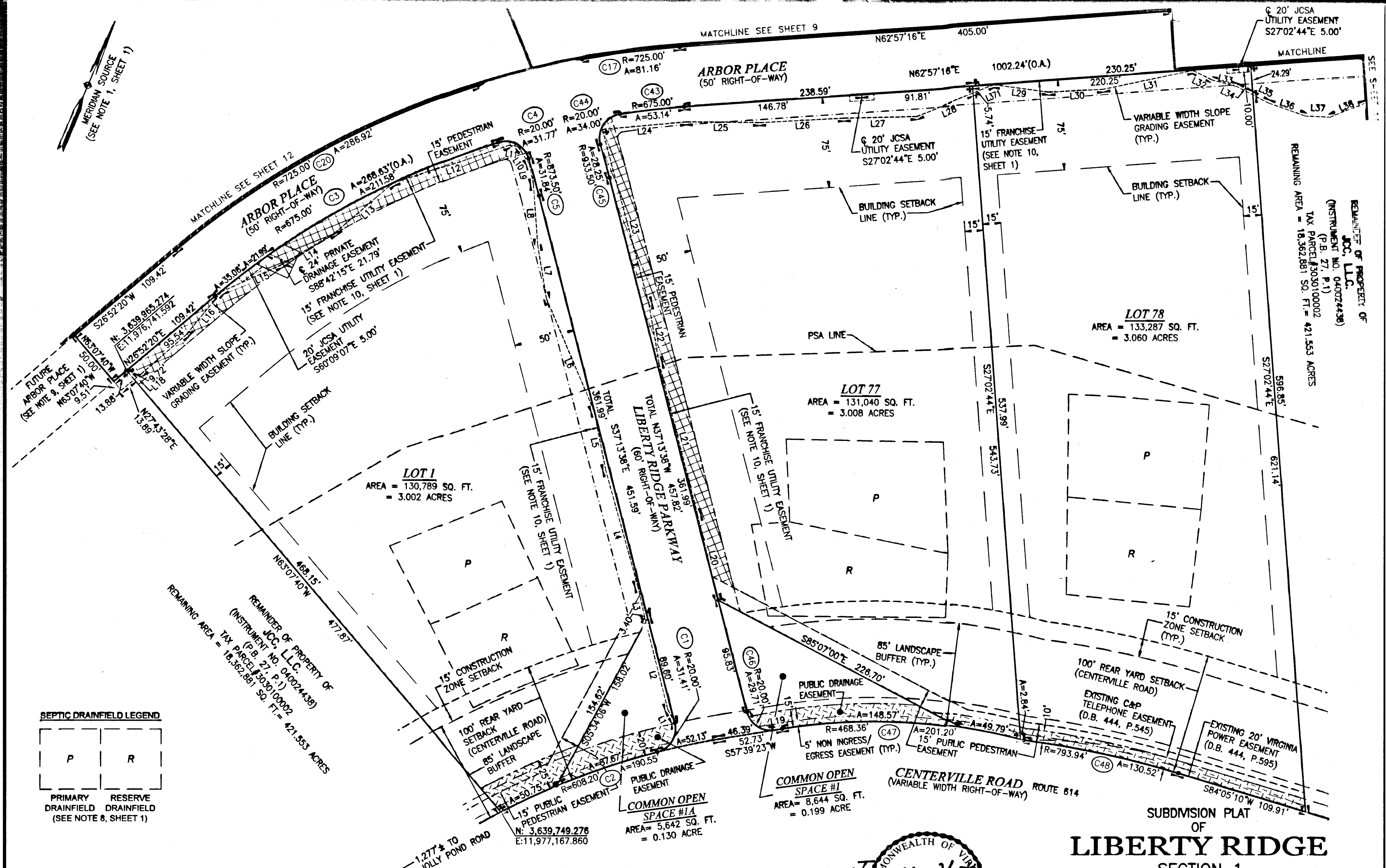
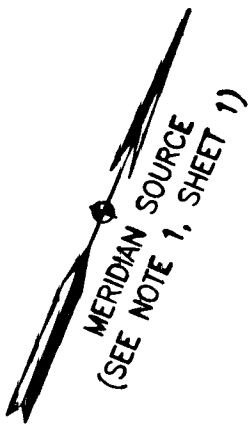
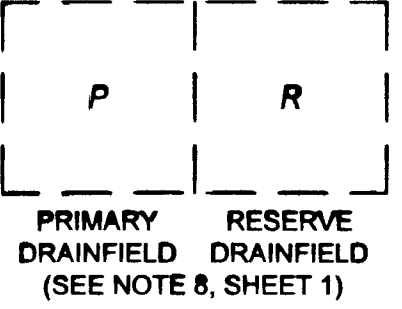


09000 4678



SEPTIC DRAINFIELD LEGEND



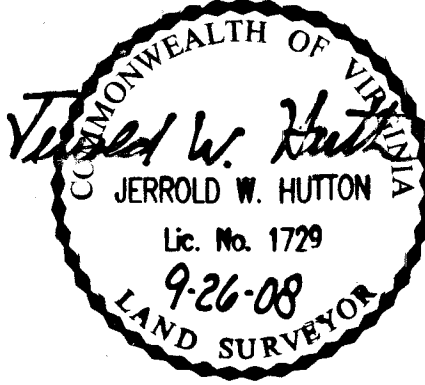
- PUBLIC DRAINAGE EASEMENT
- DELINEATED WETLANDS
- PEDESTRIAN EASEMENT
- - DENOTES IRON PIN TO BE SET

SEE SHEET 1 FOR NOTES AND CERTIFICATIONS  
SEE SHEET 3 FOR LINE, CURVE AND AREA TABLES

16 Large (Small) Plat(s) Recorded herewith as # 090004678

COMMONWEALTH OF VIRGINIA  
CITY OF WILLIAMSBURG & COUNTY OF JAMES CITY CIRCUIT COURT. THIS 12 DAY OF February, 2009.  
THE PLAT SHOWN HEREON WAS PRESENTED AND ADMITTED TO THE RECORD AS THE LAW DIRECTS. AT 10:41 AM/PM  
INSTRUMENT # 090004678

TESTE: *Betsy B. Woolridge*  
BETSY B. WOOLRIDGE, CLERK  
*By Claudia Stankholz, Dep. Clerk*



# SUBMISSION PLAT OF LIBERTY RIDGE

SECTION 1  
JAMES CITY COUNTY, VIRGINIA

SCALE: 1"=50'  
JANUARY 28, 2008  
REVISED: SEPTEMBER 26, 2008

ROUSE-SIRINE ASSOCIATES, LTD.  
LAND SURVEYORS & MAPPING CONSULTANTS  
333 OFFICE SQUARE LANE  
VIRGINIA BEACH, VIRGINIA 23462  
TEL: (757)490-2308; FAX: (757)499-9138  
www.rouse-sirine.com

