

090003199

PLAT SHOWING JCSA UTILITY EASEMENTS
ON THE PROPERTY STANDING
IN THE NAME OF
BUSCH PROPERTIES, INC.
PLAT BOOK 48, PAGE 17
ROBERTS DISTRICT
JAMES CITY COUNTY, VIRGINIA

DATE: 09/03/08 SHEET 2 OF 2 SCALE: 1"=60'
PROJECT NO: 31039.08 DRAWN BY: MAG

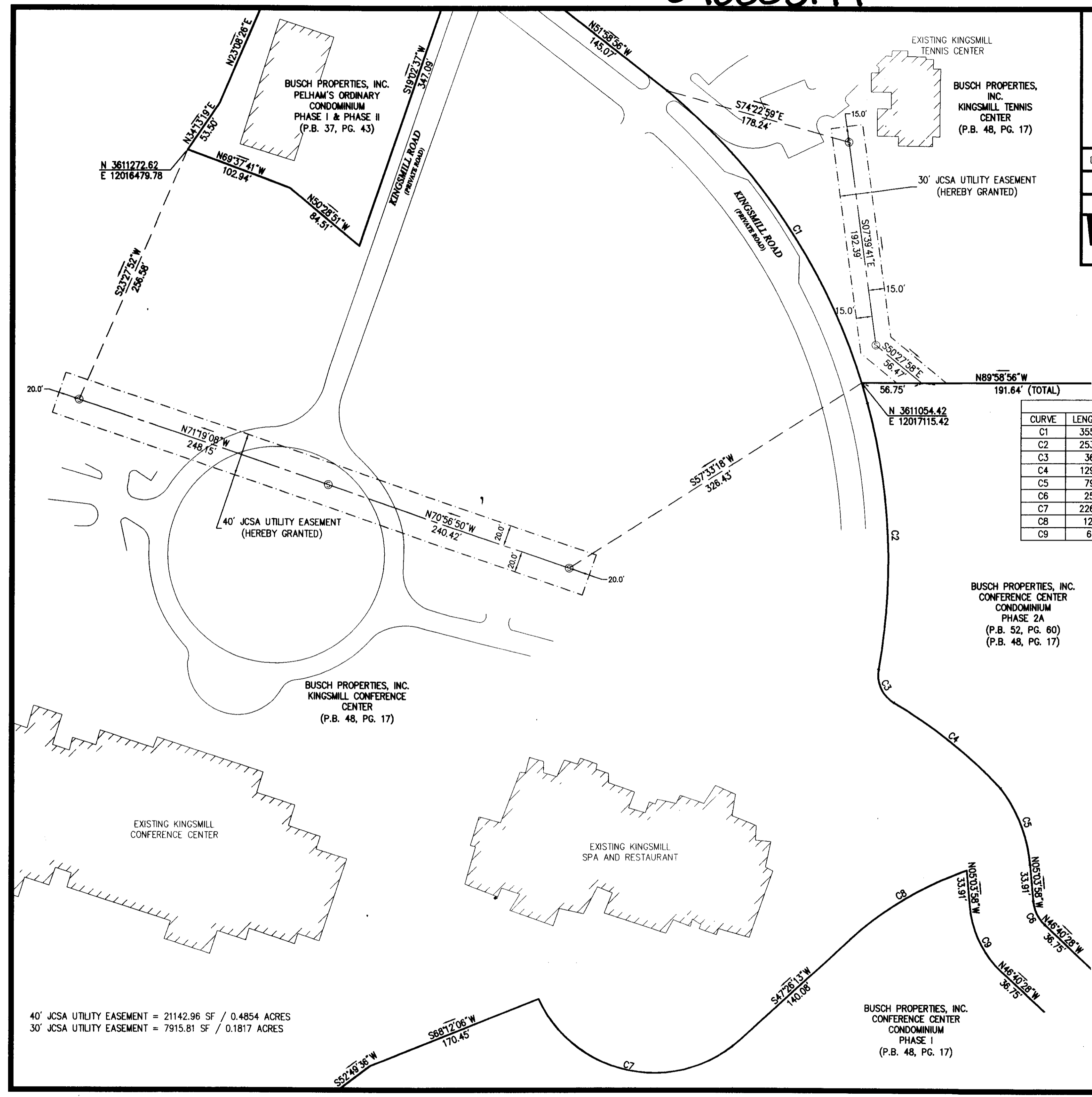
VHB Vanasse Hangen Brustlin, Inc.
Transportation Land Development Environmental Services
351 McLaws Circle, Suite 3
Williamsburg, Virginia 23185-6316
(757) 220 0500 FAX (757) 220 8544

Legend

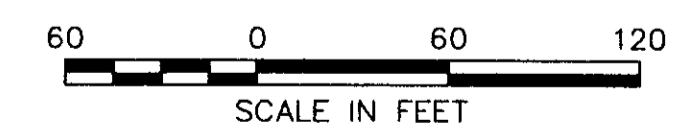
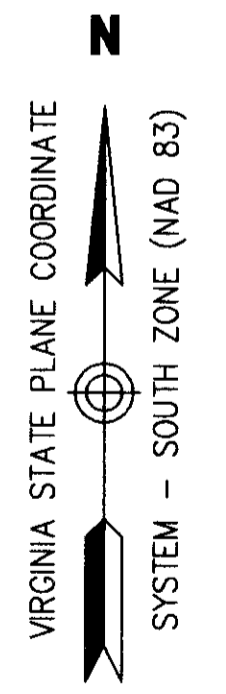
⊙ SANITARY MANHOLE
P.B. PLAT BOOK
PG. PAGE

CURVE TABLE

| CURVE | LENGTH | RADIUS | DELTA | TANGENT | BEARING | CHORD |
|-------|--------|--------|------------|---------|-------------|--------|
| C1 | 355.07 | 575.00 | 35°22'51" | 183.40 | N32°51'27"W | 349.46 |
| C2 | 253.50 | 575.00 | 25°15'36" | 128.84 | N02°32'13"W | 251.45 |
| C3 | 36.68 | 30.00 | 70°03'13" | 21.03 | N24°56'02"W | 34.44 |
| C4 | 129.40 | 430.00 | 17°14'31" | 65.19 | N51°20'23"W | 128.91 |
| C5 | 79.00 | 140.30 | 32°15'43" | 40.58 | N21°11'50"W | 77.96 |
| C6 | 25.74 | 35.45 | 41°36'07" | 13.47 | N25°52'24"W | 25.18 |
| C7 | 226.08 | 120.00 | 107°56'36" | 164.99 | S78°35'29"E | 194.09 |
| C8 | 129.11 | 311.00 | 23°47'10" | 65.50 | N59°19'48"E | 128.18 |
| C9 | 69.31 | 95.45 | 41°36'22" | 36.26 | S25°52'17"E | 67.80 |



BUSCH PROPERTIES, INC.
CONFERENCE CENTER
CONDOMINIUM
PHASE 2A
(P.B. 52, PG. 60)
(P.B. 48, PG. 17)



Large Record Plats Recorded
with # 090003199

City of Williamsburg & County of James City
Circuit Court. This PLAT was recorded on
at 8:50 AM on 09-03-08 PG. 17
DOCUMENT # 090003199
BETSY B. WOOLRIDGE, CLERK
Cathy St. Lawrence Clerk

40' JCSA UTILITY EASEMENT = 21142.96 SF / 0.4854 ACRES
30' JCSA UTILITY EASEMENT = 7915.81 SF / 0.1817 ACRES

BUSCH PROPERTIES, INC.
CONFERENCE CENTER
CONDOMINIUM
PHASE I
(P.B. 48, PG. 17)