

083247

LEGEND

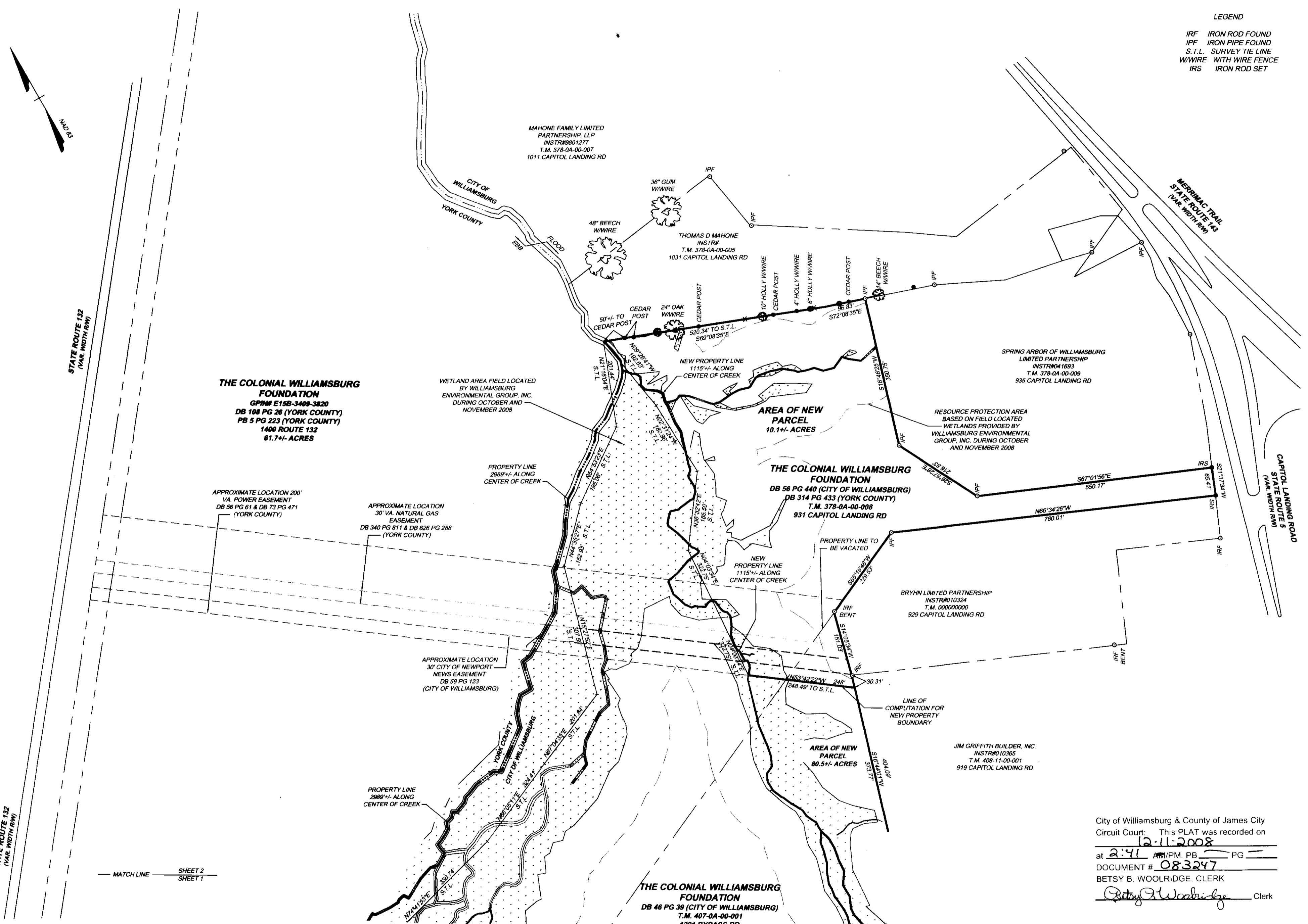
IRF IRON ROD FOUND
 IPF IRON PIPE FOUND
 S.T.L. SURVEY TIE LINE
 WWIRE WITH WIRE FENCE
 IRS IRON ROD SET

THIS DRAWING PREPARED AT THE
CORPORATE OFFICE
 1001 Boulders Parkway, Suite 300 | Richmond, VA 23225
 TEL 804.200.6500 FAX 804.560.1016 www.timmons.com

YOUR VISION ACHIEVED THROUGH OURS.

Site Development Residential Infrastructure Technology

TIMMONS GROUP



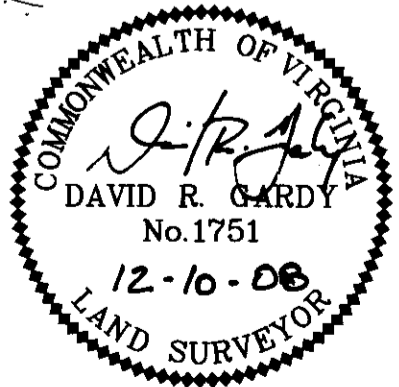
THE COLONIAL WILLIAMSBURG FOUNDATION
 GP/PM E158-3489-3820
 DB 188 PG 26 (YORK COUNTY)
 PB 5 PG 223 (YORK COUNTY)
 1400 ROUTE 132
 81.7+/- ACRES

THE COLONIAL WILLIAMSBURG FOUNDATION
 DB 58 PG 440 (CITY OF WILLIAMSBURG)
 DB 314 PG 433 (YORK COUNTY)
 T.M. 378-0A-00-008
 931 CAPITOL LANDING RD

THE COLONIAL WILLIAMSBURG FOUNDATION
 DB 46 PG 39 (CITY OF WILLIAMSBURG)
 T.M. 407-0A-00-001
 1201 BYPASS RD

- GENERAL NOTES:
1. THIS SURVEY IS BASED ON AN ACTUAL FIELD SURVEY CONDUCTED BY THIS FIRM DURING THE MONTHS OF OCTOBER AND NOVEMBER, 2008.
 2. THIS SURVEY WAS CONDUCTED WITHOUT THE BENEFIT OF A CURRENT TITLE COMMITMENT, AND AS SUCH, MAY NOT REFLECT ALL MATTERS OF RECORD AFFECTING THE SUBJECT PROPERTY.
 3. JURISDICTIONAL WETLANDS, RESOURCE PROTECTION AREAS, AND OTHER DESIGNATED ENVIRONMENTAL RESOURCES INDICATED HEREON ARE PROVIDED BY WILLIAMSBURG ENVIRONMENTAL GROUP, INC.
 4. STREAMS WHICH DEFINE PROPERTY BOUNDARIES WERE ALL BASED ON FIELD-RUN SURVEYS. OTHER STREAM LOCATIONS, AND SOME OTHER PHYSICAL FEATURES (ADJACENT PAVING, ETC.) INDICATED HEREON, ARE BASED ON A COMBINATION OF FIELD-RUN LOCATIONS, AND OTHER SOURCES (I.E. PUBLISHED GIS INVENTORIES).

City of Williamsburg & County of James City
 Circuit Court: This PLAT was recorded on
12-11-2008
 at 2:41 P.M. PG 1
 DOCUMENT # 083247
 BETSY B. WOOLRIDGE, CLERK
Betsy B. Woolridge Clerk



PLAT SHOWING BOUNDARY LINE ADJUSTMENT BETWEEN THE PROPERTY OF THE COLONIAL WILLIAMSBURG FOUNDATION BEING 1201 BYPASS ROAD AND 931 CAPITOL LANDING ROAD, CITY OF WILLIAMSBURG, VIRGINIA

CITY OF WILLIAMSBURG	YORK COUNTY, VA.
DATE: NOV. 6, 2008	SCALE: 1" = 150'
SHEET 2 OF 2	J.N.: 26985
DRAWN BY: C. MARSTON	CHECK BY: D. GARDY

Y:\1908\26985 CWF 1201 BYPASS RD.dwg\Sheet\Plat\26985.dwg | Plotted on 12/10/2008 9:16 AM | by Chris Marston

