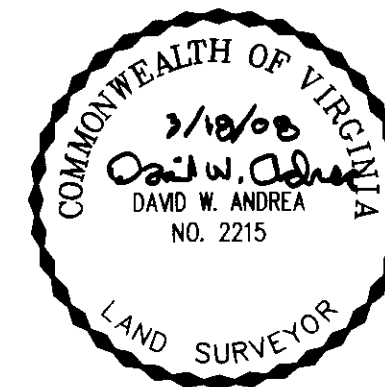


080700

PLAT SHOWING
 SUBDIVISION AND RIGHT OF WAY DEDICATION
**THE VILLAGE AT QUARTERPATH
 PHASE II**
 CITY OF WILLIAMSBURG, VIRGINIA

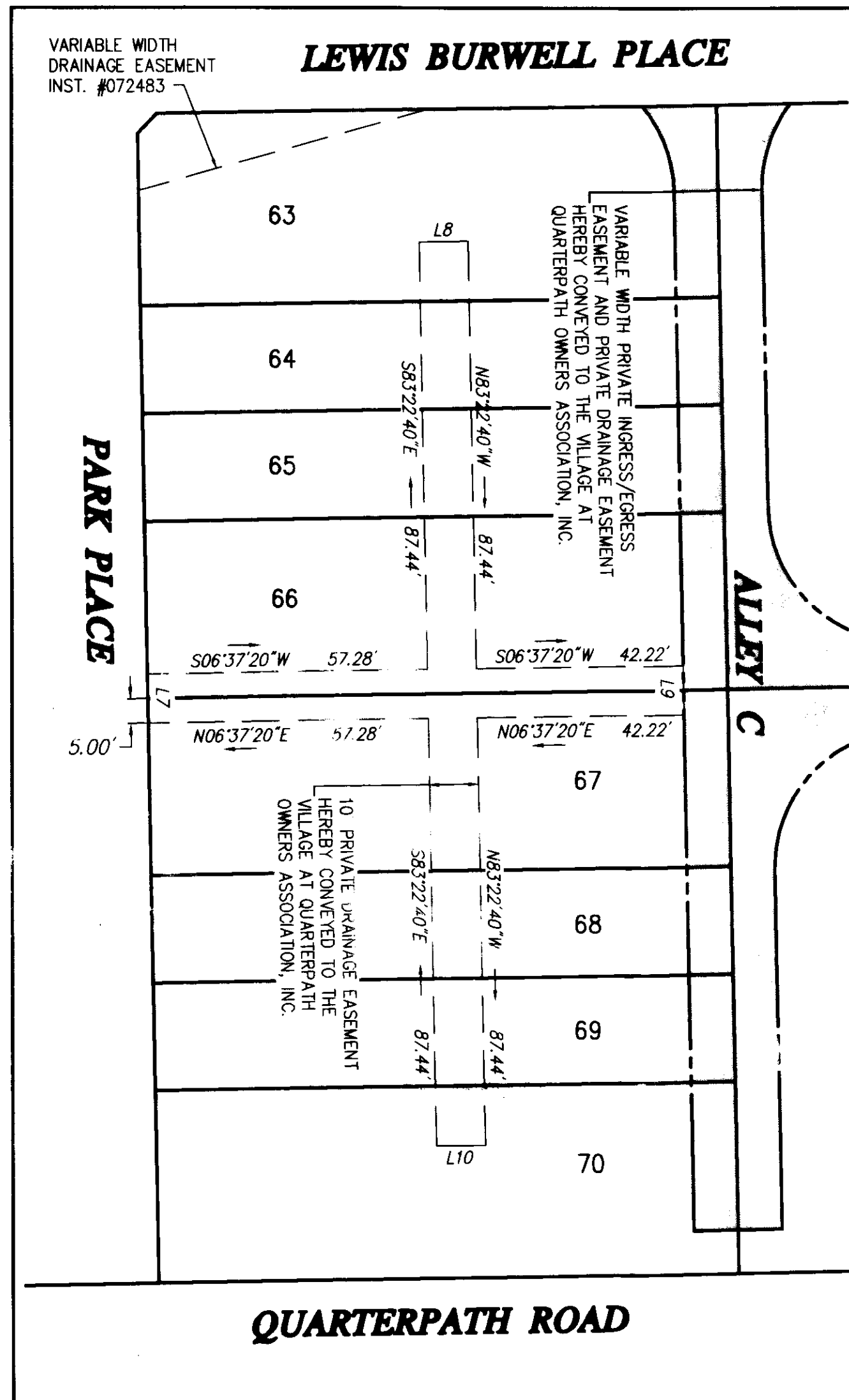


DATE: 01/23/08 SHEET 4 OF 4 SCALE: 1"=30'

PROJECT NO: 31980.01 DRAWN BY: DWP

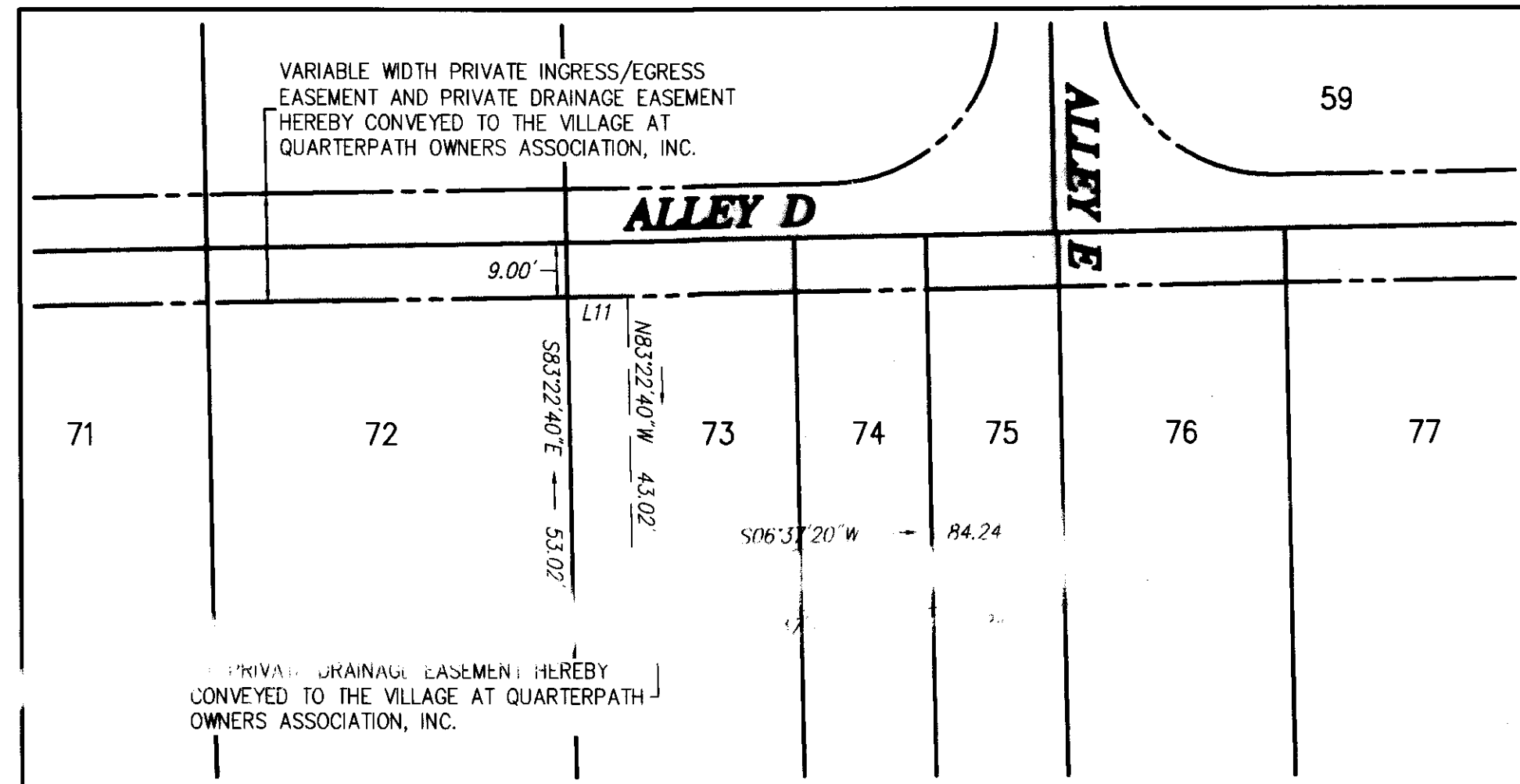
VHB Vanasse Hangen Brustlin, Inc.
 Transportation Land Development Environmental Services
 5544 Greenwich Road, Suite 302
 Virginia Beach, Virginia 23462-6563
 (757) 490-0132 • FAX (757) 490-0136

REVISED: 03/18/08



DETAIL A
 SCALE: 1"=25'

UTILITY EASEMENT CURVE DATA TABLE						
NUMBER	RADIUS	DELTA	ARC LENGTH	TANGENT	CHORD	CHORD BEARING
C6	43.50'	18°46'27"	14.25'	7.19'	14.19'	S02°45'54"E
C7	23.00'	90°00'00"	36.13'	23.00'	32.53'	S51°37'20"W
C8	23.00'	90°00'00"	36.13'	23.00'	32.53'	N38°22'40"W
C9	23.00'	90°00'00"	36.13'	23.00'	32.53'	S51°37'20"W
C10	23.00'	90°00'00"	36.13'	23.00'	32.53'	S38°22'40"E
C11	43.50'	18°46'27"	14.25'	7.19'	14.19'	S16°00'33"W



DETAIL B
 SCALE: 1"=25'

UTILITY EASEMENT LINE TABLE		
LINE	LENGTH	BEARING
L1	15.79'	N06°37'20"E
L2	3.00'	S83°22'40"E
L3	10.00'	N83°22'40"W
L4	20.00'	N06°37'20"E
L5	10.00'	S83°22'40"E
L6	28.00'	S06°37'20"W
L7	10.00'	S83°22'40"E
L8	10.00'	S06°37'20"W
L9	10.00'	N83°22'40"W
L10	10.00'	S06°37'20"W
L11	10.00'	S06°37'20"W
L12	10.00'	N83°22'40"W
L13	3.50'	N83°22'40"W
L14	1.20'	N82°31'55"W
L15	5.50'	N07°28'05"E
L16	1.20'	S82°31'55"E

4 Large/Small Plat(s) Recorded
 herewith as # 080700

State Of Virginia
 City Of Williamsburg

IN THE CLERK'S OFFICE OF THE CIRCUIT COURT FOR THE CITY OF WILLIAMSBURG AND COUNTY OF JAMES CITY, VIRGINIA THIS 7th DAY OF April, 2008. THIS MAP WAS PRESENTED AND ADMITTED TO RECORD AS THE LAW DIRECTS AS INSTRUMENT NUMBER 080700 @ 11:10 AM

TESTE: Betsy B. Woodside, Clerk
 CLERK
 BY: Claudia H. Hinkelholz, by Clerk