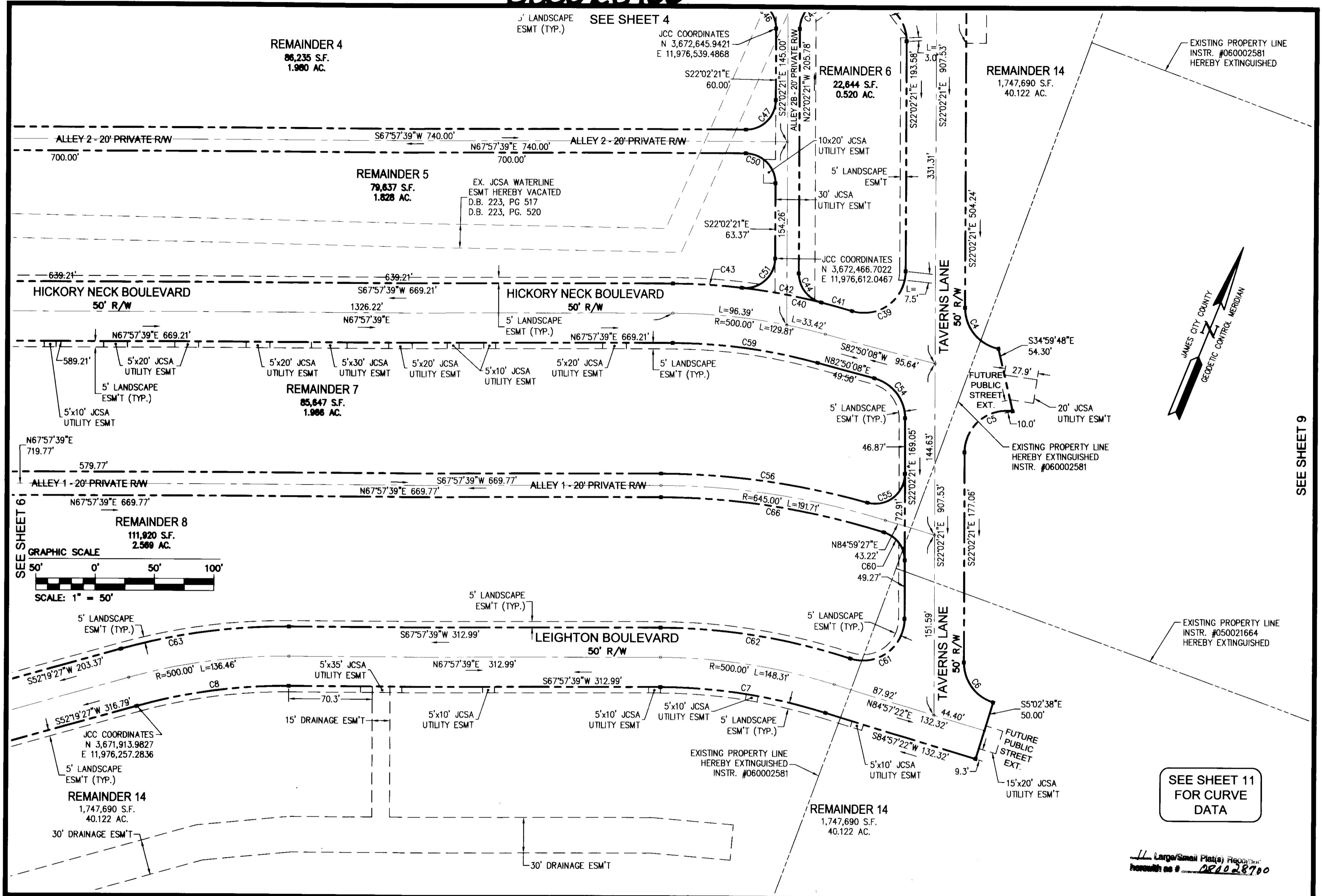
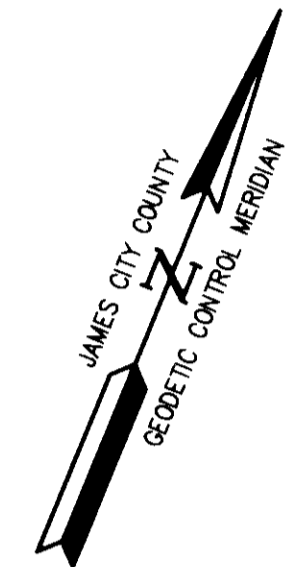
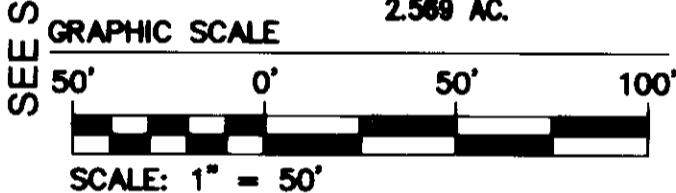


080028700



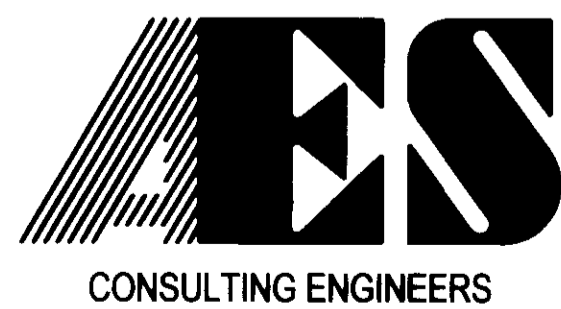
SEE SHEET 6



SEE SHEET 9

SEE SHEET 11 FOR CURVE DATA

Large/Small Plat(s) Record here with as # 080028700

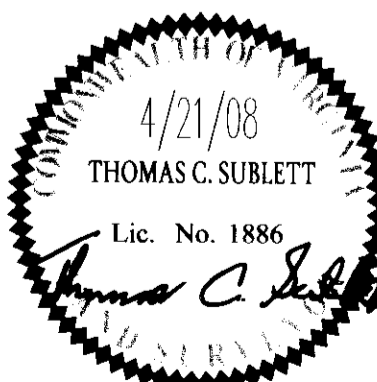


5248 Olde Towne Road, Suite 1
Williamsburg, Virginia 23188
(757) 253-0040
Fax (757) 220-8994

WILLIAMSBURG • RICHMOND • GLOUCESTER • FREDERICKSBURG

PLAT OF SUBDIVISION
WHITE HALL
SECTION 2, PHASE A
OWNER: RAUCH DEVELOPMENT CO., L.L.C.

STONEHOUSE DISTRICT JAMES CITY COUNTY VIRGINIA



City of Williamsburg & County of James City		Circuit Court: This PLAT was recorded on	
		December 2, 2008	
at 11:36 AM/PM, PB PG		DOCUMENT # 080028700	
BETSY B. WOOLRIDGE, CLERK		Betsy B. Woolridge, Clerk	
1	06/06/08	PER JAMES CITY COUNTY COMMENTS DATED 05/22/2008	ABS TCS
No.	DATE	REVISION / COMMENT / NOTE	REVISED BY

Designed	Drawn
TR	AWT
Scale	Date
1"=50'	4/21/08
Project No.	
9048-11	
Drawing No.	
7 of 11	