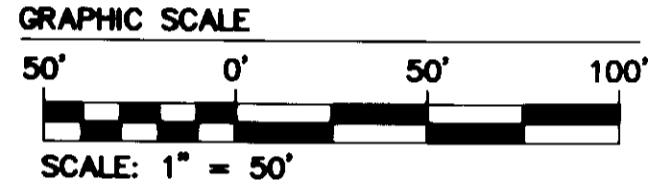
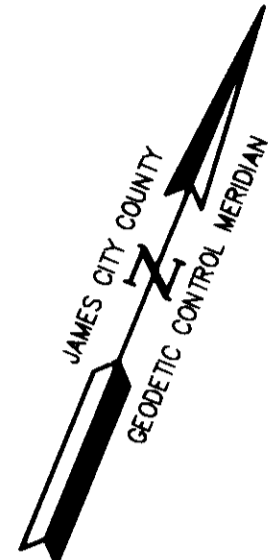


080028700

SEE SHEET 11
FOR CURVE
DATA

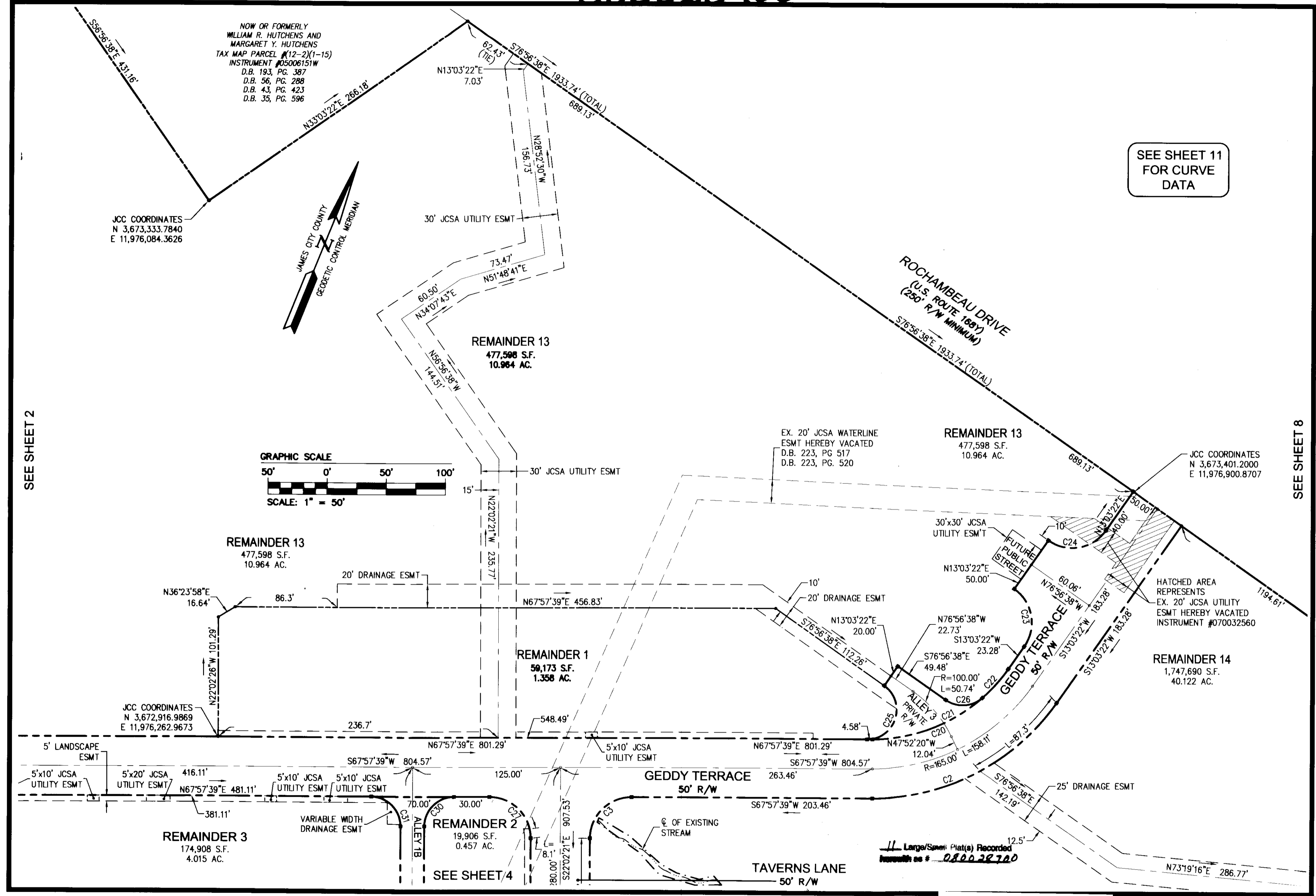
NOW OR FORMERLY
WILLIAM R. HUTCHENS AND
MARGARET Y. HUTCHENS
TAX MAP PARCEL #12-2(1-15)
INSTRUMENT #05006151W
D.B. 193, PG. 387
D.B. 56, PG. 288
D.B. 43, PG. 423
D.B. 35, PG. 596

JCC COORDINATES
N 3,673,333.7840
E 11,976,084.3626



SEE SHEET 2

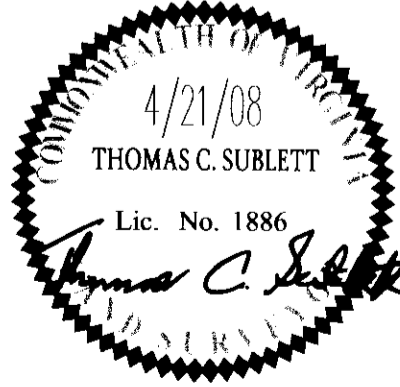
SEE SHEET 8



5248 Olde Towne Road, Suite 1
Williamsburg, Virginia 23188
(757) 253-0040
Fax (757) 220-8994

**PLAT OF SUBDIVISION
WHITE HALL**
SECTION 2, PHASE A
OWNER: RAUCH DEVELOPMENT CO., L.L.C.

STONEHOUSE DISTRICT JAMES CITY COUNTY VIRGINIA



City of Williamsburg & County of James City Circuit Court: This PLAT was recorded on <i>11:30</i> (December) 2008 at 11:30 AM/PM, PG. <i>1</i> DOCUMENT # <i>080028700</i> BETSY B. WOOLRIDGE, CLERK <i>Betsy B. Woolridge</i> Clerk		Designed TR S	Drawn AWT
1 06/06/08 PER JAMES CITY COUNTY COMMENTS DATED 05/22/2008		Scale 1"=50'	Date 4/21/08
No. DATE REVISION / COMMENT / NOTE		Project No. 9048-11	Drawing No. 3 of 11
		REVISED BY	REVIEWED BY