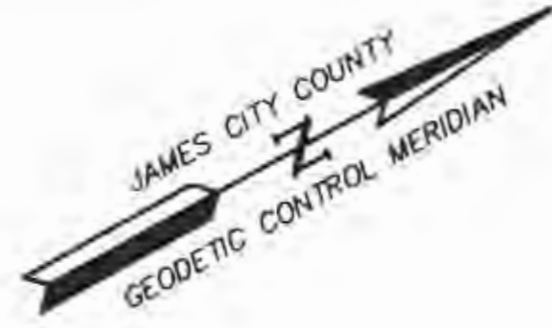
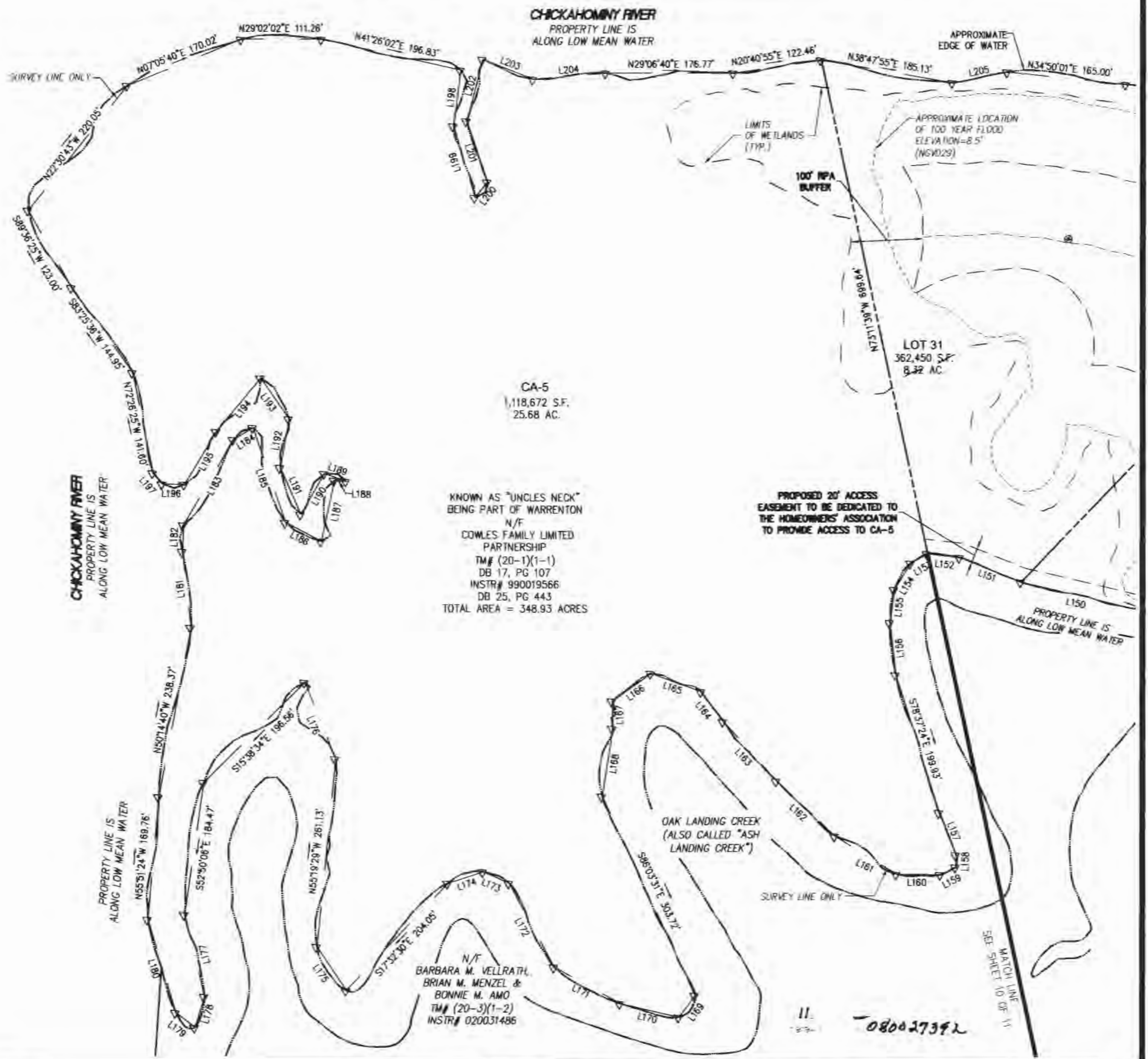


080027392

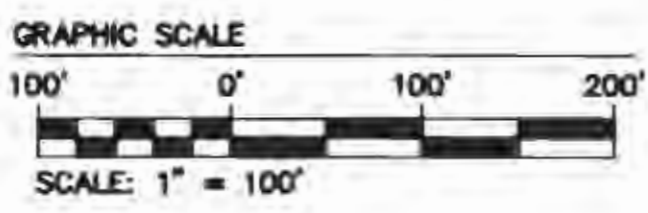


LINE	BEARING	LENGTH
L150	S42°04'32"W	169.37'
L151	S50°43'52"W	91.39'
L152	S35°25'00"W	44.87'
L153	S00°00'02"E	26.88'
L154	S28°55'02"E	42.91'
L155	S53°28'27"E	46.06'
L156	S67°30'31"E	72.79'
L157	S82°47'22"E	62.49'
L158	S59°20'44"E	16.86'
L159	S02°26'48"W	23.43'
L160	S29°22'52"W	61.15'
L161	S60°44'35"W	100.58'
L162	S72°25'50"W	111.19'
L163	S77°08'34"W	110.52'
L164	S82°31'46"W	51.44'
L165	S49°00'53"W	73.85'
L166	S06°34'00"E	65.59'
L167	S62°08'04"E	38.18'
L168	S51°57'50"E	94.59'
L169	S24°25'42"E	37.48'
L170	S42°05'20"W	83.55'
L171	S57°43'02"W	104.09'
L172	N09°18'20"W	131.51'
L173	S52°15'12"W	39.20'
L174	S10°40'00"W	51.32'
L175	S85°01'54"W	72.52'
L176	N83°05'34"W	114.08'
L177	S74°33'41"E	116.45'
L178	S44°05'27"E	44.55'
L179	S66°38'24"W	33.50'
L180	N77°46'03"W	134.81'
L181	N67°17'48"W	106.23'
L182	N59°04'43"W	36.43'
L183	N30°40'51"W	136.70'
L184	N02°42'28"W	31.75'
L185	S79°55'53"E	138.89'
L186	N56°43'25"E	56.22'
L187	N48°53'31"W	86.27'
L188	N32°31'58"E	16.27'
L189	S48°31'05"W	31.70'
L190	S30°45'45"E	65.50'
L191	N84°42'01"W	71.05'
L192	N50°42'47"W	68.16'
L193	S84°16'10"W	68.84'
L194	S21°22'21"E	96.04'
L195	S29°52'14"E	84.83'
L196	S29°42'54"W	30.76'
L197	S78°59'11"W	20.12'
L198	S53°45'20"E	77.81'
L199	S77°46'01"E	103.09'
L200	N22°34'31"W	27.62'
L201	N79°47'15"W	88.66'
L202	N46°24'34"W	88.02'
L203	N50°11'16"E	74.53'
L204	N24°06'48"E	100.97'
L205	N17°53'33"E	77.30'



KNOWN AS "UNCLES NECK"
BEING PART OF WARRENTON
N/F
COWLES FAMILY LIMITED
PARTNERSHIP
TM# (20-1)(1-1)
DB 17, PG 107
INSTR# 990019566
DB 25, PG 443
TOTAL AREA = 348.93 ACRES

N/F
BARBARA M. VELLRATH,
BRIAN M. MENZEL &
BONNIE M. AMO
TM# (20-3)(1-2)
INSTR# 020031486



5248 Olde Towne Road, Suite 1
Williamsburg, Virginia 23188
(757) 253-0040
Fax (757) 220-8994

PLAT OF SUBDIVISION
**RIVER'S BEND @
UNCLES NECK**
STONEHOUSE DISTRICT JAMES CITY COUNTY VIRGINIA



City of Williamsburg & County of James City Circuit Court: This PLAT was recorded on <u>12 November 2008</u> at <u>10:27</u> AM/PM PB PG DOCUMENT # <u>080027392</u> BETSY B. WOOLDRIDGE, CLERK <u>Betsy B. Wooldrige</u> Clerk		DESIGNED JAG	DRAWN RLS
REVISION / COMMENT / NOTE		REVISION BY	REMOVED BY
1	03/14/08	REVISOR	JAG

Scale	Date
1"=100'	09/27/07
Project No.	
9737-01	
Drawing No.	
11 OF 11	