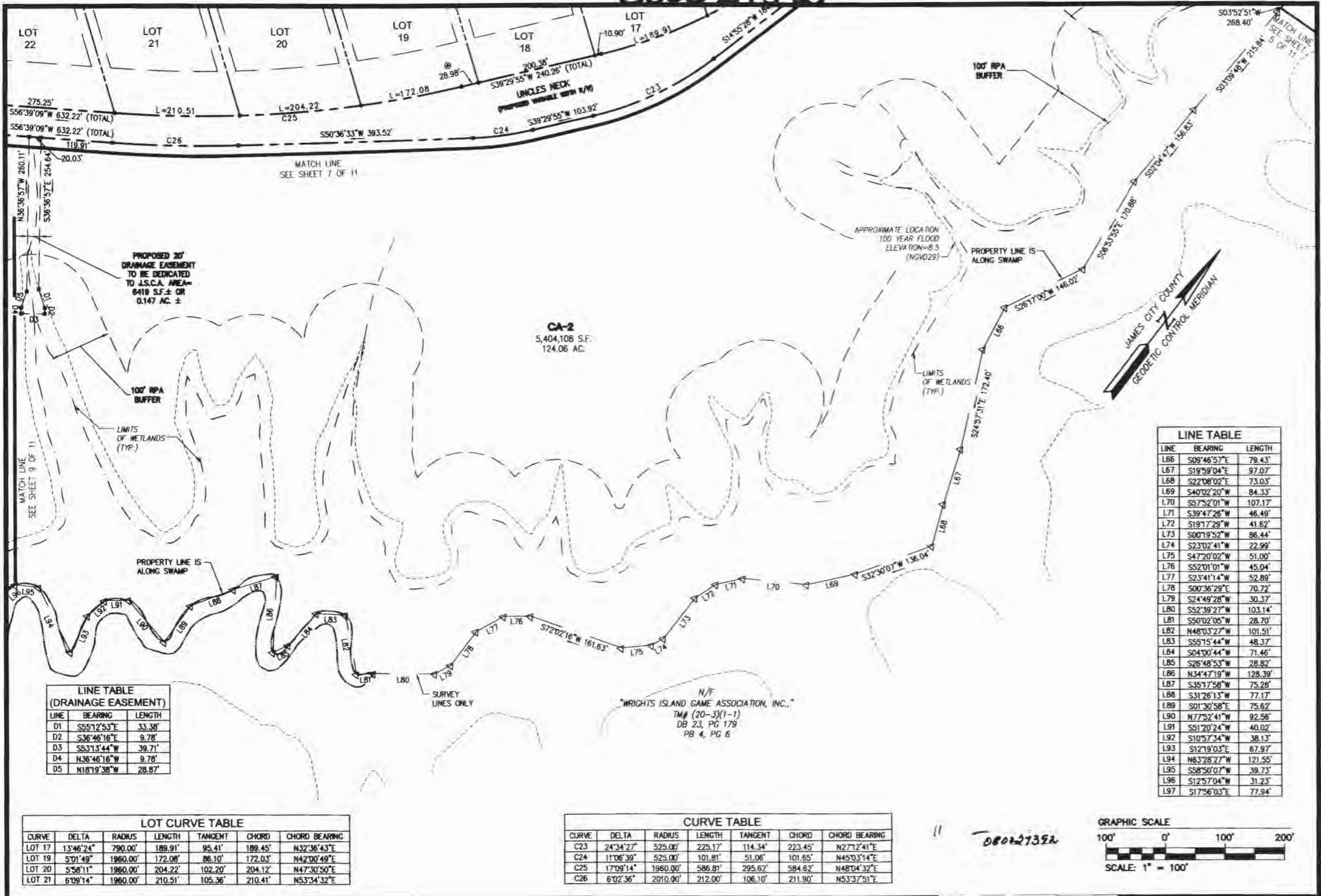


0800 27392



LINE TABLE (DRAINAGE EASEMENT)

LINE	BEARING	LENGTH
D1	S55°12'53"E	33.38'
D2	S36°46'16"E	9.78'
D3	S53°13'44"W	39.71'
D4	N36°46'16"W	9.78'
D5	N18°19'38"W	28.87'

LINE TABLE

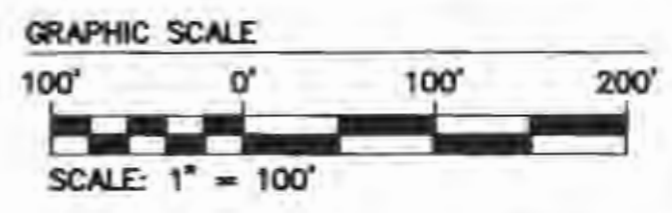
LINE	BEARING	LENGTH
L66	S09°46'57"E	79.43'
L67	S19°59'04"E	97.07'
L68	S22°08'02"E	73.03'
L69	S40°02'20"W	84.33'
L70	S57°52'01"W	107.17'
L71	S39°47'26"W	46.49'
L72	S19°17'29"W	41.62'
L73	S00°19'52"W	86.44'
L74	S23°02'41"W	22.99'
L75	S47°20'02"W	51.00'
L76	S52°01'01"W	45.04'
L77	S23°41'14"W	52.89'
L78	S00°36'29"E	70.72'
L79	S24°49'28"W	30.37'
L80	S52°39'27"W	103.14'
L81	S50°02'05"W	28.70'
L82	N48°03'27"W	101.51'
L83	S55°15'44"W	48.37'
L84	S04°00'44"W	71.46'
L85	S26°48'53"W	28.82'
L86	N34°47'19"W	128.39'
L87	S35°17'58"W	75.28'
L88	S31°26'13"W	77.17'
L89	S01°30'58"E	75.62'
L90	N77°52'41"W	92.56'
L91	S51°20'24"W	40.02'
L92	S10°57'34"W	38.13'
L93	S12°19'03"E	67.97'
L94	N63°28'27"W	121.55'
L95	S58°50'07"W	39.73'
L96	S12°57'04"W	31.23'
L97	S17°56'03"E	77.94'

LOT CURVE TABLE

CURVE	DELTA	RADIUS	LENGTH	TANGENT	CHORD	CHORD BEARING
LOT 17	13°46'24"	790.00'	189.91'	95.41'	189.45'	N32°36'43"E
LOT 19	5°01'49"	1960.00'	172.08'	86.10'	172.03'	N42°00'49"E
LOT 20	5°58'11"	1960.00'	204.22'	102.20'	204.12'	N47°30'50"E
LOT 21	6°09'14"	1960.00'	210.51'	105.36'	210.41'	N53°34'32"E

CURVE TABLE

CURVE	DELTA	RADIUS	LENGTH	TANGENT	CHORD	CHORD BEARING
C23	24°34'27"	525.00'	225.17'	114.34'	223.45'	N27°12'41"E
C24	11°06'39"	525.00'	101.81'	51.06'	101.65'	N45°03'14"E
C25	17°09'14"	1960.00'	586.81'	295.62'	584.62'	N48°04'32"E
C26	6°02'36"	2010.00'	212.00'	106.10'	211.90'	N53°37'51"E



5248 Olde Towne Road, Suite 1
 Williamsburg, Virginia 23188
 (757) 253-0040
 Fax (757) 220-8994

PLAT OF SUBDIVISION
**RIVER'S BEND @
 UNCLES NECK**
 STONEHOUSE DISTRICT JAMES CITY COUNTY VIRGINIA



City of Williamsburg & County of James City Circuit Court. This PLAT was recorded on <u>12/27</u> at <u>10:27</u> AM/PM, PG <u>1</u> DOCUMENT # <u>080027392</u> BETSY B. WOOLRIDGE, CLERK				
Clerk <u>Betsy Woolridge</u>				
1 03/14/08	REVISED PER COUNTY COMMENTS DATED 02/08			
No.	DATE	REVISION / COMMENT / NOTE	REVISED BY	JAG.

Designed JAG	Drawn RLS
Scale 1"=100'	Date 09/27/07
Project No. 9737-01	
Drawing No. 6 OF 11	