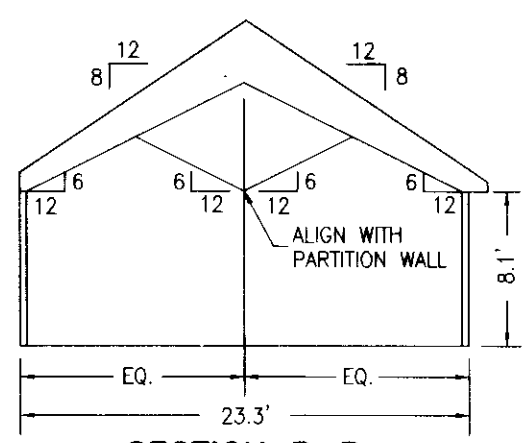
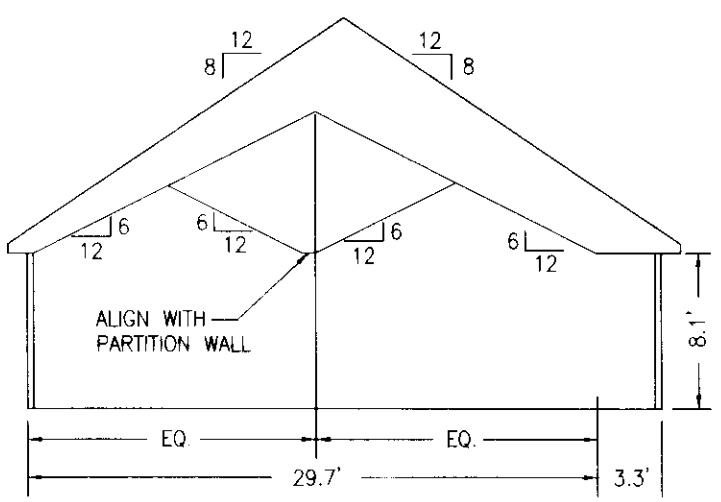


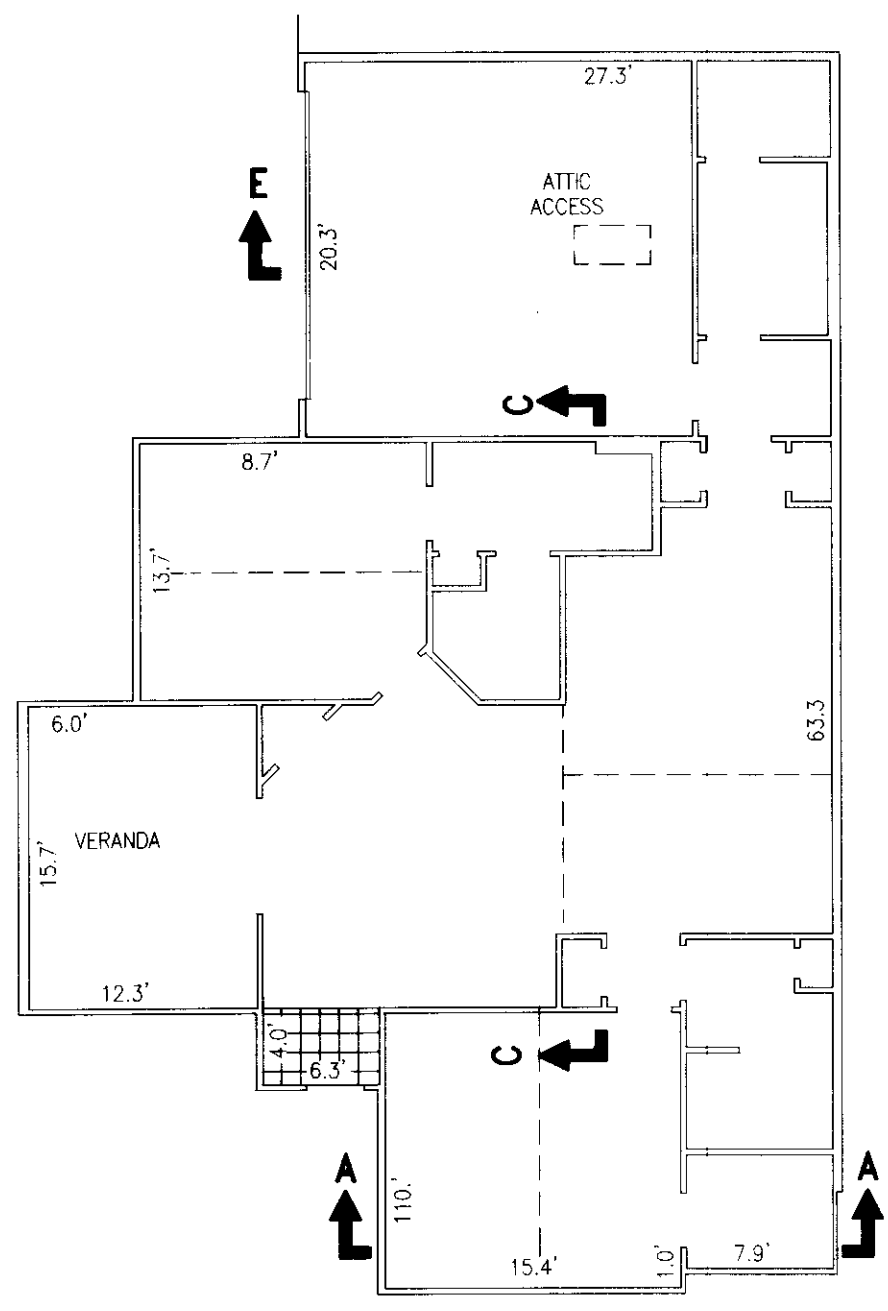
SECTION A-A



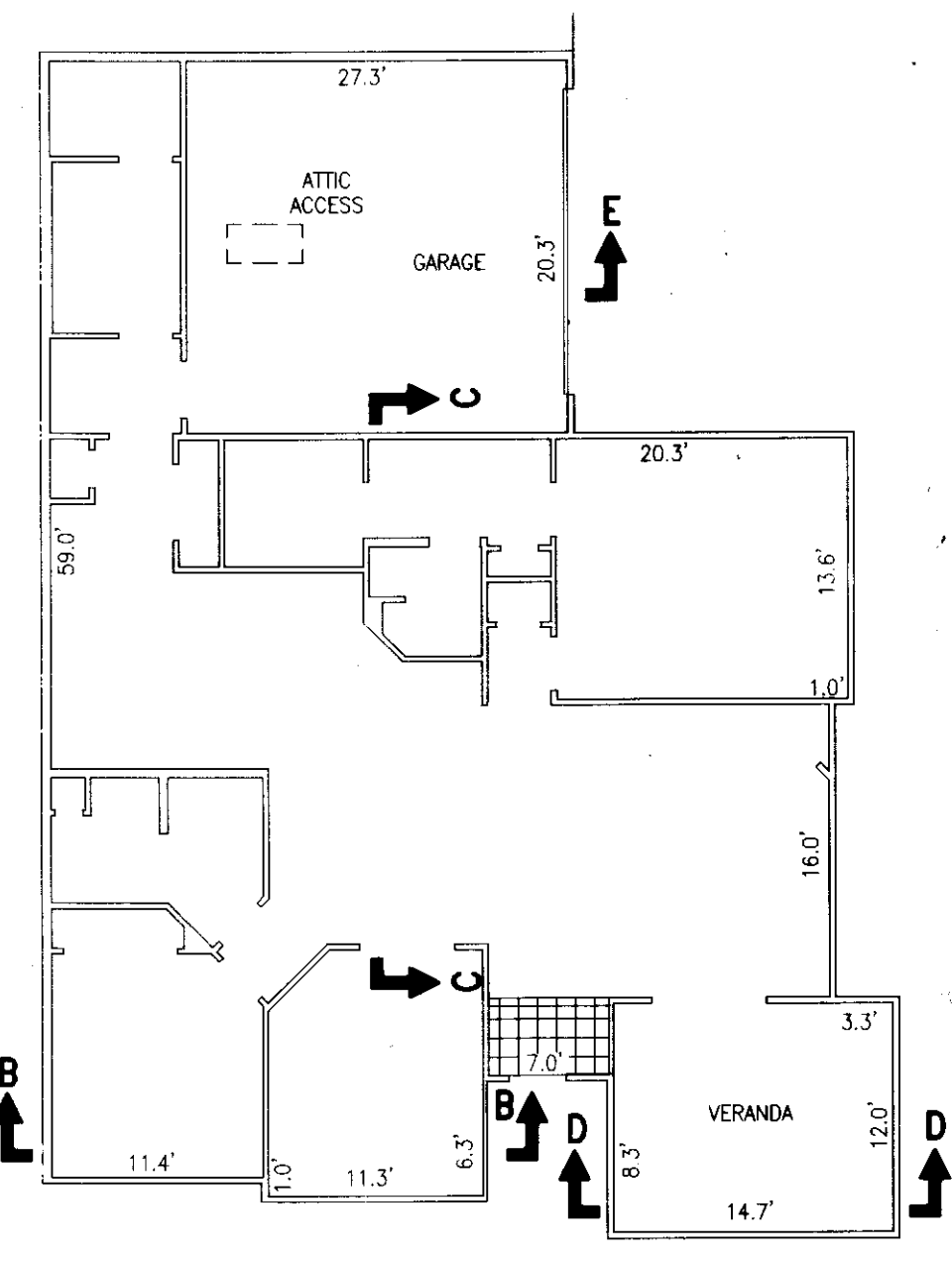
SECTION B-B



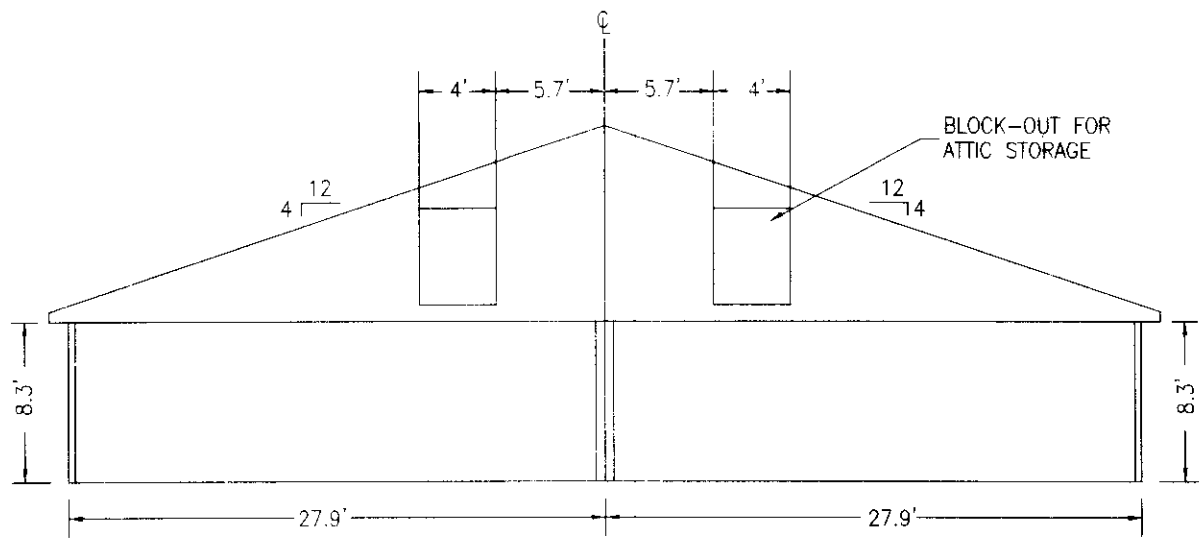
SECTION C-C



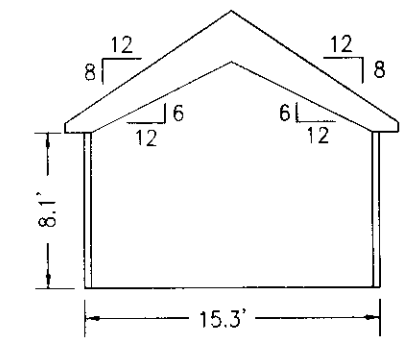
BUILDING 19-B, 20-B & 20-C
ABBNEY
FLOOR PLAN



BUILDING 19-A, 19-C & 19-D, 20-A & 20-D
CANTERBURY
FLOOR PLAN



SECTION E-E



SECTION D-D

I CERTIFY THAT THESE PLANS ARE ACCURATE AND COMPLIES WITH THE PROVISIONS OF SECTION 55-79.58(b) OF THE CODE OF VIRGINIA OF 1950 AS AMENDED AND ALL UNITS SHOWN HEREON HAVE BEEN SUBSTANTIALLY COMPLETED.

3 Large/Small Plat(s) Recorded herewith as # 080025236

STATE OF VIRGINIA
JAMES CITY COUNTY

IN THE CLERK'S OFFICE OF THE CIRCUIT COURT FOR JAMES CITY COUNTY, VIRGINIA. THIS MAP WAS PRESENTED AND ADMITTED TO RECORD AS THE LAW DIRECTS THIS 14th DAY OF October, 2008 AT 12:27 AM/PM.

INSTRUMENT # 080025236
TESTES: Betsy B. Woolridge, Clerk
TESTES: by Claudia H. Brinkholz, Dep Clerk

Brian J. Lavin 002490
NAM REGISTRATION NO.

SEPTEMBER 3, 2008
DATE



<p>EXHIBIT "D" PLANS OF VILLAS AT FIVE FORKS A CONDOMINIUM PHASE 4 JAMES CITY COUNTY, VIRGINIA</p>		<p>ART-RAY CORP. ENGINEERING SURVEYING 1500 BREEZEPORT WAY, SUITE 400 SUFFOLK, VIRGINIA 23435 Office: 757.686.3345 Fax: 757.686.3348</p>	
<p>REF: DOC.#080020726</p>		<p>3 SHEET: 3 of 3</p>	

6:\2280.0-07_prelim.plt\dwg\phase 4.dwg