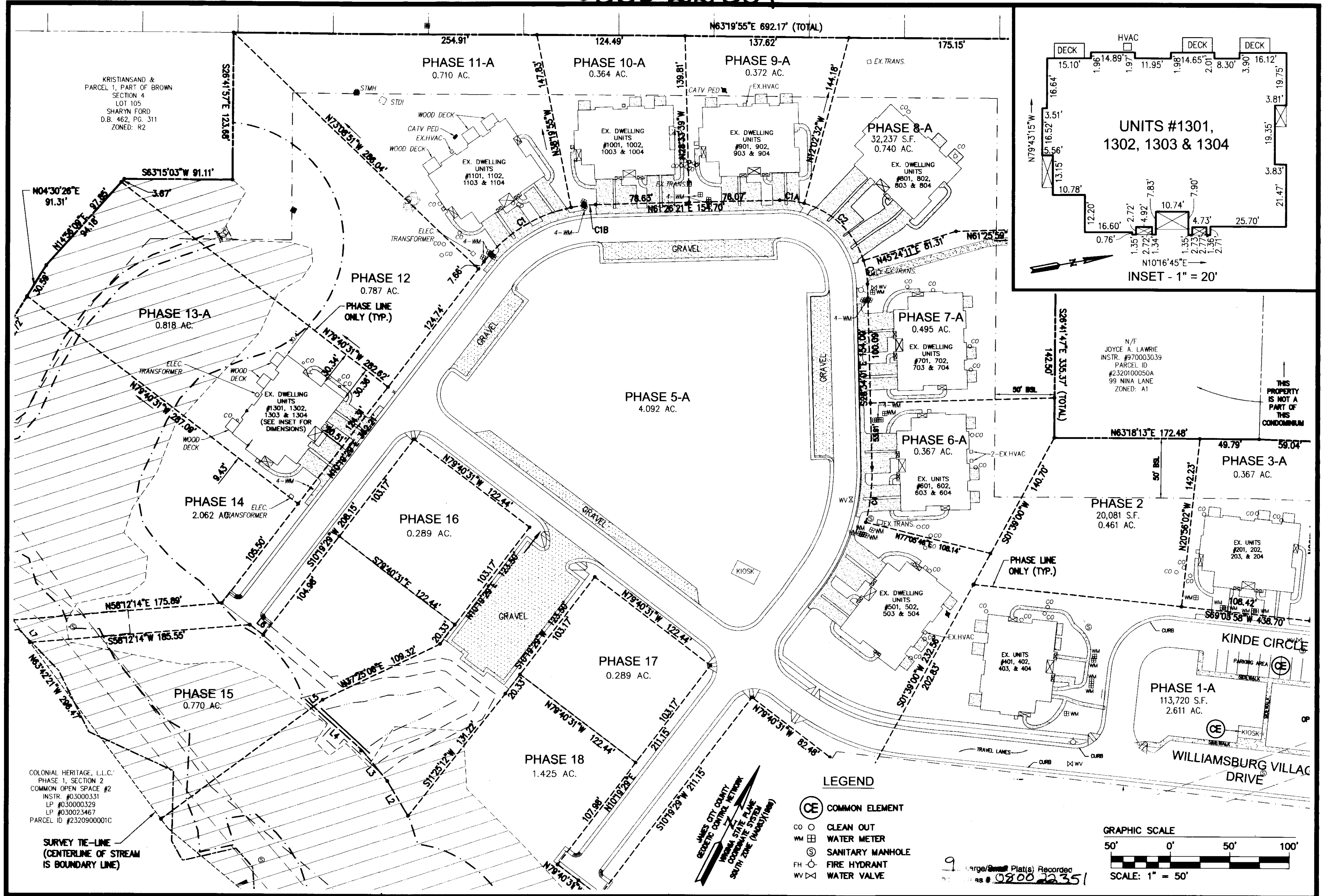
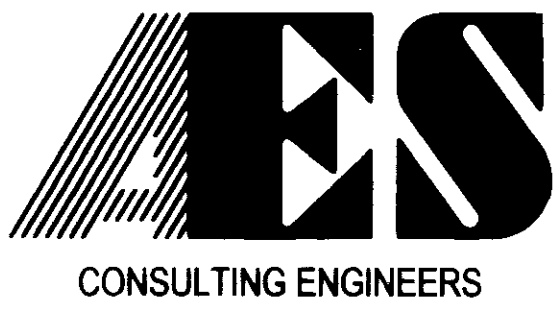


080022351



S:\Jobs\928602\Norge Condo Plat\dwg\Plat\Record\Phase 13\Final Condo Plat Ph 13-A\928602Condo Phase 13A SH 02.dwg, 8/28/2008 3:52:31 PM, Tony Taylor



5248 Olde Towne Road, Suite 1  
Williamsburg, Virginia 23188  
(757) 253-0040  
Fax (757) 220-8994

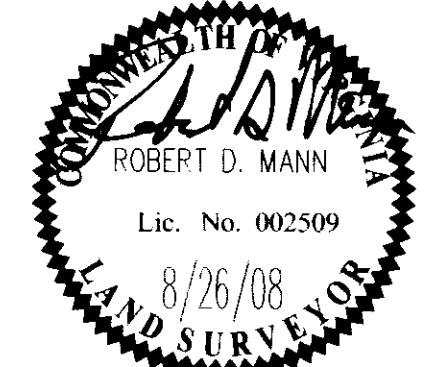
WILLIAMSBURG • RICHMOND • GLOUCESTER • FREDERICKSBURG

"EXHIBIT 1"

PLAT OF CONDOMINIUM

**WILLIAMSBURG VILLAGE AT NORGE CONDOMINIUM**  
PHASE 13-A  
UNITS #1301, 1302, 1303, AND 1304

STONEHOUSE DISTRICT    COUNTY OF JAMES CITY    VIRGINIA



No.	DATE	REVISION / COMMENT / NOTE	BY

City of Williamsburg & County of James City  
Circuit Court: This PLAT was recorded on  
9-5-2008  
at 10:45 AM/PM PB PG  
DOCUMENT # 080022351  
BETSY B. WOOLRIDGE, CLERK  
*Betsy Woolridge* Clerk

Designed VMB/JAG	Drawn AWT
Scale 1"=50'	Date 8/26/08
Project No. 9286-2	
Drawing No. 2 of 9	