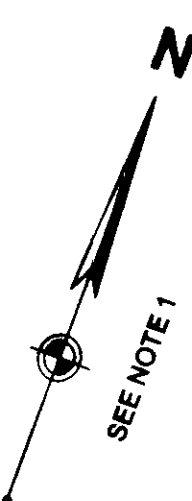


080016

PRIVATE RIGHT-OF-WAY LINE TABLE

LINE	BEARING	LENGTH
RL1	S 20°15'42" E	3.50'
RL2	S 69°44'18" W	18.32'
RL3	S 20°15'42" E	28.66'
RL4	S 20°15'42" E	8.00'
RL5	S 20°15'42" E	24.54'
RL6	S 69°44'18" W	3.50'
RL7	N 24°44'18" E	22.63'
RL8	N 20°15'42" W	4.22'
RL9	S 69°44'18" W	0.50'
RL10	N 69°44'18" E	0.50'
RL11	N 20°15'42" W	4.30'

NOTE:
SEE SHEET 3 OF 3 FOR LOT 1 THROUGH LOT 53 DATA.



PRIVATE RIGHT-OF-WAY TIE LINE TABLE

LINE	BEARING	LENGTH
RTL1	N 20°15'42" W	34.00'
RTL2	N 69°44'18" E	64.02'
RTL3	S 86°46'49" W	42.65'
RTL4	N 52°41'31" E	42.65'
RTL5	N 20°15'42" W	32.16'
RTL6	S 20°15'42" W	33.04'

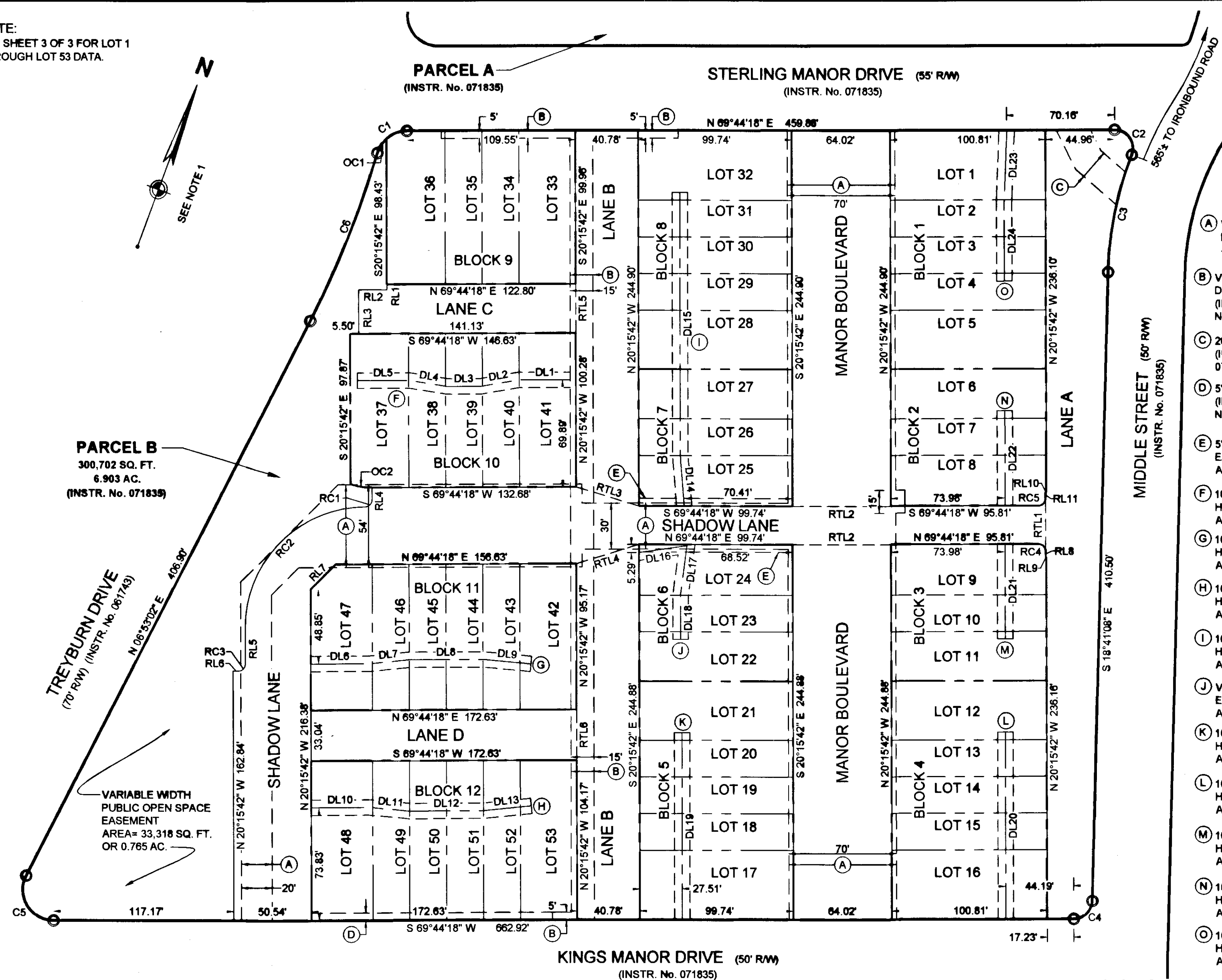
DRAINAGE ESMT LINE TABLE

LINE	BEARING	LENGTH
DL1	S 69°44'18" W	33.52'
DL2	S 60°23'15" W	24.93'
DL3	S 69°44'18" W	21.89'
DL4	S 79°05'21" W	24.93'
DL5	S 69°44'18" W	33.75'
DL6	N 69°44'18" E	37.79'
DL7	N 64°15'05" E	26.22'
DL8	N 69°44'18" E	47.79'
DL9	N 75°10'31" E	31.21'
DL10	N 69°44'18" E	37.80'
DL11	N 75°12'40" E	26.22'
DL12	N 69°44'18" E	47.79'
DL13	N 64°15'56" E	31.22'
DL14	N 24°25'58" W	33.20'
DL15	N 20°15'42" W	171.33'
DL16	S 61°34'03" W	30.99'
DL17	S 12°41'34" E	33.32'
DL18	S 20°15'42" E	28.96'
DL19	N 20°15'42" W	122.12'
DL20	S 20°15'42" E	122.12'
DL21	N 20°15'42" W	61.98'
DL22	S 20°15'42" E	62.00'
DL23	N 18°06'11" W	45.49'
DL24	N 20°15'42" W	52.81'

PARCEL B
300,702 SQ. FT.
6.903 AC.
(INSTR. No. 071835)

TREYBURN DRIVE
(70' RW)
(INSTR. No. 061743)
N 06°33'02" E 406.90'

VARIABLE WIDTH PUBLIC OPEN SPACE EASEMENT
AREA= 33,318 SQ. FT.
OR 0.765 AC.



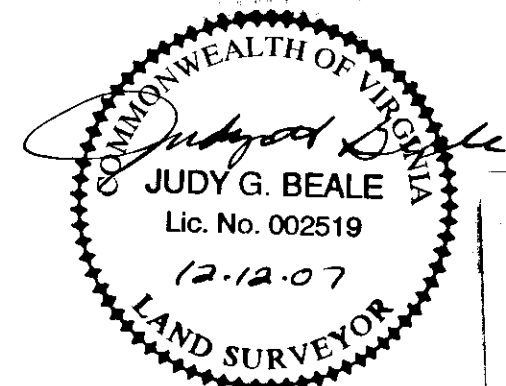
- PARCEL F**
(INSTR. No. 071835)
- PARCEL G-1**
(INSTR. No. 071835)
- (A) VARIABLE WIDTH PUBLIC UTILITY EASEMENT (INSTR. No. 071835 - PLAT & INSTR. No. 071837 - DEED)
 - (B) VARIABLE WIDTH PRIVATE DRAINAGE EASEMENT. (INSTR. No. 071835 - PLAT & INSTR. No. 071837 - DEED)
 - (C) 20' PRIVATE DRAINAGE EASEMENT. (INSTR. No. 071835 - PLAT & INSTR. No. 071837 - DEED)
 - (D) 5' WATER LINE EASEMENT (INSTR. No. 071837 - PLAT & INSTR. No. 071837 - DEED)
 - (E) 5' PRIVATE PEDESTRIAN ACCESS EASEMENT HEREBY ESTABLISHED. AREA= 499 SQ. FT. OR 0.011 AC.
 - (F) 10' PRIVATE DRAINAGE EASEMENT HEREBY ESTABLISHED. AREA= 1,390 SQ. FT. OR 0.032 AC.
 - (G) 10' PRIVATE DRAINAGE EASEMENT HEREBY ESTABLISHED. AREA= 1,430 SQ. FT. OR 0.033 AC.
 - (H) 10' PRIVATE DRAINAGE EASEMENT HEREBY ESTABLISHED. AREA= 1,430 SQ. FT. OR 0.033 AC.
 - (I) 10' PRIVATE DRAINAGE EASEMENT HEREBY ESTABLISHED. AREA= 2,045 SQ. FT. OR 0.047 AC.
 - (J) VAR. WIDTH PRIVATE DRAINAGE EASEMENT HEREBY ESTABLISHED. AREA= 841 SQ. FT. OR 0.019 AC.
 - (K) 10' PRIVATE DRAINAGE EASEMENT HEREBY ESTABLISHED. AREA= 1,221 SQ. FT. OR 0.028 AC.
 - (L) 10' PRIVATE DRAINAGE EASEMENT HEREBY ESTABLISHED. AREA= 1,221 SQ. FT. OR 0.028 AC.
 - (M) 10' PRIVATE DRAINAGE EASEMENT HEREBY ESTABLISHED. AREA= 620 SQ. FT. OR 0.014 AC.
 - (N) 10' PRIVATE DRAINAGE EASEMENT HEREBY ESTABLISHED. AREA= 620 SQ. FT. OR 0.014 AC.
 - (O) 10' PRIVATE DRAINAGE EASEMENT HEREBY ESTABLISHED. AREA= 985 SQ. FT. OR 0.023 AC.

PRIVATE RIGHT-OF-WAY CURVE TABLE

CURVE	RADIUS	LENGTH	DELTA	CHORD	CH BEARING
RC1	4.50	7.07	90°00'00"	6.36'	N 24°44'18" E
RC2	78.00	122.52	90°00'00"	110.31'	S 24°44'18" W
RC3	4.50	7.07	90°00'00"	6.36'	N 24°44'18" E
RC4	4.50	7.07	90°00'00"	6.36'	N 65°15'42" W
RC5	4.50	7.07	90°00'00"	6.36'	N 24°44'18" E

OPEN SPACE ESMT CURVE TABLE

CURVE	RADIUS	LENGTH	DELTA	CHORD	CH BEARING
OC1	20.00	11.16'	31°58'04"	11.01'	N 12°13'57" E
OC2	38.53	14.24'	21°11'00"	14.16'	N 79°30'32" E



City of Williamsburg & County of James City Circuit Court. This PLAT was recorded on 3 January 2008 at 2:58 PM, PG. 1 DOCUMENT # 080016 BETSY B. WOOLRIDGE, CLERK

VIRGINIA
IN THE CLERK'S OFFICE OF THE CIRCUIT COURT OF THE CITY OF WILLIAMSBURG, VIRGINIA ON THIS 3 DAY OF Jan, 2008, THIS PLAT WAS RECEIVED AND ADMITTED TO RECORD IN MAP BOOK --- AT PAGE --- AT
TESTE: Betsy B. Woolridge CLERK

SEE SHEET 3 OF 3 FOR TOWNHOUSE LOTS
SEE SHEET 1 OF 3 FOR NOTES & CERTIFICATIONS

LEGEND

- IP(S) IRON PIN TO BE SET
- IP(F) IRON PIN FOUND
- NAIL(S) NAIL TO BE SET
- NAIL(F) NAIL FOUND
- PIPE(F) IRON PIPE FOUND

SUBDIVISION OF **PARCEL B** PROPERTY OF **TOWNHOMES AT TREYBURN PHASE I, LLC** (INSTR. No. 061836, INSTR. No. 071835) WILLIAMSBURG, VIRGINIA

DES. N/A JOB NO. 62896.01
DRN. RDA SCALE 1"=50'
CKD. JGB DATE 7-06-05

WOOLPERT, INC.
415 PORT CENTRE PARKWAY SUITE 101 PORTSMOUTH, VA 23704-4924
TEL: 757.399.6882 FAX: 757.399.6869

SHEET NO. 2 OF 3
FILE NO. Twnhse plat.dwg

REV. 06-03-07 PER CITY COMMENTS
REV. 07-29-07 PER CITY COMMENTS
REV. 06-04-07 PER CLIENT COMMENTS
REV. 12-20-05 PER CLIENT COMMENTS

