

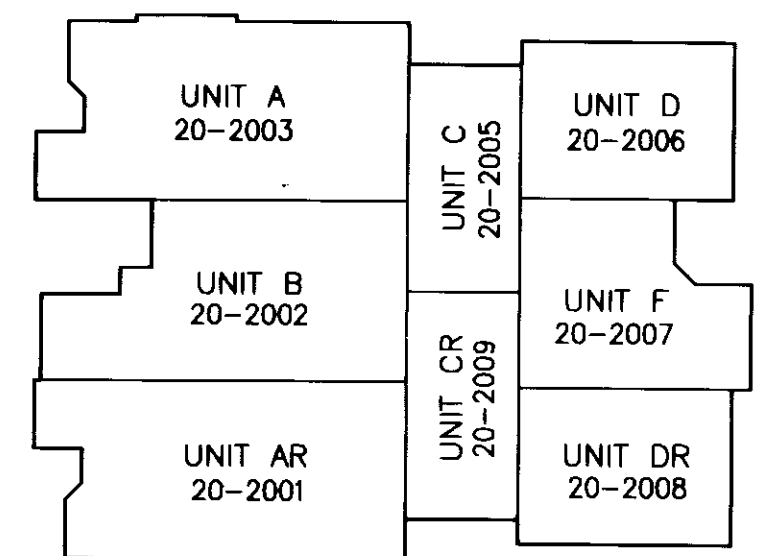
080015496

NO.	DIRECTION	DISTANCE
L41	N 73°04'23" E	140.60'
L42	N 62°15'31" W	21.56'

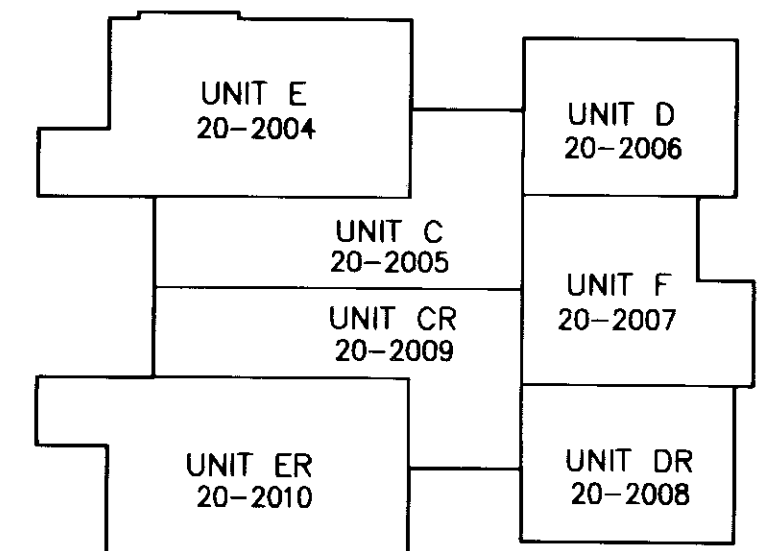
NUMBER	DELTA	CHORD BEARING	TANGENT	RADIUS	ARC	CHORD
C36	20°41'04"	N 83°24'55" E	57.76	316.50	114.26	113.64
C37	13°14'21"	N 49°24'03" E	36.73	316.50	73.13	72.97
C38	14°54'43"	N 35°19'31" E	41.42	316.50	82.37	82.14

AREA TABULATIONS

TOTAL AREA ENCOMPASSED BY THIS CONDOMINIUM PLAT: 39.9215 AC.
 EX. PHASES: = 16.9618 ACRES (PREVIOUSLY SUBMITTED)
 PHASE 21: = 1.7783 ACRES (THIS SUBMITTAL)
 TOTAL ACREAGE OF ADDITIONAL LAND = 21.1814 ACRES



BUILDING #20 - 1ST FLOOR
N.T.S.



BUILDING #20 - 2ND FLOOR
N.T.S.

UNIT NUMBER	BUILDING NUMBER	MODEL	STREET ADDRESS
20-2001	20	AR	2001 DUNTRUNE GLEN
20-2002	20	B	2002 DUNTRUNE GLEN
20-2003	20	A	2003 DUNTRUNE GLEN
20-2004	20	E	2004 DUNTRUNE GLEN
20-2005	20	C	2005 DUNTRUNE GLEN
20-2006	20	D	2006 DUNTRUNE GLEN
20-2007	20	F	2007 DUNTRUNE GLEN
20-2008	20	DR	2008 DUNTRUNE GLEN
20-2009	20	CR	2009 DUNTRUNE GLEN
20-2010	20	ER	2010 DUNTRUNE GLEN

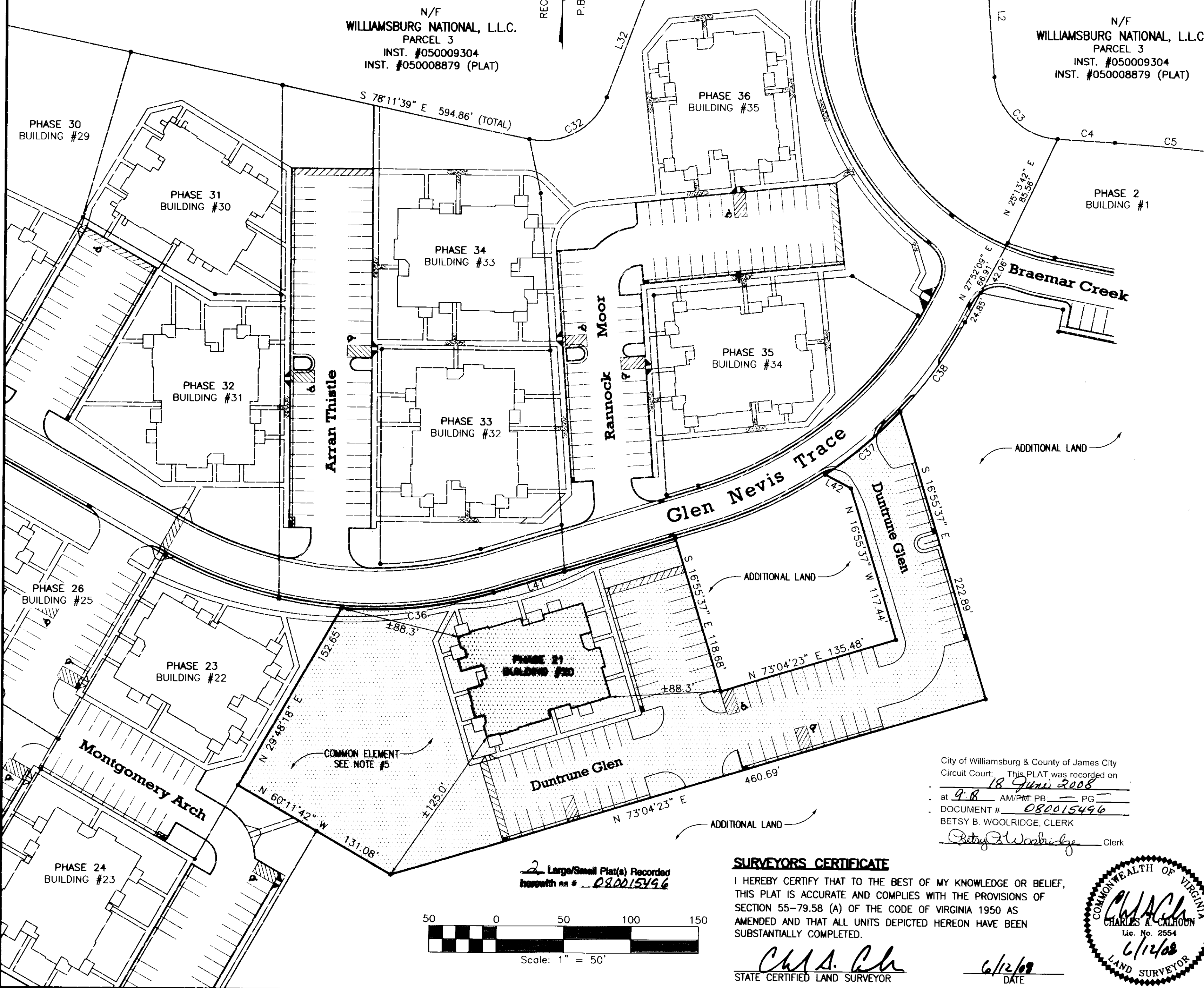
PLAT OF
 PHASE 21
BRAEMAR CREEK
 AT GREENSPRINGS PLANTATION
 A CONDOMINIUM

LOCATED IN THE BERKELEY DISTRICT
 JAMES CITY COUNTY, VIRGINIA

DATE: 6/12/08 SCALE: 1" = 50' JOB# 05-548-21
 SHEET 2 OF 2

LandTech
 Resources, Inc.
 Surveying • Engineering • GPS

205-E Bulifants Boulevard, Williamsburg, VA 23188
 Phone: (757) 565-1677 Fax: (757) 565-0782
 web: landtechresources.com



City of Williamsburg & County of James City
 Circuit Court: This PLAT was recorded on
 18 June 2008
 at 9:18 AM/P.M. PB PG
 DOCUMENT # 080015496
 BETSY B. WOOLRIDGE, CLERK
 Betsy B. Woolridge Clerk

SURVEYORS CERTIFICATE

I HEREBY CERTIFY THAT TO THE BEST OF MY KNOWLEDGE OR BELIEF, THIS PLAT IS ACCURATE AND COMPLIES WITH THE PROVISIONS OF SECTION 55-79.58 (A) OF THE CODE OF VIRGINIA 1950 AS AMENDED AND THAT ALL UNITS DEPICTED HEREON HAVE BEEN SUBSTANTIALLY COMPLETED.

STATE CERTIFIED LAND SURVEYOR

