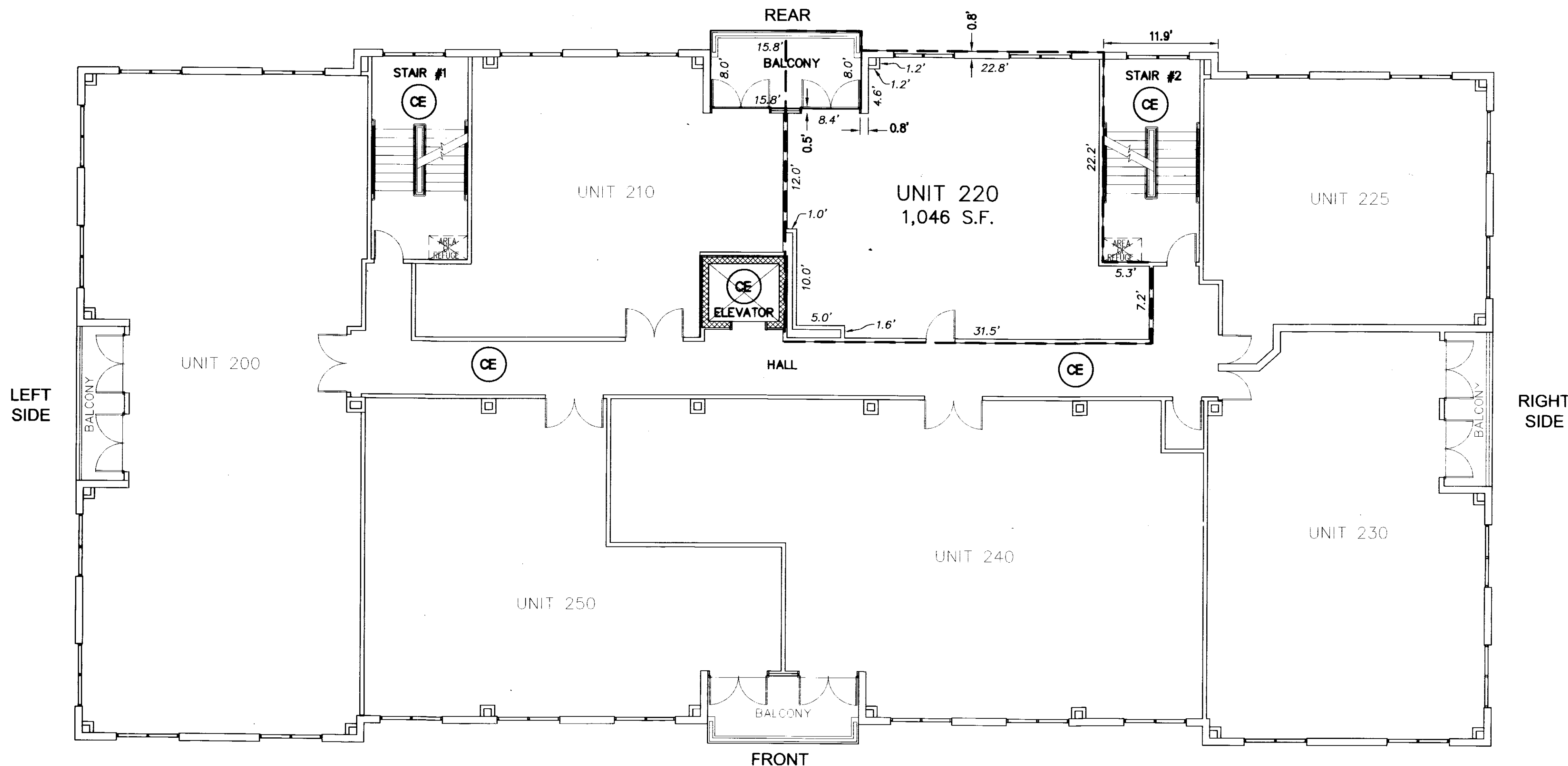
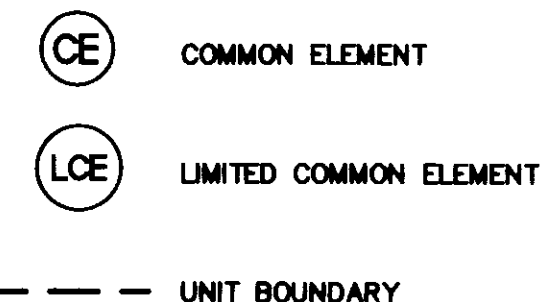


080012280

NOTES:

1. COMMON ELEMENTS, LIMITED COMMON ELEMENTS AND UNITS ARE SUBSTANTIALLY COMPLETE.
2. ALL BUILDING FLOOR PLANS AND DETAILS SHOWN ARE PER ARCHITECTURAL PLANS PROVIDED TO AES CONSULTING ENGINEERS BY THE DEVELOPER.
3. THE LOWER (HORIZONTAL) BOUNDARY OF EACH UNIT AS SHOWN IN THE PLAN IS THE HORIZONTAL PLANE OF THE UPPER SURFACE OF THE CONCRETE FLOOR SLAB.
4. THE UPPER (HORIZONTAL) BOUNDARY IS THE PLANE OF THE LOWER SURFACE OF THE SUSPENDED ACOUSTIC CEILING OF THE UNIT.
5. THE VERTICAL (SIDE) BOUNDARIES OF THE UNIT SHALL BE THE VERTICAL PLANE OF THE CENTERLINE OF THE INTERIOR WALL DIVIDING ANY TWO UNITS AND/OR THE OUTSIDE FACE OF THE EXTERIOR WALL OF THE PERIMETER UNIT, EXTENDED TO INTERSECTIONS WITH EACH OTHER AND WITH THE UPPER AND LOWER UNIT BOUNDARIES.
6. LOWER, UPPER AND SIDE BOUNDARIES ARE MORE FULLY DESCRIBED IN THE DECLARATION OF CONDOMINIUM.
7. THE INTERIOR WALLS AND ELEMENTS AS SHOWN HEREON WERE TAKEN DIRECTLY FROM ARCHITECTURAL DRAWINGS PROVIDED BY THE DEVELOPER AND ARE INTENDED FOR REFERENCE PURPOSES ONLY. INTERIOR PARTITION WALLS AND ELEMENTS HAVE NOT BEEN FIELD VERIFIED AND ARE NOT SHOWN.

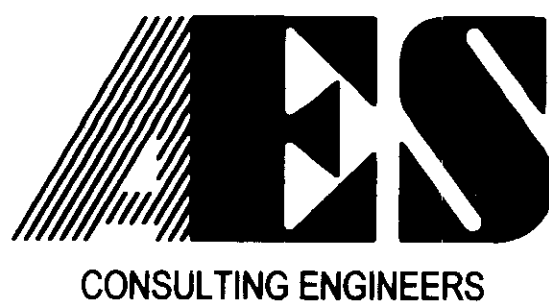


SECOND FLOOR PLAN

NOT TO SCALE

5 Original Small Plat(s) Recorded herewith as # 080012280

S:\Jobs\6632\663215D-VentureEast\dwg\SunPlat\Phase 06 Unit 220\6632615D Condo Unit 220 02 2nd FLOOR PLAN.dwg, 4/22/2008 3:02:33 PM, Tony Taylor

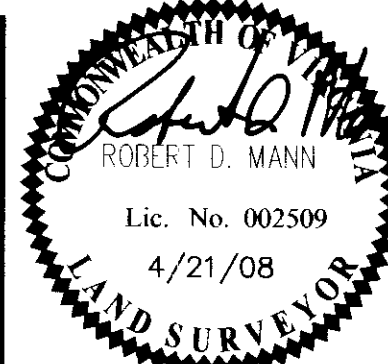


5248 Olde Towne Road, Suite 1  
Williamsburg, Virginia 23188  
(757) 253-0040  
Fax (757) 220-8994

WILLIAMSBURG • RICHMOND • GLOUCESTER • FREDERICKSBURG

"EXHIBIT 1"

PLAN OF CONDOMINIUM  
**PATRIOT PARK, A CONDOMINIUM**  
PHASE 6, UNIT 220  
OWNER/DEVELOPER: PATRIOT DEVELOPMENT ASSOCIATES, LLC  
BERKELEY DISTRICT JAMES CITY COUNTY VIRGINIA



No.	DATE	REVISION / COMMENT / NOTE	REVISED BY	REVIEWED BY

City of Williamsburg & County of James City  
Circuit Court: This PLAT was recorded on  
at 1:09 PM on 12 May 2008  
DOCUMENT # 080012280  
BETSY B. WOOLRIDGE, CLERK  
Betsy B. Woolridge Clerk

Designed AES	Drawn AWT
Scale NTS	Date 4/21/08
Project No. 6632-6-15D	
Drawing No. 2 of 5	