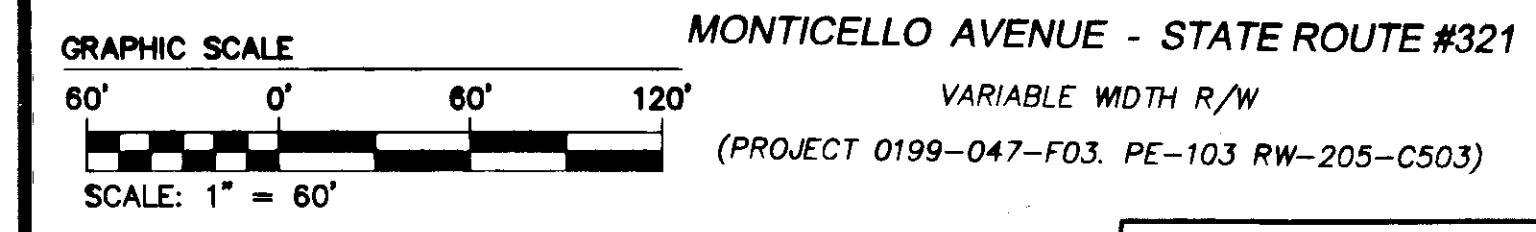
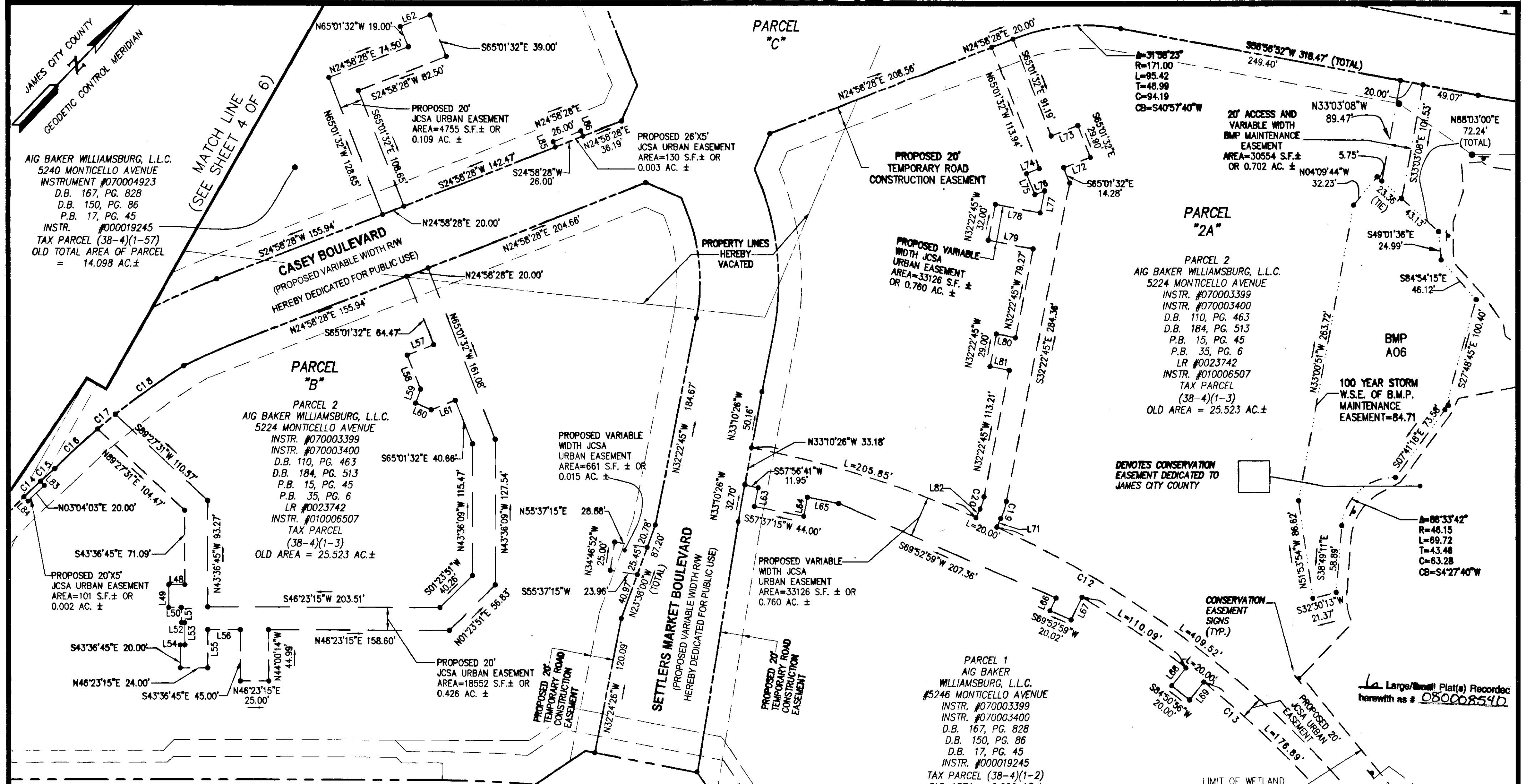
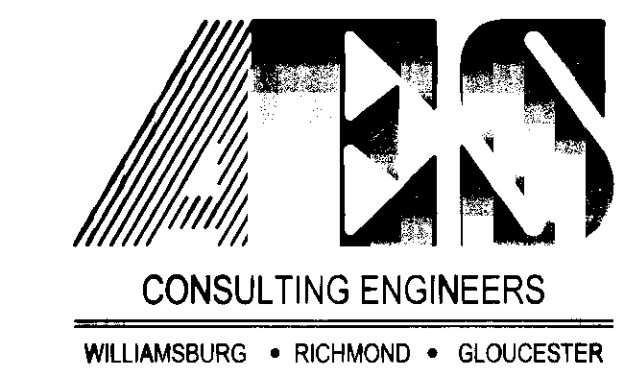


08000 8540



CURVE TABLE						
CURVE	DELTA	RADIUS	LENGTH	TANGENT	CHORD	CHORD BEARING
C12	39°34'52"	919.73'	635.37'	330.95'	622.81'	S76°56'21"W
C13	19°32'55"	899.73'	306.99'	155.00'	305.50'	S86°57'22"W
C14	1°52'36"	610.64'	20.00'	10.00'	20.00'	S03°04'03"W
C15	1°33'07"	610.68'	16.54'	8.27'	16.54'	S04°46'53"W
C16	4°43'24"	621.32'	51.22'	25.62'	51.21'	S03°31'09"W
C17	1°51'35"	621.32'	20.17'	10.08'	20.17'	S06°48'38"W
C18	6°46'58"	621.32'	73.55'	36.82'	73.51'	S11°07'55"W
C19	13°25'28"	67.50'	15.82'	7.94'	15.78'	N25°40'01"W
C20	13°25'28"	47.50'	11.13'	5.59'	11.10'	N25°40'01"W

LINE TABLE											
LINE	BEARING	LENGTH	LINE	BEARING	LENGTH	LINE	BEARING	LENGTH	LINE	BEARING	LENGTH
L48	S46°23'15"W	14.00'	L58	S65°01'32"E	32.00'	L68	S05°10'16"E	19.97'	L78	S57°37'15"W	40.00'
L49	S43°36'45"E	20.00'	L59	S22°59'34"E	13.00'	L69	N05°10'16"W	19.98'	L79	N57°37'15"E	40.00'
L50	N46°23'15"E	11.00'	L60	N69°27'45"E	15.00'	L70	N07°17'52"E	20.00'	L80	S57°37'15"W	17.00'
L51	S43°36'45"E	13.48'	L61	N24°58'28"E	23.00'	L71	N18°57'15"W	8.35'	L81	N57°37'15"E	17.00'
L52	N46°23'15"E	3.00'	L62	N24°58'28"E	28.00'	L72	N24°58'28"E	25.00'	L82	S18°57'17"E	8.50'
L53	S43°36'45"E	19.50'	L63	S32°02'08"E	16.68'	L73	S24°58'28"W	25.00'	L83	N86°55'57"W	5.00'
L54	S46°23'15"W	4.00'	L64	N32°22'45"W	17.00'	L74	S24°58'28"W	12.00'	L84	S86°55'57"E	5.00'
L55	N43°36'45"W	33.50'	L65	N57°37'15"E	27.90'	L75	S65°01'32"E	20.00'	L85	N65°01'42"W	5.00'
L56	N46°23'15"E	28.50'	L66	S17°47'12"E	12.37'	L76	N24°58'28"E	9.16'	L86	S65°01'42"E	5.00'
L57	S24°58'28"W	25.00'	L67	N17°47'12"W	22.00'	L77	S32°22'45"E	19.76'			



5248 Olde Towne Road, Suite 1
Williamsburg, Virginia 23188
(757) 253-0040
Fax (757) 220-8994

PLAT OF SUBDIVISION, BOUNDARY LINE ADJUSTMENT, AND PROPERTY LINE EXTINGUISHMENT OF THE PROPERTIES OWNED BY AIG BAKER WILLIAMSBURG, L.L.C. AND SETTLERS MARKET DEVELOPERS, LLC NEW TOWN, SECTION 9 "SETTLER'S MARKET AT NEW TOWN"
COUNTY OF JAMES CITY BERKELEY DISTRICT VIRGINIA



at 2:21 PM, PG	
DOCUMENT # 080008540	
BETSY B. WOOLRIDGE, CLERK	
<i>Betsy B. Woolridge</i> Clerk	
3. 01/28/08 REVISED PER FINAL J.C.S.A. COMMENTS 01-28-08	RWS
2. 11/15/07 REVISED PER J.C.S.A. COMMENTS 10-05-07	RLS
1. 9/5/07 REVISED PER J.C.S.A. COMMENTS 8-31-07	RLS
No. DATE REVISION / COMMENT / NOTE	REVISOR

Designed AES	Drawn RLS
Scale 1"=60'	Date 07/10/07
Project No. 6632-09-01C	
Drawing No. 5 OF 6	
URBAN EASEMENTS AND BMP A06	

N/F LANGLEY FEDERAL CREDIT UNION
#5220 MONTICELLO AVENUE
INSTR. #050020281
TAX PARCEL (38-4)(1-55)
City of Williamsburg & County of James City
Circuit Court: This PLAT was recorded on 3-27-2008
EXISTING 20' JCSA URBAN EASEMENT INSTR. #060020214

Large/Small Plat(s) Recorded herewith as # 080008540