

080008540

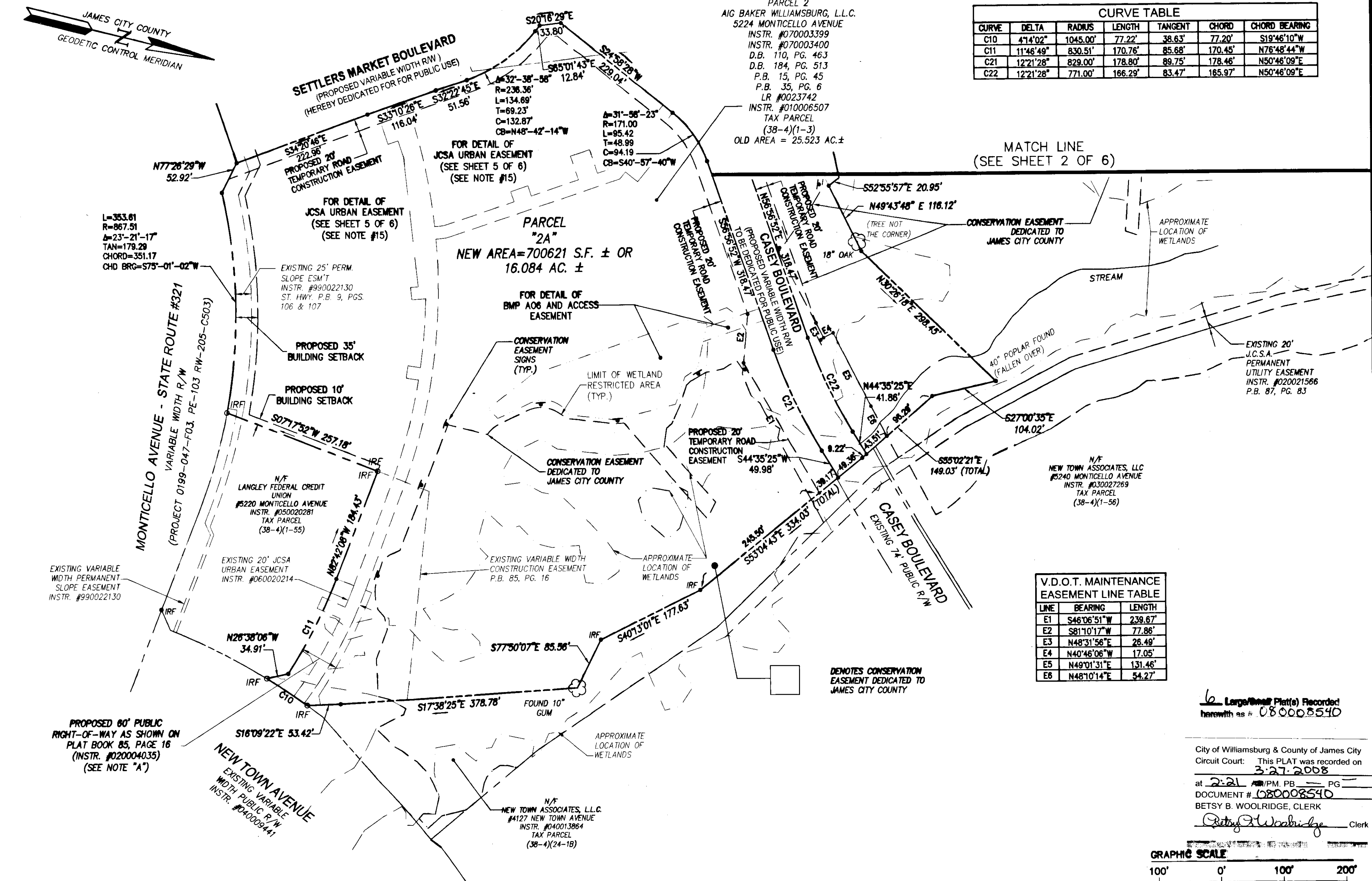
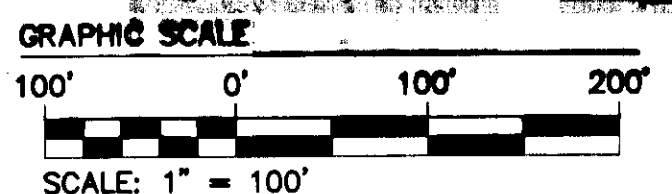
CURVE TABLE						
CURVE	DELTA	RADIUS	LENGTH	TANGENT	CHORD	CHORD BEARING
C10	41°4'02"	1045.00'	77.22'	38.63'	77.20'	S19°46'10"W
C11	11°46'49"	830.51'	170.76'	85.68'	170.45'	N76°48'44"W
C21	12°21'28"	829.00'	178.80'	89.75'	178.46'	N50°46'09"E
C22	12°21'28"	771.00'	166.29'	83.47'	165.97'	N50°46'09"E

MATCH LINE
(SEE SHEET 2 OF 6)

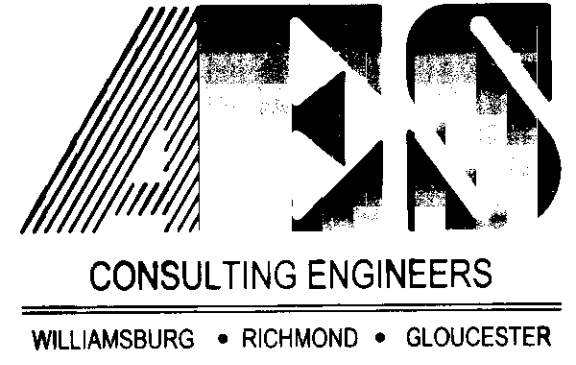
V.D.O.T. MAINTENANCE EASEMENT LINE TABLE		
LINE	BEARING	LENGTH
E1	S48°06'51"W	239.67'
E2	S81°10'17"W	77.86'
E3	N48°31'56"E	26.49'
E4	N40°46'06"W	17.05'
E5	N49°01'31"E	131.46'
E6	N48°10'14"E	54.27'

6 Large/Small Plat(s) Recorded
herewith as # 080008540

City of Williamsburg & County of James City
Circuit Court: This PLAT was recorded on
3-27-2008
at 2:21 PM. PG. 1
DOCUMENT # 080008540
BETSY B. WOOLRIDGE, CLERK
Betsy B. Woolridge Clerk

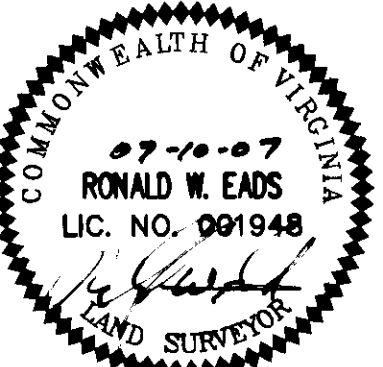


NOTE "A"
IS TO REMAIN AS AN INGRESS/EGRESS EASEMENT FOR THE BENEFIT OF THE
LANGLEY FEDERAL CREDIT UNION PARCEL AND SHALL TERMINATE AS SUCH
DEDICATION AS A PRIVATE RIGHT-OF-WAY AS CITED IN INSTRUMENT# 020004035.



5248 Olde Towne Road, Suite 1
Williamsburg, Virginia 23188
(757) 253-0040
Fax (757) 220-8994

PLAT OF SUBDIVISION, BOUNDARY LINE ADJUSTMENT, AND
PROPERTY LINE EXTINGUISHMENT OF THE PROPERTIES OWNED
BY AIG BAKER WILLIAMSBURG, L.L.C. AND
SETTLERS MARKET DEVELOPERS, LLC
NEW TOWN, SECTION 9
"SETTLER'S MARKET AT NEW TOWN"
COUNTY OF JAMES CITY BERKELEY DISTRICT VIRGINIA



No.	DATE	REVISION / COMMENT / NOTE	REVISION BY	REVIEWED BY
3.	01/28/08	REVISED PER FINAL J.C.C. COMMENTS 01-28-08	RLS	RWE
2.	11/15/07	REVISED PER J.C.S.A. COMMENTS 10-05-07	RLS	RWE
1.	9/5/07	REVISED PER J.C.S.A. COMMENTS 8-31-07	RLS	RWE

Designed AES	Drawn RLS
Scale 1"=100'	Date 07/10/07
Project No. 6632-09-01C	
Drawing No. 3 OF 6	
SUBDIVISION PLAT	