

080008539

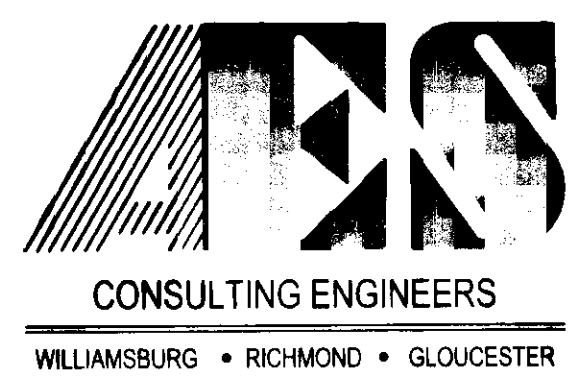
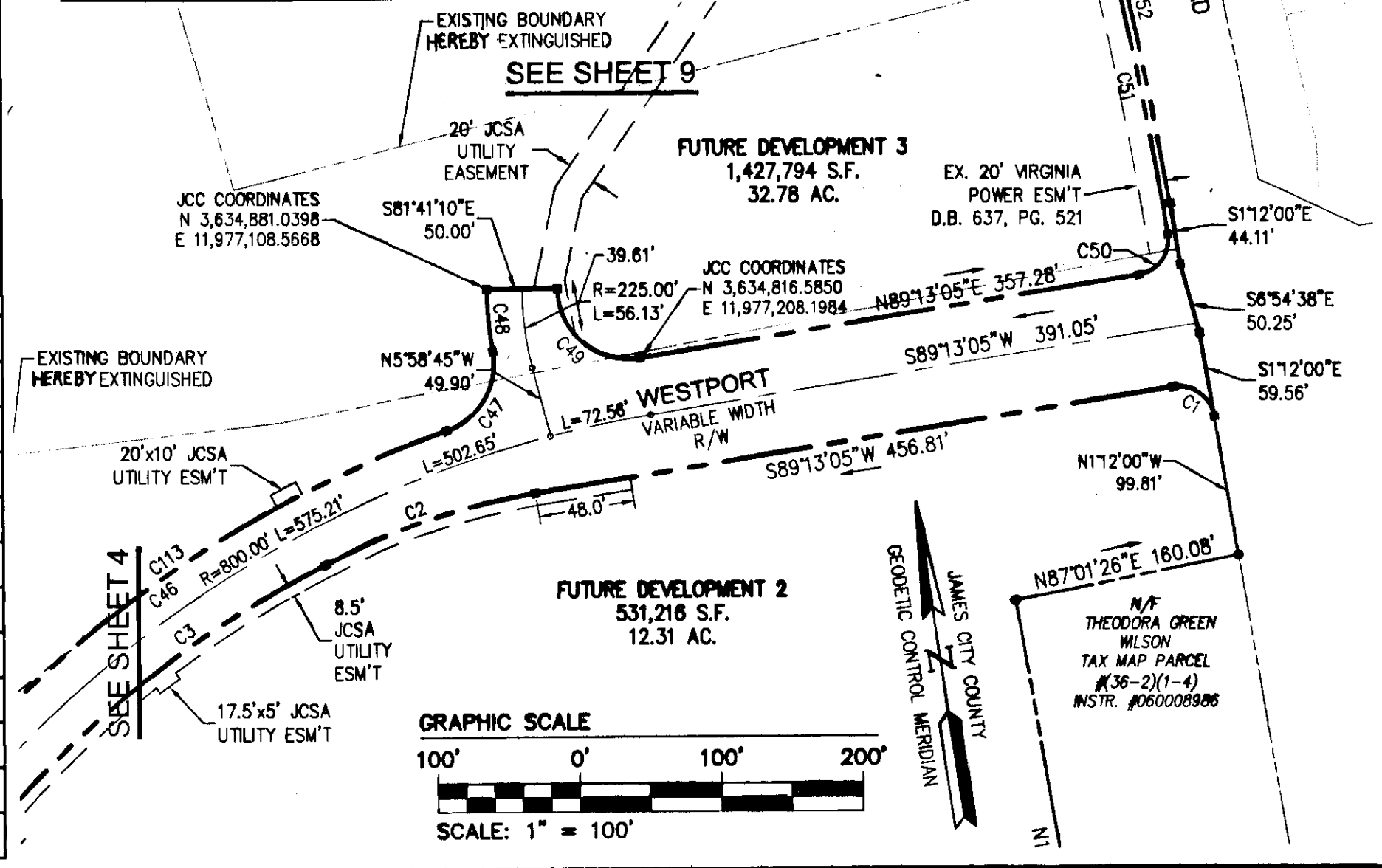
CURVE TABLE						
CURVE #	DELTA	RADIUS	LENGTH	TANGENT	CHORD	CHORD BEARING
C1	89°34'55"	25.00'	39.09'	24.82'	35.23'	N45°59'28"W
C2	18°23'16"	488.89'	156.90'	79.13'	156.23'	S80°01'27"W
C3	23°48'01"	735.30'	305.44'	154.95'	303.25'	S59°55'29"W
C4	35°20'07"	700.00'	431.70'	222.96'	424.89'	N65°41'22"E
C5	82°59'56"	50.00'	72.43'	44.24'	66.26'	N41°51'27"E
C6	35°14'40"	425.00'	261.43'	135.00'	257.33'	N17°58'49"E
C7	10°02'47"	725.00'	127.12'	63.72'	126.96'	S30°34'46"W
C8	53°12'59"	50.00'	46.44'	25.05'	44.79'	S1°03'07"E
C9	280°34'05"	67.50'	330.54'		86.26'	S67°22'34"E
C10	47°53'07"	50.00'	41.79'	22.20'	40.58'	N48°57'55"E
C11	10°34'47"	775.00'	143.11'	71.76'	142.90'	S30°18'46"W
C12	34°39'46"	375.00'	226.87'	117.03'	223.42'	N18°16'16"E
C13	86°06'01"	50.00'	75.14'	46.71'	68.26'	N42°06'38"W
C14	25°49'45"	700.00'	315.56'	160.51'	312.90'	S72°14'46"E
C15	57°03'27"	550.00'	547.71'	298.98'	525.36'	N87°51'37"W
C16	33°42'27"	625.00'	367.69'	189.34'	362.41'	N80°27'53"E
C17	24°31'21"	950.00'	406.60'	206.46'	403.50'	S85°03'26"W
C18	42°33'09"	1300.00'	965.48'	506.23'	943.44'	S85°55'40"E
C19	50°20'06"	50.00'	43.93'	23.49'	42.53'	N89°49'09"W
C20	280°40'41"	67.50'	330.67'		86.16'	S25°21'08"W
C21	50°19'27"	50.00'	43.92'	23.49'	42.52'	S39°29'22"E
C22	42°33'08"	1250.00'	928.34'	486.76'	907.16'	S85°55'40"E
C23	13°28'47"	1000.00'	235.27'	118.18'	234.72'	S79°32'10"W
C24	85°54'14"	50.00'	74.97'	46.55'	68.14'	N43°19'26"E
C25	4°44'13"	500.00'	41.34'	20.68'	41.33'	N1°59'48"W
C26	88°09'49"	275.00'	423.15'	266.32'	382.63'	N48°26'49"W
C27	29°47'48"	325.00'	169.02'	86.47'	167.12'	S77°37'49"E
C28	80°48'49"	40.00'	56.42'	34.05'	51.86'	S76°51'40"W
C29	255°03'16"	67.50'	300.48'		107.06'	S16°01'07"E
C30	29°47'48"	275.00'	143.01'	73.16'	141.41'	S77°37'49"E
C31	88°09'49"	325.00'	500.09'	314.75'	452.20'	N48°26'49"W
C32	4°44'13"	550.00'	45.47'	22.75'	45.46'	N1°59'48"W
C33	85°54'14"	50.00'	74.97'	46.55'	68.14'	S42°34'48"E
C34	2°51'02"	1000.00'	49.75'	24.88'	49.75'	N84°06'24"W
C35	33°42'27"	575.00'	338.28'	174.19'	333.42'	N80°27'53"E
C36	57°03'27"	600.00'	597.51'	326.16'	573.12'	N87°51'37"W
C37	72°38'49"	650.00'	824.15'	477.88'	770.05'	N84°20'43"E
C38	90°00'00"	50.00'	78.54'	50.00'	70.71'	N3°01'18"E
C39	22°22'52"	975.00'	380.86'	192.89'	378.44'	N53°10'08"W
C40	48°11'23"	60.00'	50.46'	26.83'	48.99'	N88°27'15"W
C41	276°22'46"	67.50'	325.60'		90.00'	S25°38'26"W
C42	48°11'23"	60.00'	50.46'	26.83'	48.99'	S40°15'52"E
C43	10°30'20"	67.50'	12.38'	6.21'	12.36'	N72°42'13"E
C44	22°22'52"	1025.00'	400.39'	202.78'	397.85'	N53°10'08"W

CURVE TABLE						
CURVE #	DELTA	RADIUS	LENGTH	TANGENT	CHORD	CHORD BEARING
C45	90°00'00"	50.00'	78.54'	50.00'	70.71'	S86°58'42"E
C46	31°08'06"	825.00'	448.31'	229.84'	442.82'	S63°35'21"W
C47	80°56'25"	50.00'	70.63'	42.66'	64.91'	N38°41'12"E
C48	10°05'50"	250.00'	44.06'	22.09'	44.00'	S3°15'55"W
C49	99°05'45"	50.00'	86.48'	58.64'	76.09'	S41°14'03"E
C50	90°00'53"	25.00'	39.28'	25.01'	35.36'	N44°12'38"E
C51	4°07'05"	2842.00'	204.26'	102.18'	204.22'	N2°51'21"W
C52	5°44'00"	2829.79'	283.17'	141.70'	283.05'	N4°04'00"W
C53	8°58'07"	700.00'	109.57'	54.90'	109.46'	N52°30'22"E
C54	19°30'16"	700.00'	238.29'	120.31'	237.14'	N66°44'34"E
C55	6°51'43"	700.00'	83.83'	41.97'	83.78'	N79°55'34"E
C56	1°24'26"	725.00'	17.80'	8.90'	17.80'	S34°53'57"W
C57	8°38'21"	725.00'	109.32'	54.76'	109.21'	S29°52'33"W
C58	68°59'32"	67.50'	81.28'	46.38'	76.46'	N6°50'10"E
C59	63°08'21"	67.50'	74.38'	41.48'	70.68'	N72°54'06"E
C60	52°42'41"	67.50'	62.10'	33.44'	59.93'	N49°10'22"W
C61	95°43'31"	67.50'	112.77'	74.61'	100.11'	S25°02'44"W
C62	3°08'36"	775.00'	42.52'	21.26'	42.51'	S26°35'40"W
C63	7°26'11"	775.00'	100.59'	50.36'	100.52'	S31°53'04"W
C64	22°53'53"	700.00'	279.75'	141.77'	277.90'	S73°42'42"E
C65	2°55'52"	700.00'	35.81'	17.91'	35.81'	S60°47'49"E
C66	36°50'48"	550.00'	353.70'	183.21'	347.64'	N77°45'17"W
C67	20°12'39"	550.00'	194.01'	98.02'	193.01'	N73°42'59"E
C68	1°10'35"	625.00'	12.83'	6.42'	12.83'	N64°11'57"E
C69	18°51'27"	625.00'	205.70'	103.79'	204.78'	N74°12'58"E
C70	13°40'26"	625.00'	149.16'	74.93'	148.80'	S89°31'06"E
C71	3°08'54"	950.00'	52.20'	26.11'	52.20'	N84°15'20"W
C72	12°05'20"	950.00'	200.44'	100.59'	200.07'	S88°07'33"W
C73	9°17'07"	950.00'	153.95'	77.15'	153.79'	S77°26'19"W
C74	3°38'19"	1300.00'	82.55'	41.29'	82.54'	S74°36'55"W
C75	13°16'05"	1300.00'	301.05'	151.20'	300.37'	N83°04'07"E
C76	7°54'32"	1300.00'	179.44'	89.87'	179.30'	S86°20'34"E
C77	14°04'06"	1300.00'	319.20'	160.41'	318.40'	S75°21'15"E
C78	3°40'06"	1300.00'	83.23'	41.63'	83.22'	S66°29'09"E
C80	51°58'57"	67.50'	61.24'	32.91'	59.16'	S88°59'43"E
C81	45°03'36"	67.50'	53.08'	28.00'	51.73'	S40°28'27"E
C82	146°40'58"	67.50'	172.81'	225.58'	129.33'	S55°23'50"W
C83	36°57'09"	67.50'	43.53'	22.55'	42.78'	N32°47'06"W
C84	12°02'47"	1250.00'	262.81'	131.89'	262.33'	S70°40'30"E
C85	17°08'55"	1250.00'	374.12'	188.47'	372.73'	S85°16'21"E
C86	13°21'26"	1250.00'	291.41'	146.37'	290.75'	N79°28'29"E
C87	17°00'47"	325.00'	96.50'	48.61'	96.15'	S84°01'20"E
C88	12°47'01"	325.00'	72.51'	36.41'	72.36'	S69°07'26"E

CURVE TABLE						
CURVE #	DELTA	RADIUS	LENGTH	TANGENT	CHORD	CHORD BEARING
C89	126°09'25"	67.50'	148.63'	132.93'	120.37'	S80°28'02"E
C90	26°59'00"	67.50'	31.79'	16.19'	31.50'	S3°53'49"E
C91	35°16'15"	67.50'	41.55'	21.46'	40.90'	S27°13'48"W
C92	66°38'35"	67.50'	78.51'	44.38'	74.16'	S78°11'14"W
C93	29°47'48"	275.00'	143.01'	73.16'	141.41'	S77°37'49"E
C96	10°59'17"	325.00'	62.33'	31.26'	62.23'	N55°56'31"W
C97	6°23'55"	325.00'	36.29'	18.17'	36.28'	N47°14'55"W
C98	28°47'20"	325.00'	163.30'	83.41'	161.59'	N29°39'18"W
C99	10°53'44"	325.00'	61.80'	31.00'	61.71'	N9°48'46"W
C100	30°22'49"	575.00'	304.88'	156.12'	301.33'	N82°07'43"E
C101	3°19'39"	575.00'	33.39'	16.70'	33.39'	S65°16'29"W
C102	25°18'41"	600.00'	265.06'	134.73'	262.91'	S76°16'00"W
C103	25°15'13"	600.00'	264.45'	134.41'	262.32'	N78°27'03"W
C104	6°29'33"	600.00'	67.99'	34.03'	67.95'	N62°34'40"W
C105	55°10'54"	650.00'	626.01'	339.68'	602.10'	S86°55'20"E
C106	17°27'55"	650.00'	198.14'	99.84'	197.37'	N56°45'16"E
C107	127°41'03"	67.50'	150.42'	137.43'	121.17'	S38°12'05"E
C108	22°11'55"	67.50'	26.15'	13.24'	25.99'	S36°44'24"W
C109	115°59'27"	67.50'	136.65'	108.00'	114.48'	N74°09'55"W
C110	5°38'28"	1025.00'	100.92'	50.50'	100.88'	N61°32'20"W
C111	16°44'24"	1025.00'	299.47'	150.81'	298.41'	N50°20'54"W
C112	2°08'35"	825.00'	30.86'	15.43'	30.86'	S49°05'36"W
C113	28°59'31"	825.00'	417.45'	213.30'	413.01'	S64°39'36"W
C114	1°08'22"	1125.00'	22.37'	11.19'	22.37'	N67°55'18"W
C115	4°37'15"	1125.00'	90.71'	45.39'	90.69'	N65°02'31"W

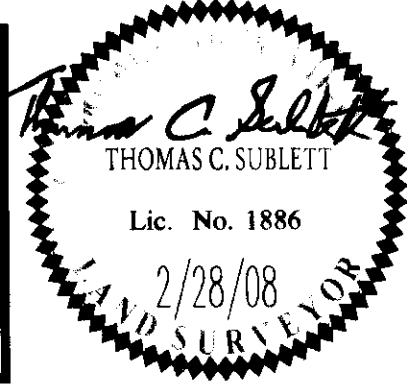
City of Williamsburg & County of James City
 Circuit Court: This PLAT was recorded on
 3-27-2008
 at 2:16 PM, PG
 DOCUMENT # 080008539
 BETSY B. WOOLRIDGE, CLERK
Betsy Woolridge

10 Large/Small Plate Recording
 herewith as # 080008539



5248 Olde Towne Road, Suite 1
 Williamsburg, Virginia 23188
 (757) 253-0040
 Fax (757) 220-8994

PLAT OF SUBDIVISION
 LOTS 5 - 22; 25 - 47, SECTION XXXV
FORD'S COLONY
WILLIAMSBURG
 POWHATAN DISTRICT JAMES CITY COUNTY VIRGINIA



No.	DATE	REVISION / COMMENT / NOTE	REVIEWED BY	BY
4	2/28/08	REVISED PER COUNTY COMMENTS	JAG	AMR
3	2/15/08	REVISED PER COUNTY COMMENTS	JAG	GVC
2	8/9/07	REVISED PER COUNTY COMMENTS	JAG	AWT
1	1/24/07	REVISED PER COUNTY COMMENTS	JAG	AWT

Designed	Drawn
JAG	AES
Scale	Date
1"=100'	3/5/08
Project No.	5652-21
Drawing No.	3 of 10