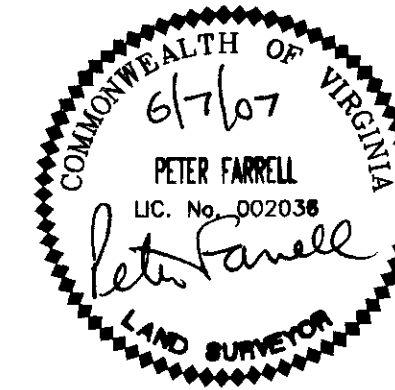


080008365

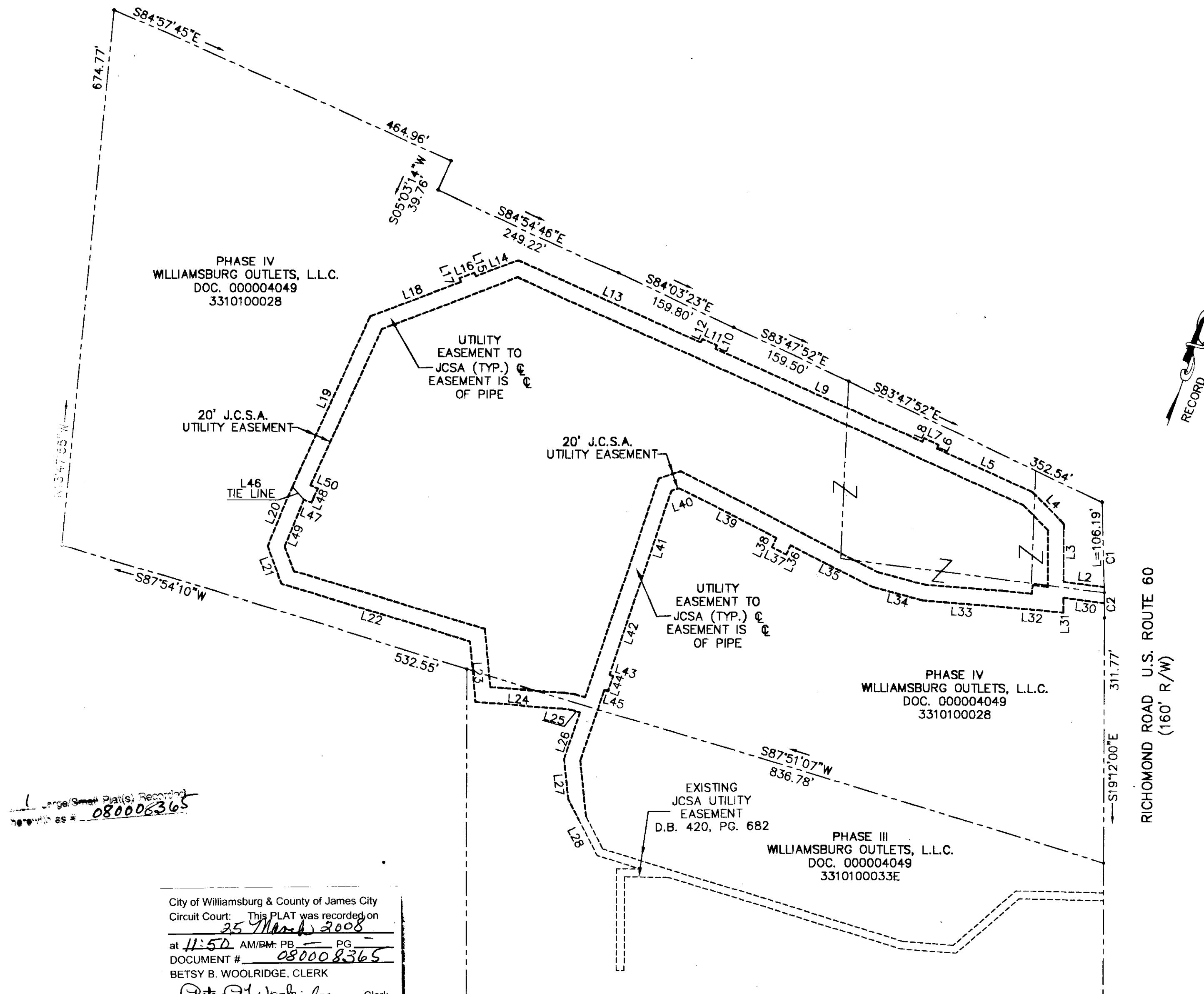
PLAT SHOWING  
UTILITY EASEMENT  
TO BE DEDICATED TO  
JAMES CITY SERVICE AUTHORITY  
AT PRIME OUTLETS,  
WILLIAMSBURG  
PHASE IV & PHASE III  
JAMES CITY COUNTY, VIRGINIA  
SCALE 1"=100' DATE: 01/17/07  
REVISED: 6-7-07



**LANDMARK  
DESIGN GROUP**  
Engineers • Planners • Surveyors  
Landscape Architects • Environmental Consultants

4029 Ironbound Road  
Suite 100  
Williamsburg, VA 23188  
Tel. (757) 253-2975  
Fax (757) 228-0049  
Email: lmdg@landmarkdg.com

5544 Greenwich Road  
Suite 200  
Virginia Beach, VA 23462  
Tel. (757) 473-2000  
Fax (757) 497-7933  
Email: lmdg@landmarkdg.com



1 Large/Small Plat(s) Recorded  
with as # 080008365

City of Williamsburg & County of James City  
Circuit Court: This PLAT was recorded on  
25 March 2008  
at 11:50 AM/PM: PB: PG:  
DOCUMENT # 080008365  
BETSY B. WOOLRIDGE, CLERK

*Betsy B. Woolridge* Clerk

EASEMENT LINE TABLE		
LINE	LENGTH	BEARING
L2	51.10'	N77°52'32"E
L3	72.81'	S19°13'17"E
L4	56.00'	S64°06'35"E
L5	131.38'	S84°54'56"E
L6	5.00'	S05°05'04"W
L7	20.00'	S84°54'56"E
L8	5.00'	S05°05'04"W
L9	285.17'	S84°54'56"E
L10	5.00'	S05°05'04"W
L11	20.00'	S84°54'56"E
L12	5.00'	S05°05'04"W
L13	251.08'	S84°54'56"E
L14	57.77'	N49°48'14"E
L15	5.00'	S40°11'46"E
L16	20.00'	N49°48'14"E
L17	5.00'	S40°11'46"E
L18	121.80'	N49°48'14"E
L19	236.35'	N05°06'04"E
L20	80.06'	N03°32'46"E
L21	51.10'	N39°31'43"W
L22	247.33'	S87°34'15"W
L23	76.79'	N24°26'31"W
L24	108.62'	S74°44'54"W
L25	10.12'	S87°49'55"W
L26	62.82'	N00°44'49"W
L27	65.74'	N25°08'23"W
L28	70.12'	N45°50'45"W
L30	51.37'	N77°52'32"E
L31	18.54'	N19°13'17"W
L32	79.76'	N75°39'12"E
L33	97.01'	N75°02'45"E
L34	65.68'	N85°31'03"E
L35	115.33'	S82°08'07"E
L36	12.58'	N07°51'53"E
L37	20.00'	N82°08'07"W
L38	12.58'	N07°51'53"E
L39	136.99'	S82°08'07"E
L40	10.42'	N52°19'27"E
L41	135.61'	N00°44'49"W
L42	107.72'	N00°44'49"W
L43	5.00'	S89°15'11"W
L44	20.00'	N00°44'49"W
L45	5.00'	N89°15'11"E
L46	22.16'	S60°57'06"E
L47	10.00'	N86°27'14"W
L48	10.60'	S05°06'11"W
L49	9.40'	S03°32'46"W
L50	10.00'	N86°27'14"W

CURVE TABLE						
CURVE	LENGTH	RADIUS	TANGENT	CHORD	CHORD BEARING	DELTA
C1	113.22'	5321.74'	56.61'	113.22'	N20°44'56"W	1°13'08"
C2	31.64'	5321.74'	15.82'	31.64'	N19°58'08"W	0°20'26"

DRAWN BY: PF  
CHKD. BY: AST  
PROJ. NO.: 1870040-600.11X  
DWG. NO.: 17637W