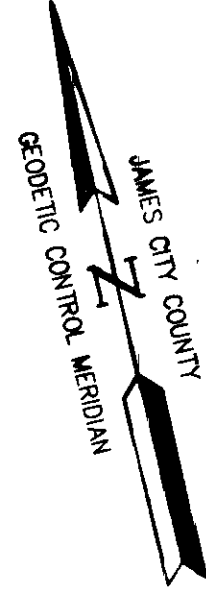
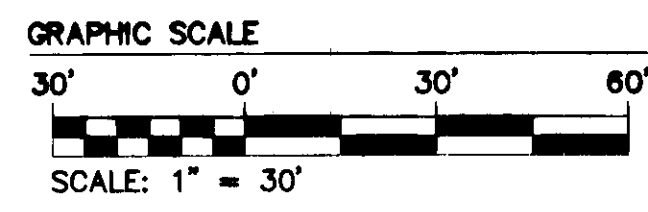


080007658



NOW OR FORMERLY  
BERTRAND E. GEDDY, JR.  
TAX MAP PARCEL #12-2(1-8)  
INSTRUMENT #060028760  
INSTRUMENT #050030505

PROPERTY LINE  
IS ALONG  
CA OF STREAM  
(SURVEY LINES  
ONLY!!!)



NOW OR FORMERLY  
BERTRAND E. GEDDY, JR.  
TAX MAP PARCEL #12-2(1-8B)  
INSTRUMENT #060028760  
INSTRUMENT #050030505

N26°25'04"E  
143.41'

JCC COORDINATES  
N 3,674,548.2677  
E 11,976,554.1257

CONSERVATION ESM'T  
#5 DEDICATED TO  
JAMES CITY COUNTY  
13,369 S.F.±  
0.34 AC.±

CA-1  
796,771 S.F.  
18.29 AC.

CA-1  
796,771 S.F.  
18.29 AC.

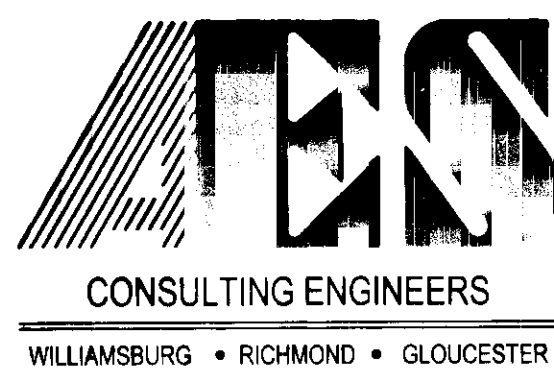
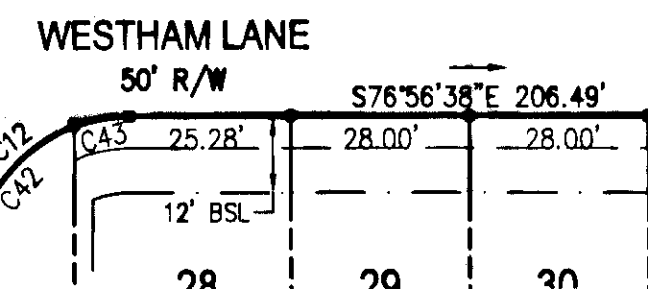
SEE SHEET 9

CA-1  
796,425 S.F.  
18.33 AC.

CA-7  
17,798 S.F.  
0.41 AC.

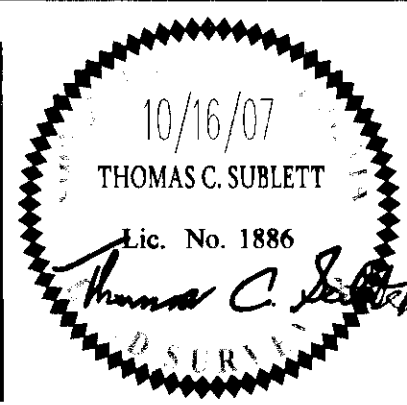
SEE SHEET 7

SEE SHEET 2



5248 Olde Towne Road, Suite 1  
Williamsburg, Virginia 23188  
(757) 253-0040  
Fax (757) 220-8994

PLAT OF SUBDIVISION  
WHITE HALL  
SECTION 1, PHASE A  
OWNER: RAUCH DEVELOPMENT CO., L.L.C.  
STONEHOUSE DISTRICT JAMES CITY COUNTY VIRGINIA



City of Williamsburg & County of James City Circuit Court: This PLAT was recorded on <i>14 March 2008</i>	
at <i>10:20</i> AM/PM: PB PG	
DOCUMENT # <i>080007658</i>	
BETSY B. WOOLRIDGE, CLERK	
<i>Betsy Woolridge</i> Clerk	
1 2/11/08	AWT TCS
No. DATE	REVISION / COMMENT / NOTE
	REVIEWED BY

Designed ABS	Drawn AWT
Scale 1"=30'	Date 10/16/07
Project No. 9048-10	
Drawing No. 8 of 9	

S:\Jobs\9048\10-Ph1-Townhome-Root\ambs\dwg\Surf\Plats\904810 SUBD SH 8.dwg, 3/17/2008 11:06:37 AM, aaron.smail