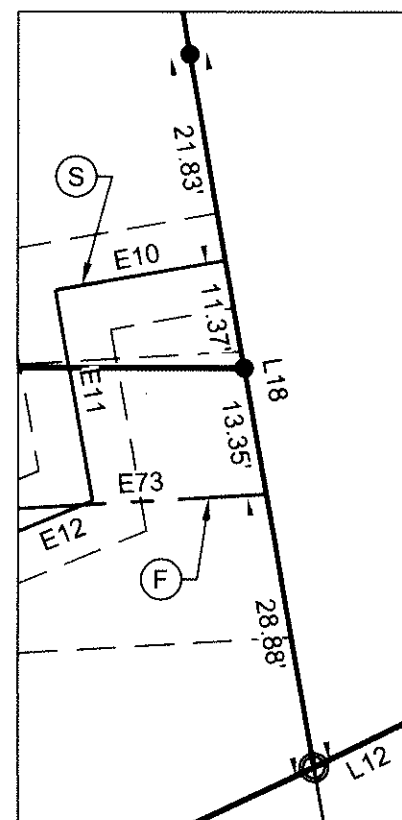


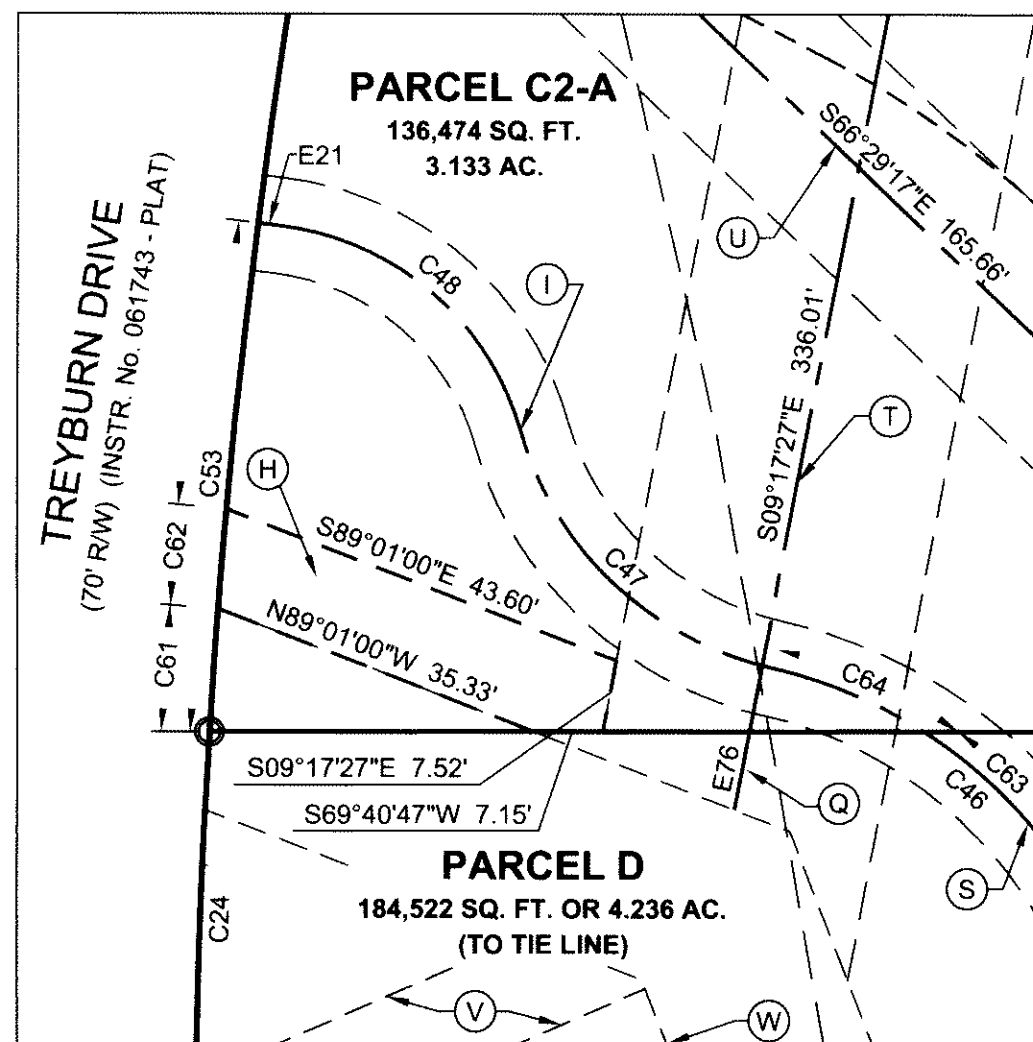
#071835

ESM'T LINE TABLE			ESM'T LINE TABLE		
LINE	BEARING	LENGTH	LINE	BEARING	LENGTH
E1	NOT USED		E39	N69°44'18"E	31.70'
E2	S69°44'18"W	8.00'	E40	N69°44'18"E	28.20'
E3	N20°15'42"W	10.50'	E41	N69°44'18"E	19.20'
E4	N20°15'40"W	20.00'	E42	N60°39'50"E	3.80'
E5	N20°15'42"W	10.50'	E43	NOT USED	
E6	N69°44'18"E	41.00'	E44	NOT USED	
E7	S20°15'42"E	11.04'	E45	N25°13'55"W	49.65'
E8	S20°15'42"E	10.00'	E46	S68°10'43"E	14.92'
E9	S20°15'42"E	11.04'	E47	S69°44'18"W	14.58'
E10	N59°48'15"E	18.02'	E48	S45°49'03"W	2.38'
E11	N30°11'45"W	22.27'	E49	NOT USED	
E12	N47°21'21"E	128.43'	E50	NOT USED	
E13	N47°21'21"E	27.62'	E51	NOT USED	
E14	N69°44'18"E	13.64'	E52	NOT USED	
E15	N64°14'59"E	17.16'	E53	S46°19'36"E	22.06'
E16	N29°20'26"W	3.85'	E54	S69°02'44"E	27.83'
E17	N19°57'12"E	82.28'	E55	S69°44'18"W	22.96'
E18	S73°34'32"E	42.39'	E56	NOT USED	
E19	S82°27'45"E	89.30'	E57	NOT USED	
E20	S40°19'51"E	36.60'	E58	NOT USED	
E21	N76°43'37"E	2.29'	E59	S19°17'18"E	59.34'
E22	N20°15'42"W	17.24'	E60	S47°08'26"W	33.78'
E23	N24°44'18"E	14.14'	E61	S66°15'24"W	71.57'
E24	S20°15'42"E	53.60'	E62	S63°56'51"W	154.40'
E25	N69°44'18"E	20.17'	E63	S67°06'39"W	16.67'
E26	S24°44'18"W	17.07'	E64	N80°20'36"W	4.00'
E27	S20°15'42"E	37.96'	E65	N23°45'23"W	56.08'
E28	N20°15'42"W	27.32'	E66	N27°20'18"E	8.40'
E29	S20°15'42"E	28.16'	E67	N65°00'29"W	6.00'
E30	N20°15'42"W	21.35'	E68	N 23°14'11"E	6.17'
E31	N20°15'42"W	47.83'	E69	N85°05'44"W	3.65'
E32	NOT USED		E70	N04°26'57"W	25.30'
E33	S20°15'42"E	25.15'	E71	N20°15'42"W	16.21'
E34	N20°15'42"W	39.50'	E72	N69°57'23"E	12.61'
E35	S20°15'42"E	50.76'	E73	S66°21'52"W	120.91'
E36	S20°15'42"E	50.15'	E74	N20°15'42"W	27.33'
E37	N20°15'42"W	36.90'	E75	S20°15'42"E	27.52'
E38	N69°44'18"E	9.00'	E76	S09°17'27"E	8.28'

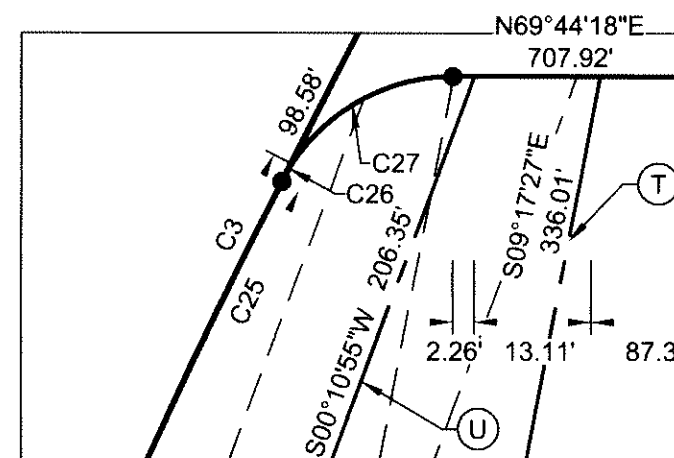
CURVE TABLE						CURVE TABLE					
CURVE	RADIUS	LENGTH	DELTA	CHORD	CH BEARING	CURVE	RADIUS	LENGTH	DELTA	CHORD	CH BEARING
C1	723.08	109.26'	8°39'27"	109.16'	N 66°54'32" E	C33	225.00	93.41'	23°47'08"	92.74'	N 08°22'08" W
C2	175.00	78.88'	25°49'37"	78.22'	S 33°10'30" E	C34	14.00	14.47'	59°13'17"	13.83'	S 30°11'36" W
C3	815.00	385.36'	27°05'29"	381.78'	N 06°39'42" W	C35	14.00	11.43'	46°46'24"	11.11'	N 23°58'09" E
C4	635.00	261.55'	23°35'57"	259.70'	N 04°54'56" W	C36	28.00	47.31'	96°48'36"	41.88'	S 84°14'21" E
C5	831.98	80.45'	5°32'24"	80.41'	N 48°49'26" E	C37	31.00	40.27'	74°25'39"	37.50'	N 73°02'53" W
C6	20.00	33.32'	95°27'12"	29.60'	S 86°13'10" E	C38	183.50	17.58'	5°29'19"	17.57'	S 66°59'38" W
C7	125.00	39.77'	18°13'52"	39.61'	S 29°22'38" E	C39	31.50	51.45'	93°35'25"	45.92'	S 17°27'17" W
C8	175.00	62.29'	20°23'43"	61.97'	S 10°03'51" E	C40	63.50	54.63'	49°17'38"	52.96'	N 04°41'37" W
C9	5.00	6.07'	69°36'17"	5.71'	S 34°56'09" W	C41	64.00	107.25'	96°00'55"	95.13'	N 67°57'40" E
C10	20.00	34.21'	97°59'55"	30.19'	N 61°15'45" W	C42	76.50	77.16'	57°47'20"	73.93'	S 87°04'27" W
C11	635.00	49.34'	4°27'08"	49.33'	N 14°29'21" W	C43	46.50	39.15'	48°14'40"	38.01'	N 82°18'08" E
C12	12.00	23.36'	111°31'30"	19.84'	S 54°29'57" E	C44	250.00	38.78'	8°53'13"	38.74'	N 78°01'08" W
C13	225.00	78.34'	19°56'56"	77.94'	S 08°42'40" E	C45	25.00	18.38'	42°07'54"	17.97'	S 61°23'48" E
C14	12.00	18.52'	88°25'26"	16.74'	S 25°31'35" W	C46	50.00	49.88'	57°09'18"	47.83'	N 68°54'30" W
C15	20.00	40.89'	117°08'44"	34.13'	N 51°41'20" W	C47	35.50	37.78'	60°58'22"	36.02'	S 66°59'59" E
C16	635.00	117.87'	10°38'07"	117.70'	N 01°33'59" E	C48	30.00	34.96'	66°45'35"	33.01'	N 69°53'36" W
C17	20.00	25.65'	73°29'23"	23.93'	N 32°59'36" E	C49	NOT USED				
C18	635.00	94.33'	8°30'42"	94.25'	N 08°00'26" W	C50	NOT USED				
C19	175.00	38.68'	12°39'50"	38.60'	S 06°27'56" W	C51	475.00	11.72'	1°24'48"	11.72'	S 29°25'51" E
C20	225.00	45.29'	11°32'03"	45.22'	S 07°01'49" W	C52	NOT USED				
C21	175.00	100.97'	33°03'33"	99.58'	N 03°43'56" W	C53	815.00	53.27'	3°44'42"	53.26'	S 14°50'06" E
C22	225.00	123.63'	31°28'59"	122.08'	N 02°56'39" W	C54	6.50	7.63'	67°13'31"	7.20'	S 77°13'53" E
C23	525.00	90.49'	9°52'33"	90.38'	S 25°11'59" E	C55	225.00	8.87'	2°15'32"	8.87'	N 11°40'04" E
C24	815.00	49.79'	3°30'00"	49.77'	N 18°27'27" W	C56	225.00	27.55'	7°00'53"	27.53'	N 07°01'52" E
C25	815.00	332.96'	23°24'27"	330.65'	N 05°00'14" W	C57	225.00	27.13'	6°54'33"	27.12'	N 00°04'09" E
C26	815.00	2.62'	0°11'02"	2.62'	N 06°47'31" E	C58	NOT USED				
C27	20.00	22.00'	63°02'18"	20.91'	N 38°13'09" E	C59	NOT USED				
C28	12.00	18.85'	90°00'00"	16.97'	S 65°15'42" E	C60	175.00	28.48'	9°19'25"	28.45'	N 14°01'25" E
C29	475.00	81.87'	9°52'33"	81.77'	N 25°11'59" W	C61	815.00	12.87'	0°54'17"	12.87'	N 16°15'19" W
C30	175.00	96.16'	31°28'59"	94.95'	N 02°56'39" W	C62	815.00	10.43'	0°43'58"	10.43'	N 15°26'11" W
C31	225.00	129.82'	33°03'33"	128.03'	S 03°43'56" E	C63	50.00	32.65'	37°24'52"	32.07'	N 59°02'17" W
C32	225.00	36.42'	9°16'25"	36.38'	N 08°09'38" E	C64	50.00	17.23'	19°44'26"	17.14'	N 87°36'57" W
						C65	225.00	6.50'	1°39'15"	6.50'	N 04°12'45" W



DETAIL 'C'  
(SHEET 6 OF 9)  
N.T.S.



DETAIL 'D'  
(SHEET 6 OF 9)  
N.T.S.



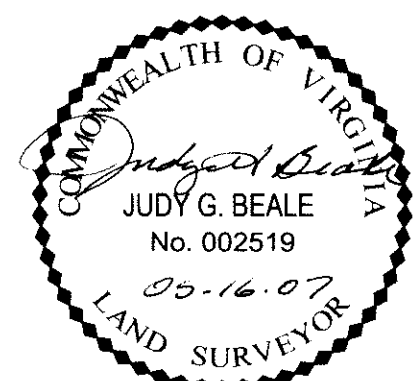
DETAIL 'E'  
(SHEET 6 OF 9)  
N.T.S.

- (F) Q OF 30' PRIVATE DRAINAGE EASEMENT HEREBY ESTABLISHED. AREA= 3,627 SQ. FT. OR 0.083 AC.
- (H) VARIABLE WIDTH SANITARY SEWER EASEMENT TO BE RESERVED BY THE CITY OF WILLIAMSBURG, VIRGINIA UPON CONVEYANCE OUT OF PARCEL C2-A. AREA= 421 SQ. FT. OR 0.010 AC.
- (I) 10' PEDESTRIAN ACCESS EASEMENT TO BE RESERVED BY THE CITY OF WILLIAMSBURG, VIRGINIA UPON CONVEYANCE OUT OF PARCEL C2-A. AREA= 919 SQ. FT. OR 0.021 AC.
- (Q) Q OF 30' SANITARY SEWER EASEMENT HEREBY DEDICATED TO THE CITY OF WILLIAMSBURG, VIRGINIA. AREA = 313 SQ. FT. OR 0.007 AC.
- (S) 10' PEDESTRIAN ACCESS EASEMENT HEREBY DEDICATED TO THE CITY OF WILLIAMSBURG, VIRGINIA. AREA= 10,065 SQ. FT. OR 0.231 AC.
- (T) Q OF 30' SANITARY SEWER EASEMENT TO BE RESERVED BY THE CITY OF WILLIAMSBURG, VIRGINIA UPON CONVEYANCE OUT OF PARCEL C2-A. AREA= 10,080 SQ. FT. OR 0.231 AC.
- (U) Q OF 20' PRIVATE DRAINAGE EASEMENT HEREBY ESTABLISHED. AREA= 7,654 SQ. FT. OR 0.176 AC.
- (V) 10' SANITARY EASEMENT (D.B. 53 PG. 590) CITY OF WILLIAMSBURG
- (W) CITY OF WILLIAMSBURG SANITARY EASEMENT OF UNSPECIFIED WIDTH (D.B. 48 PG. 214, D.B. 48 PG. 216, D.B. 48 PG. 219, D.B. 48 PG. 526, D.B. 50 PG. 664, D.B. 50 PG. 725)

BOUNDARY LINE TABLE		
LINE	BEARING	LENGTH
L1	N26°15'57"E	33.26'
L2	N73°13'40"E	47.00'
L3	N73°11'23"E	49.93'
L4	N71°40'31"E	32.08'
L5	S13°55'50"E	24.42'
L6	S52°20'17"W	40.21'
L7	S35°45'58"W	40.98'
L8	N72°09'14"E	12.00'
L9	S17°50'46"E	44.37'
L10	NOT USED	
L11	NOT USED	
L12	S43°32'56"W	52.10'
L13	S36°32'22"E	51.20'
L14	S36°32'22"E	4.44'
L15	N79°46'44"E	23.08'
L16	S18°41'08"E	41.34'
L17	S20°15'42"E	32.35'
L18	S30°08'15"E	75.43'

SEE SHEET 1 OF 9 NOTES & CERTIFICATIONS

RESUBDIVISION  
OF PROPERTY OF  
**WILLIAMSBURG HIGH STREET HOLDINGS, LLC**  
RESIDUAL PARCEL 2  
AND  
**CITY OF WILLIAMSBURG, VIRGINIA**  
PARCELS C2, G2 & G3  
(INSTR. No. 061743)  
WILLIAMSBURG, VIRGINIA



VIRGINIA:  
IN THE CLERK'S OFFICE OF THE CIRCUIT COURT OF THE CITY OF WILLIAMSBURG, VIRGINIA ON THIS 21 DAY OF June 2007, THIS PLAT WAS RECEIVED AND ADMITTED TO RECORD IN MAP BOOK \_\_\_\_\_ AT PAGE \_\_\_\_\_ AT 2:15 p.m.  
Inst. 071835  
TESTE: *Sheela Hallman* CLERK

REVISED: 05-11-07 - CITY COMMENTS  
REVISED: 04-27-07 - CITY COMMENTS  
REVISED: 04-19-07 - PARCEL C1 & C2-A  
REVISED: 03-30-07 - PARCEL G-1



**WOOLPERT, INC.**  
415 PORT CENTRE PARKWAY  
SUITE 101  
PORTSMOUTH, VA 23704-4924  
TEL: 757.399.6882 FAX: 757.399.6869

DES. N/A JOB NO. 62896.04  
DRN. RDA SCALE N/A  
CKD. JGB DATE 9-25-06  
SHEET NO. 9 OF 9  
FILE NO. Prelimsub2-sh9.dwg