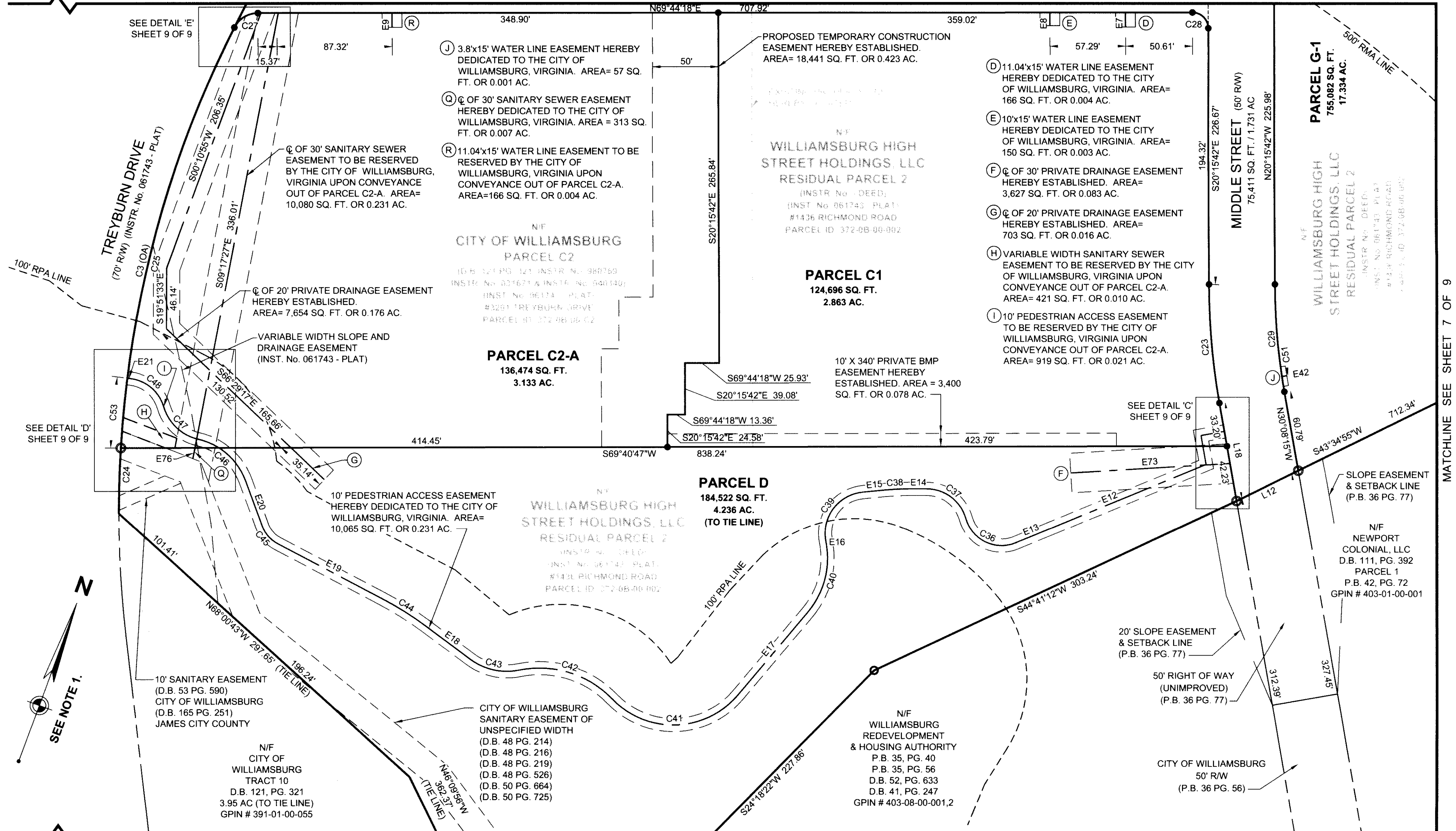


#071835

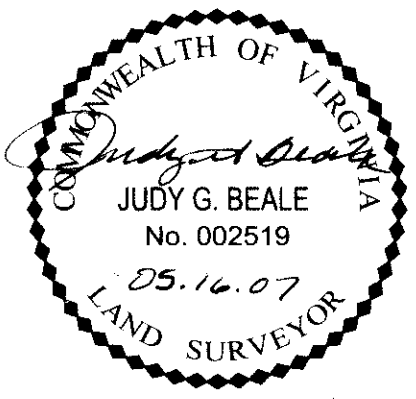
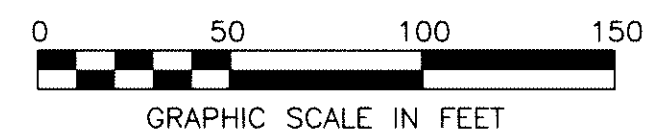
MATCHLINE SEE SHEET 4 OF 9



MATCHLINE SEE SHEET 8 OF 9

LEGEND

- IP(S) IRON PIN TO BE SET
- IP(F) IRON PIN FOUND
- NAIL(S) NAIL TO BE SET
- ⊗ NAIL(F) NAIL FOUND
- PIPE(F) IRON PIPE FOUND



SEE SHEET 1 OF 9 NOTES & CERTIFICATIONS
SEE SHEET 9 OF 9 FOR CURVE & LINE TABLES

RESUBDIVISION
OF PROPERTY OF
WILLIAMSBURG HIGH STREET HOLDINGS, LLC
AND
CITY OF WILLIAMSBURG, VIRGINIA
PARCELS C2, G2 & G3
(INSTR. No. 061743)
WILLIAMSBURG, VIRGINIA



415 PORT CENTRE PARKWAY
SUITE 101
PORTSMOUTH, VA 23704-4924
TEL: 757.399.6882 FAX: 757.399.6869

DES. N/A JOB NO. 62896.04
DRN. RDA SCALE 1"=50'
CKD. JGB DATE 9-25-06

SHEET NO. 6 OF 9
FILE NO. Prelimsub2-sh6.dwg

VIRGINIA:
IN THE CLERK'S OFFICE OF THE CIRCUIT COURT OF THE CITY OF WILLIAMSBURG,
VIRGINIA ON THIS 21 DAY OF June, 2007, THIS PLAT WAS RECEIVED AND
ADMITTED TO RECORD IN MAP BOOK _____ AT PAGE _____ AT 2:15 p.m.
Inst. 071835
TESTE: *Judy G. Beale* CLERK

MATCHLINE SEE SHEET 7 OF 9