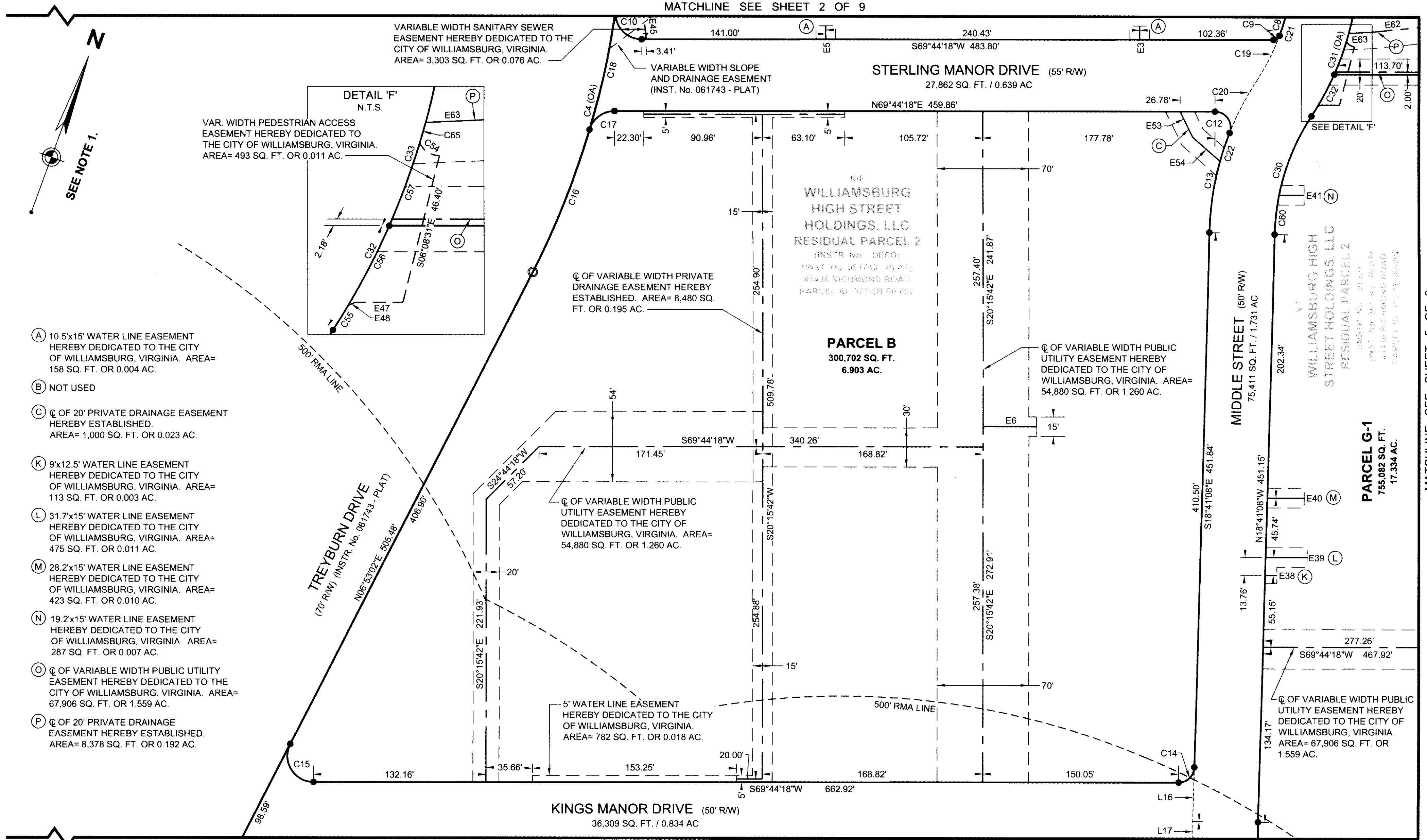
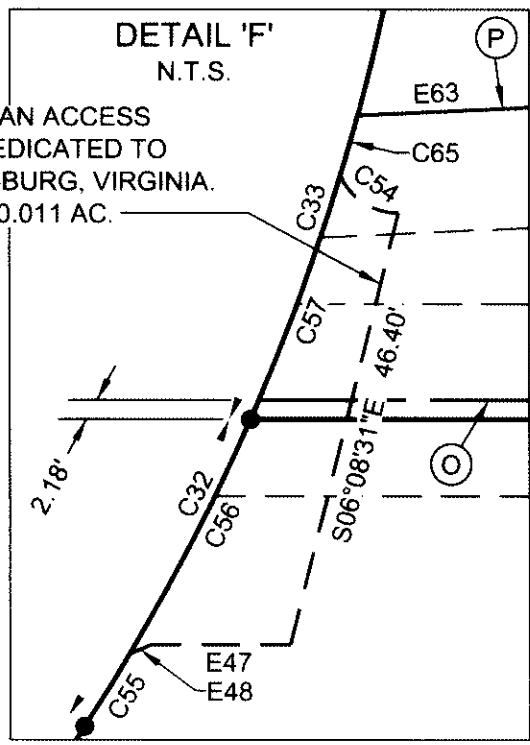


#071835

MATCHLINE SEE SHEET 2 OF 9



SEE NOTE 1.



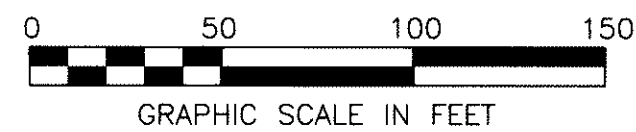
- (A) 10.5'x15' WATER LINE EASEMENT HEREBY DEDICATED TO THE CITY OF WILLIAMSBURG, VIRGINIA. AREA= 158 SQ. FT. OR 0.004 AC.
- (B) NOT USED
- (C) Q OF 20' PRIVATE DRAINAGE EASEMENT HEREBY ESTABLISHED. AREA= 1,000 SQ. FT. OR 0.023 AC.
- (K) 9'x12.5' WATER LINE EASEMENT HEREBY DEDICATED TO THE CITY OF WILLIAMSBURG, VIRGINIA. AREA= 113 SQ. FT. OR 0.003 AC.
- (L) 31.7'x15' WATER LINE EASEMENT HEREBY DEDICATED TO THE CITY OF WILLIAMSBURG, VIRGINIA. AREA= 475 SQ. FT. OR 0.011 AC.
- (M) 28.2'x15' WATER LINE EASEMENT HEREBY DEDICATED TO THE CITY OF WILLIAMSBURG, VIRGINIA. AREA= 423 SQ. FT. OR 0.010 AC.
- (N) 19.2'x15' WATER LINE EASEMENT HEREBY DEDICATED TO THE CITY OF WILLIAMSBURG, VIRGINIA. AREA= 287 SQ. FT. OR 0.007 AC.
- (O) Q OF VARIABLE WIDTH PUBLIC UTILITY EASEMENT HEREBY DEDICATED TO THE CITY OF WILLIAMSBURG, VIRGINIA. AREA= 67,906 SQ. FT. OR 1.559 AC.
- (P) Q OF 20' PRIVATE DRAINAGE EASEMENT HEREBY ESTABLISHED. AREA= 8,378 SQ. FT. OR 0.192 AC.

MATCHLINE SEE SHEET 6 OF 9

SEE SHEET 1 OF 9 NOTES & CERTIFICATIONS
SEE SHEET 9 OF 9 FOR CURVE & LINE TABLES

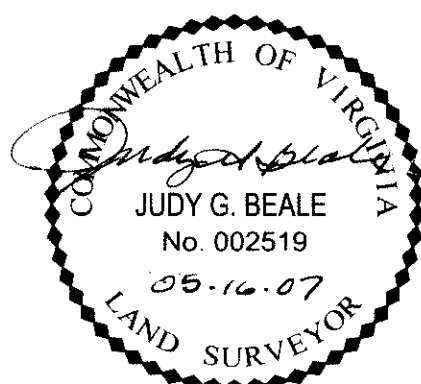
LEGEND

- IP(S) IRON PIN TO BE SET
- IP(F) IRON PIN FOUND
- NAIL(S) NAIL TO BE SET
- ⊕ NAIL(F) NAIL FOUND
- PIPE(F) IRON PIPE FOUND



VIRGINIA:

071835



IN THE CLERK'S OFFICE OF THE CIRCUIT COURT OF THE CITY OF WILLIAMSBURG, VIRGINIA ON THIS 21 DAY OF June, 2007, THIS PLAT WAS RECEIVED AND ADMITTED TO RECORD IN MAP BOOK _____ AT PAGE _____ AT 2:15 p.m.

TESTE: Chris Hallman CLERK

CLERK

RESUBDIVISION
OF PROPERTY OF
WILLIAMSBURG HIGH STREET HOLDINGS, LLC
RESIDUAL PARCEL 2
AND
CITY OF WILLIAMSBURG, VIRGINIA
PARCELS C2, G2 & G3
(INSTR. No. 061743)
WILLIAMSBURG, VIRGINIA



WOOLPERT, INC.
415 PORT CENTRE PARKWAY
SUITE 101
PORTSMOUTH, VA 23704-4924
TEL: 757.399.6882 FAX: 757.399.6869

DES. N/A	JOB NO. 62896.04
DRN. RDA	SCALE 1"=50'
CKD. JGB	DATE 9-25-06
SHEET NO. 4 OF 9	
FILE NO. Prelimsub2-sh4.dwg	

REVISED: 05-11-07 - CITY COMMENTS
REVISED: 04-27-07 - CITY COMMENTS
REVISED: 04-19-07 - PARCEL C1 & C2-A
REVISED: 03-30-07 - PARCEL G-1

MATCHLINE SEE SHEET 5 OF 9