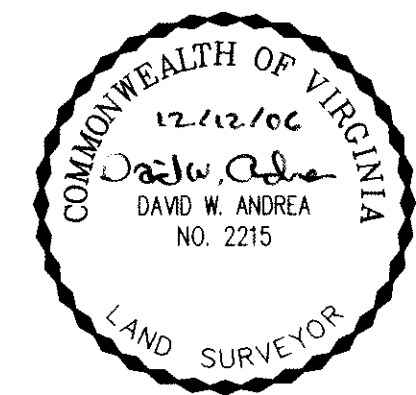
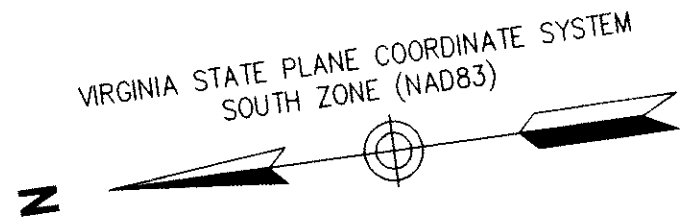


#070912



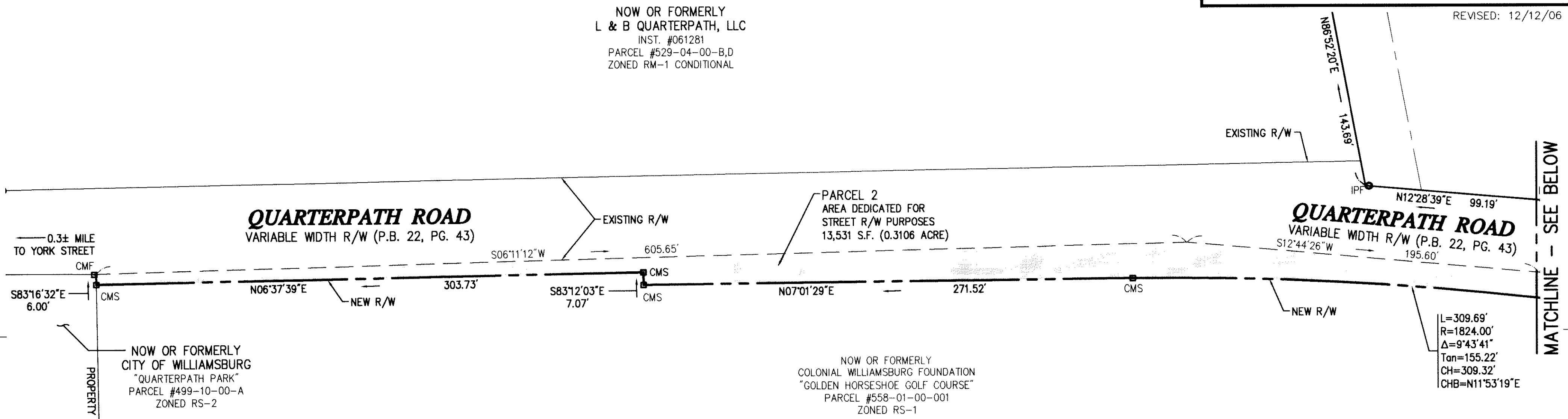
PLAT SHOWING DEDICATION OF  
PUMP STATION LOT AND RIGHT OF WAY  
OF THE PROPERTIES OF  
**COLONIAL WILLIAMSBURG  
FOUNDATION**  
CITY OF WILLIAMSBURG, VIRGINIA

DATE: 11/27/06    SHEET 2 OF 2    SCALE: 1"=40'  
PROJECT NO: 31980.04    DRAWN BY: DWP

**VHB** Vanasse Hangen Brustlin, Inc.  
Transportation Land Development Environmental Services  
11832 Rock Landing Drive, Suite 207  
Newport News, Virginia 23606-4231  
(757) 873-3386 • FAX (757) 873-0757

REVISED: 12/12/06

NOW OR FORMERLY  
L & B QUARTERPATH, LLC  
INST. #061281  
PARCEL #529-04-00-B,D  
ZONED RM-1 CONDITIONAL

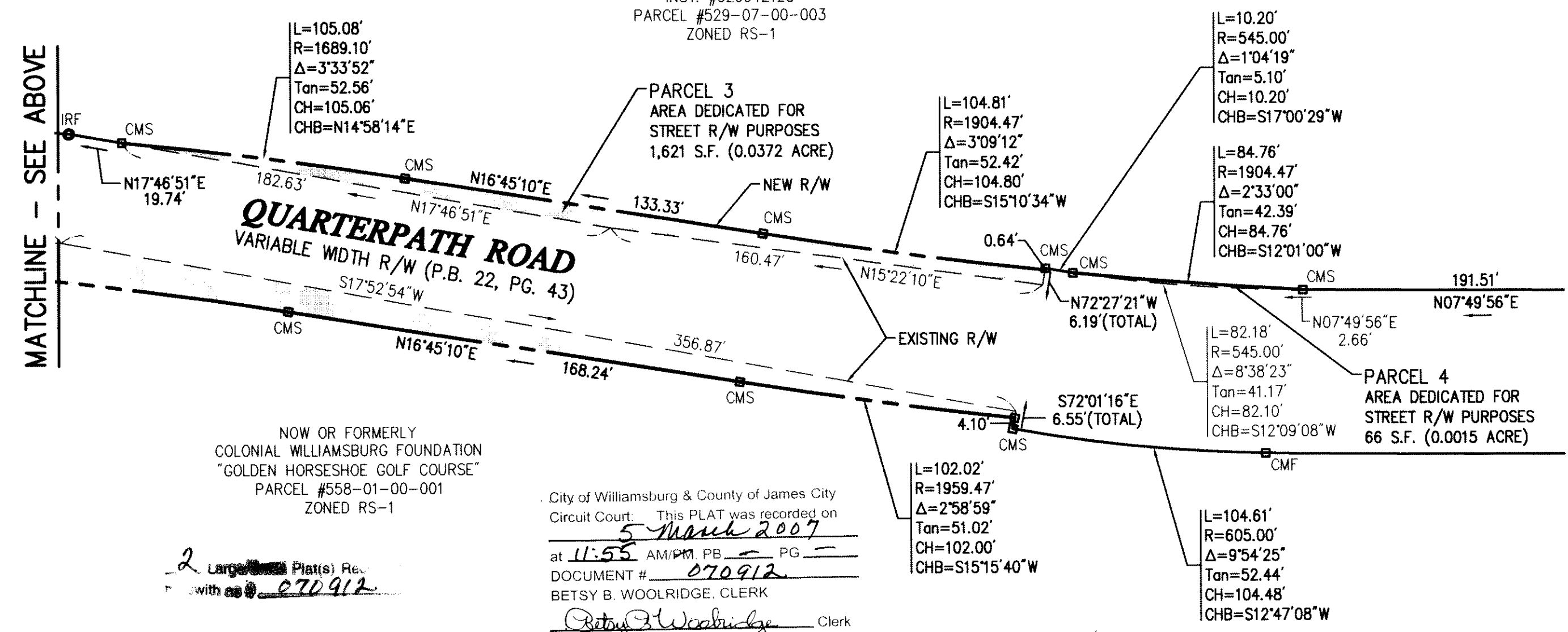


AREA DEDICATED FOR  
STREET R/W PURPOSES



MATCHLINE - SEE ABOVE

MATCHLINE - SEE BELOW



Approved:  
City of Williamsburg  
BY: Red T. Neuh  
PLAT APPROVING AGENT  
DATE: 3/2/07

State Of Virginia  
City Of Williamsburg  
IN THE CLERK'S OFFICE OF THE CIRCUIT COURT FOR THE CITY OF WILLIAMSBURG AND  
COUNTY OF JAMES CITY, VIRGINIA THIS 5 DAY OF March, 2007.  
THIS MAP WAS PRESENTED AND ADMITTED TO RECORD AS THE LAW DIRECTS AS  
INSTRUMENT NUMBER 070912  
TESTE: Betsy B. Woolridge CLERK  
BY: Claudia H. Brinkley, Dep. Clerk

2 Large Plats Rec.  
with 070912

City of Williamsburg & County of James City  
Circuit Court This PLAT was recorded on  
5 March 2007  
at 11:55 AM/PM, PG. 2  
DOCUMENT # 070912  
BETSY B. WOOLRIDGE, CLERK  
Betsy B. Woolridge Clerk