

#070035408

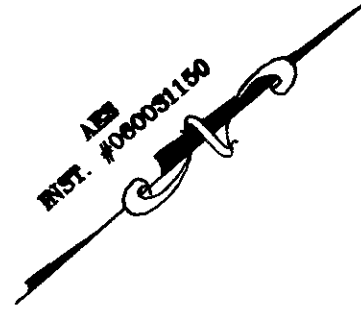
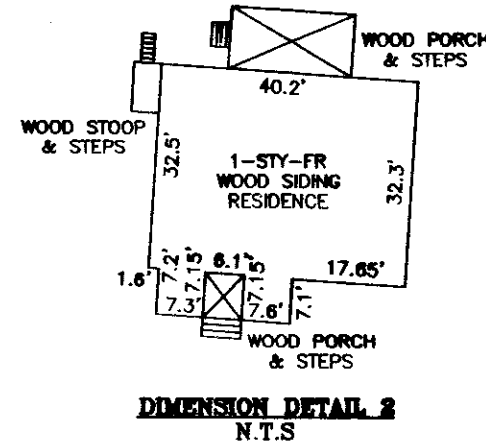
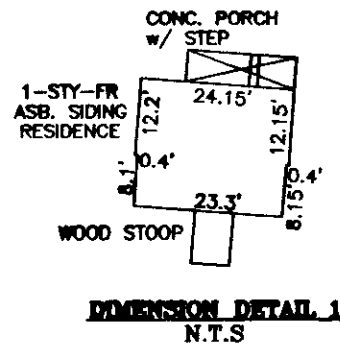
PLAT SHOWING A SUBDIVISION &
PROPERTY LINE EXTINGUISHMENTS
ON THE PROPERTIES OF
JAMES CITY COUNTY

BEING A PARCEL OF LAND CONTAINING
4,127,223± SQ. FT.
94.7480± ACRES
JAMESTOWN DISTRICT
JAMES CITY COUNTY, VIRGINIA

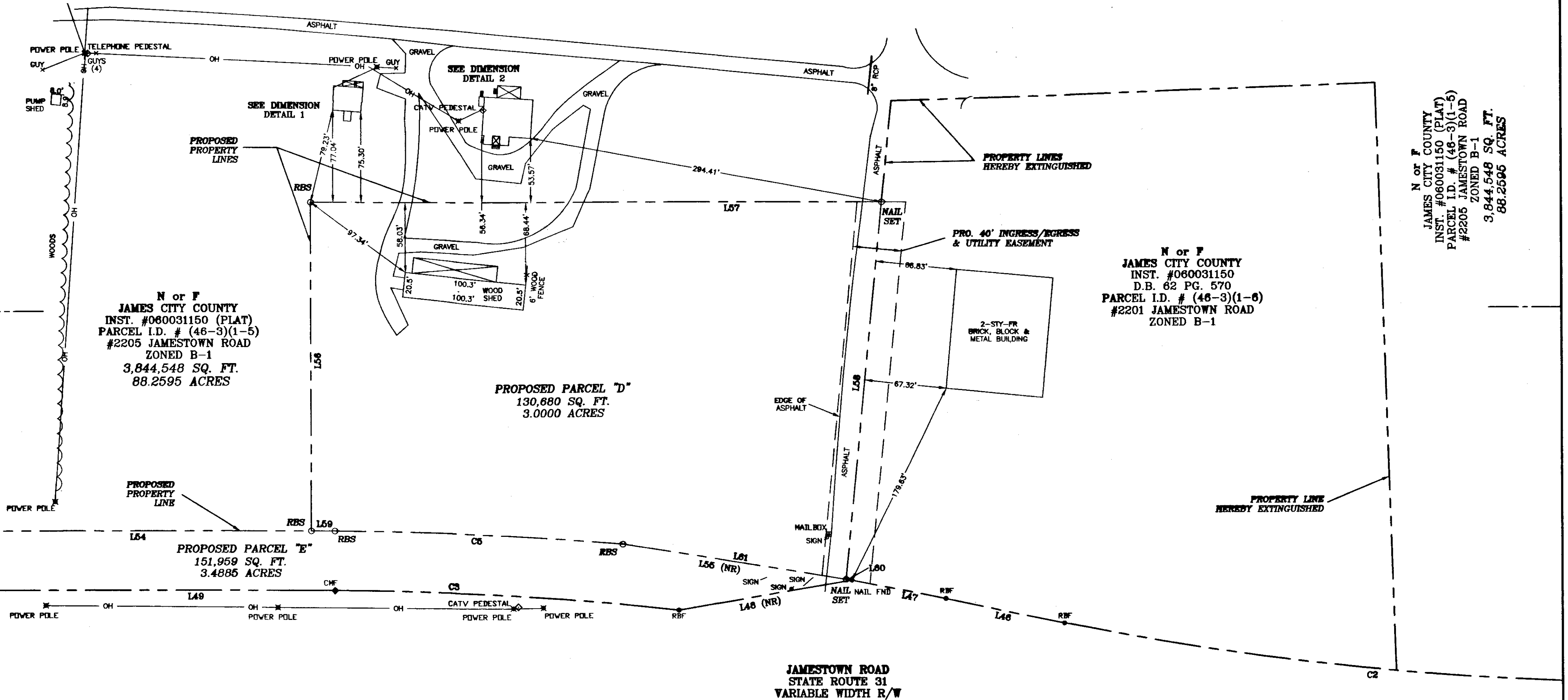
A.D.P.A. A.D. POTTS & ASSOCIATES, INC.
11524 JEFFERSON AVENUE
NEWPORT NEWS, VIRGINIA 23601

SCALE: 1"=60' SEPTEMBER 5, 2007
REV: 12/11/07

SHEET 3 OF 3

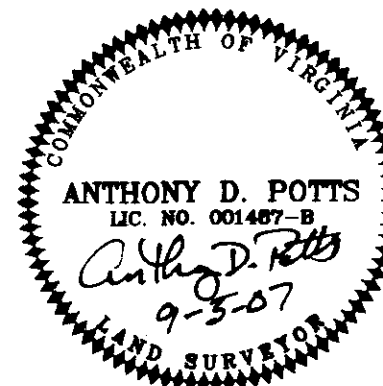


N or F
JAMES CITY COUNTY
INST. #060031150 (PLAT)
PARCEL I.D. # (46-3)(1-5)
#2205 JAMESTOWN ROAD
ZONED B-1
3,844,548 SQ. FT.
88.2595 ACRES



N or F
JAMES CITY COUNTY
INST. #060031150 (PLAT)
PARCEL I.D. # (46-3)(1-5)
#2205 JAMESTOWN ROAD
ZONED B-1
3,844,548 SQ. FT.
88.2595 ACRES

N or F
JAMES CITY COUNTY
INST. #060031150
D.B. 62 PG. 570
PARCEL I.D. # (46-3)(1-6)
#2201 JAMESTOWN ROAD
ZONED B-1



City of Williamsburg & County of James City
Circuit Court. This PLAT was recorded on
27 December 2007
at 4:00 AM/PM. PB. PG.
DOCUMENT # 070035408
BETSY B. WOOLRIDGE, CLERK
Betsy B. Woolridge Clerk

3 Large/Small Plat(s)
herewith as # 070035408