

#070035407

PLAT SHOWING A BOUNDARY LINE ADJUSTMENT & PROPERTY LINE EXTINGUISHMENTS ON THE PROPERTIES OF JAMES CITY COUNTY

BEING A PARCEL OF LAND CONTAINING 1,615,279 SQ. FT. 37.0817 ACRES

JAMES CITY COUNTY, VIRGINIA

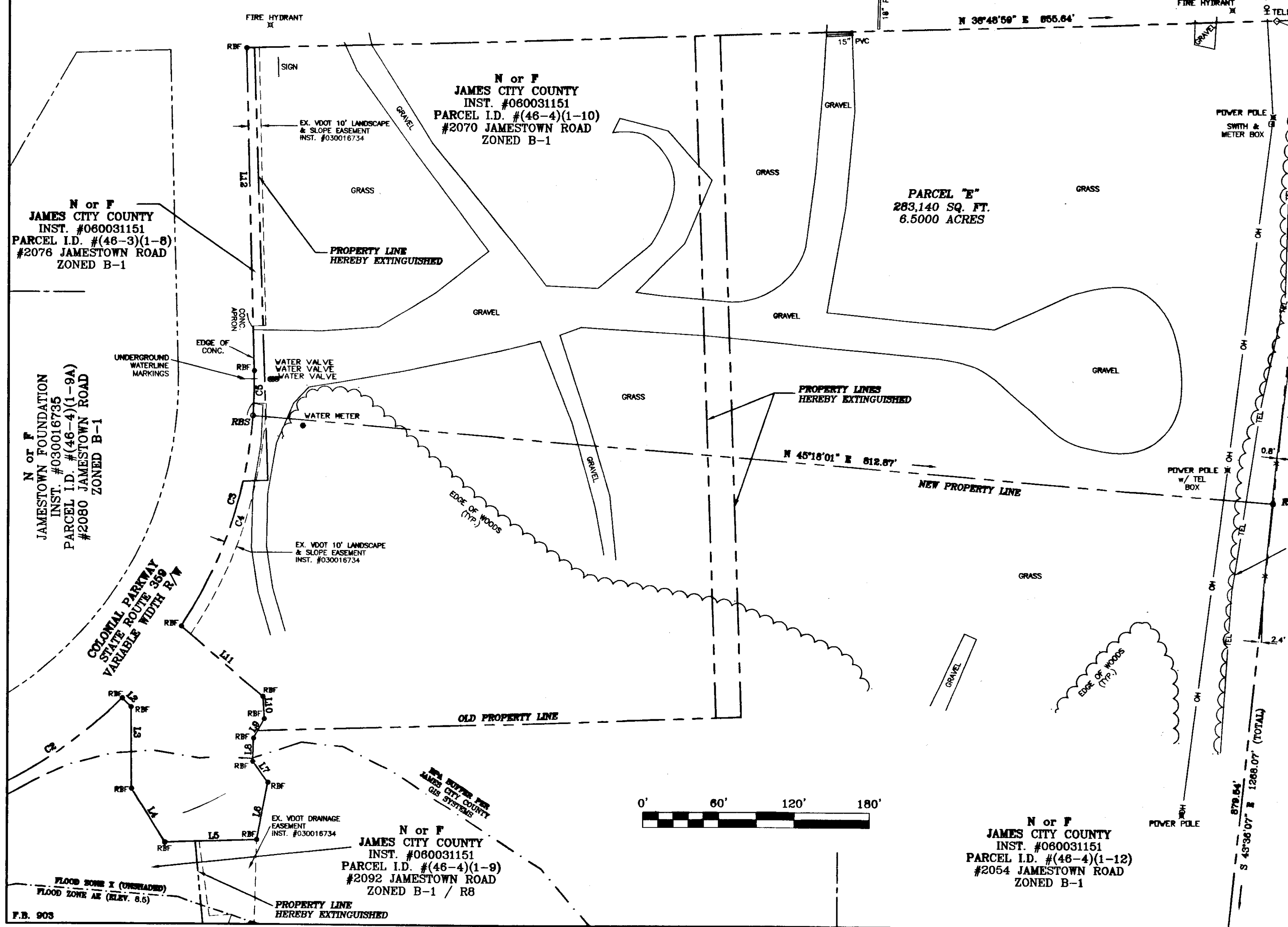
ADPA A.D. POTTS & ASSOCIATES, INC. 11524 JEFFERSON AVENUE NEWPORT NEWS, VIRGINIA 23601

SCALE: 1"=60'

SEPTEMBER 5, 2007 REV: 12/11/07

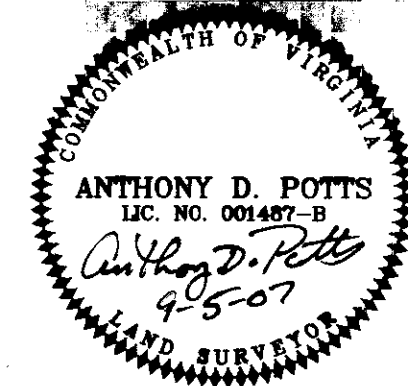
SHEET 3 OF 3

JAMESTOWN ROAD STATE ROUTE 31 VARIABLE WIDTH R/W



N or F DOMENIC J. & CAROL G. MAGLIERI (TRUSTEES) D.B. 491 PG. 269 PARCEL I.D. #(46-4)(1-16) ZONED R8

City of Williamsburg & County of James City Circuit Court: This PLAT was recorded on 27 November 2007 at 3:55 AM/PM, PG. DOCUMENT # 070035407 BETSY B. WOOLRIDGE, CLERK



SURVEYOR'S CERTIFICATE I HEREBY CERTIFY THAT TO THE BEST OF MY KNOWLEDGE AND BELIEF, THIS PLAT COMPLIES WITH ALL OF THE REQUIREMENTS OF THE BOARD OF SUPERVISORS AND ORDINANCES OF THE COUNTY OF JAMES CITY, VIRGINIA, REGARDING THE PLATTING OF SUBDIVISIONS WITHIN THE COUNTY.

9-5-07 DATE ANTHONY D. POTTS L.S.

3 Large/Small Plat(s) Recorded herewith as # 070035407

JAMESTOWN-BLA.DWG JOB #07-191 FILE NO. 10-1150



F.B. 905