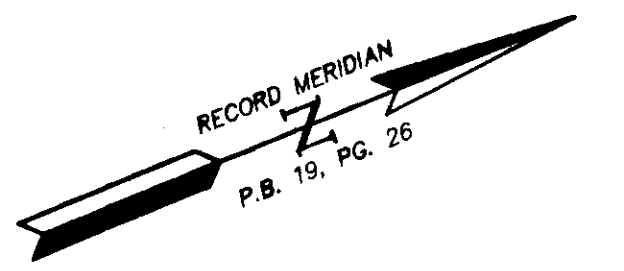
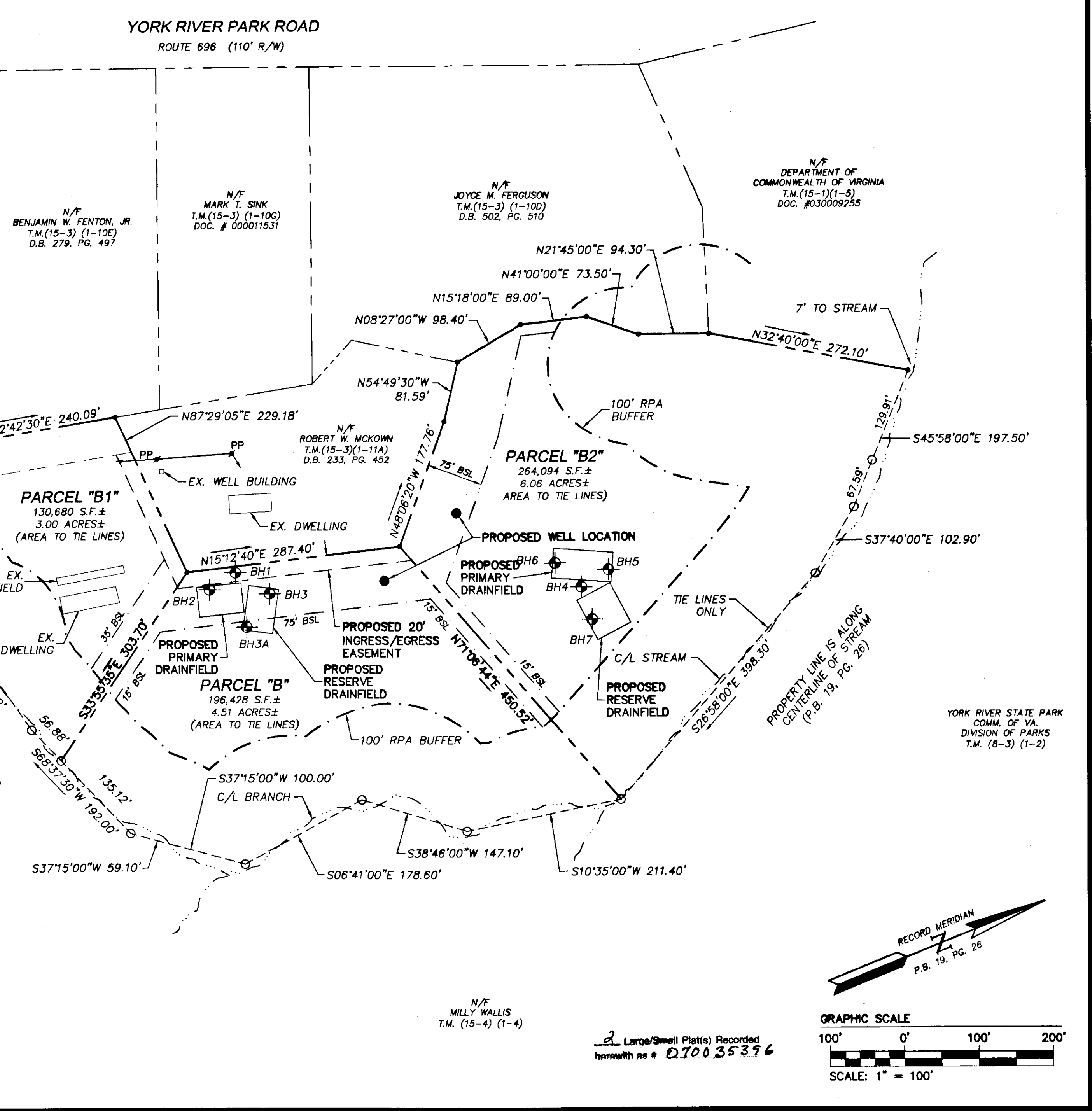
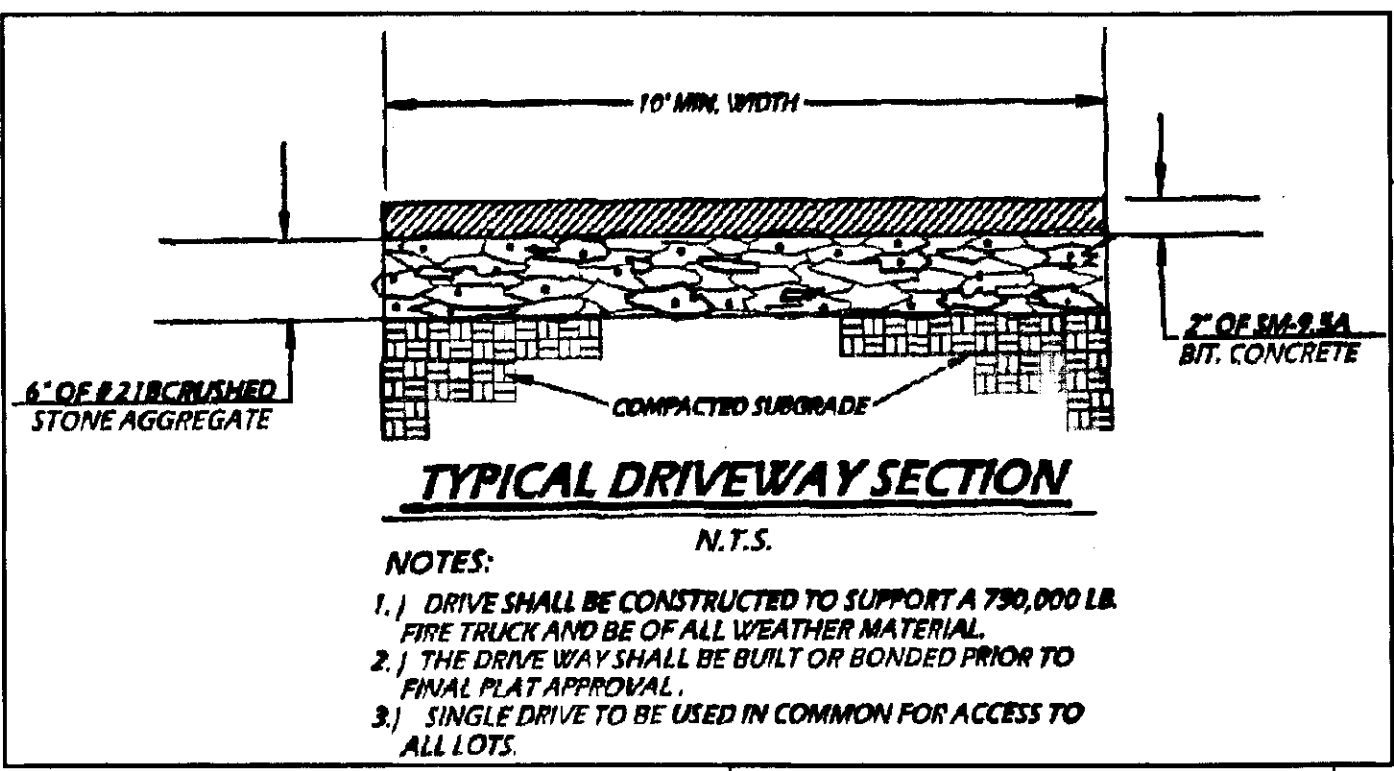


#0700.35.396



2 Large/Small Plat(s) Recorded
 herewith as # **D700.35.396**

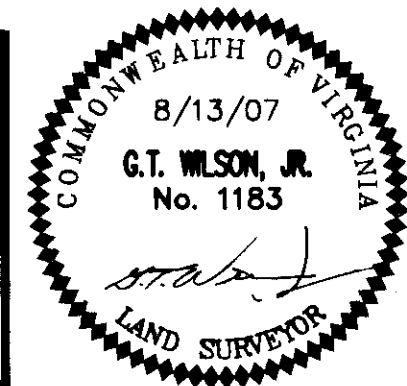
S:\Jobs\9143\00-Wanner Subdivision\dwg\Plats\914301SUBD PARCEL B SH2.dwg, 12/19/2007 2:26:14 PM, Tony Taylor

CONSULTING ENGINEERS
 WILLIAMSBURG • RICHMOND • GLOUCESTER

5248 Olde Towne Road, Suite 1
 Williamsburg, Virginia 23188
 (757) 253-0040
 Fax (757) 220-8994

PLAT OF SUBDIVISION
BEING A PART OF RICHNECK FARM
 OWNED BY:
JUDITH JONES-WANNER

STONEHOUSE DISTRICT JAMES CITY COUNTY VIRGINIA



No.	DATE	REVISION / COMMENT / NOTE	REVISOR	REVIEWED BY

City of Williamsburg & County of James City
 Circuit Court: This PLAT was recorded on
27 December 2007
 at **1:35** AM/PM, PG.
 DOCUMENT # **D700.35.396**
 BETSY B. WOOLRIDGE, CLERK
Betsy B. Woolridge Clerk

Designed AES	Drawn AWT
Scale 1"=100'	Date 8/13/07
Project No. 9143	
Drawing No. 2 of 2	