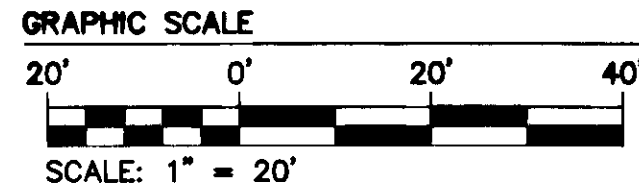


#070032865

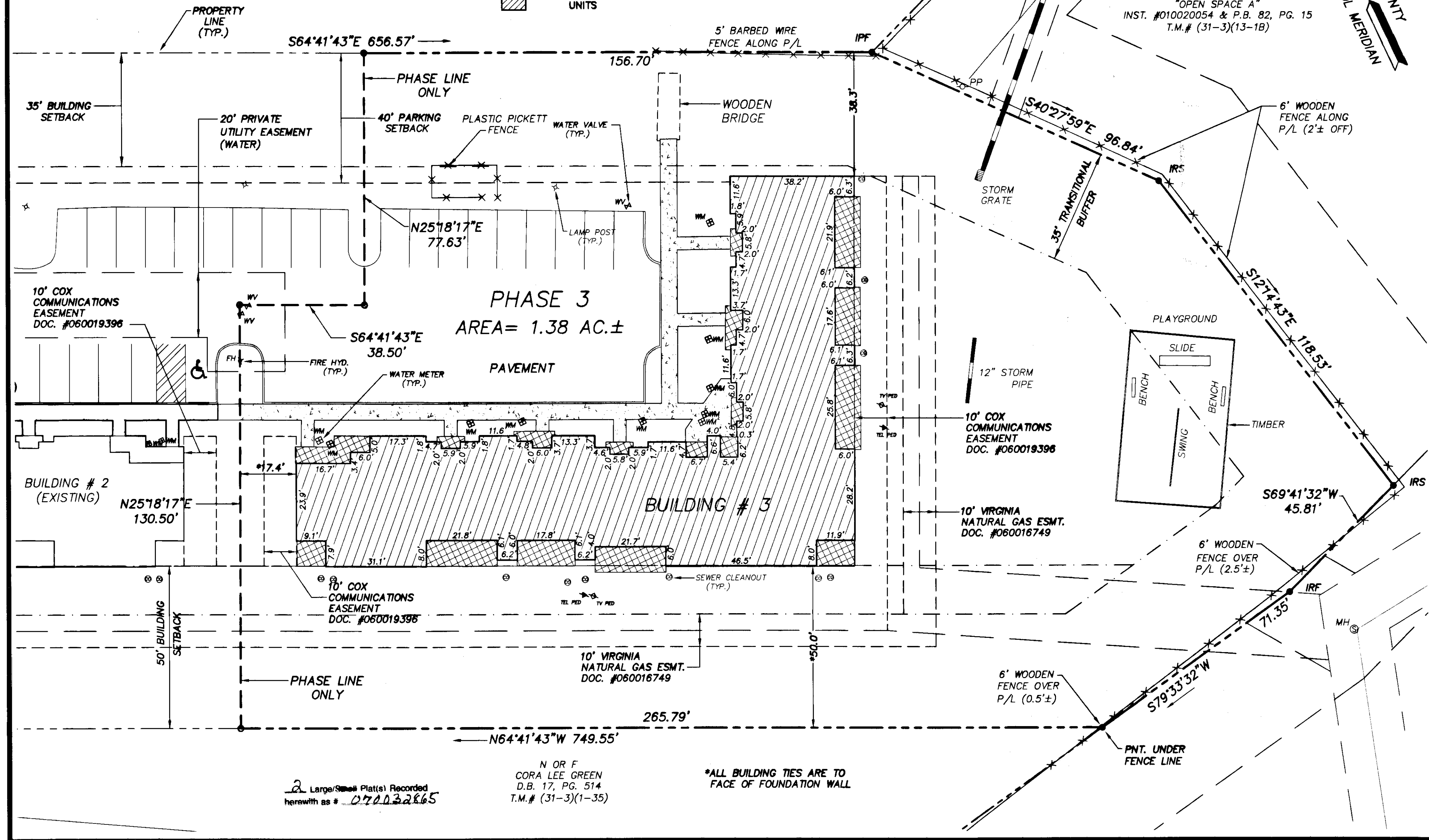


- PHASE 3 LEGEND**
- COMMON ELEMENT
 - LIMITED COMMON ELEMENT
 - UNITS

N OR F
LONGHILL GROVE, L.P.
INST. #030010239
P.B. 32, PG. 81
T.M.# (31-3)(1-12)

N OR F
MULBERRY PLACE HOMEOWNERS ASSOC.
"OPEN SPACE A"
INST. #010020054 & P.B. 82, PG. 15
T.M.# (31-3)(13-18)

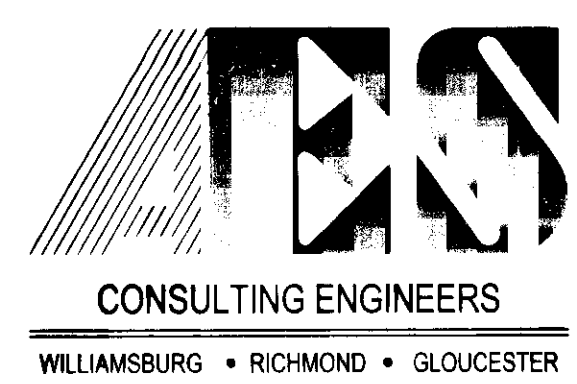
JAMES CITY COUNTY
GEODETIC CONTROL MERIDIAN



2 Large/Small Plats Recorded herewith as # 070032865

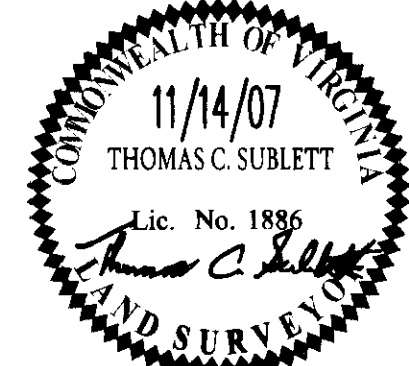
N OR F
CORA LEE GREEN
D.B. 17, PG. 514
T.M.# (31-3)(1-35)

*ALL BUILDING TIES ARE TO FACE OF FOUNDATION WALL



5248 Olde Towne Road, Suite 1
Williamsburg, Virginia 23188
(757) 253-0040
Fax (757) 220-8994

"EXHIBIT B"
PLAT OF CONDOMINIUM
WAR HILL GREEN
CONDOMINIUM
PHASE 3
POWHATAN DISTRICT COUNTY OF JAMES CITY VIRGINIA



No.	DATE	REVISION / COMMENT / NOTE

City of Williamsburg & County of James City
Circuit Court: This PLAT was recorded on
3 December 2007
at 10:28 AM PM, PG. 5
DOCUMENT # 070032865
BETSY B. WOOLRIDGE, CLERK
Betsy B. Woolridge Clerk

Designed AES	Drawn JFS
Scale 1"=20'	Date 11/14/07
Project No. 9427	
Drawing No. 2 of 2	