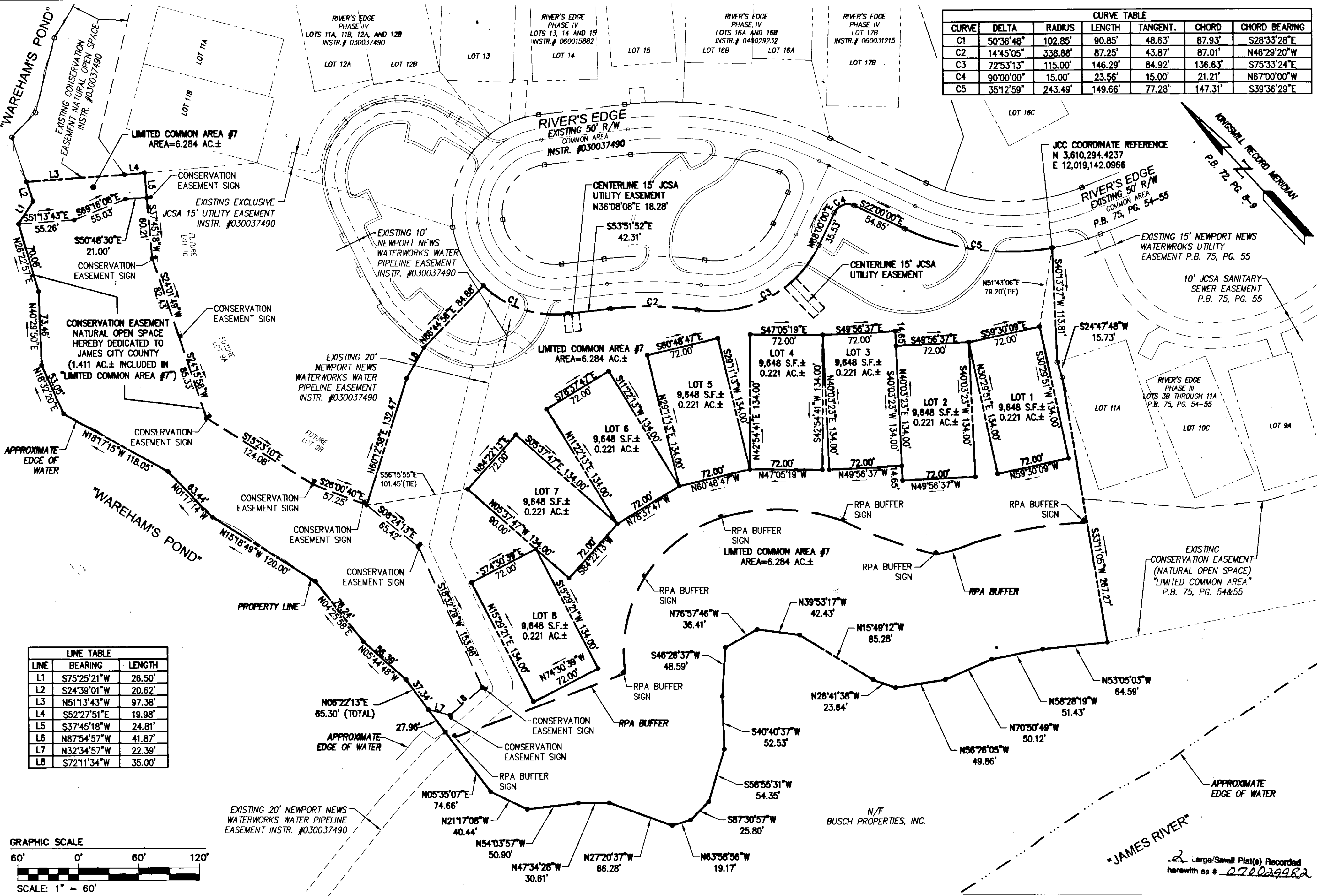
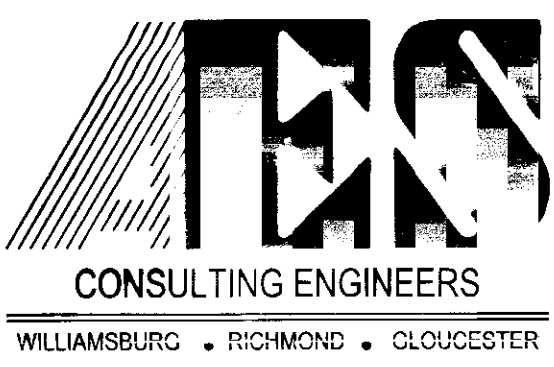
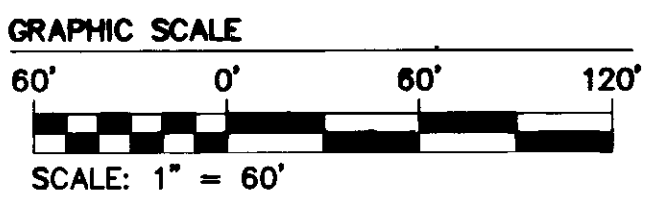


070029982

CURVE	DELTA	RADIUS	LENGTH	TANGENT.	CHORD	CHORD BEARING
C1	50°36'48"	102.85'	90.85'	48.63'	87.93'	S28°33'28"E
C2	14°45'05"	338.88'	87.25'	43.87'	87.01'	N46°29'20"W
C3	72°53'13"	115.00'	146.29'	84.92'	136.63'	S75°33'24"E
C4	90°00'00"	15.00'	23.56'	15.00'	21.21'	N67°00'00"W
C5	35°12'59"	243.49'	149.66'	77.28'	147.31'	S39°36'29"E

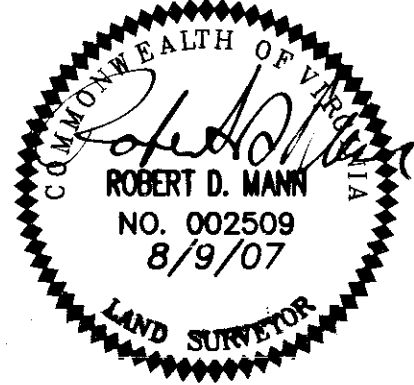


LINE	BEARING	LENGTH
L1	S75°25'21"W	26.50'
L2	S24°39'01"W	20.62'
L3	N51°13'43"E	97.38'
L4	S52°27'51"E	19.98'
L5	S37°45'18"W	24.81'
L6	N87°54'57"W	41.87'
L7	N32°34'57"W	22.39'
L8	S72°11'34"W	35.00'



5248 Olde Towne Road, Suite 1
Williamsburg, Virginia 23188
(757) 253-0040
Fax (757) 220-8994

PLAT OF SUBDIVISION
RIVER'S EDGE
PHASE IV
LOTS 1 THROUGH 8
OWNER/DEVELOPER: BUSCH PROPERTIES, INC.
ROBERTS DISTRICT JAMES CITY COUNTY VIRGINIA



No.	DATE	REVISION / COMMENT / NOTE	BY
1	9/12/07	REVISED PER COUNTY COMMENTS	RDM

City of Williamsburg & County of James City
Circuit Court: This PLAT was recorded on
16 October 2007
at 3:54 AM/PM, PG.
DOCUMENT # 070029982
BETSY B. WOOLRIDGE, CLERK
Betsy B. Woolridge Clerk

Large/Small Plat(s) Recorded
herewith as # 070029982

Designed	Drawn
AES	MLH
Scale	Date
1"=60'	8/9/07
Project No.	
7753-5-4	
Drawing No.	
2 OF 2	