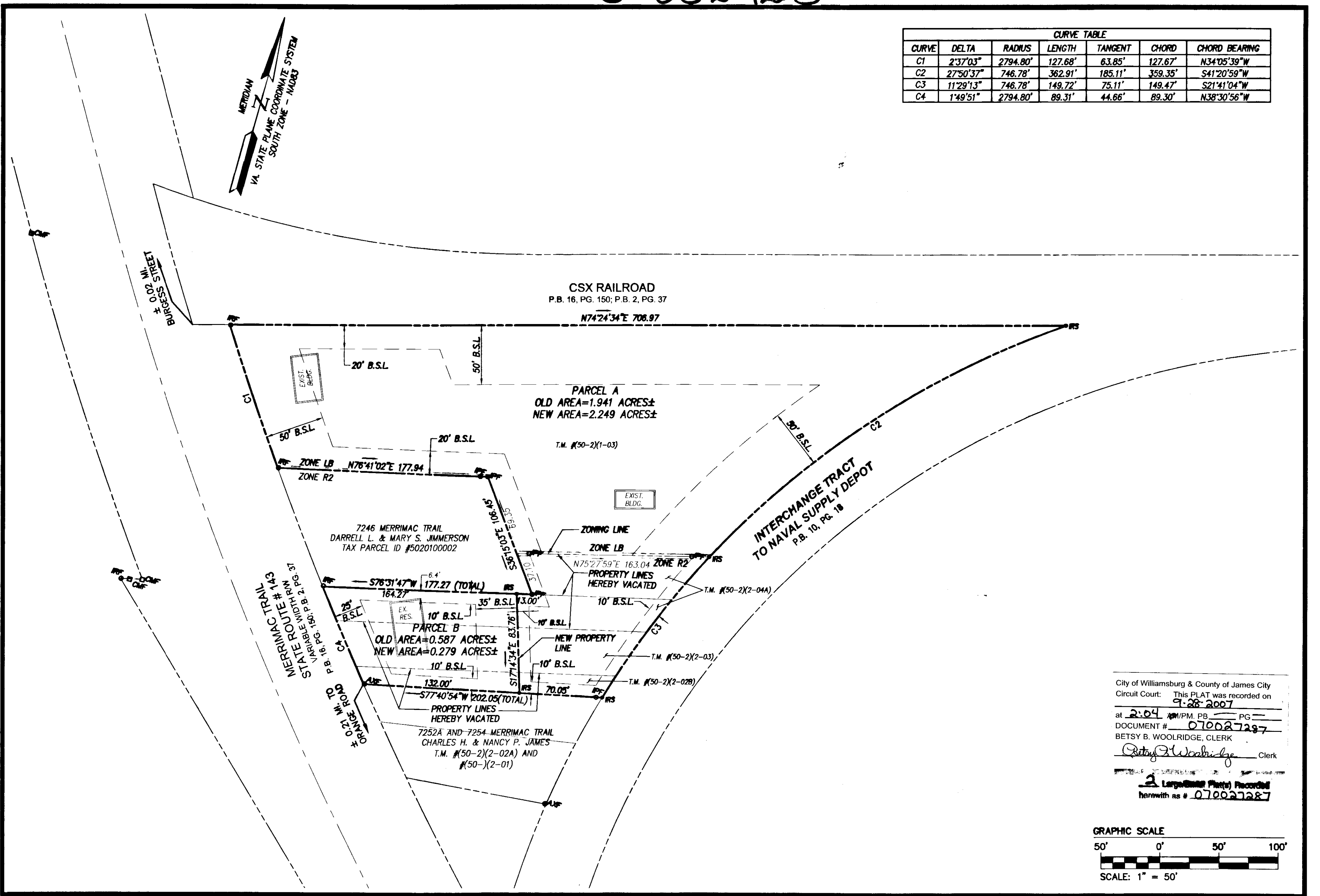
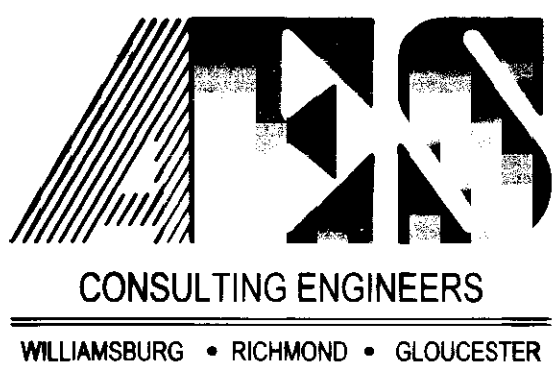
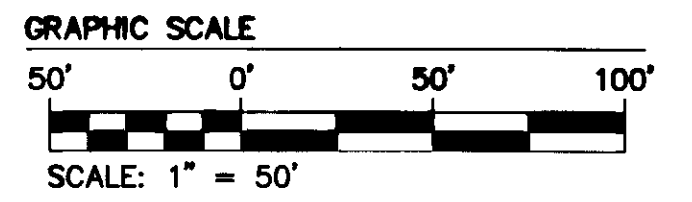


070027287

CURVE TABLE						
CURVE	DELTA	RADIUS	LENGTH	TANGENT	CHORD	CHORD BEARING
C1	2°37'03"	2794.80'	127.68'	63.85'	127.67'	N34°05'39"W
C2	27°50'37"	746.78'	362.91'	185.11'	359.35'	S41°20'59"W
C3	11°29'13"	746.78'	149.72'	75.11'	149.47'	S21°41'04"W
C4	1°49'51"	2794.80'	89.31'	44.66'	89.30'	N38°30'56"W

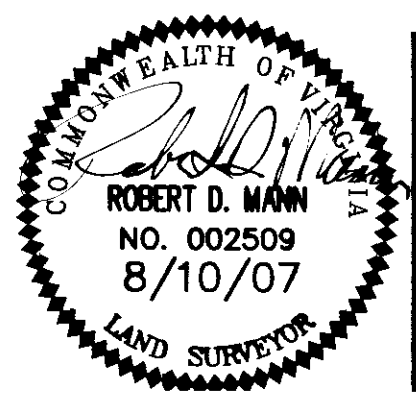


City of Williamsburg & County of James City  
 Circuit Court: This PLAT was recorded on  
 at 2:04 PM, PG. 1  
 DOCUMENT # 070027287  
 BETSY B. WOOLRIDGE, CLERK  
 Clerk  
 2 Large (8 1/2" x 11") Plans Recorded  
 herewith as # 070027287



5248 Olde Towne Road, Suite 1  
 Williamsburg, Virginia 23188  
 (757) 253-0040  
 Fax (757) 220-8994

PLAT OF  
 BOUNDARY LINE ADJUSTMENT  
 BETWEEN THE PROPERTIES OF  
 DONALD E. NEWSOM AND  
 HOWARD AMES, SR.  
 BERKELEY DISTRICT JAMES CITY COUNTY VIRGINIA



No.	DATE	REVISION / COMMENT / NOTE	REVISED BY	REVIEWED BY
1	8/10/07	REVISED PER COUNTY COMMENTS	RDM	

Designed AES	Drawn MLH
Scale 1"=50'	Date 5/7/07
Project No. 9852-00	
Drawing No. 2 OF 2	