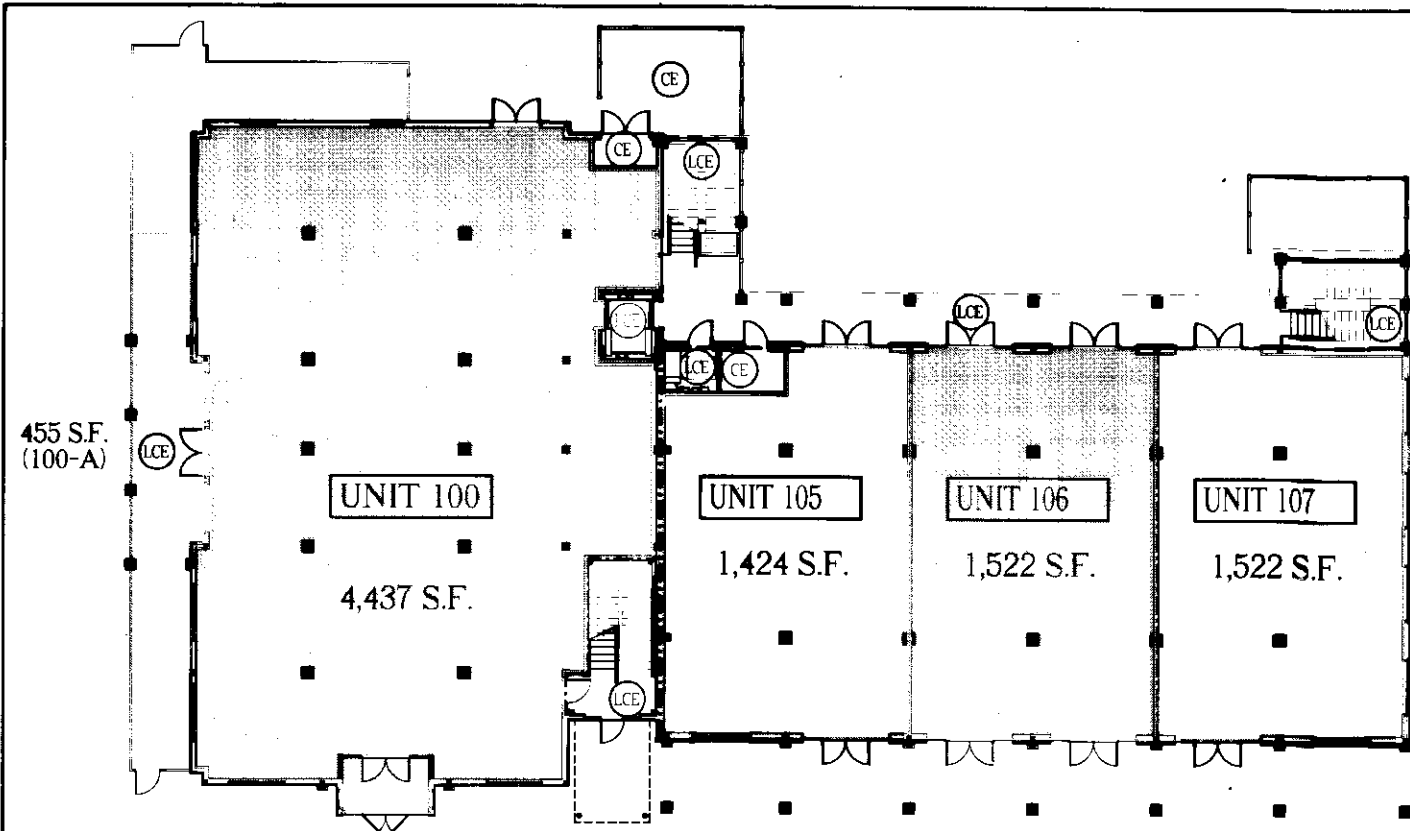
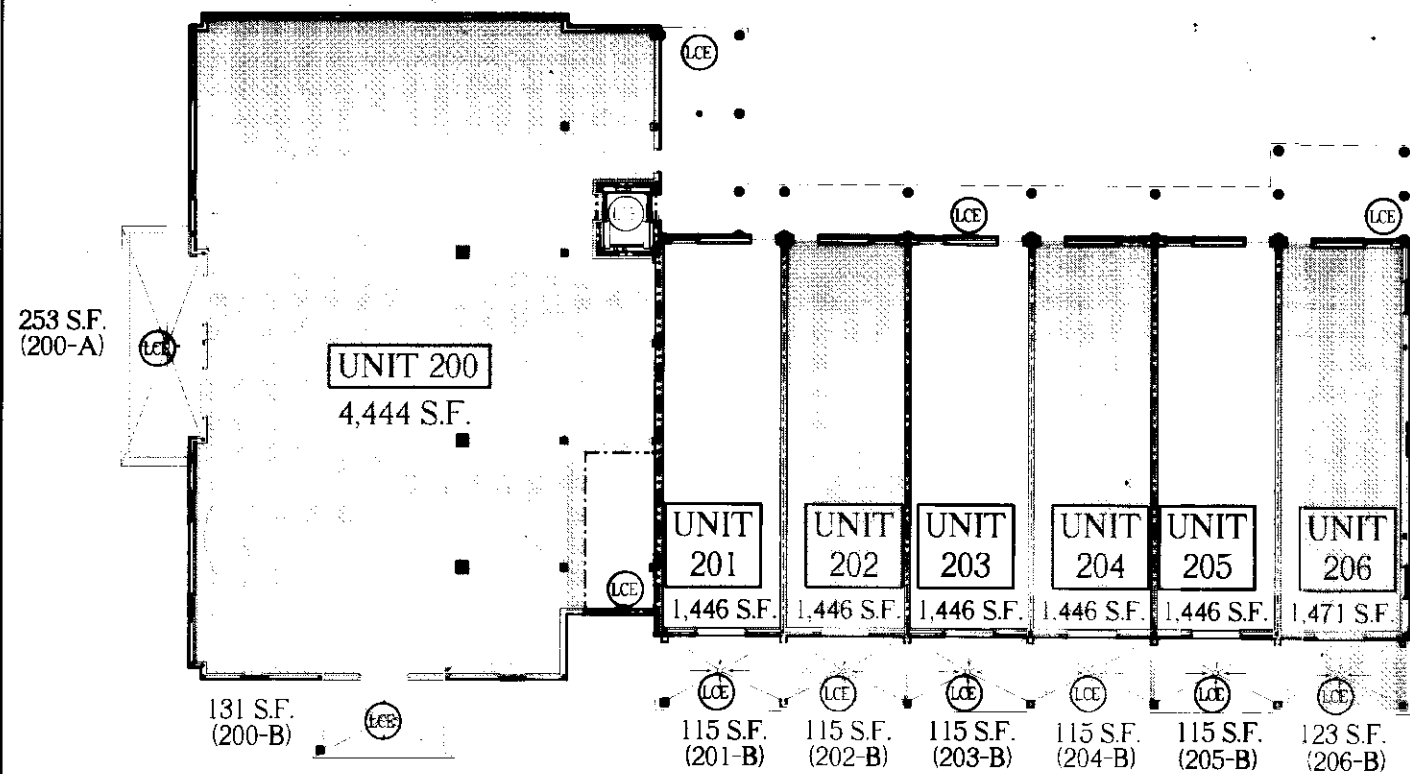


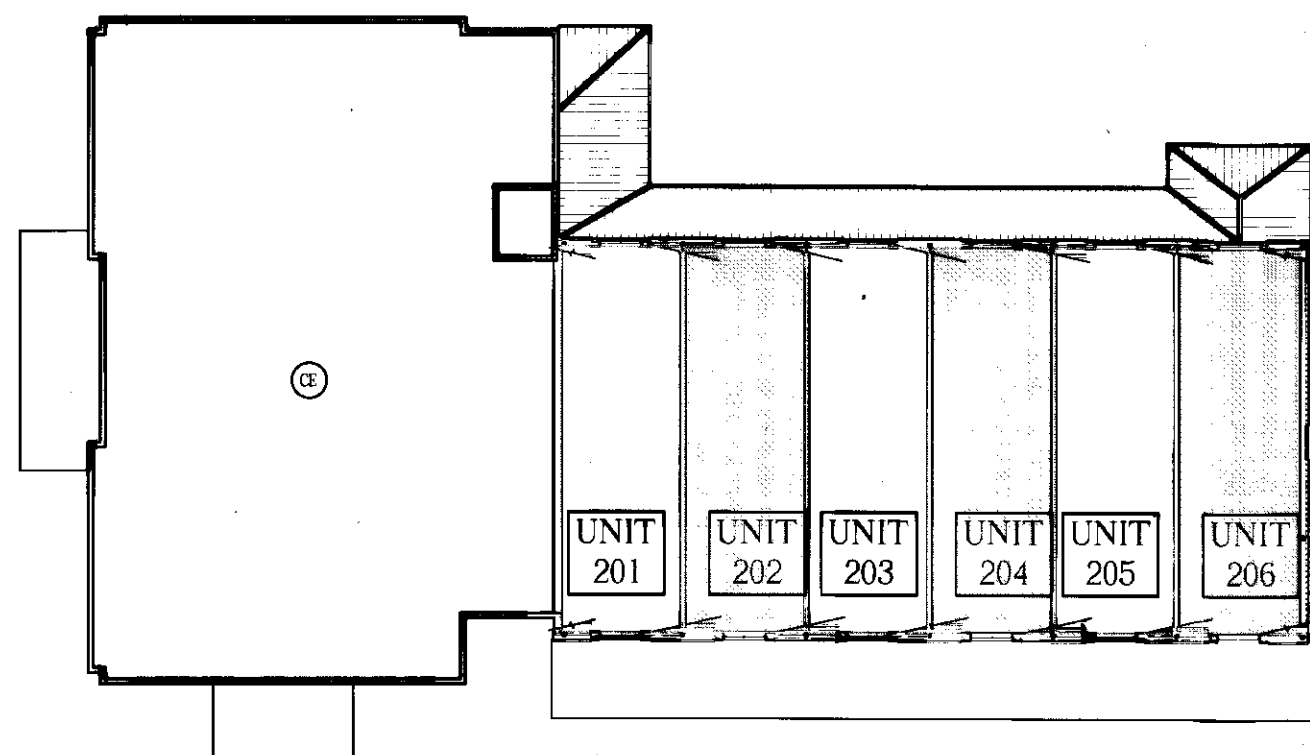
#070022888



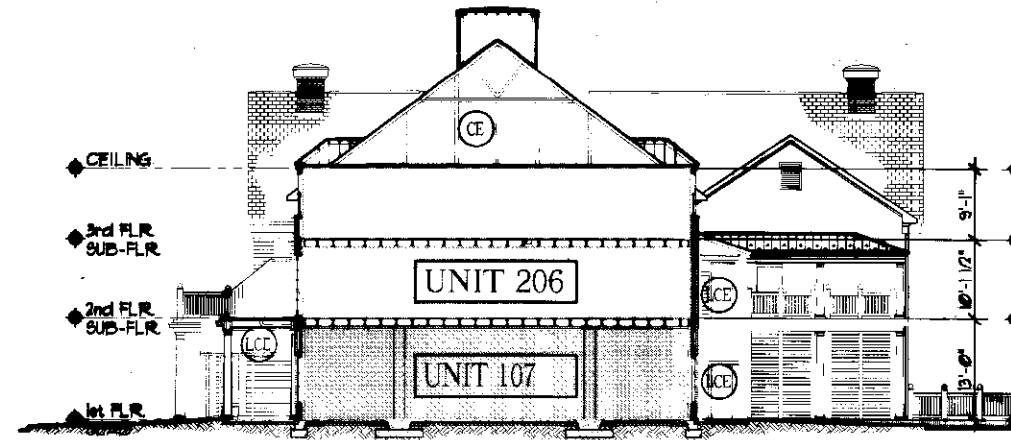
1 FIRST FLOOR PLAN
G1.01 SCALE: 1/16" = 1'-0"



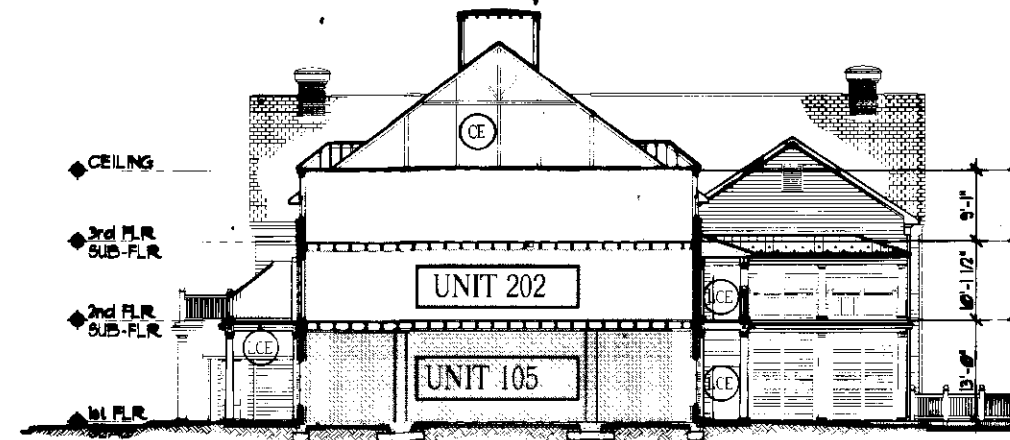
2 SECOND FLOOR PLAN
G1.01 SCALE: 1/16" = 1'-0"



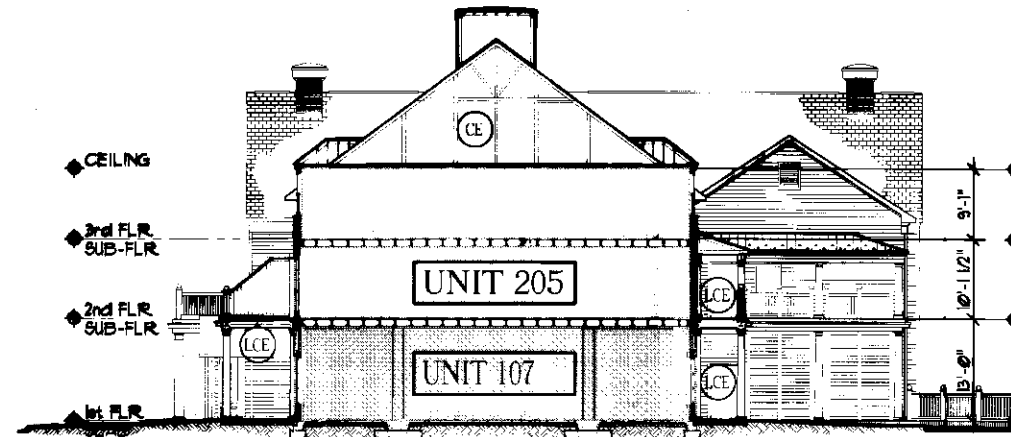
3 THIRD FLOOR PLAN
G1.01 SCALE: 1/16" = 1'-0"



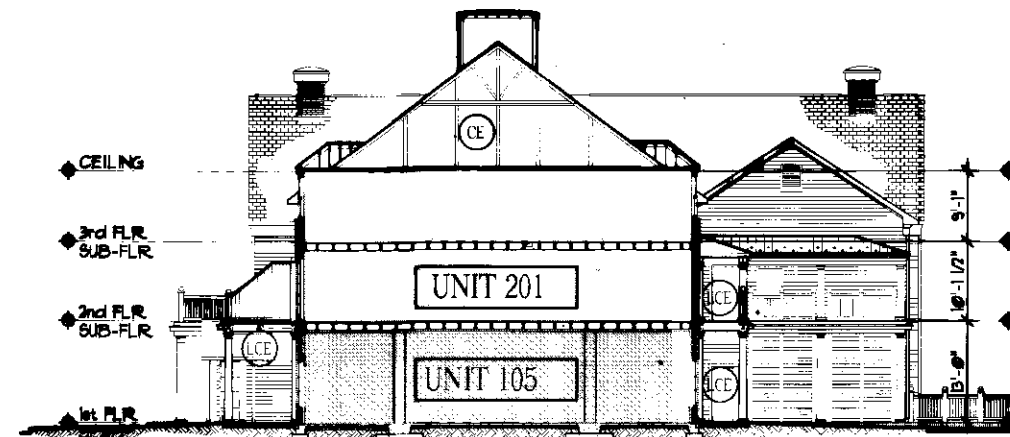
4 BUILDING SECTION
G1.01 SCALE: 1/16" = 1'-0"



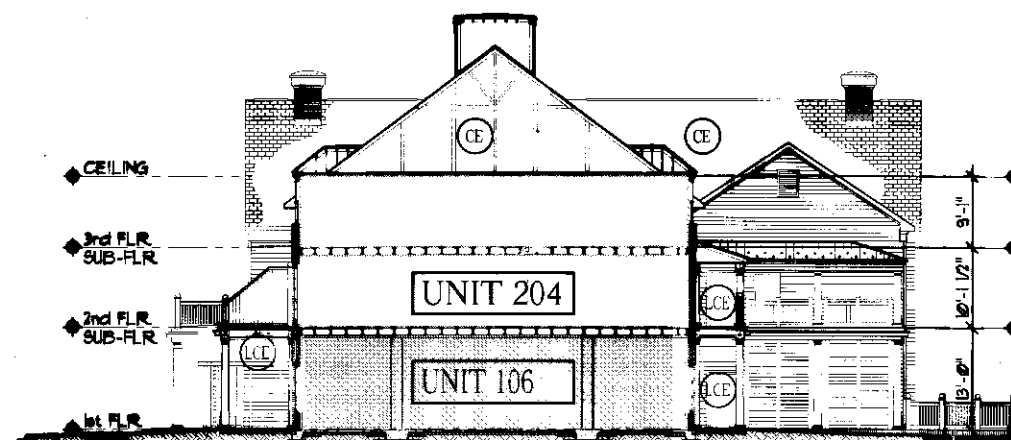
8 BUILDING SECTION
G1.01 SCALE: 1/16" = 1'-0"



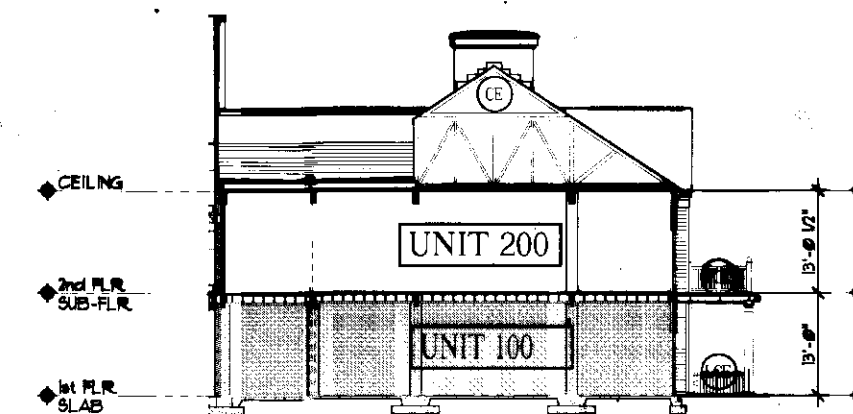
5 BUILDING SECTION
G1.01 SCALE: 1/16" = 1'-0"



9 BUILDING SECTION
G1.01 SCALE: 1/16" = 1'-0"



6 BUILDING SECTION
G1.01 SCALE: 1/16" = 1'-0"



10 BUILDING SECTION
G1.01 SCALE: 1/16" = 1'-0"

CE - COMMON ELEMENTS

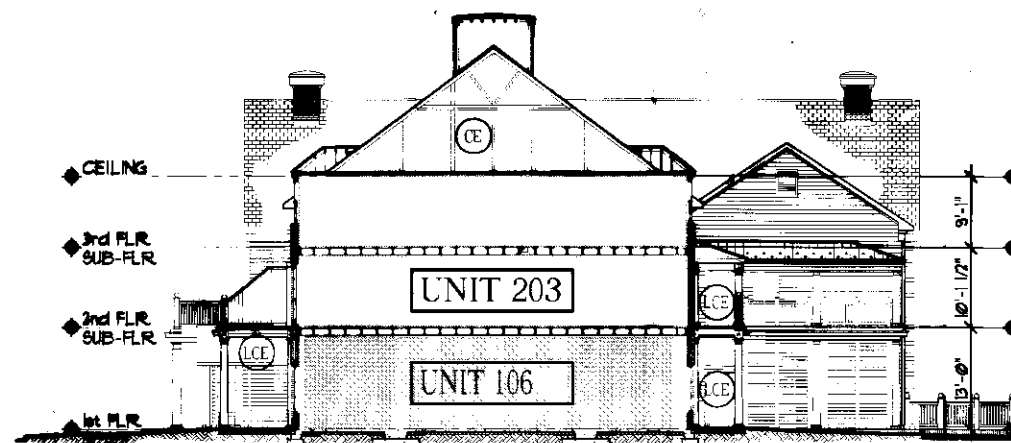
COMMON ELEMENT MEANS ALL PORTIONS OF THE CONDOMINIUM OTHER THAN THE UNITS AS SHOWN AND DESIGNATED HEREON AND DEFINED IN THE CONDOMINIUM INSTRUMENTS. REFERENCE IS HEREBY MADE TO THE CONDOMINIUM INSTRUMENTS FOR ADDITIONAL DEFINITIONS, REGULATIONS AND BUILDING RESTRICTIONS IMPOSED BY THE DECLARANT.

LCE - LIMITED COMMON ELEMENTS

"LIMITED COMMON ELEMENT" MEANS A PORTION OF THE COMMON ELEMENTS RESERVED FOR THE EXCLUSIVE USE OF THOSE ENTITLED TO THE USE OF ONE OR MORE, BUT LESS THAN ALL, OF THE UNITS AS SHOWN AND DESIGNATED HEREON AND DEFINED IN THE CONDOMINIUM INSTRUMENTS. REFERENCE IS HEREBY MADE TO THE CONDOMINIUM INSTRUMENTS FOR ADDITIONAL DEFINITIONS, REGULATIONS AND BUILDING RESTRICTIONS IMPOSED BY THE DECLARANT.

GENERAL NOTES:

- ALL WINDOWS, DOORS, AND HVAC UNITS THAT SERVICE ONE UNIT SHALL BE CONSIDERED PART OF THAT UNIT.
- FINISH FIRST FLOOR ELEVATIONS FOR ALL UNITS IS $\pm 0.000'$, $\pm 0.000'$ FOR ALL SECOND FLOOR UNITS AND $\pm 0.33'$ FOR ALL THIRD FLOOR UNITS.



7 BUILDING SECTION
G1.01 SCALE: 1/16" = 1'-0"

Architect's Certificate

I HEREBY CERTIFY THAT, TO THE BEST OF MY KNOWLEDGE AND BELIEF, THESE PLANS ARE ACCURATE AND COMPLY WITH THE PROVISIONS OF VIRGINIA CODE SECTION 55-79.58 B AND F AND THAT ALL THE UNITS SHOWN THEREON HAVE BEEN SUBSTANTIALLY COMPLETED.

Richard L. Ford, Jr.
Richard L. Ford, Jr., AIA

8/16/07
Date

City of Williamsburg & County of James City Circuit Court: This PLAT was recorded on 16 August 2007 at Lisle AM/PM, PG — DOCUMENT # 070022388 BETSY B. WOOLRIDGE, CLERK *Betsy B. Woolridge* Clerk

3 Large/Small Plat(s) Recorded herewith as # 070022388

Commonwealth ARCHITECTS
10 SHOCKS LIP, THIRD FLOOR
RICHMOND, VIRGINIA 23219
TELEPHONE 804.838.9040
FACSIMILE 804.838.9040

Exhibit D GREEN LEAF BLDG. - A CONDOMINIUM -
JAMES CITY COUNTY, VIRGINIA

Date	Revised	Date
	10.07.2006	
	11.09.2006	



Drawing Title
CONDOMINIUM PLANS

Sheet
G1.01

Comm No 057520

X:\0575 Newtown Green Leaf Bldg\DWG\Work Set\VTW2_G1.01\Condo.dwg, 11/19/2006 10:40:04 AM, SSoot