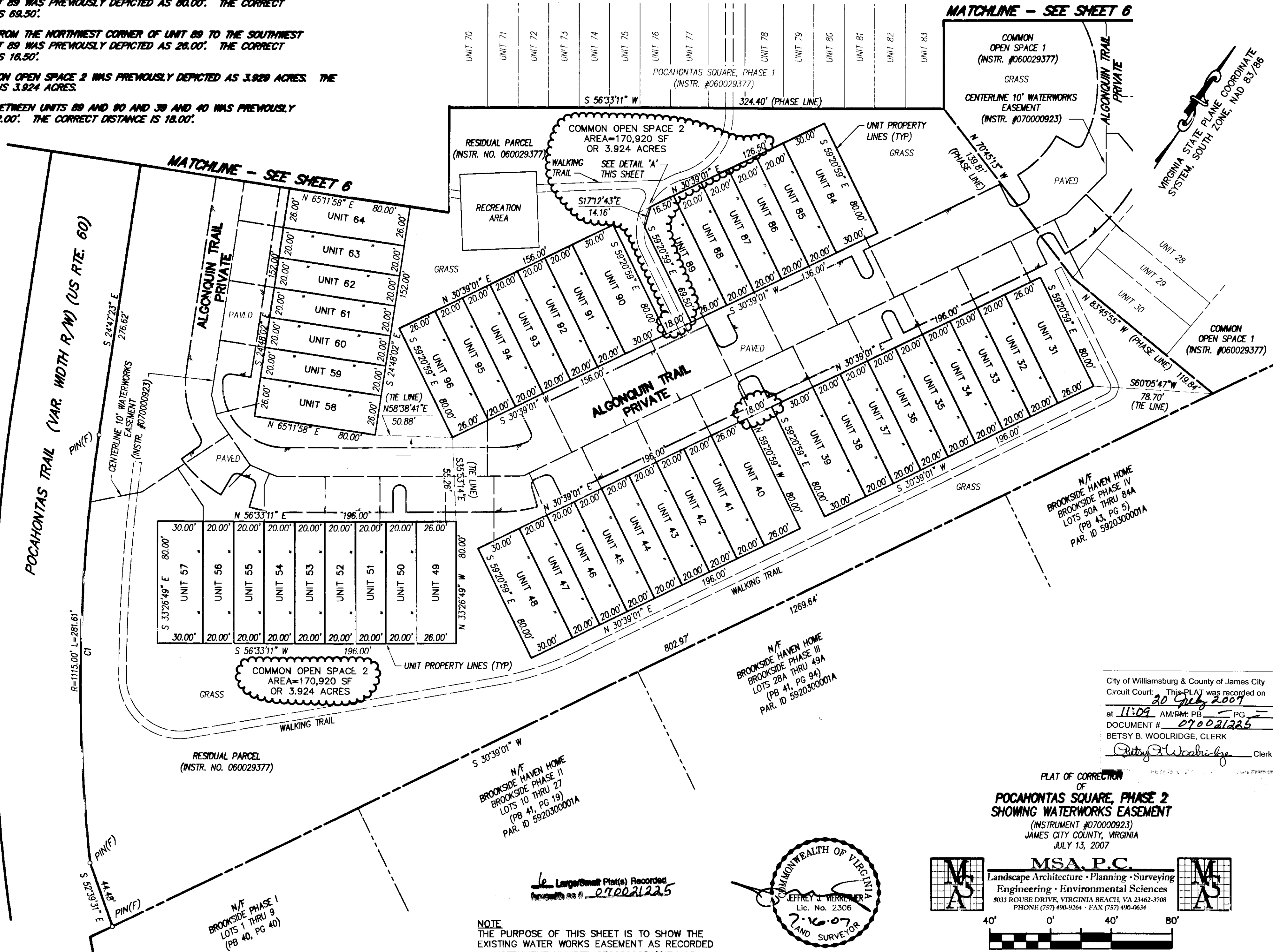


REVISION NOTES:

1. THE DISTANCE FROM THE SOUTHEAST CORNER OF UNIT 89 TO THE SOUTHWEST CORNER OF UNIT 89 WAS PREVIOUSLY DEPICTED AS 80.00'. THE CORRECT MEASUREMENT IS 89.50'.
2. THE DISTANCE FROM THE NORTHWEST CORNER OF UNIT 89 TO THE SOUTHWEST CORNER OF UNIT 89 WAS PREVIOUSLY DEPICTED AS 28.00'. THE CORRECT MEASUREMENT IS 18.50'.
3. AREA OF COMMON OPEN SPACE 2 WAS PREVIOUSLY DEPICTED AS 3.929 ACRES. THE CORRECT AREA IS 3.924 ACRES.
4. THE DISTANCE BETWEEN UNITS 89 AND 90 AND 39 AND 40 WAS PREVIOUSLY DEPICTED AS 22.00'. THE CORRECT DISTANCE IS 18.00'.

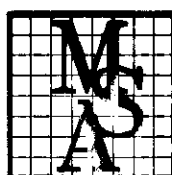
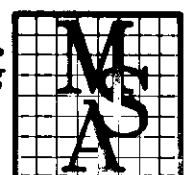
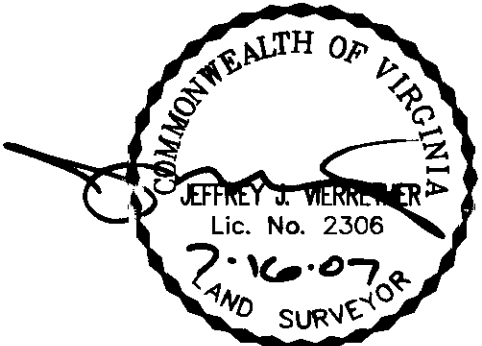
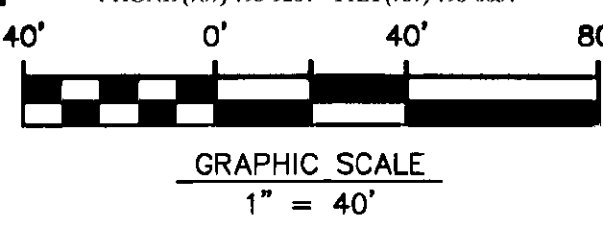
070021225



City of Williamsburg & County of James City
 Circuit Court: This PLAT was recorded on
 20 July 2007
 at 11:09 AM/PM: PB PG
 DOCUMENT # 070021225
 BETSY B. WOOLRIDGE, CLERK
Betsy B. Woolridge Clerk

PLAT OF CORRECTION
 OF
POCAHONTAS SQUARE, PHASE 2
 SHOWING WATERWORKS EASEMENT
 (INSTRUMENT #070000923)
 JAMES CITY COUNTY, VIRGINIA
 JULY 13, 2007

MSA, P.C.
 Landscape Architecture • Planning • Surveying
 Engineering • Environmental Sciences
 8033 ROUSE DRIVE, VIRGINIA BEACH, VA 23462-3708
 PHONE (757) 490-9264 • FAX (757) 490-0634

Large/Small Plat(s) Recorded
 as of 070021225

NOTE
 THE PURPOSE OF THIS SHEET IS TO SHOW THE EXISTING WATERWORKS EASEMENT AS RECORDED IN INSTRUMENT NUMBER 070000923 (CITY OF NEWPORT NEWS). ALSO SHOWN ON SHEET 6 OF 6.
 SEE SHEET 1 OF 6 FOR NOTES AND CERTIFICATES

FB: CS 323, PG 25 & 32
 DRWN. BY CJS
 CHK'D. BY JJV DATE 07/13/07

JOB# 03066A
 SHEET 5 OF 6