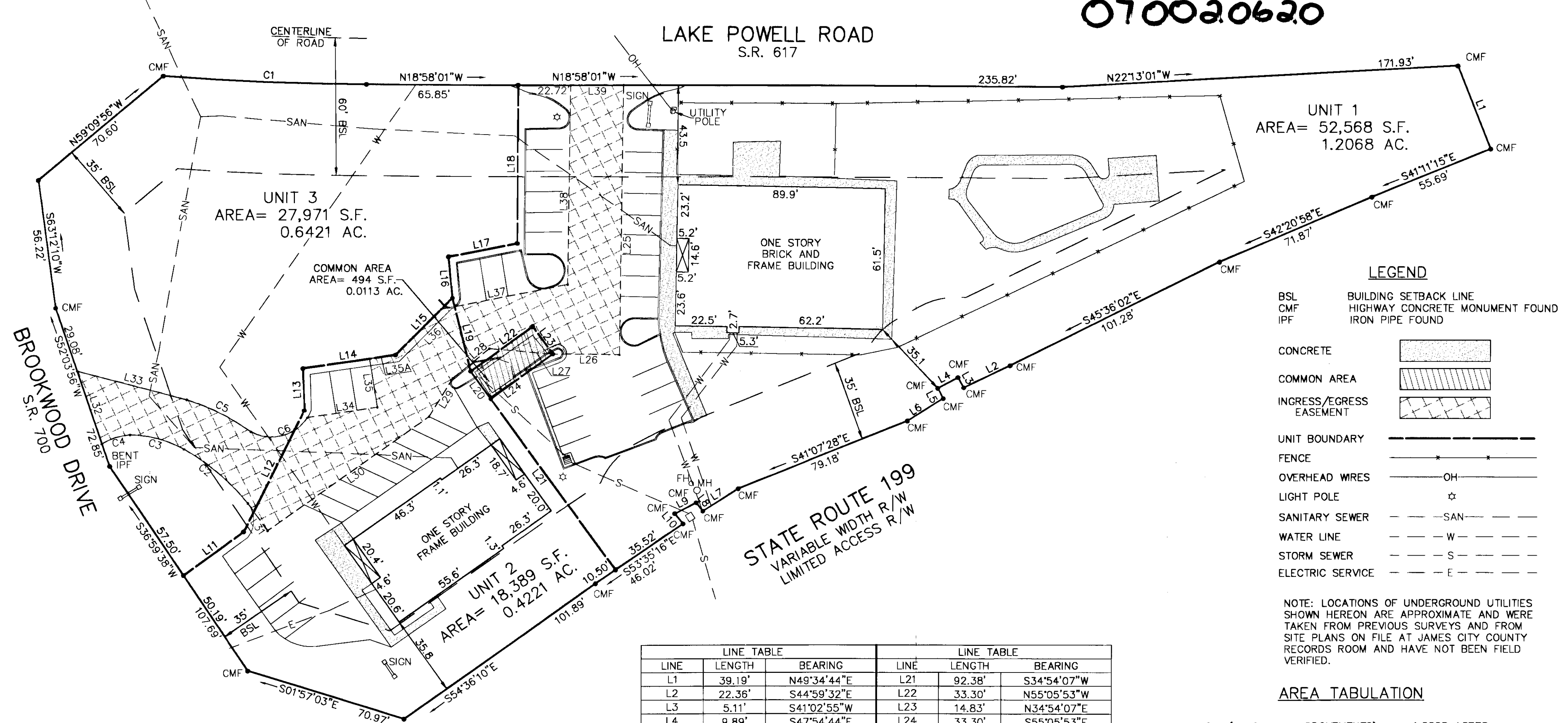


070020620

LAKE POWELL ROAD  
S.R. 617



UNIT 1  
AREA= 52,568 S.F.  
1.2068 AC.

UNIT 3  
AREA= 27,971 S.F.  
0.6421 AC.

COMMON AREA  
AREA= 494 S.F.  
0.0113 AC.

UNIT 2  
AREA= 18,389 S.F.  
0.4221 AC.

LEGEND

- BSL BUILDING SETBACK LINE
- CMF HIGHWAY CONCRETE MONUMENT FOUND
- IPF IRON PIPE FOUND
- CONCRETE
- COMMON AREA
- INGRESS/EGRESS EASEMENT
- UNIT BOUNDARY
- FENCE
- OVERHEAD WIRES
- LIGHT POLE
- SANITARY SEWER
- WATER LINE
- STORM SEWER
- ELECTRIC SERVICE

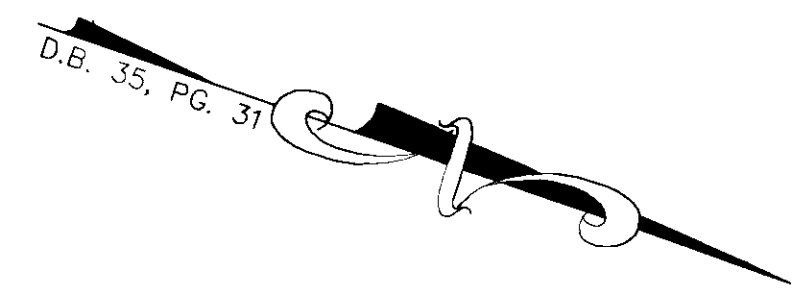
NOTE: LOCATIONS OF UNDERGROUND UTILITIES SHOWN HEREON ARE APPROXIMATE AND WERE TAKEN FROM PREVIOUS SURVEYS AND FROM SITE PLANS ON FILE AT JAMES CITY COUNTY RECORDS ROOM AND HAVE NOT BEEN FIELD VERIFIED.

AREA TABULATION

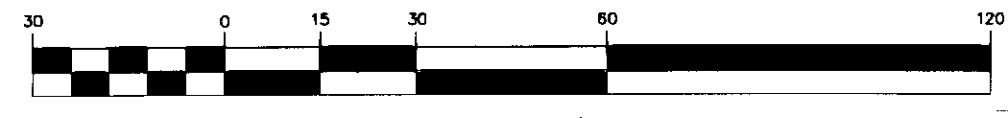
UNIT 1 (LAND AND IMPROVEMENTS)	1.2068 ACRES
UNIT 2 (LAND AND IMPROVEMENTS)	0.4221 ACRES
UNIT 3 (LAND ONLY)	0.6421 ACRES
COMMON AREA (DUMPSTER PAD)	0.0113 ACRES
<b>TOTAL</b>	<b>2.2823 ACRES</b>

LINE TABLE			LINE TABLE		
LINE	LENGTH	BEARING	LINE	LENGTH	BEARING
L1	39.19'	N49°34'44"E	L21	92.38'	S34°54'07"W
L2	22.36'	S44°59'32"E	L22	33.30'	N55°05'53"W
L3	5.11'	S41°02'55"W	L23	14.83'	N34°54'07"E
L4	9.89'	S47°54'44"E	L24	33.30'	S55°05'53"E
L5	5.00'	N43°04'12"E	L25	117.56'	N71°38'14"E
L6	18.14'	S51°37'39"E	L26	28.90'	S18°21'46"E
L7	18.22'	S51°26'10"E	L27	27.64'	S14°19'34"E
L8	4.62'	S33°39'08"W	L28	20.41'	S58°33'08"E
L9	10.48'	S46°33'12"E	L29	19.71'	S77°30'07"E
L10	5.68'	N31°44'06"E	L30	85.88'	S54°38'53"E
L11	32.39'	S55°03'03"E	L31	14.74'	S35°21'07"W
L12	59.01'	S82°49'54"E	L32	33.46'	S52°03'56"W
L13	18.31'	N68°59'44"E	L33	49.09'	N04°18'51"W
L14	40.63'	S27°38'17"E	L34	30.62'	N27°38'17"W
L15	34.99'	S64°32'43"E	L35	21.43'	S61°52'28"W
L16	18.12'	N65°23'26"E	L35A	6.30'	N27°38'17"W
L17	30.39'	S30°19'42"E	L36	28.08'	N64°32'43"W
L18	68.98'	N71°08'11"E	L37	55.88'	N30°19'42"W
L19	32.88'	S56°56'25"W	L38	86.94'	S71°38'14"W
L20	14.83'	S34°54'07"W	L39	22.92'	N18°58'01"W

CURVE TABLE						
CURVE	LENGTH	RADIUS	TANGENT	CHORD	CHORD BEARING	DELTA
C1	88.16'	1161.78'	44.10'	88.14'	N16°47'35"W	4°20'52"
C2	36.68'	97.83'	18.56'	36.46'	S21°17'08"W	21°28'52"
C3	24.52'	50.03'	12.51'	24.27'	S04°04'05"E	28°04'44"
C4	12.89'	26.63'	6.58'	12.77'	S36°54'20"E	27°44'42"
C5	31.40'	95.69'	15.84'	31.26'	S07°28'46"W	18°48'06"
C6	27.75'	18.60'	17.19'	25.25'	N33°22'15"W	85°28'23"



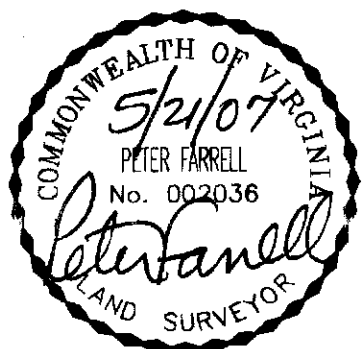
GRAPHIC SCALE



( IN FEET )  
1 inch = 30 ft.

City of Williamsburg & County of James City  
Circuit Court: This PLAT was recorded on  
16 July 2007  
at 9:49 AM P.M. PB PG  
DOCUMENT # 070020620  
BETSY B. WOOLRIDGE, CLERK  
*Betsy Woolridge* Clerk

SURVEYORS CERTIFICATE:  
I HEREBY CERTIFY THAT TO THE BEST OF MY KNOWLEDGE AND BELIEF, THIS PLAT COMPLIES WITH THE PROCEDURES AND STANDARDS ESTABLISHED BY THE BOARD FOR ARCHITECTS, PROFESSIONAL ENGINEERS, LAND SURVEYORS, CERTIFIED INTERIOR DESIGNERS, AND LANDSCAPE ARCHITECTS IN THE COMMONWEALTH OF VIRGINIA; COMPLIES WITH THE PROVISIONS OF SECTION 55-79.58(a) & (b) OF THE CODE OF VIRGINIA 1950 AS AMENDED AND THAT THE BUILDINGS AS DEPICTED HEREON HAVE BEEN SUBSTANTIALLY COMPLETED.



5/21/07

*Peter Farrell*

PETER FARRELL, L.S. #002036

Large/Small Plat(s) Recorded herewith as # 070020620

EXHIBIT SHOWING  
BROOKWOOD CENTER CONDOMINIUMS

PROPERTY OF  
DAVID B. AND GAIL D. BATES  
D.B. 186, PG. 845  
TAX PARCEL 4810100029A

JAMES CITY COUNTY, VIRGINIA

SCALE 1"=30' DATE: 05/21/07



4029 Ironbound Road  
Suite 100  
Williamsburg, VA 23188  
Tel. (757) 253-2975  
Fax (757) 229-0049  
Email: lmdg@landmarkdg.com

5544 Greenwich Road  
Suite 200  
Virginia Beach, VA 23462  
Tel. (757) 473-2000  
Fax (757) 497-7933  
Email: lmdg@landmarkdg.com

DRAWN BY: PF  
CHKD. BY: SAR

PROJ. NO.: 2007033-000.01  
DWG. NO.: 17801W