

#070017891

PLAT OF SUBDIVISION

## LANDFALL VILLAGE

(PART OF THE LANDFALL AT JAMESTOWN DEVELOPMENT)

JAMESTOWN MAGISTERIAL DISTRICT  
JAMES CITY COUNTY, VIRGINIA

DATE: 09/15/06	SHEET 2 OF 4	SCALE: 1"=40'
PROJECT NO: 31825.01	DRAWN BY: DWP	

**Vanasse Hangen Brustlin, Inc.**  
Transportation Land Development Environmental Services  
 11832 Rock Landing Drive, Suite 207  
 Newport News, Virginia 23606-4231  
 (757) 873-5386 • FAX (757) 873-0757

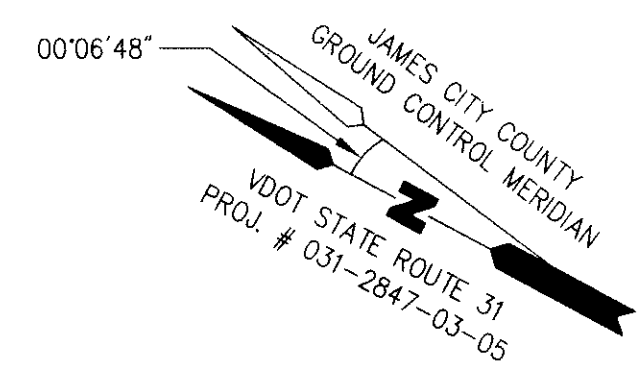
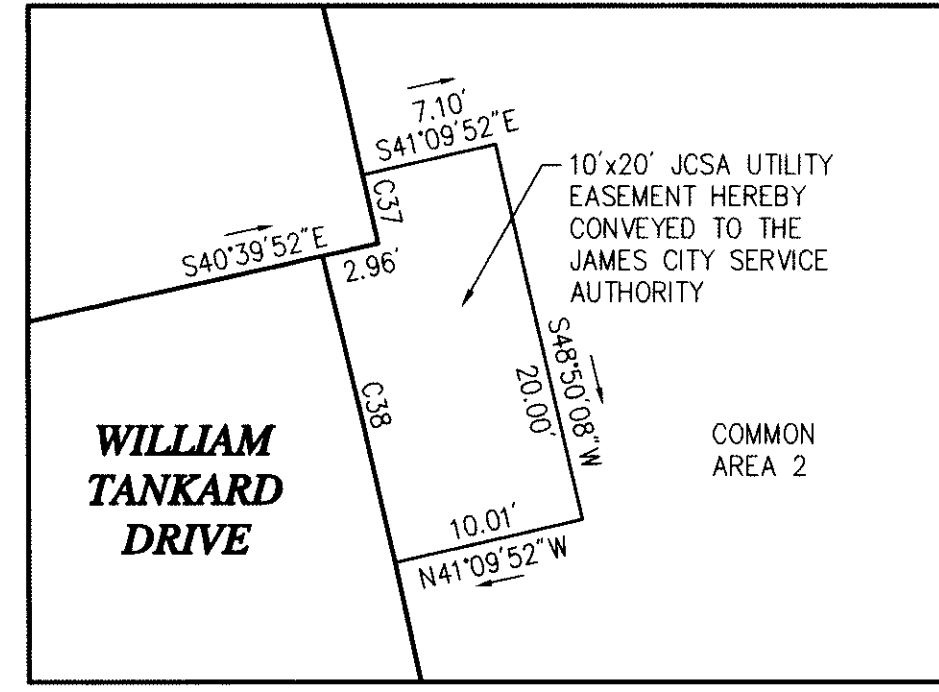
REVISED: 3/12/07



**Legend**

- IRON ROD SET
- ANGLE POINT
- PROPOSED CONSERVATION EASEMENT SIGN

AREA OF CONSERVATION EASEMENT CONVEYED TO JAMES CITY COUNTY



CURVE DATA TABLE						
NUMBER	RADIUS	DELTA	ARC LENGTH	TANGENT	CHORD	CHORD BEARING
C1	620.00'	09°43'10"	105.18'	52.71'	105.05'	S52°41'38"W
C2	326.00'	27°10'50"	154.65'	78.81'	153.21'	S43°57'48"W
C3	326.00'	26°26'06"	150.41'	76.57'	149.08'	S44°20'10"W
C4	326.00'	00°44'44"	4.24'	2.12'	4.24'	S30°44'45"W
C5	180.00'	58°32'45"	183.93'	100.90'	176.03'	S01°06'00"W
C6	180.00'	48°15'45"	151.62'	80.64'	147.18'	S06°14'30"W
C7	180.00'	10°17'00"	32.31'	16.20'	32.26'	S23°01'52"E
C8	180.00'	01°17'25"	4.05'	2.03'	4.05'	S28°49'04"E
C9	180.00'	36°32'27"	114.80'	59.43'	112.86'	S47°44'00"E
C10	180.00'	31°38'00"	99.38'	50.99'	98.12'	S81°49'14"E
C11	180.00'	27°59'27"	87.94'	44.86'	87.06'	N68°22'02"E
C12	52.00'	269°33'50"	244.65'	52.40'	73.82'	N09°09'13"E
C13	52.00'	08°11'16"	7.44'	3.72'	7.42'	S58°27'57"W
C14	52.00'	52°21'43"	47.52'	25.57'	45.89'	S88°44'27"W
C15	52.00'	83°10'16"	75.48'	46.14'	69.03'	N23°29'34"W
C16	52.00'	125°50'35"	114.21'	101.71'	92.60'	N81°00'51"E
C17	25.00'	71°14'48"	31.09'	17.91'	29.12'	N71°41'16"W
C18	220.00'	12°54'09"	49.54'	24.88'	49.44'	N79°08'25"E
C19	220.00'	13°34'17"	52.11'	26.18'	51.99'	S87°37'22"E
C20	220.00'	11°01'43"	42.35'	21.24'	42.28'	S75°19'22"E
C21	220.00'	11°01'43"	42.35'	21.24'	42.28'	S64°17'38"E
C22	220.00'	17°11'43"	66.03'	33.26'	65.78'	S50°10'55"E
C23	220.00'	13°24'42"	51.51'	25.87'	51.38'	S34°52'43"E
C24	220.00'	04°42'48"	18.10'	9.05'	18.09'	S25°48'58"E
C25	30.00'	78°27'47"	41.08'	24.49'	37.95'	N62°41'28"W
C26	229.90'	17°18'02"	69.42'	34.98'	69.16'	S70°28'39"W
C27	269.90'	17°13'10"	81.12'	40.87'	80.81'	S70°26'13"W
C28	269.90'	08°07'15"	38.25'	19.16'	38.22'	S65°53'16"W
C29	269.90'	09°05'55"	42.86'	21.48'	42.82'	S74°29'51"W
C30	30.00'	78°27'47"	41.08'	24.49'	37.95'	N38°50'45"E
C31	220.00'	30°45'31"	118.10'	60.51'	116.69'	N14°59'37"E
C32	220.00'	21°27'08"	82.37'	41.67'	81.89'	N10°20'26"E
C33	220.00'	09°18'23"	35.73'	17.91'	35.69'	N25°43'11"E
C34	366.00'	27°10'50"	173.63'	88.48'	172.00'	N43°57'48"E
C35	580.00'	09°49'23"	99.44'	49.84'	99.32'	N52°38'32"E
C36	630.00'	3°22'36"	37.13'	18.57'	37.12'	N47°38'45"E
C37	630.00'	0°20'01"	3.67'	1.83'	3.67'	N49°10'03"E
C38	620.00'	1°30'43"	16.36'	8.18'	16.36'	N48°35'24"E
C39	173.00'	4°42'59"	14.24'	7.12'	14.24'	S63°38'44"E
C40	173.00'	6°08'25"	18.54'	9.28'	18.53'	S69°04'26"E
C41	229.90'	4°59'27"	20.03'	10.02'	20.02'	S64°19'21"W

