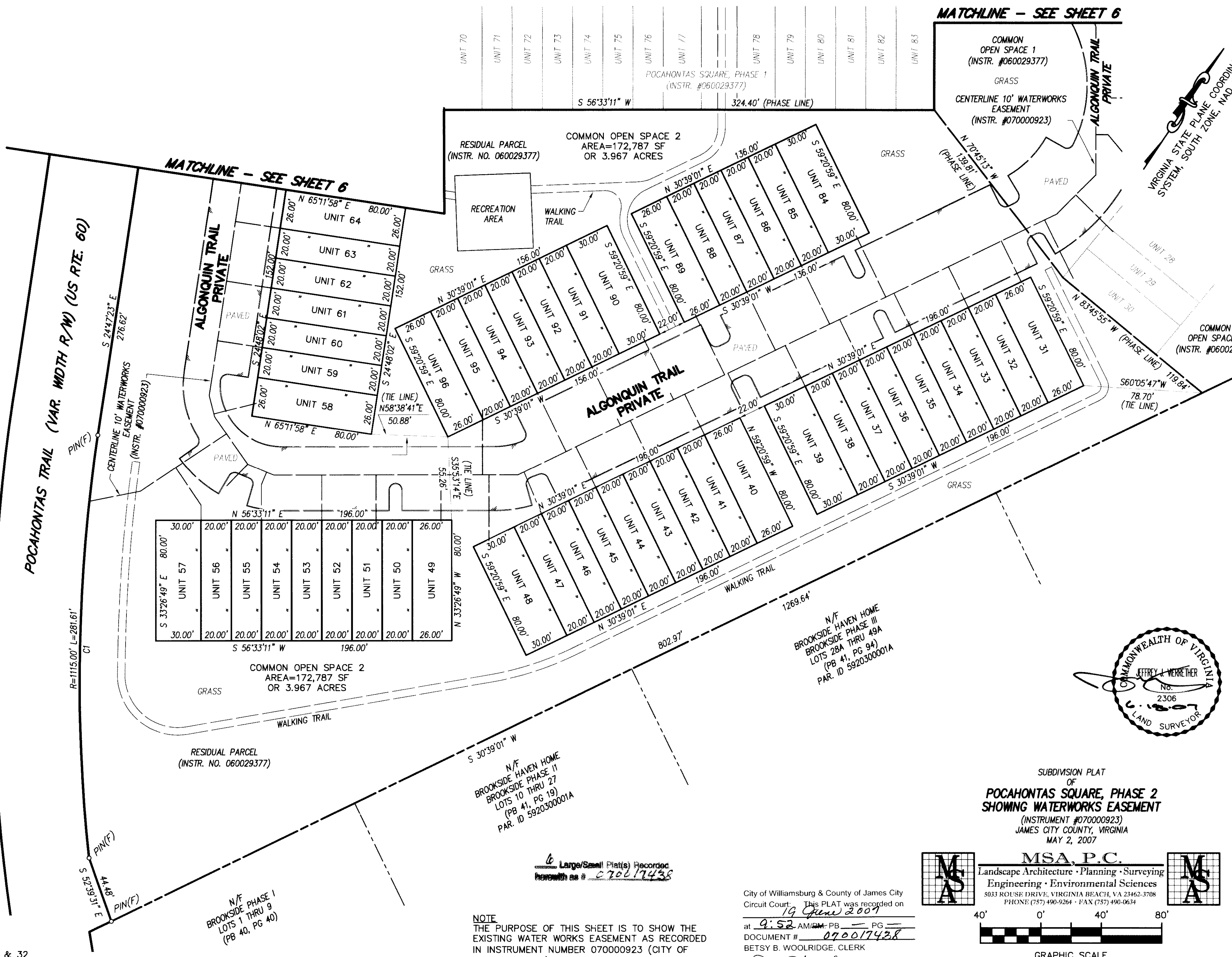
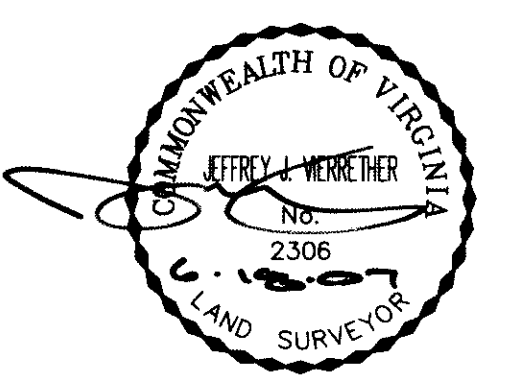


#070017438

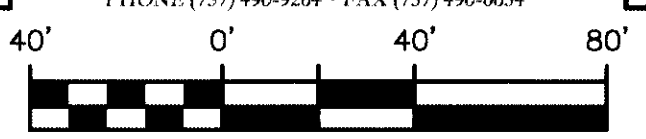
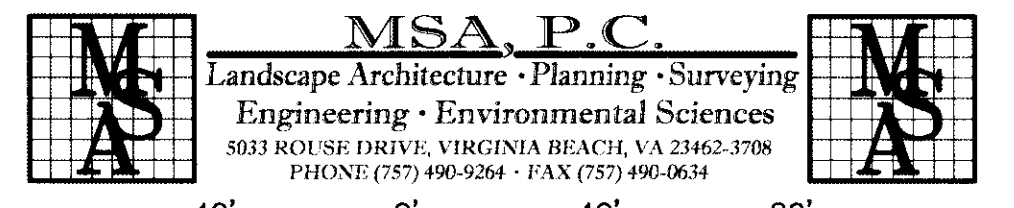
MATCHLINE - SEE SHEET 6



VIRGINIA STATE PLANE COORDINATE SYSTEM, SOUTH ZONE, NAD 83/86



SUBDIVISION PLAT OF
POCAHONTAS SQUARE, PHASE 2
 SHOWING WATERWORKS EASEMENT
 (INSTRUMENT #070000923)
 JAMES CITY COUNTY, VIRGINIA
 MAY 2, 2007



City of Williamsburg & County of James City
 Circuit Court: This PLAT was recorded on
 19 June 2007
 at 9:52 AM in PB PG
 DOCUMENT # 070017438
 BETSY B. WOOLRIDGE, CLERK
 Betsy B. Woolridge Clerk

N/F
 BROOKSIDE HAVEN HOME
 BROOKSIDE PHASE II
 LOTS 10 THRU 27
 (PB 41, PG 19)
 PAR. ID 5920300001A

Large/Small Plat(s) Recorded
 hereunder as # 070017438

NOTE
 THE PURPOSE OF THIS SHEET IS TO SHOW THE
 EXISTING WATER WORKS EASEMENT AS RECORDED
 IN INSTRUMENT NUMBER 070000923 (CITY OF
 NEWPORT NEWS). ALSO SHOWN ON SHEET 6 OF 6.
 SEE SHEET 1 OF 6 FOR NOTES AND CERTIFICATES

FB: CS 323, PG 25 & 32
 DRWN. BY CJS
 CHK'D. BY JJV DATE 05/02/07

JOB# 03066A
 SHEET 5 OF 6