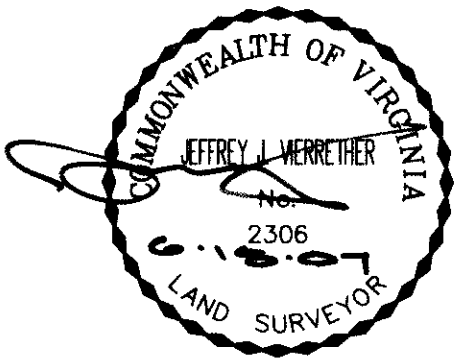
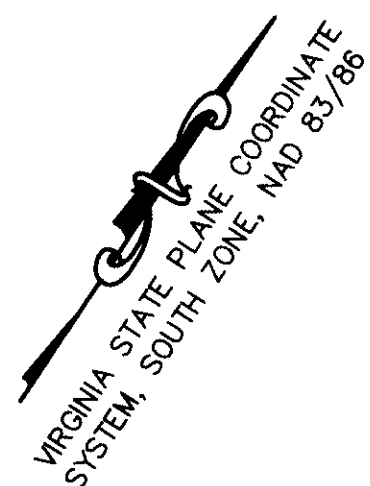
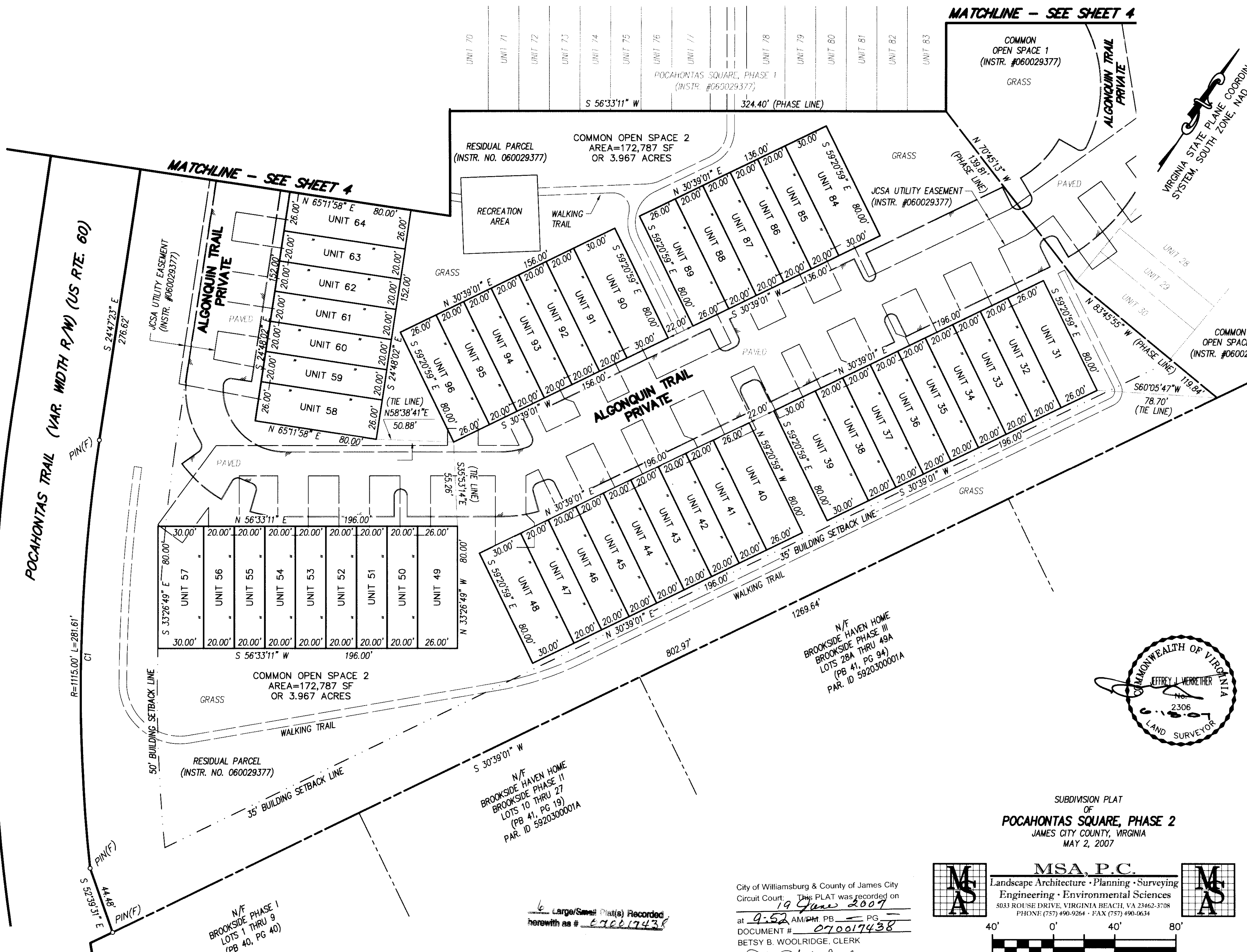


#070017438



SUBDIVISION PLAT
OF
POCAHONTAS SQUARE, PHASE 2
JAMES CITY COUNTY, VIRGINIA
MAY 2, 2007

MSA, P.C.
Landscape Architecture · Planning · Surveying
Engineering · Environmental Sciences
5033 ROUSE DRIVE, VIRGINIA BEACH, VA 23462-3708
PHONE (757) 490-9264 · FAX (757) 490-0634



City of Williamsburg & County of James City
Circuit Court: This PLAT was recorded on
19 June 2007
at 9:52 AM/PM, PB — PG —
DOCUMENT # 070017438
BETSY B. WOOLRIDGE, CLERK
Betsy B. Woolridge Clerk

6 Large/Small Plat(s) Recorded
herewith as # 070017438

SEE SHEET 1 OF 6 FOR NOTES AND CERTIFICATES
SEE SHEETS 5 & 6 OF 6 FOR WATERWORKS EASEMENT (CITY OF NEWPORT NEWS)

FB: CS 323, PG 25 & 32
DRWN. BY CJS
CHK'D. BY JJV DATE 05/02/07

JOB# 03066A
SHEET 3 OF 6