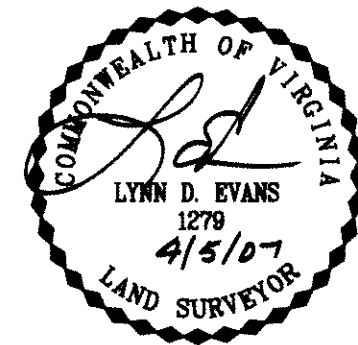
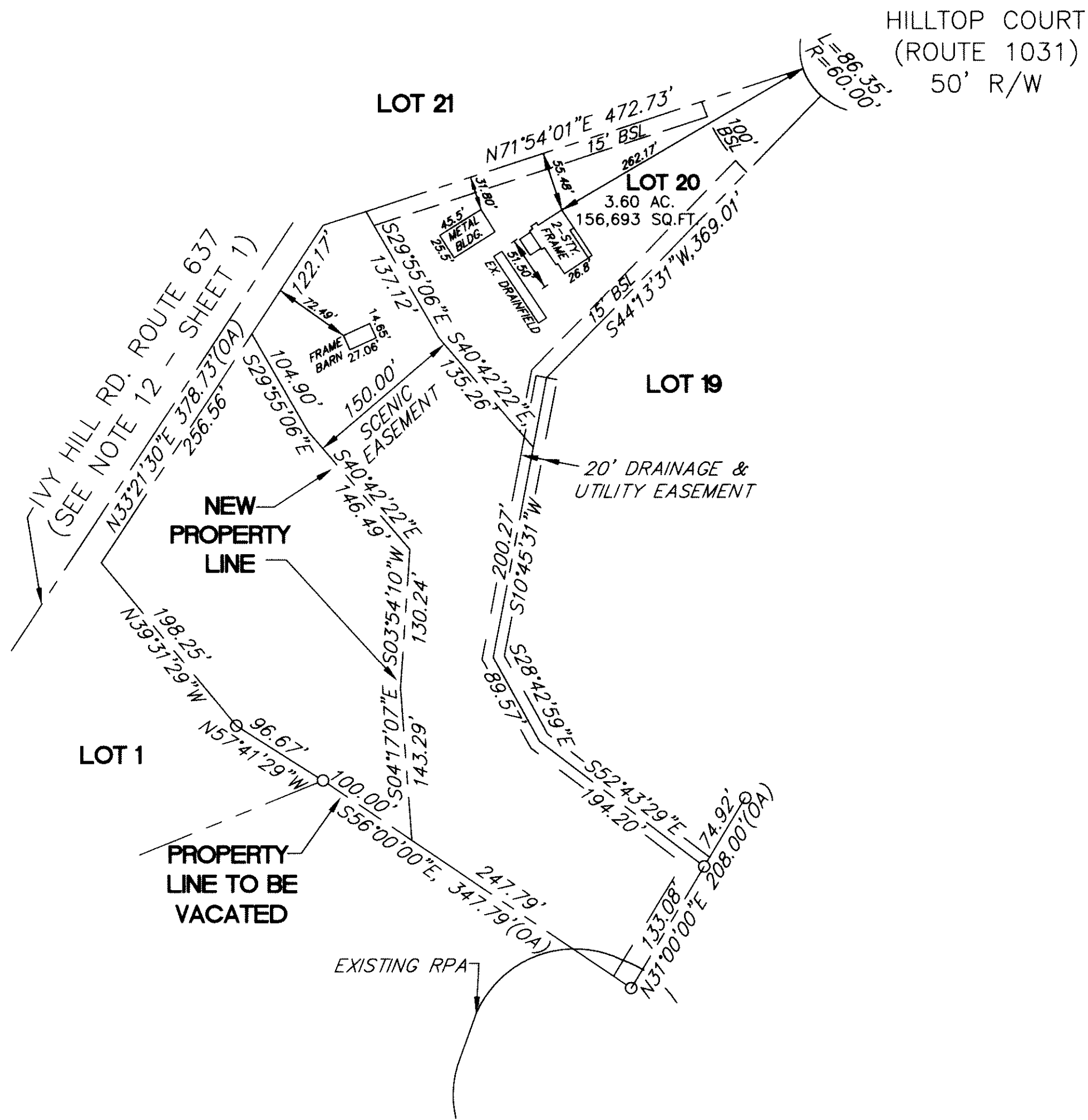
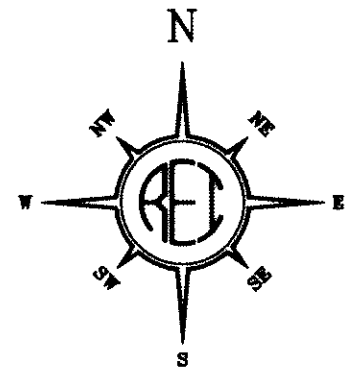
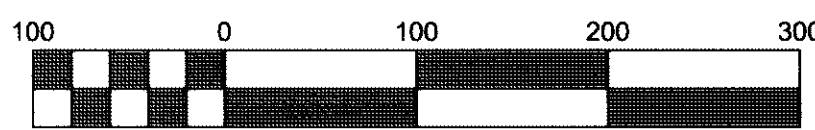


#070015684



Bury+Partners
ENGINEERING SOLUTIONS
4085 Ironbound Road, Suite 200
Williamsburg, Virginia 23188
Tel. (757) 229-1776 Fax (757) 229-4683
Bury+Partners, Inc. ©Copyright 2006

BOUNDARY LINE ADJUSTMENT
OF
LOT 20
MERRY OAKS, SECTION ONE
AND THE PROPERTY OF
MC REAL ESTATE HOLDINGS, LLC
STONEHOUSE DISTRICT
JAMES CITY COUNTY, VIRGINIA
REVISED: MAY 2, 2007 JANUARY 9, 2007, SHEET 5 OF 5
REVISED: APRIL 5, 2007 REVISION DATE: MARCH 15, 2007



Scale: 1" = 100'

SHEET 5 OF 5

5 Large/Small Plat(s) Recorded
herewith as # 070015684

City of Williamsburg & County of James City
Circuit Court: This PLAT was recorded on
at 11:50 AM on 4 June 2007 PG
DOCUMENT # 070015684
BETSY B. WOOLRIDGE, CLERK
Betsy Woolridge Clerk