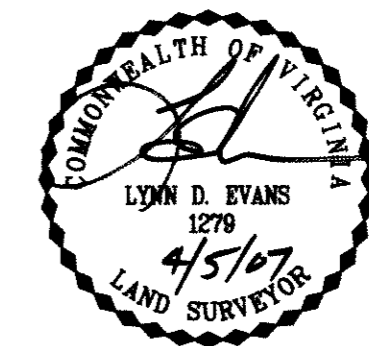
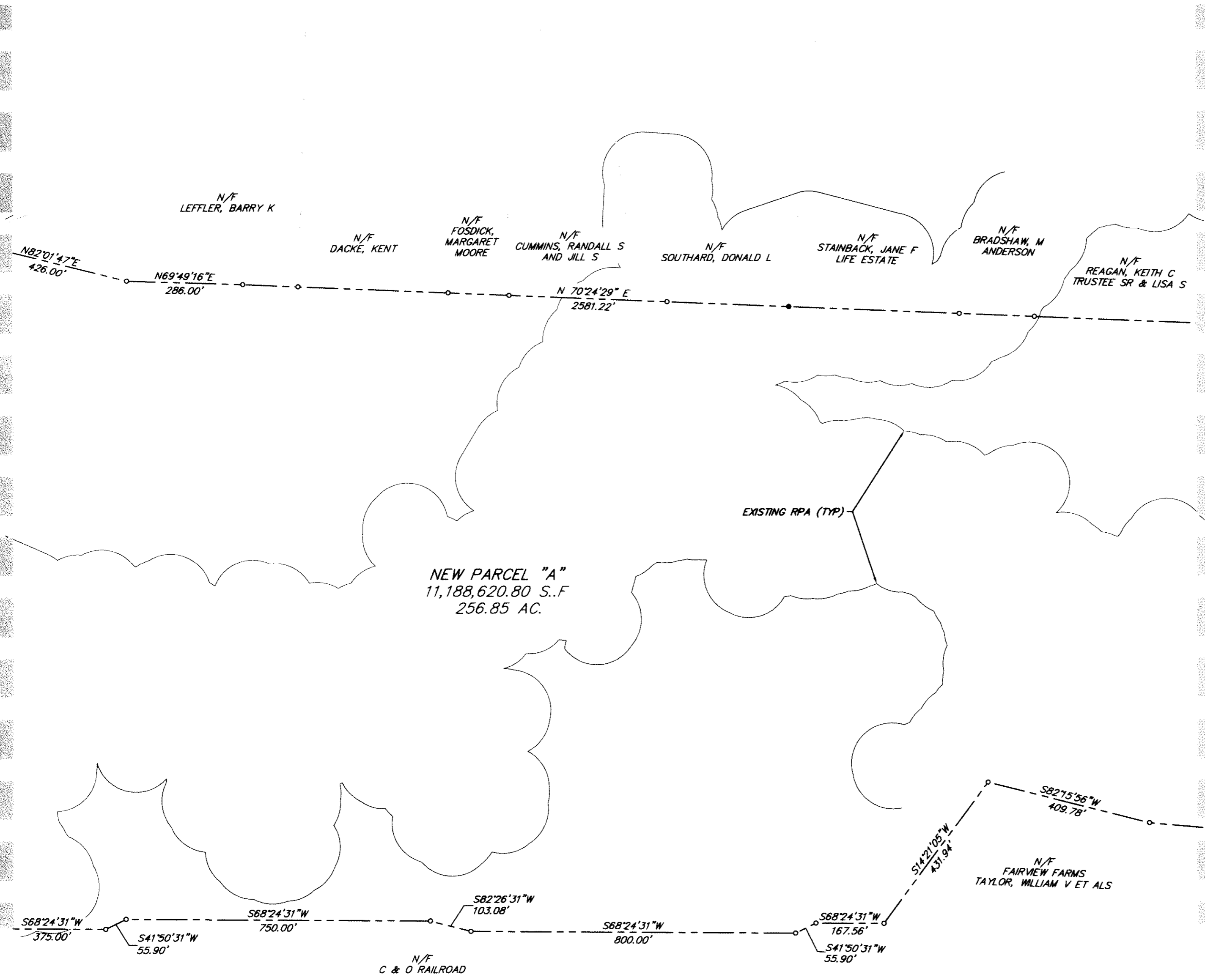


#070015684

MATCHLINE SHEET 2 OF 5

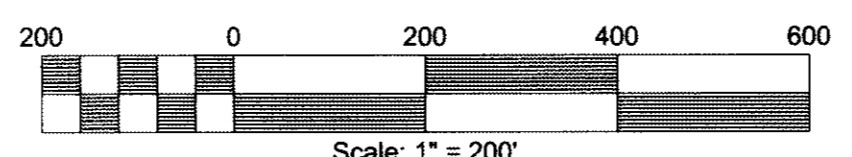
MATCHLINE SHEET 4 OF 5



Bury+Partners
 ENGINEERING SOLUTIONS
 4095 Ironbound Road, Suite 200
 Williamsburg, Virginia 23188
 Tel. (757) 229-1776 Fax (757) 229-4683
 Bury+Partners, Inc. ©Copyright 2006

BOUNDARY LINE ADJUSTMENT
 OF
 LOT 20
 MERRY OAKS, SECTION ONE
 AND THE PROPERTY OF
 MC REAL ESTATE HOLDINGS, LLC
 STONEHOUSE DISTRICT
 JAMES CITY COUNTY, VIRGINIA
 JANUARY 9, 2007, SHEET 3 OF 5
 REVISED: APRIL 5, 2007 REVISION DATE: MARCH 15, 2007

○ DENOTES ROD SET
 ● DENOTES FOUND PIPE



SHEET 4 OF 5

5 Large/Small Plat(s) Recorded
 hereon as # 070015684

City of Williamsburg & County of James City
 Circuit Court: This PLAT was recorded on
 at 11:50 AM/PA PB PG
 DOCUMENT # 070015684
 BETSY B. WOOLRIDGE, CLERK
 Betsy B. Woolridge Clerk