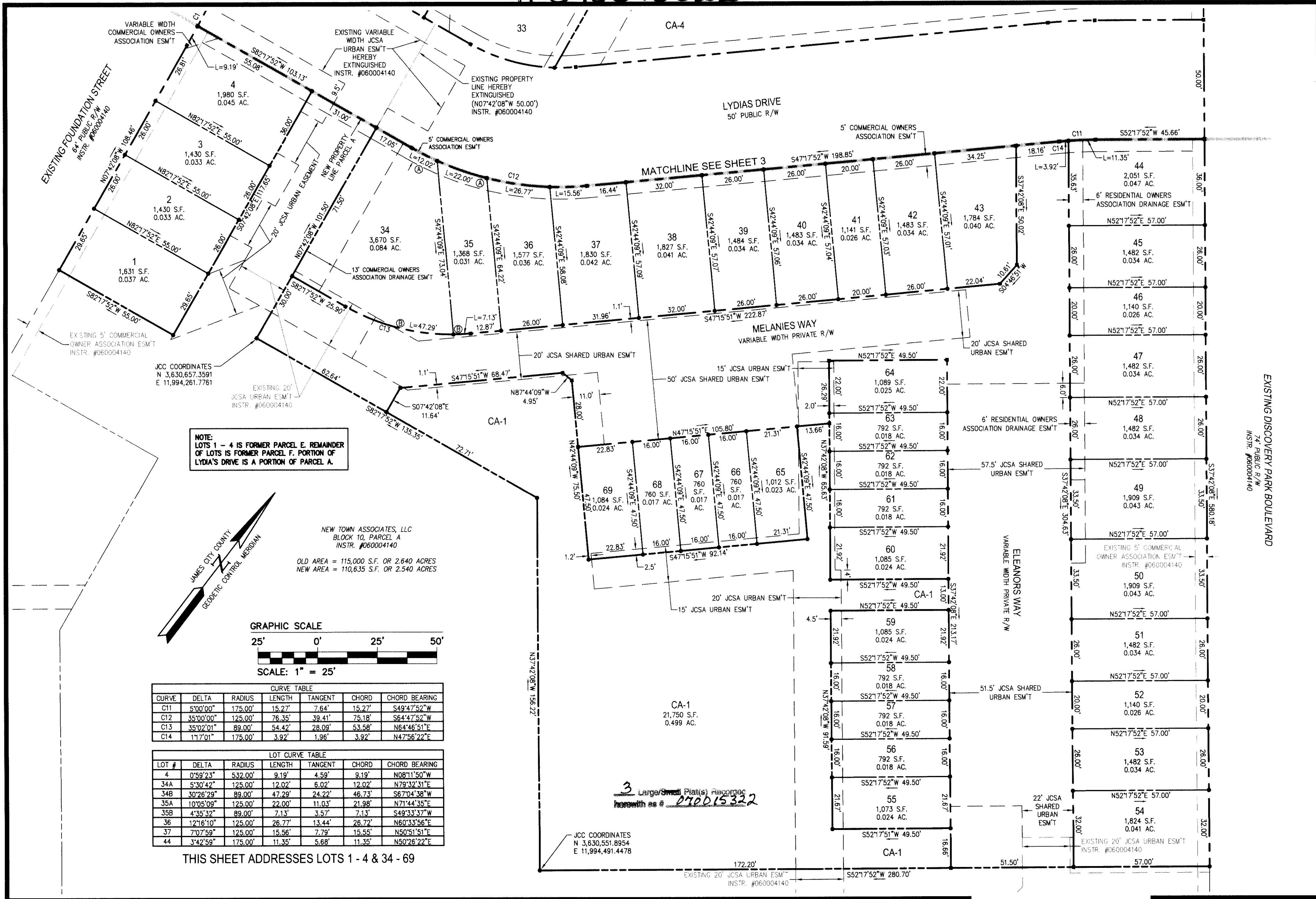


#070015322

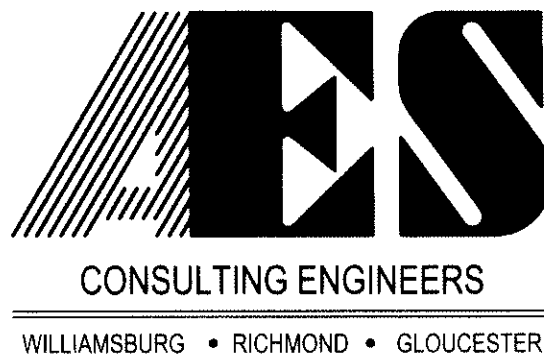


CURVE TABLE						
CURVE	DELTA	RADIUS	LENGTH	TANGENT	CHORD	CHORD BEARING
C11	5°00'00"	175.00'	15.27'	7.64'	15.27'	S49°47'52"W
C12	35°00'00"	125.00'	76.35'	39.41'	75.18'	S64°47'52"W
C13	35°02'01"	89.00'	54.42'	28.09'	53.58'	N64°46'51"E
C14	1°17'01"	175.00'	3.92'	1.96'	3.92'	N47°56'22"E

LOT CURVE TABLE						
LOT #	DELTA	RADIUS	LENGTH	TANGENT	CHORD	CHORD BEARING
4	0°39'23"	532.00'	9.19'	4.59'	9.19'	N08°11'50"W
34A	5°30'42"	125.00'	12.02'	6.02'	12.02'	N79°32'31"E
34B	30°26'29"	89.00'	47.29'	24.22'	46.73'	S67°04'38"W
35A	10°05'09"	125.00'	22.00'	11.03'	21.98'	N71°44'35"E
35B	4°35'32"	89.00'	7.13'	3.57'	7.13'	S49°33'37"W
36	12°16'10"	125.00'	26.77'	13.44'	26.72'	N60°33'56"E
37	7°07'59"	125.00'	15.56'	7.79'	15.55'	N50°51'51"E
44	3°42'59"	175.00'	11.35'	5.68'	11.35'	N50°26'22"E

THIS SHEET ADDRESSES LOTS 1 - 4 & 34 - 69

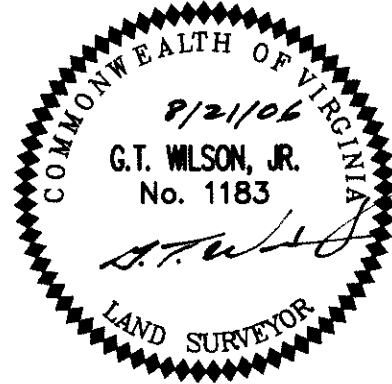
S:\Jobs\6632\1E\24-5-Blk10-Residential\dwg\Plats\6632E245SUBD SH2.dwg, 11/7/2006 2:30:33 PM, mayauda hawkins



5248 Olde Towne Road, Suite 1
Williamsburg, Virginia 23188
(757) 253-0040
Fax (757) 220-8994

PLAT OF SUBDIVISION & LOT LINE EXTINGUISHMENT
NEW TOWN
SECTION 2 & 4, BLOCK 10, PARCEL A, E & F
LOTS 1 THRU 69
 BEING A PORTION OF THE PROPERTY OWNED BY
 NEW TOWN ASSOCIATES, LLC & HHJV, LLC

BERKELEY DISTRICT JAMES CITY COUNTY VIRGINIA



City of Williamsburg & County of James City	
Circuit Court: This PLAT was recorded on	
at 3:24 PM, PG 1	
DOCUMENT # 070015322	
BETSY B. WOOLRIDGE, CLERK	
Betsy B. Woolridge Clerk	
1	10/3/06
No.	DATE
	REVISION / COMMENT / NOTE
	AWT
	BY

Designed	Drawn
REC	AWT
Scale	Date
1"=25'	8/21/06
Project No.	
6632-E-24-5	
Drawing No.	
2 OF 3	