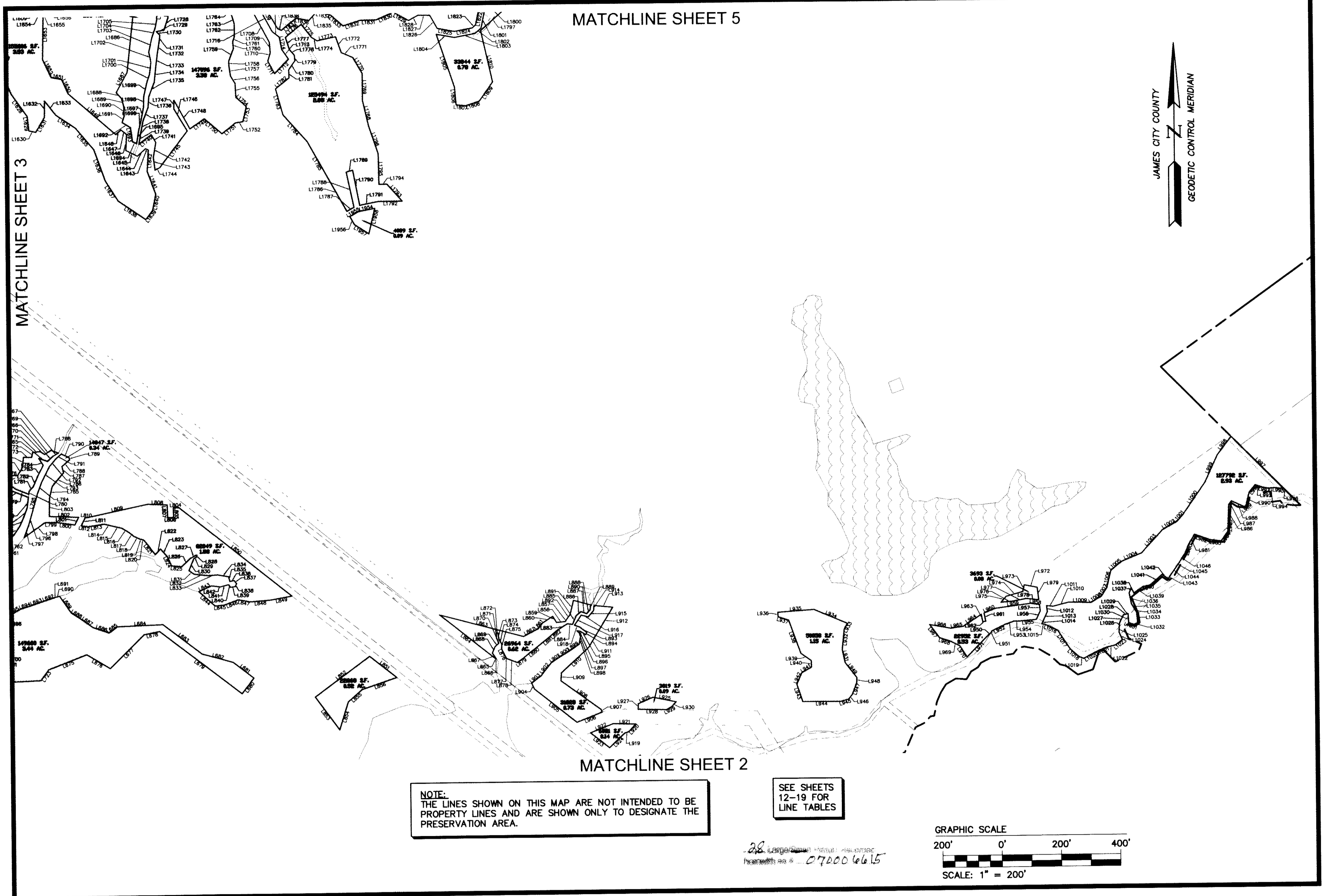


070006615

MATCHLINE SHEET 5



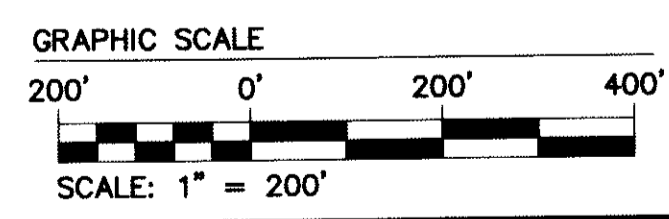
MATCHLINE SHEET 3

JAMES CITY COUNTY
GEODETIC CONTROL MERIDIAN

MATCHLINE SHEET 2

NOTE:
THE LINES SHOWN ON THIS MAP ARE NOT INTENDED TO BE PROPERTY LINES AND ARE SHOWN ONLY TO DESIGNATE THE PRESERVATION AREA.

SEE SHEETS
12-19 FOR
LINE TABLES



28
LARGE SCALE
PLAT
#070006615

S:\Jobs\888111\1-Preservation Map and Exhibit\DEQ\dwg\Cad\MAP SHOWING PRESERVATION AREAS.dwg, 3/2/2007 8:32:18 AM, roy.pennington

CONSULTING ENGINEERS
WILLIAMSBURG • RICHMOND

5248 Olde Towne Road, Suite 1
Williamsburg, Virginia 23188
(757) 253-0040
Fax (757) 220-8994

MAP SHOWING PRESERVATION AREAS

LOCATED ON THE PROPERTY OWNED BY
COLONIAL HERITAGE

STONEHOUSE DISTRICT COUNTY OF JAMES CITY VIRGINIA

No.	DATE	REVISION / COMMENT / NOTE	REVISED BY	REVIEWED BY
		City of Williamsburg & County of James City Circuit Court: This PLAT was recorded on <u>8 March 2007</u> at <u>8:51</u> AM, PM PB = PG = DOCUMENT # <u>070006615</u> BETSY B. WOOLRIDGE, CLERK <u>Betsy B. Woolridge</u> Clerk		

Designed AES	Drawn AES
Scale 1"=200'	Date 01/15/2007
Project No. 8881-11-O	
Drawing No. 4 of 28	