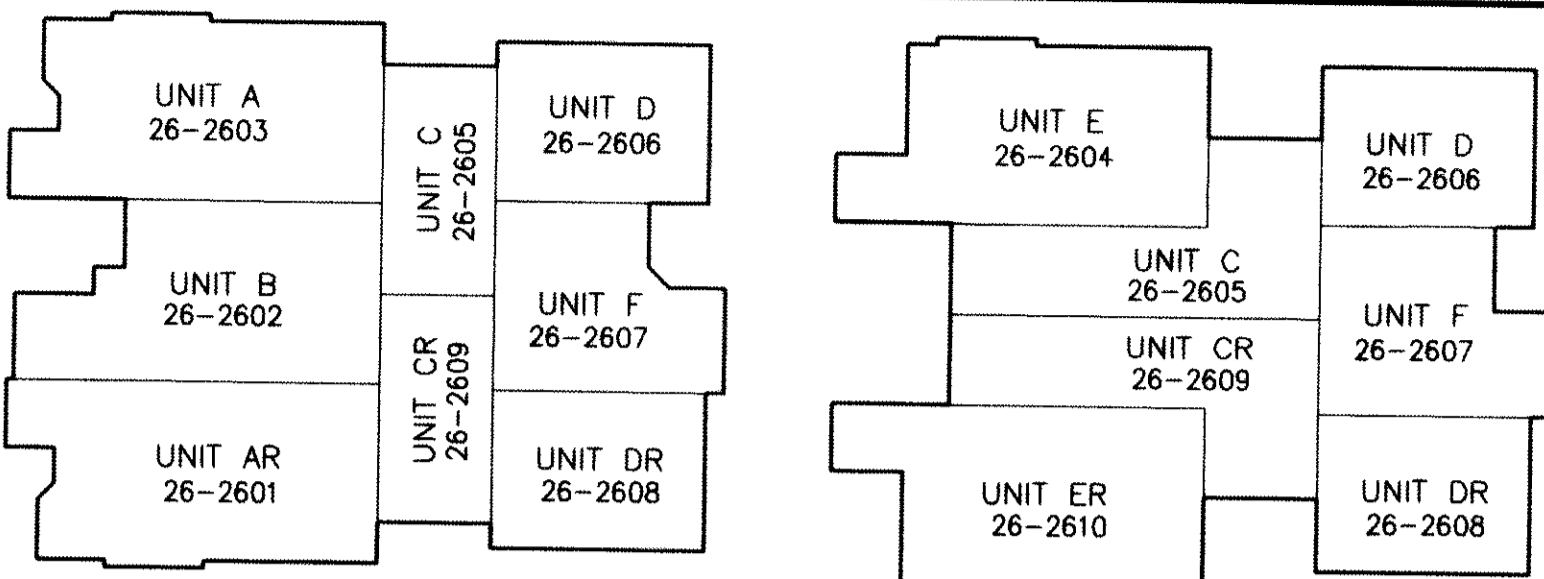


#070004793

RECORD MERIDIAN
P.B. 66, PG. 52

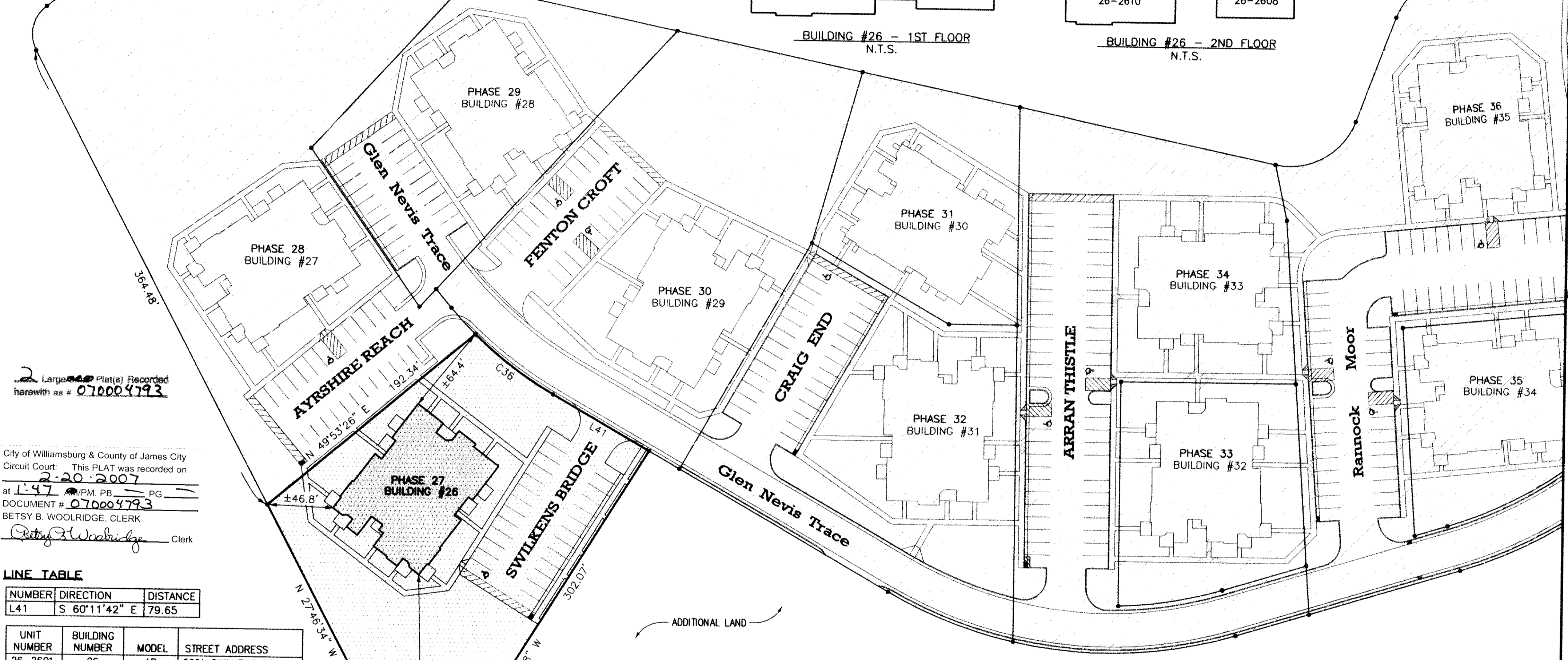
N/F
JAMESTOWN, LLC
PARCEL W-1
INST. #990005545
P.B. 72 PG. 31-37
PIN #3640100022



BUILDING #26 - 1ST FLOOR
N.T.S.

BUILDING #26 - 2ND FLOOR
N.T.S.

EXISTING
NATURAL OPEN
SPACE EASEMENT



2 Large Plats Recorded
herewith as # 070004793

City of Williamsburg & County of James City
Circuit Court: This PLAT was recorded on
2-20-2007
at 1:47 PM, PG. 52
DOCUMENT # 070004793
BETSY B. WOOLRIDGE, CLERK
Betsy B. Woolridge Clerk

LINE TABLE

NUMBER	DIRECTION	DISTANCE
L41	S 60°11'42" E	79.65

UNIT NUMBER	BUILDING NUMBER	MODEL	STREET ADDRESS
26-2601	26	AR	2601 SWILKENS BRIDGE
26-2602	26	B	2602 SWILKENS BRIDGE
26-2603	26	A	2603 AYRSHIRE REACH
26-2604	26	E	2604 AYRSHIRE REACH
26-2605	26	C	2605 AYRSHIRE REACH
26-2606	26	D	2606 AYRSHIRE REACH
26-2607	26	F	2607 AYRSHIRE REACH
26-2608	26	DR	2608 SWILKENS BRIDGE
26-2609	26	CR	2609 SWILKENS BRIDGE
26-2610	26	ER	2610 SWILKENS BRIDGE

SURVEYORS CERTIFICATE
I HEREBY CERTIFY THAT TO THE BEST OF MY KNOWLEDGE OR BELIEF, THIS PLAT IS ACCURATE AND COMPLIES WITH THE PROVISIONS OF SECTION 55-79.58 (A) OF THE CODE OF VIRGINIA 1950 AS AMENDED AND THAT ALL UNITS DEPICTED HEREON HAVE BEEN SUBSTANTIALLY COMPLETED.

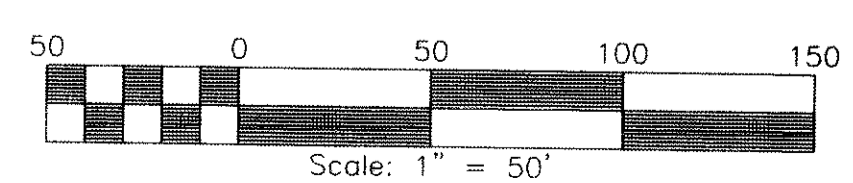
Ch A. Ch
STATE CERTIFIED LAND SURVEYOR
2/13/07
DATE

CURVE TABLE

NUMBER	DELTA	CHORD BEARING	TANGENT	RADIUS	ARC	CHORD
C36	14°44'48"	S 52°49'19" E	35.59	275.00	70.78	70.58

AREA TABULATIONS

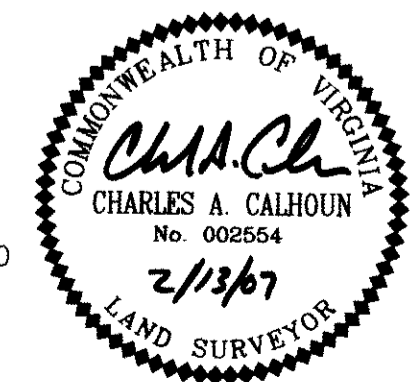
TOTAL AREA ENCOMPASSED BY THIS CONDOMINIUM PLAT: 39.9215 AC.
EX. PHASES: = 10.0153 ACRES (PREVIOUSLY SUBMITTED)
PHASE 27: = 1.0331 ACRES (THIS SUBMITTAL)
TOTAL ACREAGE OF ADDITIONAL LAND = 28.8731 ACRES



**PHASE 27
BRAEMAR CREEK
AT GREENSPRINGS PLANTATION
A CONDOMINIUM**

LOCATED IN THE BERKELEY DISTRICT
JAMES CITY COUNTY, VIRGINIA

DATE: 2/13/07 SCALE: 1" = 50' JOB# 05-548-27
SHEET 2 OF 2



5810-F Mooretown Road, Williamsburg, VA 23188
Phone: (757) 565-1677 Fax: (757) 565-0782
web: landtechresources.com