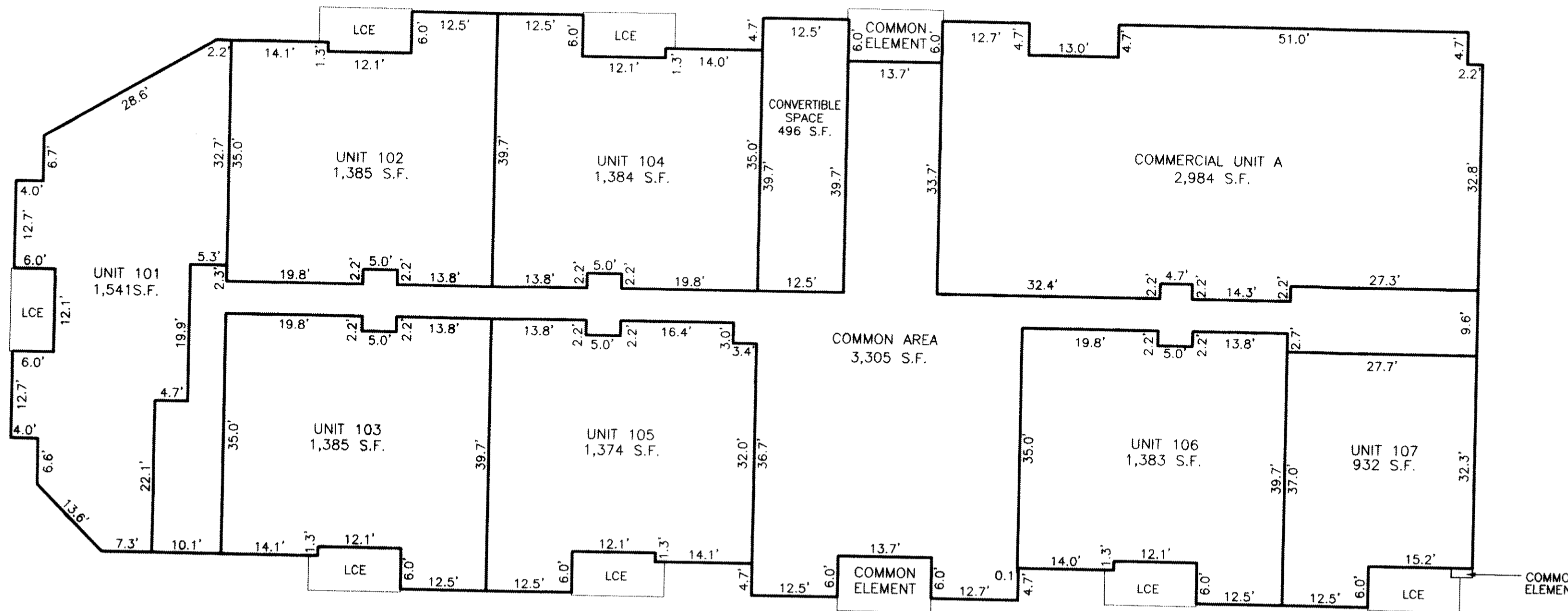
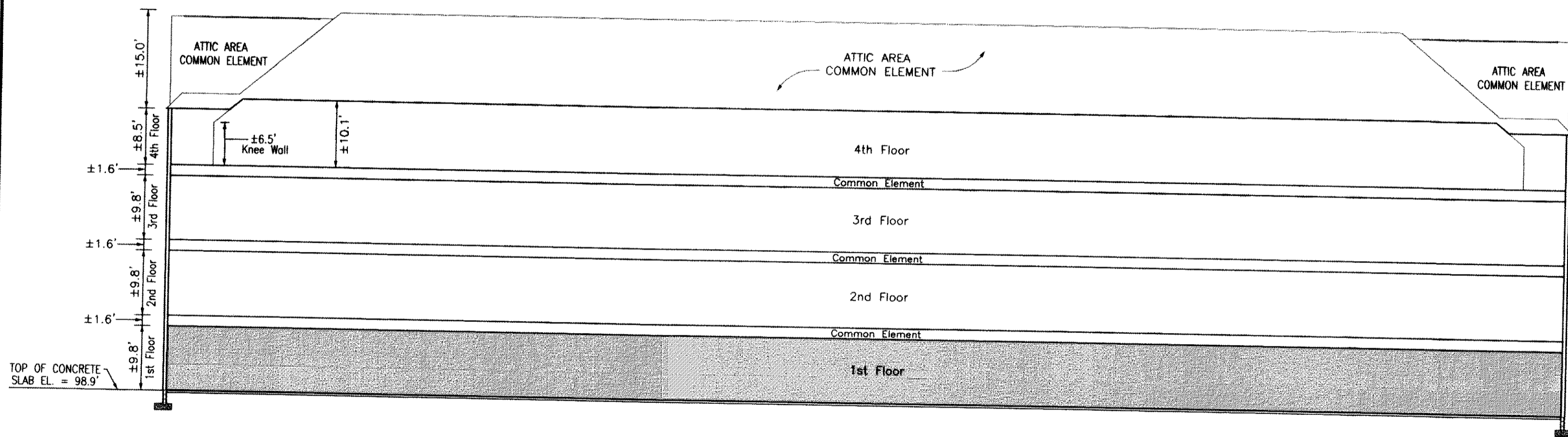


#070004489



LEGEND
 LCE = LIMITED COMMON ELEMENT

FIRST FLOOR PLAN



SECTION "A" FLOOR ELEVATIONS

SURVEYOR'S CERTIFICATE
 I CERTIFY THAT THESE PLANS ARE ACCURATE AND COMPLY WITH THE PROVISIONS OF SECTION 55-79.58(B) OF THE CODE OF VIRGINIA 1950 AS AMENDED AND THAT ALL UNITS DEPICTED HEREON HAVE BEEN SUBSTANTIALLY COMPLETED.

Matthew H. Connolly
 MATTHEW H. CONNOLLY
 2/05/2007
 DATE



5 Large/Small Plat(s) Recorded herewith as # 070004489

City of Williamsburg & County of James City
 Circuit Court: This PLAT was recorded on 15 February 2007
 at 3:23 AM/PM, PG. 1
 DOCUMENT # 070004489
 BETSY B. WOOLRIDGE, CLERK
Betsy B. Woolridge

AREA BREAKDOWN
 LIMITED COMMON ELEMENT (LCE) = ±583 S.F.
 COMMON ELEMENT(BUILDING) = ±218 S.F.
 COMMON ELEMENT(OUTSIDE OF BUILDING) = ±5,218 S.F.
 CONVERTIBLE SPACE = 496 S.F.
 COMMERCIAL UNIT = 2,984 S.F.
 COMMON AREA = 3,305 S.F.
 RESIDENTIAL UNITS = 9,384 S.F.
TOTAL AREA = 22,188 S.F.

CONDOMINIUM PLAN
BENNINGTON ON THE PARK
A CONDOMINIUM
 NEW TOWN, SECTION 2 & 4
 BLOCK 8, PARCEL E
 JAMES CITY COUNTY, VIRGINIA
 DATE: 02-05-2007 JOB# 05-838
 SHEET 2 OF 5

LandTech Resources, Inc.
 Surveying • Mapping • Land Design
 5810-F Mooretown Road, Williamsburg, VA 23188
 Phone: (757) 565-1677 Fax: (757) 565-0782
 web: landtechresources.com