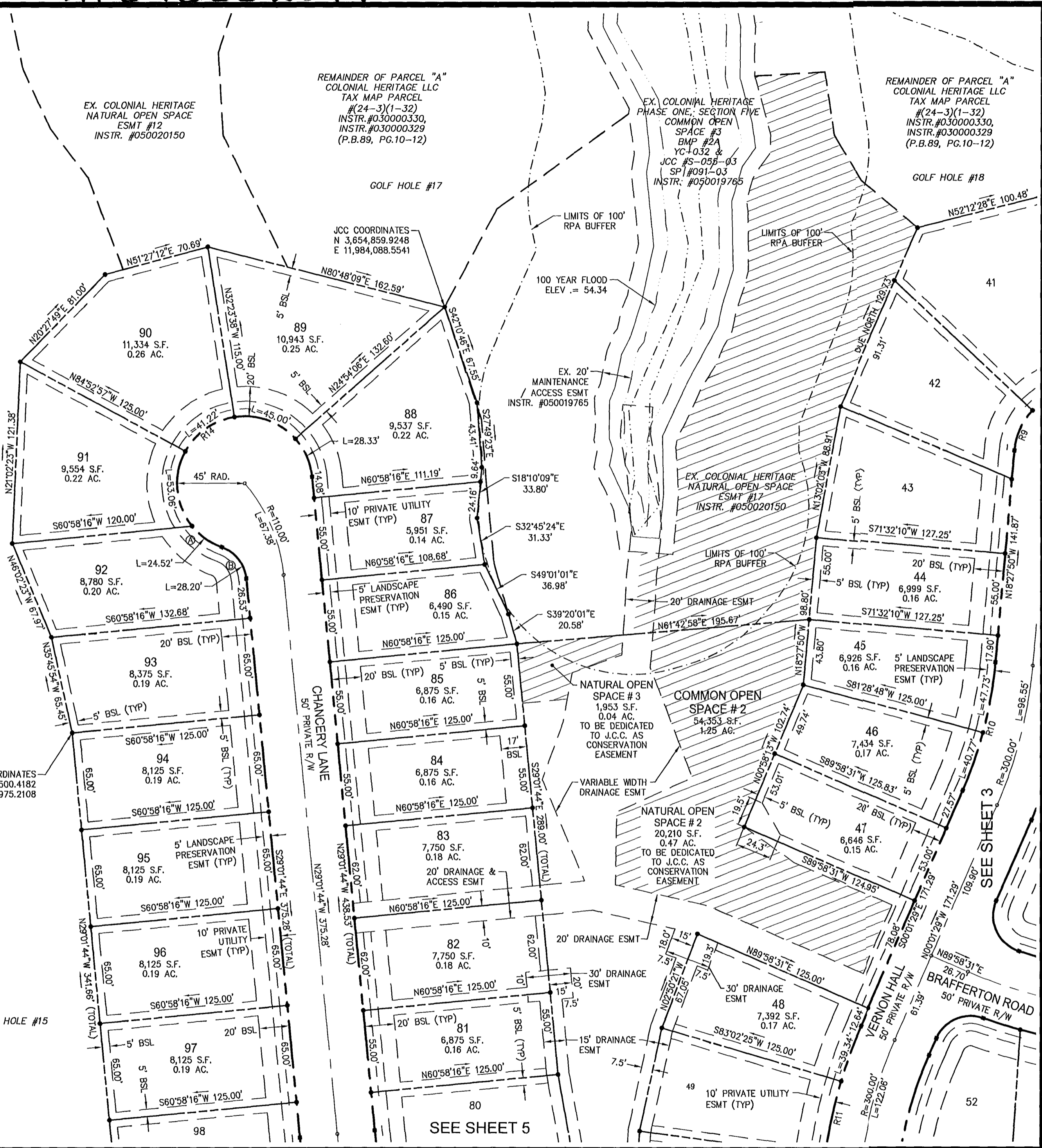
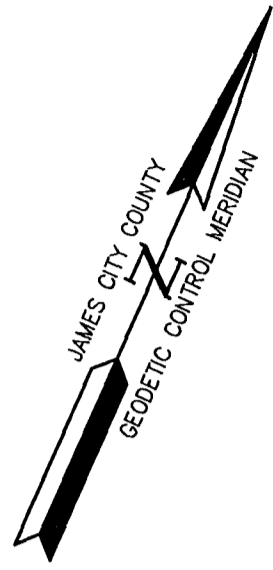
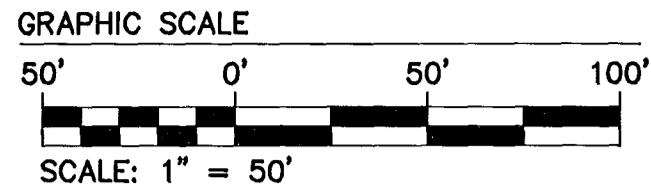


#070002549



REMAINDER OF PARCEL "A"
COLONIAL HERITAGE LLC
TAX MAP PARCEL
#(24-3)(1-32)
INSTR.#030000330,
INSTR.#030000329
(P.B.89, PG.10-12)

5 Large/Small Plat(s) Recorded
herewith as # 070002549

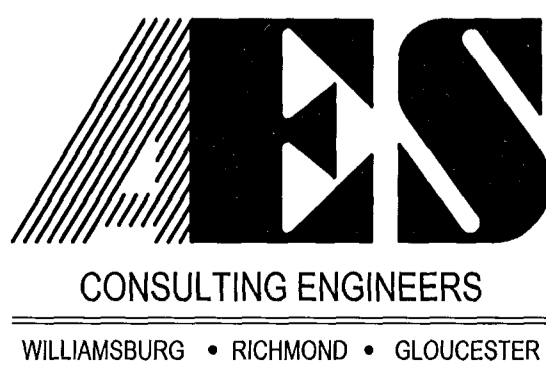
DENOTES AREA OF NATURAL OPEN SPACE

SEE SHEET 5 FOR CURVE DATA

City of Williamsburg & County of James City
Circuit Court: This PLAT was recorded on
30 January 2007
at 3:20 AM PM. PG. 1
DOCUMENT # 070002549
BETSY B. WOOLRIDGE, CLERK
Betsy B. Woolridge Clerk

THIS SHEET ADDRESSES LOTS 44 - 48 & 81 - 97

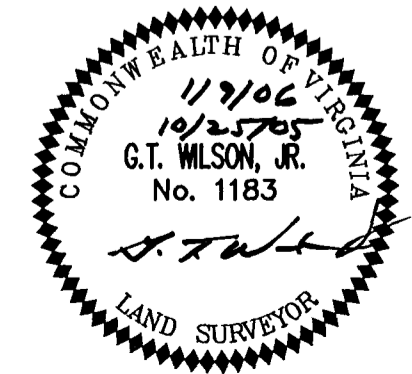
AREA TABULATION	
LOT AREA	941,511 S.F. OR 21.61 AC.±
COMMON OPEN SPACE *	93,220 S.F. OR 2.14 AC.±
RIGHT-OF-WAY	232,086 S.F. OR 5.33 AC.±
<hr/>	
TOTAL AREA	1,266,817 S.F. OR 29.08 AC.±
NUMBER OF LOTS =	119
LOTS PER ACRE =	4.09
* COMMON OPEN SPACE INCLUDES NATURAL OPEN SPACE	



5248 Olde Towne Road, Suite 1
Williamsburg, Virginia 23188
(757) 253-0040
Fax (757) 220-8994

PLAT OF SUBDIVISION
COLONIAL HERITAGE
PHASE III, SECTION 1 LOTS 1-119
PREPARED FOR COLONIAL HERITAGE LLC

STONEHOUSE DISTRICT JAMES CITY COUNTY VIRGINIA



No.	DATE	REVISION / COMMENT / NOTE	BY
1	1/9/06	REVISED PER J.C.C. COMMENT LETTERS DATED 11/23/05 & 1/9/06	AWT

Designed HWP	Drawn AWT
Scale 1"=50'	Date 10/25/05
Project No. 8881-31	
Drawing No. 4 of 5	