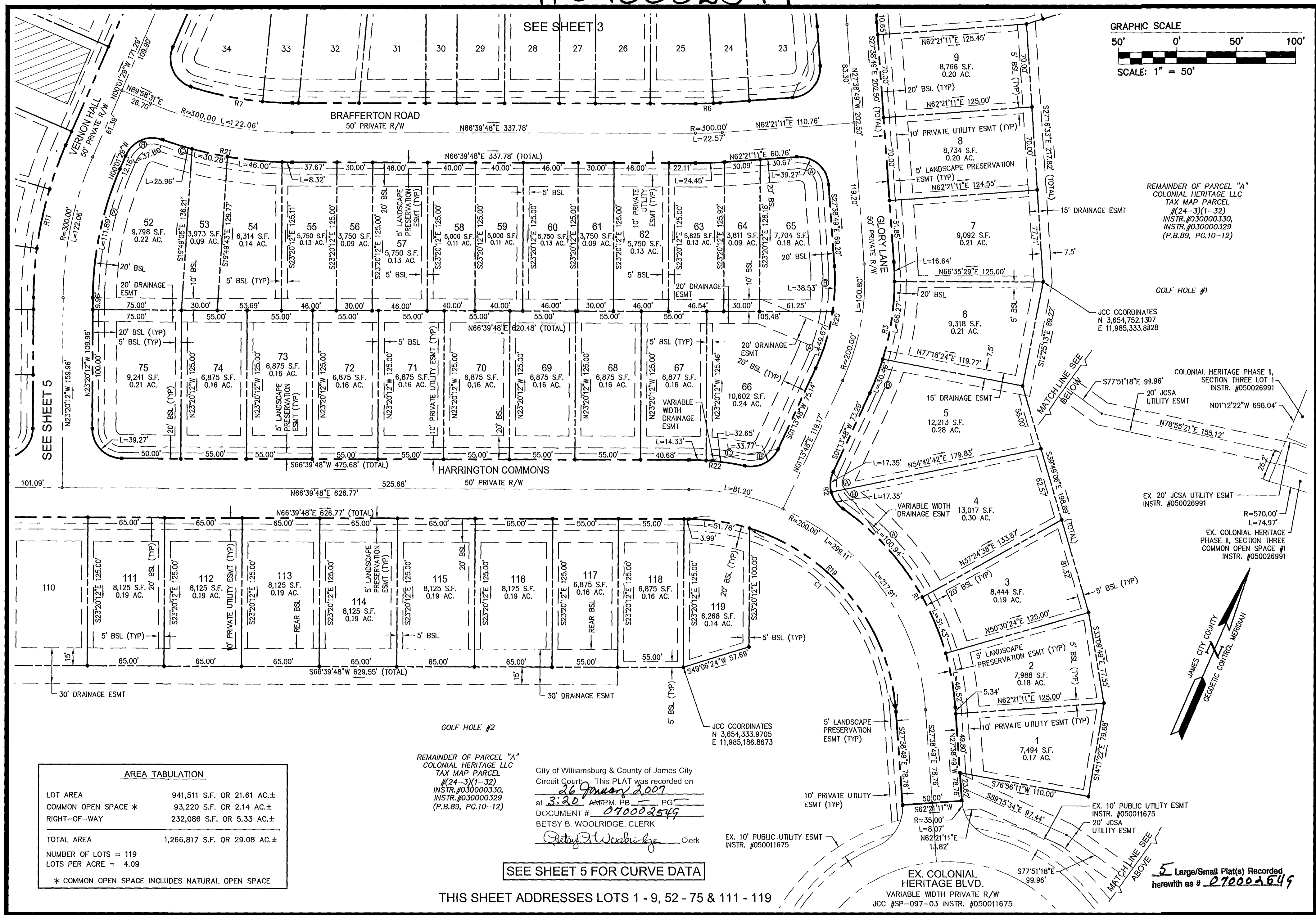
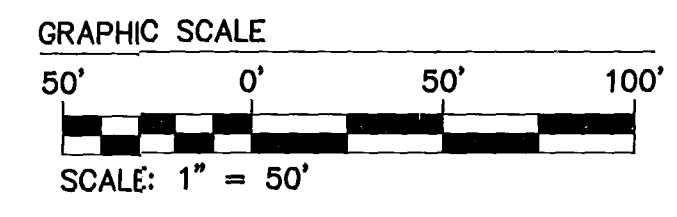


#070002549



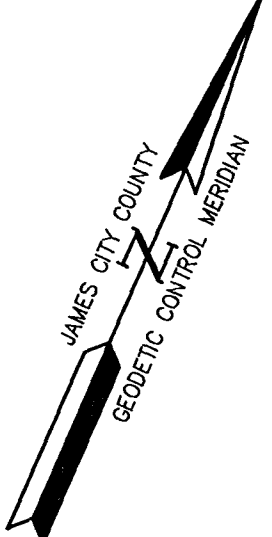
REMAINDER OF PARCEL "A"  
 COLONIAL HERITAGE LLC  
 TAX MAP PARCEL  
 #24-3(1-32)  
 INSTR. #030000330,  
 INSTR. #030000329  
 (P.B.89, PG.10-12)

JCC COORDINATES  
 N 3,654,752.1307  
 E 11,985,333.8828

COLONIAL HERITAGE PHASE II,  
 SECTION THREE LOT 1  
 INSTR. #050026991

EX. 20' JCSA UTILITY ESMT  
 INSTR. #050026991

EX. COLONIAL HERITAGE PHASE II,  
 SECTION THREE  
 COMMON OPEN SPACE #1  
 INSTR. #050026991



AREA TABULATION	
LOT AREA	941,511 S.F. OR 21.61 AC.±
COMMON OPEN SPACE *	93,220 S.F. OR 2.14 AC.±
RIGHT-OF-WAY	232,086 S.F. OR 5.33 AC.±
<b>TOTAL AREA</b>	<b>1,266,817 S.F. OR 29.08 AC.±</b>
NUMBER OF LOTS =	119
LOTS PER ACRE =	4.09
* COMMON OPEN SPACE INCLUDES NATURAL OPEN SPACE	

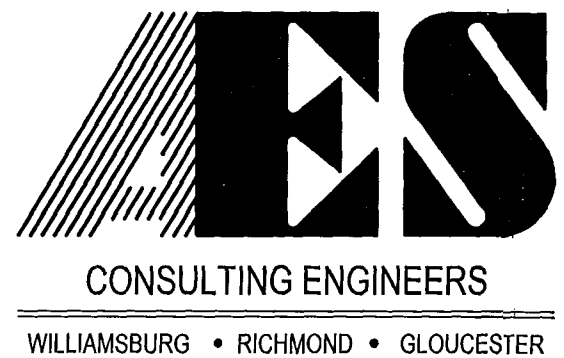
REMAINDER OF PARCEL "A"  
 COLONIAL HERITAGE LLC  
 TAX MAP PARCEL  
 #24-3(1-32)  
 INSTR. #030000330,  
 INSTR. #030000329  
 (P.B.89, PG.10-12)

City of Williamsburg & County of James City  
 Circuit Court This PLAT was recorded on  
26 January 2007  
 at 3:20 AM/PM, PG. 1  
 DOCUMENT # 070002549  
 BETSY B. WOOLRIDGE, CLERK  
*Betsy B. Woolridge* Clerk

SEE SHEET 5 FOR CURVE DATA

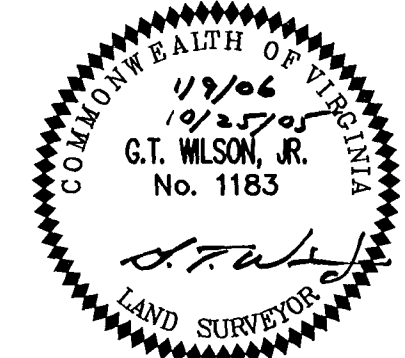
THIS SHEET ADDRESSES LOTS 1 - 9, 52 - 75 & 111 - 119

EX. COLONIAL HERITAGE BLVD.  
 VARIABLE WIDTH PRIVATE R/W  
 JCC #SP-097-03 INSTR. #050011675



5248 Olde Towne Road, Suite 1  
 Williamsburg, Virginia 23188  
 (757) 253-0040  
 Fax (757) 220-8994

PLAT OF SUBDIVISION  
**COLONIAL HERITAGE**  
 PHASE III, SECTION 1 LOTS 1-119  
 PREPARED FOR COLONIAL HERITAGE LLC  
 STONEHOUSE DISTRICT JAMES CITY COUNTY VIRGINIA



No.	DATE	REVISION / COMMENT / NOTE	BY
1	1/9/06	REVISED PER J.C.C. COMMENT LETTERS DATED 11/23/05 & 1/9/06	AWT

Designed	Drawn
HWP	AWT
Scale	Date
1"=50'	10/25/05
Project No.	
8881-31	
Drawing No.	
2 of 5	